

IE-FCI-HDMI-FF**Weidmüller Interface GmbH & Co. KG**

Klingenbergstraße 26

D-32758 Detmold

Germany

www.weidmueller.com

FrontCom® Vario integrates multiple functions in only one single frame. The system is easy to install and you can select from a wide range of data, signal and power modules. In addition to being extremely compact, FrontCom® Vario offers a number of unique product features that will make your project planning and work activities secure, fast and future-proof. Furthermore, the FrontCom® Vario system has an attractive housing design that, by the way, offers highest impact-resistance and fully meets the requirements of IP 65 protection class.

General ordering data

Version	FrontCom, HDMI coupling, Signal insert HDMI, Socket / socket
Order No.	2003390000
Type	IE-FCI-HDMI-FF
GTIN (EAN)	4050118387414
Qty.	1 pc(s).

IE-FCI-HDMI-FF**Weidmüller Interface GmbH & Co. KG**

Klingenbergstraße 26

D-32758 Detmold

Germany

www.weidmueller.com**Technical data****Dimensions and weights**

Net weight	11 g
------------	------

Temperatures

Operating temperature	-15 °C...50
-----------------------	-------------

General data

Insert type	Signal insert HDMI	Product type	HDMI coupling
Protection degree	IP20		

Classifications

ETIM 6.0	EC001121	ETIM 7.0	EC001121
ETIM 8.0	EC001121	ETIM 9.0	EC001121
ECLASS 9.0	27-44-03-90	ECLASS 9.1	27-18-90-90
ECLASS 10.0	27-44-03-90	ECLASS 11.0	27-44-03-90
ECLASS 12.0	27-18-28-92	ECLASS 13.0	27-18-28-92

Environmental Product Compliance

REACH SVHC	Lead 7439-92-1
------------	----------------

Approvals

ROHS	Conform
------	---------

Downloads

Engineering Data	CAD data – STEP
User Documentation	MAN IE GUIDE DE MAN IE GUIDE EN
Catalogues	Catalogues in PDF-format
Brochures	MB FREECONTACT EN FL FIELDWIRING EN PI PROFINET CABLING EN PI PROFINET CABLING EN

IE-FCI-HDMI-FF

Weidmüller Interface GmbH & Co. KG

Klingenbergstraße 26

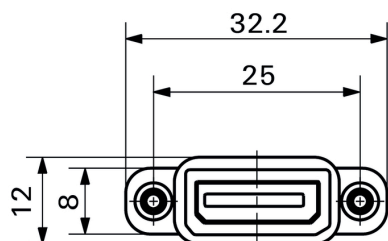
D-32758 Detmold

Germany

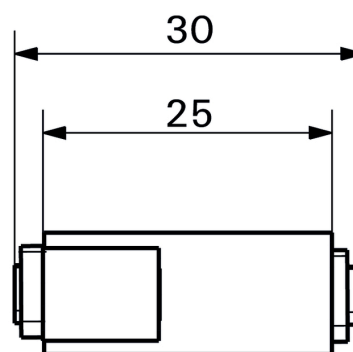
www.weidmueller.com

Drawings

Dimensioned drawing



Dimensioned drawing



Dimensioned drawing

