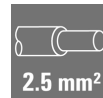
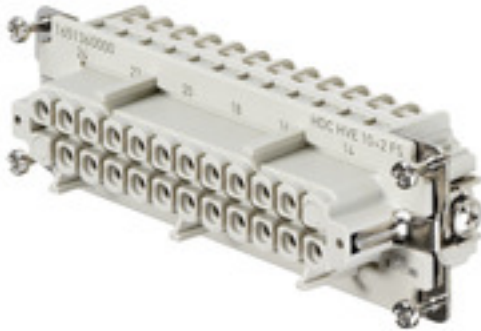


HDC HVE 10+2 FT CTH**Weidmüller Interface GmbH & Co. KG**

Klingenbergstraße 26

D-32758 Detmold

Germany

www.weidmueller.com

The HVE-series high-voltage inserts are equipped with two lagging contacts.

The wire connection level is designed as a crimp contact. Thus practically no servicing is required. In addition, a secure and permanent connection is established which is resistant to vibrations.

Number of poles: **12**

Rated current: **23 A**

Rated voltage: **830 V**

Nominal voltage acc. to UL/CSA: **600 V AC/DC**

Tension clamp connection

General ordering data

| | |
|------------|---|
| Version | HDC insert, Female, 830 V, 20 A, Number of poles: 12, Tension-clamp connection, Size: 8 |
| Order No. | 1967260000 |
| Type | HDC HVE 10+2 FT CTH |
| GTIN (EAN) | 4032248661275 |
| Qty. | 1 pc(s). |

HDC HVE 10+2 FT CTH

Weidmüller Interface GmbH & Co. KG

Klingenbergstraße 26

D-32758 Detmold

Germany

www.weidmueller.com

Technical data

Dimensions and weights

| | | | |
|------------|--------|-----------------|------------|
| Depth | 111 mm | Depth (inches) | 4.37 inch |
| Height | 33 mm | Height (inches) | 1.299 inch |
| Width | 34 mm | Width (inches) | 1.339 inch |
| Net weight | 90 g | | |

Temperatures

| | |
|-------------------|-------------------|
| Limit temperature | -40 °C ... 125 °C |
|-------------------|-------------------|

Dimensions

| | | | |
|------------------|-------|-------------------|--------|
| Height of socket | 33 mm | Total length base | 111 mm |
| Width | 34 mm | | |

General data

| | | | |
|------------------------------|---|--------------------------------------|-------------|
| BG | 8 | Colour | beige |
| Conductor cross-section | 2.5 mm ² | Free from halogens | true |
| Insulating material | PC glass-fibre reinforced (UL-listed and railway-certified) | Insulating material group | IIIa |
| Insulation strength | 10 ¹⁰ Ω | Low smoke acc. DIN EN 45545-2 | Yes |
| Material | Copper alloy | Number of poles | 12 |
| Number of power contacts | 10 | Number of signal contacts | 2 |
| Plugging cycles, silver | ≥ 500 | Pollution severity | 3 |
| Rated current (DIN EN 61984) | 20 A | Rated impulse voltage (DIN EN 61984) | 8 kV |
| Rated voltage (DIN EN 61984) | 830 V | Rated voltage according to UL/CSA | 600 V AC/DC |
| Series | HVE | Size | 8 |
| Surface finish | Silver passivated | Type | Female |
| Type of connection | Tension-clamp connection | UL 94 flammability rating | V-0 |
| Volume resistance | ≤2 mΩ | | |

Connection data PE

| | | | |
|---------------------------------------|--------------|---------------------------------------|-------------------|
| Blade size, slotted (PE connection) | SD 0.8 x 4.0 | Connection type PE | Screw connection |
| Fixing screw | M 4 | Rated cross-section | 4 mm ² |
| Stripping length PE connection | 10 mm | Tightening torque, max. PE connection | 1.5 Nm |
| Tightening torque, min. PE connection | 1.2 Nm | Wire cross section, AWG (PE), max. | AWG 12 |
| Wire cross section, AWG (PE), min. | AWG 20 | | |

Version

| | | | |
|---|--------------------------|---|----------------------|
| BG | 8 | Blade size, slotted (screw connection) | SD 0.5 x 3.0 |
| Conductor cross-section, max. | 2.5 mm ² | Conductor cross-section, min. | 0.25 mm ² |
| Material | Copper alloy | Size | 8 |
| Stripping length, rated connection | 8 mm | Surface finish | Silver passivated |
| Type of connection | Tension-clamp connection | Volume resistance | ≤2 mΩ |
| Wire connection cross section AWG, max. | AWG 14 | Wire connection cross section AWG, min. | AWG 24 |
| Wire connection cross section, finely stranded, max. | 4 mm ² | Wire connection cross section, finely stranded, min. | 0.5 mm ² |
| Wire connection cross-section, finely stranded with wire-end ferrules DIN 46228/4, max. | 4 mm ² | Wire connection cross-section, finely stranded with wire-end ferrules DIN 46228/4, min. | 0.5 mm ² |
| Wire cross-section, solid, max. | 4 mm ² | Wire cross-section, solid, min. | 0.5 mm ² |

Creation date May 3, 2024 8:30:33 AM CEST

Catalogue status 20.04.2024 / We reserve the right to make technical changes.

HDC HVE 10+2 FT CTH

Weidmüller Interface GmbH & Co. KG

Klingenbergstraße 26

D-32758 Detmold

Germany

www.weidmueller.com

Technical data

Classifications

| | | | |
|-------------|-------------|-------------|-------------|
| ETIM 6.0 | EC000438 | ETIM 7.0 | EC000438 |
| ETIM 8.0 | EC000438 | ETIM 9.0 | EC000438 |
| ECLASS 9.0 | 27-44-02-05 | ECLASS 9.1 | 27-44-02-05 |
| ECLASS 10.0 | 27-44-02-05 | ECLASS 11.0 | 27-44-02-05 |
| ECLASS 12.0 | 27-44-02-05 | ECLASS 13.0 | 27-44-02-05 |

| | |
|---------------------|---------------------------|
| Substance | Acetone |
| Chemical resistance | Resistant |
| Substance | Ammonia, watery |
| Chemical resistance | Conditionally resistant |
| Substance | Petrol |
| Chemical resistance | Resistant |
| Substance | Benzene |
| Chemical resistance | Resistant |
| Substance | Diesel oil |
| Chemical resistance | Conditionally resistant |
| Substance | Acetic acid, concentrated |
| Chemical resistance | Resistant |
| Substance | Potassium hydroxide |
| Chemical resistance | Conditionally resistant |
| Substance | Methanol |
| Chemical resistance | Conditionally resistant |
| Substance | Motor oil |
| Chemical resistance | Conditionally resistant |
| Substance | Lye, diluted |
| Chemical resistance | Resistant |
| Substance | Hydrochlorofluorocarbons |
| Chemical resistance | Conditionally resistant |
| Substance | Outdoor use |
| Chemical resistance | Conditionally resistant |

Environmental Product Compliance

| | |
|---------------------|--|
| REACH SVHC | Lead 7439-92-1 Potassium perfluorobutane sulfonate 29420-49-3 |
| SCIP | b67daa31-7dca-434d-8290-da7fb52f83a2 |
| Chemical resistance | de.myview.objectmodel.impl.BlockImpl@6b2fa12d de.myview.objectmodel.impl.BlockImpl@1eb28a0 de.myview.objectmodel.impl.BlockImpl@5d777383 de.myview.objectmodel.impl.BlockImpl@2d2a6211 de.myview.objectmodel.impl.BlockImpl@3b9a9850 de.myview.objectmodel.impl.BlockImpl@636c19ab de.myview.objectmodel.impl.BlockImpl@5e1952e de.myview.objectmodel.impl.BlockImpl@7b254569 de.myview.objectmodel.impl.BlockImpl@14921a45 de.myview.objectmodel.impl.BlockImpl@1730f83d de.myview.objectmodel.impl.BlockImpl@1e715710 de.myview.objectmodel.impl.BlockImpl@4fae57ba |

HDC HVE 10+2 FT CTH

Weidmüller Interface GmbH & Co. KG

Klingenbergstraße 26

D-32758 Detmold

Germany

www.weidmueller.com

Technical data

Approvals

Approvals



ROHS

Conform

Downloads

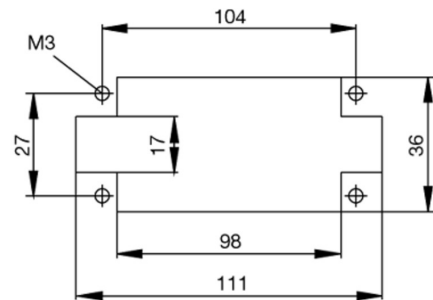
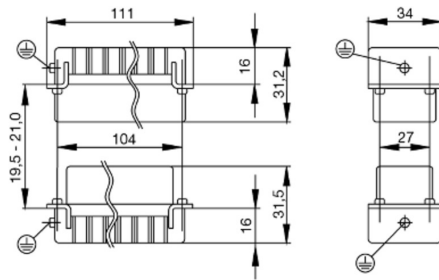
| | |
|------------------|--|
| Engineering Data | CAD data – STEP |
| Catalogues | Catalogues in PDF-format |
| Brochures | FL FIELDWIRING EN FL FIELDWIRING EN |

HDC HVE 10+2 FT CTH

Weidmüller Interface GmbH & Co. KG
Klingenbergstraße 26
D-32758 Detmold
Germany

www.weidmueller.com

Drawings



HDC HVE 10+2 FT CTH**Weidmüller Interface GmbH & Co. KG**

Klingenbergstraße 26

D-32758 Detmold

Germany

www.weidmueller.com**Accessories****DSTV**

Various accessories are available for our inserts. This includes coding elements for the inserts.

General ordering data

| | | |
|------------|----------------------------|--|
| Type | DSTV COBU5 | Version |
| Order No. | 1471500000 | Heavy-duty connectors, Accessories, Coding element |
| GTIN (EAN) | 4008190178543 | |
| Qty. | 100 pc(s). | |
| Type | DSTV COST4 | Version |
| Order No. | 1471300000 | Heavy-duty connectors, Accessories, Coding System |
| GTIN (EAN) | 4008190017354 | |
| Qty. | 100 pc(s). | |

Crosshead screwdriver Phillips

Crosshead screwdriver, Phillips, SDK PH DIN 5262, ISO 8764/2-PH, output to ISO 8764-PH, ChromTop tip, SoftFinish grip

General ordering data

| | | |
|------------|----------------------------|--------------------------|
| Type | SDK PH1 | Version |
| Order No. | 9008480000 | Screwdriver, Screwdriver |
| GTIN (EAN) | 4032248056477 | |
| Qty. | 1 pc(s). | |

HDC HVE 10+2 FT CTH**Weidmüller Interface GmbH & Co. KG**

Klingenbergstraße 26

D-32758 Detmold

Germany

www.weidmueller.com**Accessories****Crosshead screwdriver Phillips**

VDE insulated crosshead screwdriver, for Phillips screws, SDIK PH DIN 7438, ISO 8764/2-PH, output to ISO 8764-PH, SoftFinish grip

General ordering data

| | | |
|------------|----------------------------|--------------------------|
| Type | SDIK PH1 | Version |
| Order No. | 9008570000 | Screwdriver, Screwdriver |
| GTIN (EAN) | 4032248056569 | |
| Qty. | 1 pc(s). | |

Slotted screwdriver

Slotted screwdriver with rounded blade SD DIN 5265, ISO 2380/2, output to DIN 5264, ISO 2380/1. ChromTop tip, SoftFinish grip

General ordering data

| | | |
|------------|----------------------------|--------------------------|
| Type | SDS 0.6X3.5X100 | Version |
| Order No. | 9008330000 | Screwdriver, Screwdriver |
| GTIN (EAN) | 4032248056286 | |
| Qty. | 1 pc(s). | |
| Type | SDS 0.5X3.0X80 | Version |
| Order No. | 9008320000 | Screwdriver, Screwdriver |
| GTIN (EAN) | 4032248056262 | |
| Qty. | 1 pc(s). | |
| Type | SDS 0.8X4.0X100 | Version |
| Order No. | 9008340000 | Screwdriver, Screwdriver |
| GTIN (EAN) | 4032248056293 | |
| Qty. | 1 pc(s). | |

HDC HVE 10+2 FT CTH**Weidmüller Interface GmbH & Co. KG**

Klingenbergstraße 26

D-32758 Detmold

Germany

www.weidmueller.com**Accessories****Slotted screwdriver**

VDE insulated slot-head screwdriver, SDI DIN 7437, ISO 2380/2, drive output acc. to DIN 5264, ISO 2380/1. SoftFinish grip

General ordering data

| | | |
|------------|----------------------------|--------------------------|
| Type | SDIS 0.6X3.5X100 | Version |
| Order No. | 9008390000 | Screwdriver, Screwdriver |
| GTIN (EAN) | 4032248056354 | |
| Qty. | 1 pc(s). | |
| Type | SDIS 0.5X3.0X100 | Version |
| Order No. | 9008380000 | Screwdriver, Screwdriver |
| GTIN (EAN) | 4032248056347 | |
| Qty. | 1 pc(s). | |
| Type | SDIS 0.8X4.0X100 | Version |
| Order No. | 9008400000 | Screwdriver, Screwdriver |
| GTIN (EAN) | 4032248056361 | |
| Qty. | 1 pc(s). | |

Tightening torques and screwing tools

| Screw size | Connector type | Dia. tightening torque in Nm | Recommended blade inserts and AF size for hexagon socket |
|--------------------|---|---|--|
| M 2.5 | Signal contacts | | |
| | S 6/6 | 0.5 - 0.55 | SD 0.6 x 3.5 mm or PZ0 |
| | S 6/12 | 0.5 - 0.55 | SD 0.6 x 3.5 mm or PZ0 |
| M 2.9 x 0.5 | Fastening screws | | |
| | HQ 4/2 | 0.8 (plastic) / 1.1 (metal) | SD 0.6 x 3.5 mm or PH0 |
| | HQ 8 | 0.8 (plastic) / 1.1 (metal) | SD 0.6 x 3.5 mm or PH0 |
| | HQ 17 | 0.8 (plastic) / 1.1 (metal) | SD 0.6 x 3.5 mm or PH0 |
| M 3 | Contact screws | | |
| | HA 3 | 0.5 - 0.55 | SD 0.5 x 3.0 mm |
| | HA 4 | 0.5 - 0.55 | SD 0.5 x 3.0 mm |
| | HA 10 bis HA 48 | 0.5 - 0.55 | SD 0.6 x 3.5 mm or PH0 |
| | HE | 0.5 - 0.55 | SD 0.6 x 3.5 mm or PZ0 |
| | HVE | 0.5 - 0.55 | SD 0.6 x 3.5 mm or PZ0 |
| | Signal contacts: | | |
| | S 4/2 | 0.5 - 0.55 | SD 0.6 x 3.5 mm or PZ0 |
| | S 4/8 | 0.5 - 0.55 | SD 0.6 x 3.5 mm or PZ0 |
| | PE connection via female contact | | |
| | S 4 | 0.5 - 0.8 | SD 0.6 x 3.5 mm |
| | ConCept modular frame, metal | 0.5 - 0.55 | SD 0.6 x 3.5 mm |
| | PE terminal | | |
| | HQ 5 | 0.5 - 0.55 | SD 0.6 x 3.5 or 0.8 x 4 mm |
| | HQ 7 | 0.5 - 0.55 | SD 0.6 x 3.5 or 0.8 x 4 mm |
| | Fastening screws | 0.5 - 0.55 | SD 0.6 x 3.5 mm or PZ0 |
| | Guide pin | 0.5 - 0.55 | SD 0.6 x 3.5 mm or PZ0 |
| | Guide bush | 0.5 - 0.55 | SD 0.6 x 3.5 mm or PZ0 |
| | Coding pins | 0.5 - 0.55 | SD 0.6 x 3.5 mm or PZ0 |
| M 4 | Contact screws | | |
| | HSB | 1.2 - 1.5 | SD 0.6 x 3.5 or 0.8 x 4 mm or PZ1 |
| | PE connection via male contact | | |
| | S 4 | 0.5 - 0.8 | SD 0.6 x 3.5 mm |
| | ConCept modular frame, metal | 1.2 - 1.5 | SD 0.6 x 3.5 mm |
| | PE terminal | | |
| | HA | 1.2 - 1.5 | SD 0.6 x 3.5 or 0.8 x 4 mm or PH1 |
| | HE | 1.2 - 1.5 | SD 0.6 x 3.5 or 0.8 x 4 mm or PH1 |
| | HEE | 1.2 - 1.5 | SD 0.6 x 3.5 or 0.8 x 4 mm or PH1 |
| | HVE | 1.2 - 1.5 | SD 0.6 x 3.5 or 0.8 x 4 mm or PH1 |
| | HD | 1.2 - 1.5 | SD 0.6 x 3.5 or 0.8 x 4 mm or PZ1 |
| | HDD | 1.2 - 1.5 | SD 0.6 x 3.5 or 0.8 x 4 mm or PZ1 |
| | S 6/6 (for signal contacts) | 1.2 - 1.5 | 0.8 x 4 mm or PZ1 |
| | ConCept modular frame, plastic | 1.2 - 1.5 | 0.8 x 4 mm or PZ1 |
| M 5 | PE terminal | | |
| | HSB | 2 - 2.5 | SD 1 x 5.5 mm or PZ2 |
| | S 4/0 (Screw connection) | 2 - 2.5 | SD 1.2 x 6.5 mm or PH2 |
| | S 4/0 (Axial screw connection) | 2 - 2.5 | SD 0.8 x 4 mm or PZ 2 |
| | S 4/2 | 2 - 2.5 | SD 1.2 x 6.5 mm or PH2 |
| | S 4/8 | 2 - 2.5 | SD 1.2 x 6.5 mm or PH2 |
| | S 6/12 | 2 - 2.5 | SD 0.8 x 4 mm or PZ 2 |
| | S 6/36 | 2 - 2.5 | SD 1.2 x 6.5 mm or PH2 |
| | S 8/24 | 2 - 2.5 | SD 1.2 x 6.5 mm or PH2 |
| | S 12/2 | 2 - 2.5 | SD 1.2 x 6.5 mm or PH2 |
| M 6 | Power contacts | | |
| | S 4/0 (Screw connection) | 1.2 (1.5 mm ²) / 2 (2.5 mm ²) / 3 (4-16 mm ²) | SD 0.8 x 4 mm |
| | S 4/2 | 1.2 (1.5 mm ²) / 2 (2.5 mm ²) / 3 (4-16 mm ²) | SD 0.8 x 4 mm |
| | S 4/8 | 1.2 (1.5 mm ²) / 2 (2.5 mm ²) / 3 (4-16 mm ²) | SD 0.8 x 4 mm |
| M 7 x 0.75 | Power contacts | | |
| | S 4 | 1.1 - 1.7 | SW 2 |
| | S 6/6 (+ PE) | 6 - 8 | SW 4 |
| M 8 x 0.75 | Power contacts | | |
| | S 6/12 | 1.1 - 1.7 | SW 2 |
| | S 8/0 (+ PE) | 6 (10-16 mm ²) - 7 (25 mm ²) | SW 4 |
| M10 x 1 | Power contacts | | |
| | S 4/0 (Axial connection) | 2 - 3 | SW 3 |

Increasing the tightening torque does not improve the contact resistance. The stated torque settings offer optimal mechanical, thermal and electrical conditions. Exceeding the recommended values may even damage the conductor and terminal.