

IE-OM-V04P-K21-2S**Weidmüller Interface GmbH & Co. KG**

Klingenbergstraße 26

D-32758 Detmold

Germany

www.weidmueller.com

Similar to illustration

Double junction box, design for PushPull plug-in connectors ver.4 according to IEC 61076-3-106, metal

General ordering data

Version	Junction box, IP67, Variant 4, 2 ports, straight
Order No.	1966250000
Type	IE-OM-V04P-K21-2S
GTIN (EAN)	4032248658442
Qty.	1 pc(s).

IE-OM-V04P-K21-2S**Weidmüller Interface GmbH & Co. KG**

Klingenbergstraße 26

D-32758 Detmold

Germany

www.weidmueller.com**Technical data****Dimensions and weights**

Depth	57 mm	Depth (inches)	2.244 inch
Width	136 mm	Width (inches)	5.354 inch
Length	125 mm	Length (inches)	4.921 inch
Net weight	475 g		

Temperatures

Operating temperature	-40 °C...70 °C
-----------------------	----------------

General data

Colour	grey	Housing main material	AL-Si 12
Plugging cycles	750	Protection degree	IP67
Type of mounting	Floor-mounted, Wall mounting		

General standards

Connector standard	IEC 61076-3-106 Var. 4
--------------------	------------------------

Classifications

ETIM 6.0	EC000261	ETIM 7.0	EC000261
ETIM 8.0	EC000261	ETIM 9.0	EC000261
ECLASS 9.0	27-18-01-01	ECLASS 9.1	27-18-92-90
ECLASS 10.0	27-18-01-01	ECLASS 11.0	27-18-01-01
ECLASS 12.0	27-18-01-01	ECLASS 13.0	27-18-01-01

Environmental Product Compliance

REACH SVHC	Lead 7439-92-1
SCIP	4f3aae94-c2bc-4010-b63b-5b114ba6bd55

Approvals

ROHS	Conform
------	---------

Downloads

Approval/Certificate/Document of Conformity	GOST Approval
Engineering Data	CAD data – STEP
User Documentation	MAN IE GUIDE DE MAN IE GUIDE EN
Catalogues	Catalogues in PDF-format
Brochures	MB FREECONTACT EN FL FIELDWIRING EN PI PROFINET CABLING EN PI PROFINET CABLING EN

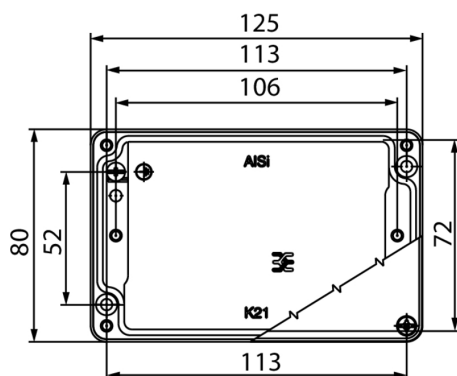
IE-OM-V04P-K21-2S

Weidmüller Interface GmbH & Co. KG
Klingenbergstraße 26
D-32758 Detmold
Germany

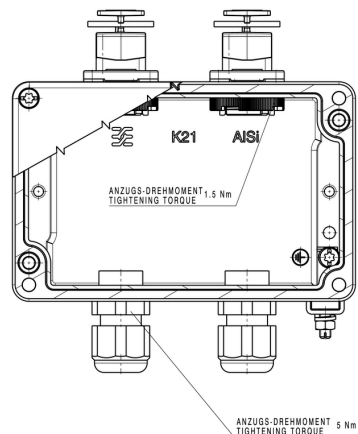
www.weidmueller.com

Drawings

Dimensioned drawing



Drawing



IE-OM-V04P-K21-2S

Weidmüller Interface GmbH & Co. KG

Klingenbergstraße 26

D-32758 Detmold

Germany

www.weidmueller.com

Accessories

Sets - RJ45

PushPull plug-in connector set according to IEC
61076-3-106 ver.4 (IEC24702), plastic with RJ45 insert



General ordering data

Type	IE-PS-V04P-RJ45-FH	Version
Order No.	1963160000	RJ45 plug, no tools required, Version 4, Cat.6A / Class E _A (ISO/IEC
GTIN (EAN)	4032248651665	11801 2010)
Qty.	10 pc(s).	
Type	IE-PS-V04P-RJ45-TH	Version
Order No.	1963180000	RJ45 crimp plug, Version 4, Cat.6A / Class E _A (ISO/IEC 11801 2010)
GTIN (EAN)	4032248653973	
Qty.	10 pc(s).	

RJ45

RJ45 inserts for plug-in connectors ver.1 / 4 / 5 / 14,
HDC and junction boxes IE-OM...; IE-OP...; IE-CC...



General ordering data

Type	IE-BI-RJ45-FJ-B	Version
Order No.	1963840000	RJ45 insert socket, Connector for base, TIA-568B
GTIN (EAN)	4032248651894	
Qty.	10 pc(s).	
Type	IE-BI-RJ45-FJ-P	Version
Order No.	1963830000	RJ45 insert socket, Connector for base, PROFINET
GTIN (EAN)	4032248646159	
Qty.	10 pc(s).	
Type	IE-BI-RJ45-FJ-A	Version
Order No.	1962850000	RJ45 insert socket, Connector for base, TIA-568A
GTIN (EAN)	4032248645053	
Qty.	10 pc(s).	