

HDC 06B SLU 1M20G**Weidmüller Interface GmbH & Co. KG**

Klingenbergstraße 26

D-32758 Detmold

Germany

www.weidmueller.com

The special die-cast alloy and the multi-layered surface sealing provide complete protection for the HDC housings.

The cleverly designed interlock system is manufactured from stainless steel. This guarantees a long lifespan with high resistance to corrosion and impact.

The housing interlock system provides integrated safety. Our unique, patented spring system provides the housing interlock with a secure grip and prevents accidental opening.

The laser marking allows for easy and quick identification. Each housing is permanently labelled with a laser marking so that each product can be quickly designated and positioned.

Weidmüller RockStar® IP 65 / NEMA Type 4X housings - your first choice for industrial housings with IP 65 protection.

General ordering data

Version	HDC enclosures, Size: 3, Protection degree: IP65 (in plugged condition), Base housing, End-locking clamp, lower side, Standard, without cover, Size of cable entries: M 20
Order No.	1900460000
Type	HDC 06B SLU 1M20G
GTIN (EAN)	4032248585939
Qty.	1 pc(s).

HDC 06B SLU 1M20G

Weidmüller Interface GmbH & Co. KG

Klingenbergstraße 26

D-32758 Detmold

Germany

www.weidmueller.com

Technical data

Dimensions and weights

Height	54 mm	Height (inches)	2.126 inch
Width	71.7 mm	Width (inches)	2.823 inch
Mounting dimension - height	40 mm	Mounting dimension - width	70 mm
Net weight	225 g		

Temperatures

Limit temperature	-40 °C ... 125 °C
-------------------	-------------------

Dimensions

Cable entry	w. thread	Height of base B1	5 mm
Height of housing B	54 mm	Hole pitch length A2	70 mm
Total length housing	60 mm	Width base C1	54.5 mm
Width housing C	43 mm		

General data

EMC housings	No	Housing main material	diecast aluminium
Material of locking element	Stainless steel, rust-proof	Protection degree	IP65 (in plugged condition)
Surface finish	Powder coating	Tightening torque	1.2 Nm

Version

BG	3	Cable entry	w. thread
Clamp version	End-locking clamp	Colour (RAL)	RAL 7035
Design	Standard	Design of cover	without cover
Design of housing	Base housing	Design of locking system	End-locking clamp, lower side
Internal thread	M 20	Number of cable entry on top	0
Number of cable entry sideways	1	Sealing	NBR
Size	3	Size of cable entries	M 20
Suitable for ModuPlug®	No	Tightening torque	1.2 Nm
Top part/bottom part/lid	lower part	Type	Base housing

Classifications

ETIM 6.0	EC000437	ETIM 7.0	EC000437
ETIM 8.0	EC000437	ETIM 9.0	EC000437
ECLASS 9.0	27-44-02-02	ECLASS 9.1	27-44-02-02
ECLASS 10.0	27-44-02-02	ECLASS 11.0	27-44-02-02
ECLASS 12.0	27-44-02-02	ECLASS 13.0	27-44-02-02

Substance	Acetone
Chemical resistance	Conditionally resistant
Substance	Drilling oil
Chemical resistance	Resistant
Substance	Diesel
Chemical resistance	Resistant
Substance	Ethyl alcohol
Chemical resistance	Resistant

Creation date April 27, 2024 8:13:07 AM CEST

HDC 06B SLU 1M20G**Weidmüller Interface GmbH & Co. KG**

Klingenbergstraße 26

D-32758 Detmold

Germany

www.weidmueller.com

Technical data

Substance	Transmission oil
Chemical resistance	Resistant
Substance	Hydraulic oil
Chemical resistance	Resistant
Substance	Coolant
Chemical resistance	Resistant
Substance	Petroleum benzine
Chemical resistance	Resistant
Substance	Sweat
Chemical resistance	Resistant
Substance	Premium gasoline
Chemical resistance	Conditionally resistant
Substance	Water
Chemical resistance	Resistant
Substance	UV
Chemical resistance	Unstable
Substance	Ozone
Chemical resistance	Unstable

Environmental Product Compliance

REACH SVHC	Lead 7439-92-1 Potassium perfluorobutane sulfonate 29420-49-3
SCIP	e98b2b24-ba23-41bf-8d19-0dda3647412f
Chemical resistance	de.myview.objectmodel.impl.BlockImpl@7608b413 de.myview.objectmodel.impl.BlockImpl@6d4418ad de.myview.objectmodel.impl.BlockImpl@1feddc36 de.myview.objectmodel.impl.BlockImpl@4f2a64ee de.myview.objectmodel.impl.BlockImpl@7cb1e934 de.myview.objectmodel.impl.BlockImpl@317d177f de.myview.objectmodel.impl.BlockImpl@4080710a de.myview.objectmodel.impl.BlockImpl@5c9170e0 de.myview.objectmodel.impl.BlockImpl@2f9ada0f de.myview.objectmodel.impl.BlockImpl@7685f66c de.myview.objectmodel.impl.BlockImpl@354ec197 de.myview.objectmodel.impl.BlockImpl@620fa1ae de.myview.objectmodel.impl.BlockImpl@1bbc4542

Approvals

Approvals



ROHS	Conform
UL File Number Search	UL Website
Certificate No. (cURus)	E92202

Downloads

Engineering Data	CAD data – STEP
Product Change Notification	20220214 Technical change to HDC housings 20220214 Technische Änderung bei HDC-Gehäusen
Catalogues	Catalogues in PDF-format
Brochures	FL FIELDWIRING EN FL FIELDWIRING EN

Creation date April 27, 2024 8:13:07 AM CEST

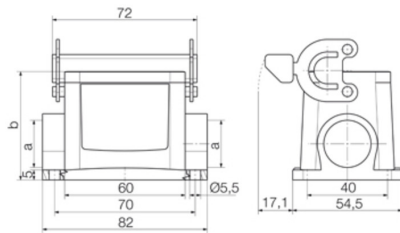
Catalogue status 20.04.2024 / We reserve the right to make technical changes.

HDC 06B SLU 1M20G

Weidmüller Interface GmbH & Co. KG
Klingenbergstraße 26
D-32758 Detmold
Germany

www.weidmueller.com

Drawings



HDC 06B SLU 1M20G**Weidmüller Interface GmbH & Co. KG**

Klingenbergstraße 26

D-32758 Detmold

Germany

www.weidmueller.com**Accessories****Cover**

The special die-cast alloy and the multi-layered surface sealing provide complete protection for the HDC housings.

The cleverly designed interlock system is manufactured from stainless steel. This guarantees a long lifespan with high resistance to corrosion and impact.

The housing interlock system provides integrated safety. Our unique, patented spring system provides the housing interlock with a secure grip and prevents accidental opening.

The laser marking allows for easy and quick identification. Each housing is permanently labelled with a laser marking so that each product can be quickly designated and positioned.

Weidmüller RockStar® IP 65 / NEMA Type 4X housings - your first choice for industrial housings with IP 65 protection.

General ordering data

Type	HDC 06B DODL 2B0	Version
Order No.	1665200000	HDC enclosures, Size: 3, Protection degree: IP65 (in plugged condition), Cover for lower part of housing, End-locking clamp, lower side, Standard
GTIN (EAN)	4008190421908	
Qty.	1 pc(s).	