

SAIL-VSBD-M12W-5.0U**Weidmüller Interface GmbH & Co. KG**

Klingenbergstraße 26

D-32758 Detmold

Germany

www.weidmueller.com

Weidmüller can supply valve plugs as connecting lines with M12 plugs and one end without connector. The status of the valve plug is shown by an LED. Every valve plug is fitted with a protective circuit. The Weidmüller range includes valve plugs of type A, B and C to DIN and industry standards. In the plugged condition they achieve IP 67 class of protection. The outlet direction is also a decisive factor: Weidmüller can also supply 0° versions, i.e. the cable outlet direction is located at the PE contact.

General ordering data

Version	Valve plug, 90° plug - valve plug, BD
Order No.	1857710500
Type	SAIL-VSBD-M12W-5.0U
GTIN (EAN)	4032248404049
Qty.	1 pc(s).

SAIL-VSBD-M12W-5.0U**Weidmüller Interface GmbH & Co. KG**

Klingenbergstraße 26

D-32758 Detmold

Germany

www.weidmueller.com

Technical data**Dimensions and weights**

Net weight 304 g

Technical specifications for cable

Acceleration	5 m/s ²	Bending cycles	2 Mio
Bending radius, min., moving	10 x cable diameter	Bending radius, min., stationary	5 x cable diameter
Cable length	5 m	Colour coding	brown, blue, Green/yellow
Core cross-section	0.5 mm ²	Halogen	No
Insulation	PP	Number of poles	3
Outside diameter	4.6 mm ± 0.2 mm	Resistant to welding beads	No
Sheath material	PUR	Sheathing colour	black
Shielded	No	Speed	200 m/s
Suitable for cable carriers	Yes	Temperature range, moving	-25...80 °C
Temperature range, stationary	-50...80 °C	Torsion resistance	0 °/m
Welding spark resistance	No		

General technical data

All valve plugs are fitted with protective circuits	Zener diode	Coding	DIN design B (10 mm), M12 = A-coded
Connection thread	Miscellaneous	Contact material	CuZn
Contact surface	tinned	LED	Yes
Protection degree	IP67, when screwed in	Rated current	4 A
Rated voltage	24 V	Temperature range of housing	-25...+80 °C
Tightening torque	Mounting screw M3: 0.4 Nm, M12: 0.8 - 1.2 Nm	Version	90° plug - valve plug

Classifications

ETIM 6.0	EC001855	ETIM 7.0	EC001855
ETIM 8.0	EC001855	ETIM 9.0	EC001855
ECLASS 9.0	27-06-03-12	ECLASS 9.1	27-06-03-11
ECLASS 10.0	27-06-03-12	ECLASS 11.0	27-06-03-12
ECLASS 12.0	27-06-03-12	ECLASS 13.0	27-06-03-12

Environmental Product Compliance

REACH SVHC Lead 7439-92-1

Approvals

Approvals



ROHS Conform

Downloads

Catalogues [Catalogues in PDF-format](#)
 Brochures [FL FIELDWIRING EN](#)

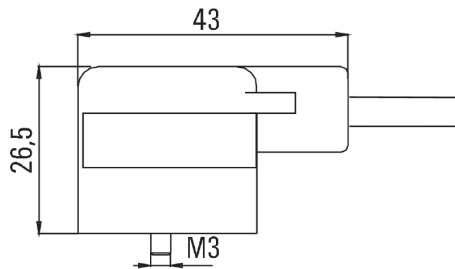
SAIL-VSBD-M12W-5.0U

Weidmüller Interface GmbH & Co. KG
Klingenbergstraße 26
D-32758 Detmold
Germany

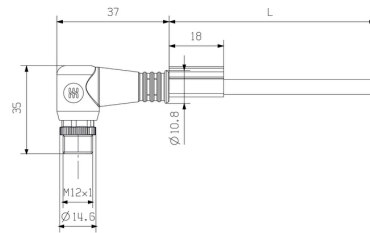
www.weidmueller.com

Drawings

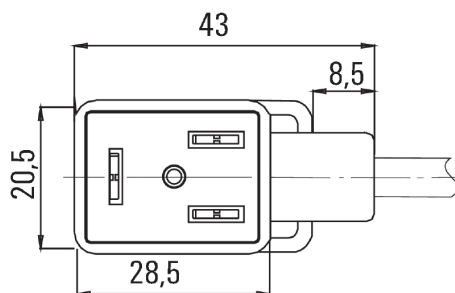
Dimensioned drawing



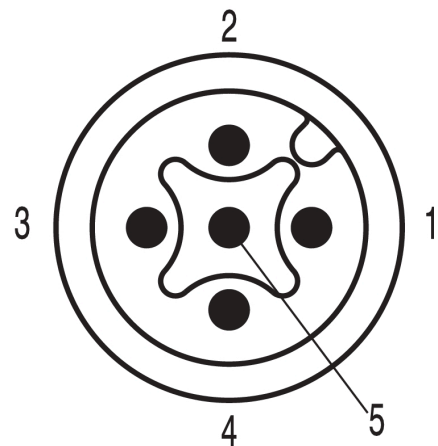
Dimensioned drawing



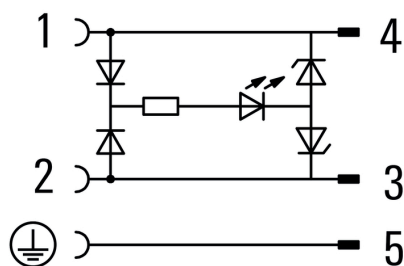
Pole scheme



Pole scheme



Wiring diagram



24V_{AC/DC} _4A