

**WF 10/2BZ****Weidmüller Interface GmbH & Co. KG**

Klingenbergstraße 26

D-32758 Detmold

Germany

[www.weidmueller.com](http://www.weidmueller.com)**Product image**

The comprehensive range of stud terminals ensures secure connections for all power transmission applications. Connections range from 10 mm<sup>2</sup> to 300 mm<sup>2</sup>. The connectors are attached to the threaded pins using crimped cable lugs and each connection is secured by tightening the hexagon nut. Stud terminals with threaded pins from M5 to M16 can be used according to the wire cross-section.

**General ordering data**

Version	Bolt-type screw terminals, Feed-through terminal, Rated cross-section: 120 mm <sup>2</sup> , Threaded stud connection
Order No.	<a href="#">1789790000</a>
Type	WF 10/2BZ
GTIN (EAN)	4032248251162
Qty.	10 pc(s).

## WF 10/2BZ

Weidmüller Interface GmbH &amp; Co. KG

Klingenbergstraße 26

D-32758 Detmold

Germany

www.weidmueller.com

## Technical data

## Dimensions and weights

Depth	72.5 mm	Depth (inches)	2.854 inch
Height	87.6 mm	Height (inches)	3.449 inch
Width	33.8 mm	Width (inches)	1.331 inch
Net weight	221.75 g		

## Temperatures

Storage temperature	-25 °C...55 °C	Continuous operating temp., min.	-50 °C
Continuous operating temp., max.	120 °C		

## Material data

Material	Wemid	Colour	dark beige
UL 94 flammability rating	V-0		

## System specifications

Number of levels	1	Number of clamping points per level	3
Levels cross-connected internally	No	PE connection	No
Rail	TS 35		

## Additional technical data

Explosion-tested version	No	Open sides	Open
Type of mounting	Snap-on		

## CSA rating data

Certificate No. (CSA)	200039-1244019	Current size C (CSA)	230 A
Voltage size C (CSA)	1000 V		

## Conductors for clamping (rated connection)

2 x cable lugs DIN 46 234	6 to 120 mm <sup>2</sup>	2 x cable lugs DIN 46 235	10...95 mm <sup>2</sup>
Cable lug to DIN 46234	6...120 mm <sup>2</sup>	Cable lug to DIN 46235	10...95 mm <sup>2</sup>
Clamping range, max.	120 mm <sup>2</sup>	Clamping range, min.	6 mm <sup>2</sup>
Number of connections	3	Stud size for spade connection	M 10
Tightening torque, max.	20 Nm	Tightening torque, min.	10 Nm
Type of connection	Threaded stud connection		

## General

Rail	TS 35
------	-------

## Rating data

Rated cross-section	120 mm <sup>2</sup>	Rated voltage	1,000 V
Rated DC voltage	1,000 V	Rated current	269 A
Current at maximum wires	269 A	Volume resistance according to IEC 60947-7-x	0.12 mΩ
Rated impulse withstand voltage	8 kV	Power loss in accordance with IEC 60947-7-x	8.61 W
Pollution severity	3		

## WF 10/2BZ

Weidmüller Interface GmbH &amp; Co. KG

Klingenbergstraße 26

D-32758 Detmold

Germany

www.weidmueller.com

## Technical data

## UL rating data

Certificate No. (cURus)	E60693	Conductor size Factory wiring max. (cURus)	0000 AWG
Conductor size Factory wiring min. (cURus)	0000 AWG	Current size C (cURus)	230 A
Voltage size C (cURus)	1000 V		

## Classifications

ETIM 6.0	EC000897	ETIM 7.0	EC000897
ETIM 8.0	EC000897	ETIM 9.0	EC000897
ECLASS 9.0	27-14-11-20	ECLASS 9.1	27-14-11-20
ECLASS 10.0	27-14-11-20	ECLASS 11.0	27-14-11-20
ECLASS 12.0	27-14-11-20	ECLASS 13.0	27-25-01-01

## Approvals

Approvals



ROHS	Conform
UL File Number Search	UL Website
Certificate No. (cURus)	E60693

## Downloads

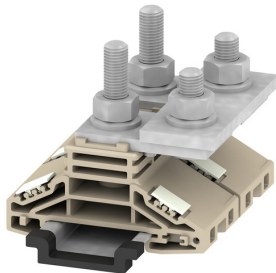
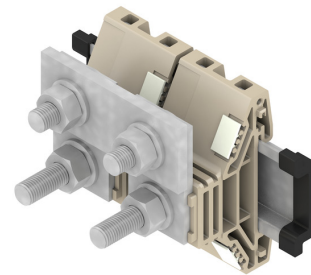
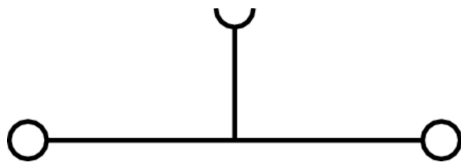
Approval/Certificate/Document of Conformity	<a href="#">CB Test Certificate</a> <a href="#">CB Certificate</a> <a href="#">CE Declaration of Conformity</a> <a href="#">UKCA declaration of conformity</a> <a href="#">Confirmation of Standards EN 45545-2_2020-10</a>
Engineering Data	<a href="#">CAD data – STEP</a>
User Documentation	<a href="#">StorageConditionsTerminalBlocks</a>
Catalogues	<a href="#">Catalogues in PDF-format</a>
Brochures	

## WF 10/2BZ

**Weidmüller Interface GmbH & Co. KG**  
Klingenbergstraße 26  
D-32758 Detmold  
Germany

[www.weidmueller.com](http://www.weidmueller.com)

## Drawings



**WF 10/2BZ****Weidmüller Interface GmbH & Co. KG**

Klingenbergstraße 26

D-32758 Detmold

Germany

[www.weidmueller.com](http://www.weidmueller.com)**Accessories****Standard**

Screwable cross-connections are easy to mount and de mount. Thanks to the big contact surface, even high currents can be transmitted with maximum contact reliability.

**General ordering data**

Type	WQL 3 WF10	Version
Order No.	<a href="#">1781020000</a>	Bolt-type screw terminals, Cross-connector, Number of poles: 3
GTIN (EAN)	4032248241217	
Qty.	5 pc(s).	
Type	WQL 2 WF10	Version
Order No.	<a href="#">1781010000</a>	Bolt-type screw terminals, Cross-connector, Number of poles: 2
GTIN (EAN)	4032248219421	
Qty.	5 pc(s).	

**WF/WFF-Series**

The additional connection enables a separate voltage tap. This can be used, for example, for the emergency power supply before the main switch or simply as an additional connection within the application.

**General ordering data**

Type	WZAF 120	Version
Order No.	<a href="#">1066300000</a>	Auxiliary connection (terminal)
GTIN (EAN)	4008190024642	
Qty.	10 pc(s).	

## WF 10/2BZ

Weidmüller Interface GmbH &amp; Co. KG

Klingenbergstraße 26

D-32758 Detmold

Germany

www.weidmueller.com

## Accessories

## Cover profiles



Cover profiles provide protection against external impact on functional areas of the terminal blocks or in combination with our support brackets for the entire terminal strip. They provide protection against electric shock caused by accidental contact with live parts due to operation or faults.

## General ordering data

Type	HA ADP WF6/WF10	Version
Order No.	<a href="#">1781050000</a>	Bolt-type screw terminals, Cover profile, dark beige, 2.2 mm
GTIN (EAN)	4032248241231	
Qty.	10 pc(s).	
Type	ADP WF10/WF12	Version
Order No.	<a href="#">1780940000</a>	Bolt-type screw terminals, Cover profile, Transparent, 1000 mm
GTIN (EAN)	4032248241255	
Qty.	1 m	

## WF / WFF-Series



A partition plate is used for the optical separation of circuits or used for electrical isolation from neighbouring cross-connectors. In contrast to the end plate, the contour can be larger than the adjacent terminal blocks. However, it should not be smaller, as otherwise the required clearance and creepage distances within the application can no longer be maintained.

## General ordering data

Type	WTW WF10/WF12	Version
Order No.	<a href="#">1780890000</a>	Bolt-type screw terminals, Partition plate, dark beige, 3 mm
GTIN (EAN)	4032248219391	
Qty.	20 pc(s).	
Type	WTW WF10/WF12 2300	Version
Order No.	<a href="#">1780920000</a>	Bolt-type screw terminals, Partition plate, grey, 2 mm
GTIN (EAN)	4032248241149	
Qty.	20 pc(s).	

**WF 10/2BZ****Weidmüller Interface GmbH & Co. KG**

Klingenbergstraße 26

D-32758 Detmold

Germany

[www.weidmueller.com](http://www.weidmueller.com)**Accessories****W-Series**

Weidmüller's range of products includes end brackets that guarantee a permanent, reliable mounting on the terminal rail and prevent sliding. Versions with and without screws are available. The end brackets include marking options, also for group markers, and also a test plug holder.

**General ordering data**

Type	WEW 35/2	Version
Order No.	<a href="#">1061200000</a>	End bracket, Wemid, dark beige, Rail: TS 35, when screwed in
GTIN (EAN)	4008190030230	
Qty.	50 pc(s).	

**Marker holder**

The marker holder offer the possibility of additional mounting of standard markers with a pitch of 5 or 5.1 mm. The angled holders can be optionally snapped together and could be mounted in all standard marking channels of the Klippon® Connect modular terminal blocks. Fitting marker types could be found under the respective accessories of the designation marking holder.

**General ordering data**

Type	BZT 1 ZA WS 10/5	Version
Order No.	<a href="#">1805520000</a>	Accessories, Marker holder
GTIN (EAN)	4032248270248	
Qty.	100 pc(s).	

Type	BZT 1 WS 10/5	Version
Order No.	<a href="#">1805490000</a>	Accessories, Marker holder
GTIN (EAN)	4032248270231	
Qty.	100 pc(s).	

## WF 10/2BZ

Weidmüller Interface GmbH &amp; Co. KG

Klingenbergstraße 26

D-32758 Detmold

Germany

www.weidmueller.com

## Accessories

## Blank



WS markers are the perfect match for the W-series connectors. Thanks to their system compatibility, the WS tags can also be used with the I-series and the Z-series. The large marking surfaces do not only permit long character strings but also multi-line text. WS markers are ideal for labels with long, customised character strings. Thanks to the proven MultiCard format, printing with PrintJet CONNECT oder/or Plotter is possible.

- Can be fitted in strips or individually
- Markers in proven MultiCard format

**For custom printing:** Please send us a file of our labeling software M-Print PRO or M-Print PRO Online (without installation) for your labeling specifications.

## General ordering data

Type	WS 10/5 MC NE WS	Version
Order No.	<a href="#">1635000000</a>	WS, Terminal marker, 10 x 5 mm, Pitch in mm (P): 5.00 Weidmueller,
GTIN (EAN)	4008190261948	Allen-Bradley, white
Qty.	720 pc(s).	

## Blank



WS markers are the perfect match for the W-series connectors. Thanks to their system compatibility, the WS tags can also be used with the I-series and the Z-series. The large marking surfaces do not only permit long character strings but also multi-line text. WS markers are ideal for labels with long, customised character strings. Thanks to the proven MultiCard format, printing with PrintJet CONNECT oder/or Plotter is possible.

- Can be fitted in strips or individually
- Markers in proven MultiCard format

**For custom printing:** Please send us a file of our labeling software M-Print PRO or M-Print PRO Online (without installation) for your labeling specifications.

## General ordering data

Type	WS 15/5 MC NE WS	Version
Order No.	<a href="#">1609880000</a>	WS, Terminal marker, 15 x 5 mm, Pitch in mm (P): 5.00 Weidmueller,
GTIN (EAN)	4008190203504	Allen-Bradley, white
Qty.	480 pc(s).	