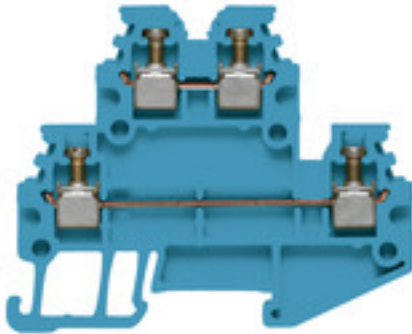


WDK 1.5/R3.5 BL**Weidmüller Interface GmbH & Co. KG**

Klingenbergstraße 26

D-32758 Detmold

Germany

www.weidmueller.com**Product image**

To feed through power, signal, and data is the classical requirement in electrical engineering and panel building. The insulating material, the connection system and the design of the terminal blocks are the differentiating features. A feed-through terminal block is suitable for joining and/or connecting one or more conductors. They could have one or more connection levels that are on the same potential or insulated against one another.

General ordering data

| | |
|------------|---|
| Version | Multi-tier modular terminal, Screw connection, 1.5 mm ² , 400 V, 16 A, Number of levels: 2, blue |
| Order No. | 1754180000 |
| Type | WDK 1.5/R3.5 BL |
| GTIN (EAN) | 4032248020768 |
| Qty. | 100 pc(s). |

WDK 1.5/R3.5 BL

Weidmüller Interface GmbH & Co. KG

Klingenbergstraße 26

D-32758 Detmold

Germany

www.weidmueller.com

Technical data

Dimensions and weights

| | | | |
|------------|---------|-----------------|------------|
| Depth | 37.5 mm | Depth (inches) | 1.476 inch |
| Height | 46.5 mm | Height (inches) | 1.831 inch |
| Width | 3.5 mm | Width (inches) | 0.138 inch |
| Net weight | 4.22 g | | |

Temperatures

| | | | |
|----------------------------------|----------------|----------------------------------|---|
| Storage temperature | | Operating temperature range | For operating temperature range see EC Design Test Certificate / IEC Ex-Certificate of Conformity |
| | -25 °C...55 °C | | |
| Continuous operating temp., min. | -60 °C | Continuous operating temp., max. | 130 °C |

Material data

| | | | |
|---------------------------|-------|--------|------|
| Material | Wemid | Colour | blue |
| UL 94 flammability rating | V-0 | | |

Rating data IECEx/ATEX

| | | | |
|--------------------------------|---|---------------------------------|---------------------|
| Certificate No. (ATEX) | DEMKO15ATEX1346U | Certificate No. (IECEX) | IECEXULD15.0003U |
| Max. voltage (ATEX) | 275 V | Current (ATEX) | 15 A |
| Wire cross section max. (ATEX) | 1.5 mm ² | Max. voltage (IECEX) | 275 V |
| Current (IECEX) | 15 A | Wire cross section max. (IECEX) | 1.5 mm ² |
| Operating temperature range | For operating temperature range see EC Design Test Certificate / IEC Ex-Certificate of Conformity | Marking EN 60079-7 | |
| Ex 2014/34/EU label | II 2 G D | | Ex eb II C Gb |

System specifications

| | | | |
|-----------------------------------|--|-------------------------------------|-----|
| Version | Screw connection, for plug-in cross-connector, One end without connector | End cover plate required | Yes |
| Number of levels | 2 | Number of clamping points per level | 2 |
| Levels cross-connected internally | No | PE connection | No |
| Rail | TS 15 | | |

2 clampable conductors (H05V/H07V) with equal cross-section (rated connection)

| | | | |
|--|---------------------|--|----------------------|
| Wire connection cross section, finely stranded with wire-end ferrules DIN 46228/1, 2 clampable wires, max. | 0.5 mm ² | Wire connection cross section, finely stranded with wire-end ferrules DIN 46228/1, 2 clampable wires, min. | 0.5 mm ² |
| Wire connection cross section, finely stranded, two clampable wires, min. | 0.5 mm ² | Wire cross-section, finely stranded, two clampable wires, max. | 0.75 mm ² |

Additional technical data

| | | | |
|--------------------------|-------|-----------------------------|---------|
| Explosion-tested version | Yes | Number of similar terminals | 1 |
| Open sides | right | Type of mounting | Snap-on |

WDK 1.5/R3.5 BL

Weidmüller Interface GmbH & Co. KG

Klingenbergstraße 26

D-32758 Detmold

Germany

www.weidmueller.com

Technical data

CSA rating data

| | | | |
|-------------------------------|-----------|-------------------------------|--------|
| Certificate No. (CSA) | 12400-398 | Current size D (CSA) | 10 A |
| Voltage size D (CSA) | 300 V | Wire cross section max. (CSA) | 14 AWG |
| Wire cross section min. (CSA) | 26 AWG | | |

Conductors for clamping (additional connection)

Conductor cross-section, flexible plus plastic collar DIN 46228/1, further connection, max. 1.5 mm²

Conductors for clamping (rated connection)

| | | | |
|---|----------------------|---|---------------------|
| Blade size | 0.4 x 2.5 mm | Clamping range, max. | 1.5 mm ² |
| Clamping range, min. | 0.13 mm ² | Clamping screw | M 2 |
| Connection cross-section, stranded, max. | 1.5 mm ² | Connection cross-section, stranded, min. | 1.5 mm ² |
| Connection direction | on side | Gauge to IEC 60947-1 | A1 |
| Number of connections | 4 | Stripping length | 7 mm |
| Tightening torque, max. | 0.3 Nm | Tightening torque, min. | 0.3 Nm |
| Type of connection | Screw connection | Wire connection cross section AWG, max. | AWG 14 |
| Wire connection cross section AWG, min. | AWG 26 | Wire connection cross section, finely stranded, max. | 1.5 mm ² |
| Wire connection cross section, finely stranded, min. | 0.5 mm ² | Wire connection cross-section, finely stranded with wire-end ferrules DIN 46228/1, max. | 1.5 mm ² |
| Wire connection cross-section, finely stranded with wire-end ferrules DIN 46228/1, min. | 0.5 mm ² | Wire connection cross-section, finely stranded with wire-end ferrules DIN 46228/4, max. | 0.5 mm ² |
| Wire connection cross-section, finely stranded with wire-end ferrules DIN 46228/4, min. | 0.5 mm ² | Wire connection cross-section, solid core, max. | 1.5 mm ² |
| Wire connection cross-section, solid core, min. | 0.5 mm ² | | |

Dimensions

| | |
|--------------|---------|
| TS 15 offset | 13.5 mm |
|--------------|---------|

General

| | | | |
|---|--------|---|---------------|
| Rail | TS 15 | Standards | IEC 60947-7-1 |
| Wire connection cross section AWG, max. | AWG 14 | Wire connection cross section AWG, min. | AWG 26 |

Rating data

| | | | |
|--|---------------------|---------------------------------|---------------|
| Rated cross-section | 1.5 mm ² | Rated voltage | 400 V |
| Rated DC voltage | 400 V | Rated current | 16 A |
| Current at maximum wires | 16 A | Standards | IEC 60947-7-1 |
| Volume resistance according to IEC 60947-7-x | 1.83 mΩ | Rated impulse withstand voltage | 4 kV |
| Power loss in accordance with IEC 60947-7-x | 0.56 W | Pollution severity | 3 |

WDK 1.5/R3.5 BL

Weidmüller Interface GmbH & Co. KG

Klingenbergstraße 26

D-32758 Detmold

Germany

www.weidmueller.com

Technical data

UL rating data

| | | | |
|---|--------|---|--------|
| Certificate No. (UR) | E60693 | Conductor size Factory wiring max. (UR) | 14 AWG |
| Conductor size Factory wiring min. (UR) | 26 AWG | Conductor size Field wiring max. (UR) | 14 AWG |
| Conductor size Field wiring min. (UR) | 26 AWG | Current size B (UR) | 15 A |
| Current size D (UR) | 10 A | Voltage size B (UR) | 300 V |
| Voltage size D (UR) | 300 V | | |

Classifications

| | | | |
|-------------|-------------|-------------|-------------|
| ETIM 6.0 | EC000897 | ETIM 7.0 | EC000897 |
| ETIM 8.0 | EC000897 | ETIM 9.0 | EC000897 |
| ECLASS 9.0 | 27-14-11-20 | ECLASS 9.1 | 27-14-11-20 |
| ECLASS 10.0 | 27-14-11-20 | ECLASS 11.0 | 27-14-11-20 |
| ECLASS 12.0 | 27-14-11-20 | ECLASS 13.0 | 27-25-01-02 |

Approvals

Approvals



| | |
|-----------------------|------------|
| ROHS | Conform |
| UL File Number Search | UL Website |
| Certificate No. (UR) | E60693 |

Downloads

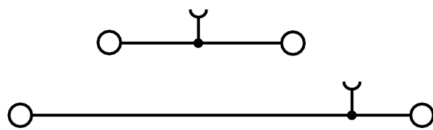
| | |
|---|---|
| Approval/Certificate/Document of Conformity | Attestation of Conformity UKCA Ex Attestation of Conformity ATEX Certificate ATEX Certificate CB Certificate CB Certificate CCC Ex Certificate UKCA Ex Certificate CE Declaration of Conformity UKCA declaration of conformity Confirmation of Standards EN 45545-2_2020-10 |
| Engineering Data | CAD data – STEP |
| Engineering Data | Zuken E3.S |
| User Documentation | StorageConditionsTerminalBlocks NTI WDK-WPE 1.5 R3.5 |
| Catalogues | Catalogues in PDF-format |

WDK 1.5/R3.5 BL

Weidmüller Interface GmbH & Co. KG
Klingenbergstraße 26
D-32758 Detmold
Germany

www.weidmueller.com

Drawings



WDK 1.5/R3.5 BL**Weidmüller Interface GmbH & Co. KG**

Klingenbergstraße 26

D-32758 Detmold

Germany

www.weidmueller.com**Accessories****Blank**

The Dekafix (DEK) marker is the universal marker for all conductor and plug-in connectors as well as for electronic sub-assemblies. The system is ideal for short number sequences and covers a wide range of ready-printed markers.

Strips for fast installation in only one work step. The printing is easy to read, rich in contrast and available in various widths.

- Large range of ready-to-use markers
- Strips for fast installation
- Terminal markers, suitable for all Weidmüller cable connectors
- Available as blank MultiCard or with standard printing

For custom printing: Please send us a file of our labeling software M-Print PRO or M-Print PRO Online (without installation) for your labeling specifications.

General ordering data

| | | |
|------------|----------------------------|---|
| Type | DEK 5/3.5 MC NE WS | Version |
| Order No. | 1755270000 | Dekafix, Terminal marker, 5 x 3.5 mm, Pitch in mm (P): 3.50 |
| GTIN (EAN) | 4032248017348 | Weidmueller, white |
| Qty. | 500 pc(s). | |

WDK 1.5/R3.5 BL

Weidmüller Interface GmbH & Co. KG

Klingenbergstraße 26

D-32758 Detmold

Germany

www.weidmueller.com

Accessories

DEK 5/3.5



WS/ DEK

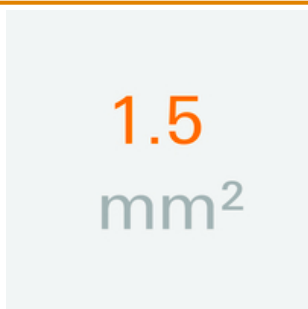
MultiMark terminal markers use an innovative composite material made from two components. The hard base contour of the marker snaps securely into the connector. The elastic surface finish makes the marker easy to mount. This specially punched material enables the strips to be stretched to accommodate the slight variations in spacing that tend to add up, especially with long terminal blocks. Another advantage: the excellent printability of the surface material guarantees durable and wear-resistant labelling. A print resolution of 300 dpi also produces a very legible script.

Your benefits with MultiMark

- Firm hold and durable printing
- Continuous strips save installation time
- Easy mounting thanks to an innovative composite material
- Large label field for optimal legibility
- High flexibility thanks to manufacturer independence

General ordering data

| | | |
|------------|----------------------------|--|
| Type | DEK 5/3.5 MM WS | Version |
| Order No. | 2007100000 | Dekafix, Terminal marker, 5 x 3.5 mm, Weidmueller, white |
| GTIN (EAN) | 4050118391992 | |
| Qty. | 1,000 pc(s). | |

1.5 mm²

End plates are fitted to the open side of the last modular terminal before the end bracket. The use of an end plate ensures the function of the modular terminal and the specified rated voltage. It guarantees protection against contact with live parts and makes the final terminal finger-proof.

General ordering data

| | | |
|------------|----------------------------|---|
| Type | WAP WDK1.5/R3.5 | Version |
| Order No. | 1754200000 | End plate (terminals), 47 mm x 1.5 mm, dark beige |
| GTIN (EAN) | 4032248022410 | |
| Qty. | 20 pc(s). | |

WDK 1.5/R3.5 BL

Weidmüller Interface GmbH & Co. KG

Klingenbergstraße 26

D-32758 Detmold

Germany

www.weidmueller.com

Accessories

Slotted screwdriver



VDE insulated slot-head screwdriver, SDI DIN 7437, ISO 2380/2, drive output acc. to DIN 5264, ISO 2380/1. SoftFinish grip

General ordering data

| | | |
|------------|----------------------------|--------------------------|
| Type | SDIS 0.4X2.5X75 | Version |
| Order No. | 9008370000 | Screwdriver, Screwdriver |
| GTIN (EAN) | 4032248056330 | |
| Qty. | 1 pc(s). | |

1.5 mm²

Screwable cross-connections are easy to mount and de mount. Thanks to the big contact surface, even high currents can be transmitted with maximum contact reliability.

General ordering data

| | | |
|------------|----------------------------|--------------------------------------|
| Type | ZQV 1.5N/R3.5/4 GE | Version |
| Order No. | 1754230000 | Accessories, Cross-connector, 17.5 A |
| GTIN (EAN) | 4032248103874 | |
| Qty. | 20 pc(s). | |
| Type | ZQV 1.5N/R3.5/8 GE | Version |
| Order No. | 1754270000 | Accessories, Cross-connector, 17.5 A |
| GTIN (EAN) | 4032248109708 | |
| Qty. | 20 pc(s). | |
| Type | ZQV 1.5N/R3.5/5 GE | Version |
| Order No. | 1754240000 | Accessories, Cross-connector, 17.5 A |
| GTIN (EAN) | 4032248109647 | |
| Qty. | 20 pc(s). | |
| Type | ZQV 1.5N/R3.5/30 GE | Version |
| Order No. | 1754300000 | Accessories, Cross-connector, 17.5 A |
| GTIN (EAN) | 4032248027392 | |
| Qty. | 10 pc(s). | |
| Type | ZQV 1.5N/R3.5/6 GE | Version |
| Order No. | 1754250000 | Accessories, Cross-connector, 17.5 A |
| GTIN (EAN) | 4032248103881 | |
| Qty. | 20 pc(s). | |

WDK 1.5/R3.5 BL

Weidmüller Interface GmbH & Co. KG

Klingenbergstraße 26

D-32758 Detmold

Germany

www.weidmueller.com

Accessories

| | | |
|------------|----------------------------|--------------------------------------|
| Type | ZQV 1.5N/R3.5/9 GE | Version |
| Order No. | 1754280000 | Accessories, Cross-connector, 17.5 A |
| GTIN (EAN) | 4032248109876 | |
| Qty. | 20 pc(s). | |
| Type | ZQV 1.5N/R3.5/3 GE | Version |
| Order No. | 1754220000 | Accessories, Cross-connector, 17.5 A |
| GTIN (EAN) | 4032248065608 | |
| Qty. | 50 pc(s). | |
| Type | ZQV 1.5N/R3.5/10 GE | Version |
| Order No. | 1754290000 | Accessories, Cross-connector, 17.5 A |
| GTIN (EAN) | 4032248027415 | |
| Qty. | 20 pc(s). | |
| Type | ZQV 1.5N/R3.5/7 GE | Version |
| Order No. | 1754260000 | Accessories, Cross-connector, 17.5 A |
| GTIN (EAN) | 4032248109692 | |
| Qty. | 20 pc(s). | |
| Type | ZQV 1.5N/R3.5/2 GE | Version |
| Order No. | 1754210000 | Accessories, Cross-connector, 17.5 A |
| GTIN (EAN) | 4032248027422 | |
| Qty. | 50 pc(s). | |

TS 15



Weidmüller's range of products includes end brackets that guarantee a permanent, reliable mounting on the terminal rail and prevent sliding. Versions with and without screws are available. The end brackets include marking options, also for group markers, and also a test plug holder.

General ordering data

| | | |
|------------|----------------------------|--|
| Type | EW 15 | Version |
| Order No. | 0382860000 | End bracket, Polyamide 66, beige, Rail: TS 15, Direct mounting |
| GTIN (EAN) | 4008190187804 | |
| Qty. | 50 pc(s). | |