

HDC 16A DODL 1LB**Weidmüller Interface GmbH & Co. KG**

Klingenbergstraße 26

D-32758 Detmold

Germany

www.weidmueller.com

The special die-cast alloy and the multi-layered surface sealing provide complete protection for the HDC housings.

The cleverly designed interlock system is manufactured from stainless steel. This guarantees a long lifespan with high resistance to corrosion and impact.

The housing interlock system provides integrated safety. Our unique, patented spring system provides the housing interlock with a secure grip and prevents accidental opening.

The laser marking allows for easy and quick identification. Each housing is permanently labelled with a laser marking so that each product can be quickly designated and positioned.

Weidmüller RockStar® IP 65 / NEMA Type 4X housings - your first choice for industrial housings with IP 65 protection.

General ordering data

| | |
|------------|---|
| Version | HDC enclosures, Size: 5, Protection degree: IP65 (in plugged condition), Cover for lower part of housing, End-locking clamp, lower side, Standard |
| Order No. | 1665900000 |
| Type | HDC 16A DODL 1LB |
| GTIN (EAN) | 4008190422936 |
| Qty. | 1 pc(s). |

HDC 16A DODL 1LB

Weidmüller Interface GmbH & Co. KG

Klingenbergstraße 26

D-32758 Detmold

Germany

www.weidmueller.com

Technical data

Dimensions and weights

| | | | |
|------------|---------|-----------------|------------|
| Depth | 90 mm | Depth (inches) | 3.543 inch |
| Height | 12.5 mm | Height (inches) | 0.492 inch |
| Width | 29.5 mm | Width (inches) | 1.161 inch |
| Net weight | 79 g | | |

Temperatures

| | |
|-------------------|-------------------|
| Limit temperature | -40 °C ... 125 °C |
|-------------------|-------------------|

Dimensions

| | | | |
|----------------------|-----------|---------------------|---------|
| Cable entry | For hoods | Height of housing B | 19.5 mm |
| Total length housing | 79 mm | Width housing C | 29.5 mm |

General data

| | | | |
|-----------------------------|-----------------------------|-----------------------|-----------------------------|
| EMC housings | No | Housing main material | diecast aluminium |
| Material of locking element | Stainless steel, rust-proof | Protection degree | IP65 (in plugged condition) |
| Surface finish | Powder coating | Tightening torque | 0.5 Nm |

Version

| | | | |
|--------------------------|-------------------------------|-------------------|---------------------------------|
| BG | 5 | Cable entry | For hoods |
| Clamp version | End-locking clamp | Colour (RAL) | RAL 7035 |
| Design | Standard | Design of housing | Cover for lower part of housing |
| Design of locking system | End-locking clamp, lower side | Size | 5 |
| Suitable for ModuPlug® | No | Tightening torque | 0.5 Nm |
| Top part/bottom part/lid | Cover | Type | Cover |

Classifications

| | | | |
|-------------|-------------|-------------|-------------|
| ETIM 6.0 | EC000437 | ETIM 7.0 | EC000437 |
| ETIM 8.0 | EC000437 | ETIM 9.0 | EC000437 |
| ECLASS 9.0 | 27-44-02-02 | ECLASS 9.1 | 27-44-02-02 |
| ECLASS 10.0 | 27-44-02-02 | ECLASS 11.0 | 27-44-02-02 |
| ECLASS 12.0 | 27-44-02-02 | ECLASS 13.0 | 27-44-02-02 |

| | |
|---------------------|-------------------------|
| Substance | Acetone |
| Chemical resistance | Conditionally resistant |
| Substance | Drilling oil |
| Chemical resistance | Resistant |
| Substance | Diesel |
| Chemical resistance | Resistant |
| Substance | Ethyl alcohol |
| Chemical resistance | Resistant |
| Substance | Transmission oil |
| Chemical resistance | Resistant |

HDC 16A DODL 1LB**Weidmüller Interface GmbH & Co. KG**

Klingenbergstraße 26

D-32758 Detmold

Germany

www.weidmueller.com

Technical data

| | |
|---------------------|-------------------------|
| Substance | Hydraulic oil |
| Chemical resistance | Resistant |
| Substance | Coolant |
| Chemical resistance | Resistant |
| Substance | Petroleum benzine |
| Chemical resistance | Resistant |
| Substance | Sweat |
| Chemical resistance | Resistant |
| Substance | Premium gasoline |
| Chemical resistance | Conditionally resistant |
| Substance | Water |
| Chemical resistance | Resistant |
| Substance | UV |
| Chemical resistance | Unstable |
| Substance | Ozone |
| Chemical resistance | Unstable |

Environmental Product Compliance

| | |
|---------------------|--|
| REACH SVHC | Lead 7439-92-1 Potassium perfluorobutane sulfonate 29420-49-3 |
| SCIP | e98b2b24-ba23-41bf-8d19-Odda3647412f |
| Chemical resistance | de.myview.objectmodel.impl.BlockImpl@7a1ab15d de.myview.objectmodel.impl.BlockImpl@3a42a45e de.myview.objectmodel.impl.BlockImpl@675dc5c6 de.myview.objectmodel.impl.BlockImpl@510a234c de.myview.objectmodel.impl.BlockImpl@7eb5e069 de.myview.objectmodel.impl.BlockImpl@517adbb5 de.myview.objectmodel.impl.BlockImpl@588047a9 de.myview.objectmodel.impl.BlockImpl@58901fb6 de.myview.objectmodel.impl.BlockImpl@9f70a65 de.myview.objectmodel.impl.BlockImpl@e57cf9d de.myview.objectmodel.impl.BlockImpl@54b06cf1 de.myview.objectmodel.impl.BlockImpl@c05b47e de.myview.objectmodel.impl.BlockImpl@3d9033b9 |

Approvals

Approvals



| | |
|-------------------------|------------|
| ROHS | Conform |
| UL File Number Search | UL Website |
| Certificate No. (cURus) | E92202 |

Downloads

| | |
|---|--|
| Approval/Certificate/Document of Conformity | Manufacturer's declaration |
| Engineering Data | CAD data – STEP |
| Product Change Notification | 20220214 Technical change to HDC housings 20220214 Technische Änderung bei HDC-Gehäusen |
| Technical Documentation | 1665900000 HDC 16A DODL 1LB_STP_Blatt_1.pdf |
| Catalogues | Catalogues in PDF-format |
| Brochures | FL FIELDWIRING EN FL FIELDWIRING EN |

Creation date April 29, 2024 3:30:26 PM CEST

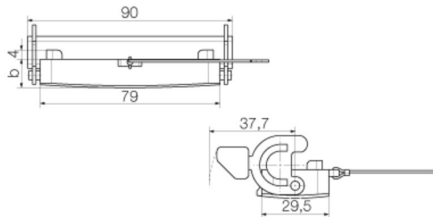
Catalogue status 20.04.2024 / We reserve the right to make technical changes.

HDC 16A DODL 1LB

Weidmüller Interface GmbH & Co. KG
Klingenbergstraße 26
D-32758 Detmold
Germany

www.weidmueller.com

Drawings



HDC 16A DODL 1LB

Weidmüller Interface GmbH & Co. KG
 Klingenbergstraße 26
 D-32758 Detmold
 Germany

www.weidmueller.com

Accessories

Hood, Cable Entry sideways



The special die-cast alloy and the multi-layered surface sealing provide complete protection for the HDC housings.

The cleverly designed interlock system is manufactured from stainless steel. This guarantees a long lifespan with high resistance to corrosion and impact.

The housing interlock system provides integrated safety. Our unique, patented spring system provides the housing interlock with a secure grip and prevents accidental opening.

The laser marking allows for easy and quick identification. Each housing is permanently labelled with a laser marking so that each product can be quickly designated and positioned.

Weidmüller RockStar® IP 65 / NEMA Type 4X housings - your first choice for industrial housings with IP 65 protection.

General ordering data

| | | |
|------------|----------------------------|--|
| Type | HDC 16A TSLU 1PG16G | Version |
| Order No. | 1664690000 | HDC enclosures, Size: 5, Protection degree: IP65 (in plugged condition), Cable entry from side, Plug housing, End-locking clamp, |
| GTIN (EAN) | 4008190421397 | lower side, Standard, Size of cable entries: PG 16 |
| Qty. | 1 pc(s). | |
| Type | HDC 25A TSLU 1PG21G | Version |
| Order No. | 1664750000 | HDC enclosures, Size: 5, Protection degree: IP65 (in plugged condition), Cable entry from side, Plug housing, End-locking clamp, |
| GTIN (EAN) | 4008190421458 | lower side, high, Size of cable entries: PG 21 |
| Qty. | 1 pc(s). | |
| Type | HDC 25A TSLU 1M20G | Version |
| Order No. | 1788680000 | HDC enclosures, Size: 5, Protection degree: IP65 (in plugged condition), Cable entry from side, Plug housing, End-locking clamp, |
| GTIN (EAN) | 4032248206223 | lower side, high, Size of cable entries: M 20 |
| Qty. | 1 pc(s). | |
| Type | HDC 16A TSLU 1M20G | Version |
| Order No. | 1041760000 | HDC enclosures, Size: 5, Protection degree: IP65 (in plugged condition), Cable entry from side, Plug housing, End-locking clamp, |
| GTIN (EAN) | 4032248771011 | lower side, Standard, Size of cable entries: M 20 |
| Qty. | 1 pc(s). | |
| Type | HDC 16A TSLU 1M25G | Version |
| Order No. | 1788740000 | HDC enclosures, Size: 5, Protection degree: IP65 (in plugged condition), Cable entry from side, Plug housing, End-locking clamp, |
| GTIN (EAN) | 4032248206285 | lower side, Standard, Size of cable entries: M 25 |
| Qty. | 1 pc(s). | |
| Type | HDC 25A TSLU 1M25G | Version |
| Order No. | 1788690000 | HDC enclosures, Size: 5, Protection degree: IP65 (in plugged condition), Cable entry from side, Plug housing, End-locking clamp, |
| GTIN (EAN) | 4032248206230 | lower side, high, Size of cable entries: M 25 |
| Qty. | 1 pc(s). | |
| Type | HDC 25A TSLU 1PG16G | Version |
| Order No. | 1664730000 | HDC enclosures, Size: 5, Protection degree: IP65 (in plugged condition), Cable entry from side, Plug housing, End-locking clamp, |
| GTIN (EAN) | 4008190421434 | lower side, high, Size of cable entries: PG 16 |
| Qty. | 1 pc(s). | |

HDC 16A DODL 1LB

Weidmüller Interface GmbH & Co. KG

Klingenbergstraße 26

D-32758 Detmold

Germany

www.weidmueller.com

Accessories

Hood, Cable Entry at top



The special die-cast alloy and the multi-layered surface sealing provide complete protection for the HDC housings.

The cleverly designed interlock system is manufactured from stainless steel. This guarantees a long lifespan with high resistance to corrosion and impact.

The housing interlock system provides integrated safety. Our unique, patented spring system provides the housing interlock with a secure grip and prevents accidental opening.

The laser marking allows for easy and quick identification. Each housing is permanently labelled with a laser marking so that each product can be quickly designated and positioned.

Weidmüller RockStar® IP 65 / NEMA Type 4X housings - your first choice for industrial housings with IP 65 protection.

General ordering data

| | | |
|------------|----------------------------|---|
| Type | HDC 16A TOLU 1M25G | Version |
| Order No. | 1788750000 | HDC enclosures, Size: 5, Protection degree: IP65 (in plugged condition), Cable entry from top, Plug housing, End-locking clamp, |
| GTIN (EAN) | 4032248206292 | lower side, Standard, Size of cable entries: M 25 |
| Qty. | 1 pc(s). | |
| Type | HDC 25A TOLU 1M25G | Version |
| Order No. | 1788700000 | HDC enclosures, Size: 5, Protection degree: IP65 (in plugged condition), Cable entry from top, Plug housing, End-locking clamp, |
| GTIN (EAN) | 4032248206247 | lower side, high, Size of cable entries: M 25 |
| Qty. | 1 pc(s). | |
| Type | HDC 25A TOLU 1PG21G | Version |
| Order No. | 1664870000 | HDC enclosures, Size: 5, Protection degree: IP65 (in plugged condition), Cable entry from top, Plug housing, End-locking clamp, |
| GTIN (EAN) | 4008190421571 | lower side, high, Size of cable entries: PG 21 |
| Qty. | 1 pc(s). | |
| Type | HDC 16A TOLU 1PG16G | Version |
| Order No. | 1664810000 | HDC enclosures, Size: 5, Protection degree: IP65 (in plugged condition), Cable entry from top, Plug housing, End-locking clamp, |
| GTIN (EAN) | 4008190421519 | lower side, Standard, Size of cable entries: PG 16 |
| Qty. | 1 pc(s). | |
| Type | HDC 25A TOLU 1M20G | Version |
| Order No. | 1788710000 | HDC enclosures, Size: 5, Protection degree: IP65 (in plugged condition), Cable entry from top, Plug housing, End-locking clamp, |
| GTIN (EAN) | 4032248206254 | lower side, high, Size of cable entries: M 20 |
| Qty. | 1 pc(s). | |