

**HDC 10B DMDQ 2QB****Weidmüller Interface GmbH & Co. KG**

Klingenbergstraße 26

D-32758 Detmold

Germany

[www.weidmueller.com](http://www.weidmueller.com)

The special die-cast alloy and the multi-layered surface sealing provide complete protection for the HDC housings.

The cleverly designed interlock system is manufactured from stainless steel. This guarantees a long lifespan with high resistance to corrosion and impact.

The housing interlock system provides integrated safety. Our unique, patented spring system provides the housing interlock with a secure grip and prevents accidental opening.

The laser marking allows for easy and quick identification. Each housing is permanently labelled with a laser marking so that each product can be quickly designated and positioned.

Weidmüller RockStar® IP 65 / NEMA Type 4X housings - your first choice for industrial housings with IP 65 protection.

**General ordering data**

Version	HDC enclosures, Size: 4, Protection degree: IP65 (in plugged condition), Cover for upper part of housing, Side-locking clamp on lower side, Standard
Order No.	<a href="#">1665240000</a>
Type	HDC 10B DMDQ 2QB
GTIN (EAN)	4008190421946
Qty.	1 pc(s).

**HDC 10B DMDQ 2QB****Weidmüller Interface GmbH & Co. KG**

Klingenbergstraße 26

D-32758 Detmold

Germany

www.weidmueller.com

**Technical data****Dimensions and weights**

Height	18 mm	Height (inches)	0.709 inch
Width	55 mm	Width (inches)	2.165 inch
Net weight	131 g		

**Temperatures**

Limit temperature	-40 °C ... 125 °C
-------------------	-------------------

**Dimensions**

Cable entry	For hoods	Height of housing B	18 mm
Total length housing	73 mm	Width housing C	43 mm

**General data**

EMC housings	No	Housing main material	diecast aluminium
Material of locking element		Protection degree	IP65 (in plugged condition)
Surface finish	Stainless steel, rust-proof		
	Powder coating		

**Version**

BG	4	Cable entry	For hoods
Clamp version	Side-locking clamp	Colour (RAL)	RAL 7035
Design		Design of housing	Cover for upper part of housing
	Standard		
Design of locking system	Side-locking clamp on lower side	Sealing	NBR
Size	4	Suitable for ModuPlug®	Yes
Top part/bottom part/lid	Cover	Type	Cover

**Classifications**

ETIM 6.0	EC000437	ETIM 7.0	EC000437
ETIM 8.0	EC000437	ETIM 9.0	EC000437
ECLASS 9.0	27-44-02-02	ECLASS 9.1	27-44-02-02
ECLASS 10.0	27-44-02-02	ECLASS 11.0	27-44-02-02
ECLASS 12.0	27-44-02-02	ECLASS 13.0	27-44-02-02

Substance	Acetone
Chemical resistance	Conditionally resistant
Substance	Drilling oil
Chemical resistance	Resistant
Substance	Diesel
Chemical resistance	Resistant
Substance	Ethyl alcohol
Chemical resistance	Resistant
Substance	Transmission oil
Chemical resistance	Resistant
Substance	Hydraulic oil

**HDC 10B DMDQ 2QB****Weidmüller Interface GmbH & Co. KG**

Klingenbergstraße 26

D-32758 Detmold

Germany

www.weidmueller.com

**Technical data**

Chemical resistance	Resistant
Substance	Coolant
Chemical resistance	Resistant
Substance	Petroleum benzine
Chemical resistance	Resistant
Substance	Sweat
Chemical resistance	Resistant
Substance	Premium gasoline
Chemical resistance	Conditionally resistant
Substance	Water
Chemical resistance	Resistant
Substance	UV
Chemical resistance	Unstable
Substance	Ozone
Chemical resistance	Unstable

**Environmental Product Compliance**

REACH SVHC	Lead 7439-92-1 Potassium perfluorobutane sulfonate 29420-49-3
SCIP	e98b2b24-ba23-41bf-8d19-0dda3647412f
Chemical resistance	de.myview.objectmodel.impl.BlockImpl@a38f700 de.myview.objectmodel.impl.BlockImpl@1226675 de.myview.objectmodel.impl.BlockImpl@2a8f4936 de.myview.objectmodel.impl.BlockImpl@55198d6b de.myview.objectmodel.impl.BlockImpl@1854e03f de.myview.objectmodel.impl.BlockImpl@ad73c8e de.myview.objectmodel.impl.BlockImpl@5ac1121b de.myview.objectmodel.impl.BlockImpl@43aabefd de.myview.objectmodel.impl.BlockImpl@7c40fbaf de.myview.objectmodel.impl.BlockImpl@4f409be5 de.myview.objectmodel.impl.BlockImpl@1d4319dc de.myview.objectmodel.impl.BlockImpl@b0801df de.myview.objectmodel.impl.BlockImpl@706e0e92

**Approvals**

Approvals



ROHS	Conform
UL File Number Search	UL Website
Certificate No. (cURus)	E92202

**Downloads**

Approval/Certificate/Document of Conformity	<a href="#">Manufacturer's declaration</a>
Engineering Data	<a href="#">CAD data – STEP</a>
Product Change Notification	<a href="#">20220214 Technical change to HDC housings</a> <a href="#">20220214 Technische Änderung bei HDC-Gehäusen</a>
Technical Documentation	<a href="#">1665240000_HDC_10B_DMDQ_2QB_STP_Blatt_1.pdf</a>
Catalogues	<a href="#">Catalogues in PDF-format</a>
Brochures	<a href="#">FL FIELDWIRING EN</a> <a href="#">FL FIELDWIRING EN</a>

Creation date April 29, 2024 4:35:22 AM CEST

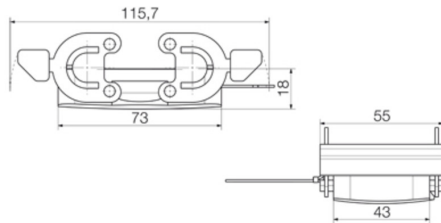
Catalogue status 20.04.2024 / We reserve the right to make technical changes.

## HDC 10B DMDQ 2QB

**Weidmüller Interface GmbH & Co. KG**  
Klingenbergstraße 26  
D-32758 Detmold  
Germany

[www.weidmueller.com](http://www.weidmueller.com)

## Drawings



## HDC 10B DMDQ 2QB

Weidmüller Interface GmbH &amp; Co. KG

Klingenbergstraße 26

D-32758 Detmold

Germany

www.weidmueller.com

## Accessories

## Hood, Cable Entry sideways



The special die-cast alloy and the multi-layered surface sealing provide complete protection for the HDC housings.

The cleverly designed interlock system is manufactured from stainless steel. This guarantees a long lifespan with high resistance to corrosion and impact.

The housing interlock system provides integrated safety. Our unique, patented spring system provides the housing interlock with a secure grip and prevents accidental opening.

The laser marking allows for easy and quick identification. Each housing is permanently labelled with a laser marking so that each product can be quickly designated and positioned.

Weidmüller RockStar® IP 65 / NEMA Type 4X housings - your first choice for industrial housings with IP 65 protection.

## General ordering data

Type	HDC 24D TSBU 1PG29G	Version
Order No.	<a href="#">1654170000</a>	HDC enclosures, Size: 4, Protection degree: IP65 (in plugged condition), Cable entry from side, Plug housing, Side-locking clamp on lower side, high, Size of cable entries: PG 29
GTIN (EAN)	4008190406998	
Qty.	1 pc(s).	
Type	HDC 10B TSBU 1PG21G	Version
Order No.	<a href="#">1654090000</a>	HDC enclosures, Size: 4, Protection degree: IP65 (in plugged condition), Cable entry from side, Plug housing, Side-locking clamp on lower side, Standard, Size of cable entries: PG 21
GTIN (EAN)	4008190406912	
Qty.	1 pc(s).	
Type	HDC 10B TSBU 1M20G	Version
Order No.	<a href="#">1787560000</a>	HDC enclosures, Size: 4, Protection degree: IP65 (in plugged condition), Cable entry from side, Plug housing, Side-locking clamp on lower side, Standard, Size of cable entries: M 20
GTIN (EAN)	4032248204908	
Qty.	1 pc(s).	
Type	HDC 24D TSBU 1M32G	Version
Order No.	<a href="#">1787230000</a>	HDC enclosures, Size: 4, Protection degree: IP65 (in plugged condition), Cable entry from side, Plug housing, Side-locking clamp on lower side, high, Size of cable entries: M 32
GTIN (EAN)	4032248204571	
Qty.	1 pc(s).	
Type	HDC 10B TSBU 1M25G	Version
Order No.	<a href="#">1787550000</a>	HDC enclosures, Size: 4, Protection degree: IP65 (in plugged condition), Cable entry from side, Plug housing, Side-locking clamp on lower side, Standard, Size of cable entries: M 25
GTIN (EAN)	4032248204892	
Qty.	1 pc(s).	
Type	HDC 10B TSBU 1PG16G	Version
Order No.	<a href="#">1654070000</a>	HDC enclosures, Size: 4, Protection degree: IP65 (in plugged condition), Cable entry from side, Plug housing, Side-locking clamp on lower side, Standard, Size of cable entries: PG 16
GTIN (EAN)	4008190406899	
Qty.	1 pc(s).	
Type	HDC 24D TSBU 1PG21G	Version
Order No.	<a href="#">1654150000</a>	HDC enclosures, Size: 4, Protection degree: IP65 (in plugged condition), Cable entry from side, Plug housing, Side-locking clamp on lower side, high, Size of cable entries: PG 21
GTIN (EAN)	4008190406974	
Qty.	1 pc(s).	
Type	HDC 24D TSBU 1M25G	Version
Order No.	<a href="#">1787240000</a>	HDC enclosures, Size: 4, Protection degree: IP65 (in plugged condition), Cable entry from side, Plug housing, Side-locking clamp on lower side, high, Size of cable entries: M 25
GTIN (EAN)	4032248204588	
Qty.	1 pc(s).	

## HDC 10B DMDQ 2QB

Weidmüller Interface GmbH &amp; Co. KG

Klingenbergstraße 26

D-32758 Detmold

Germany

www.weidmueller.com

## Accessories

## Hood, Cable Entry at top



The special die-cast alloy and the multi-layered surface sealing provide complete protection for the HDC housings.

The cleverly designed interlock system is manufactured from stainless steel. This guarantees a long lifespan with high resistance to corrosion and impact.

The housing interlock system provides integrated safety. Our unique, patented spring system provides the housing interlock with a secure grip and prevents accidental opening.

The laser marking allows for easy and quick identification. Each housing is permanently labelled with a laser marking so that each product can be quickly designated and positioned.

Weidmüller RockStar® IP 65 / NEMA Type 4X housings - your first choice for industrial housings with IP 65 protection.

## General ordering data

Type	HDC 10B TOBU 1M20G	Version
Order No.	<a href="#">1787600000</a>	HDC enclosures, Size: 4, Protection degree: IP65 (in plugged condition), Cable entry from top, Plug housing, Side-locking clamp on lower side, Standard, Size of cable entries: M 20
GTIN (EAN)	4032248204946	
Qty.	1 pc(s).	
Type	HDC 10B TOBU 1PG21G	Version
Order No.	<a href="#">1654240000</a>	HDC enclosures, Size: 4, Protection degree: IP65 (in plugged condition), Cable entry from top, Plug housing, Side-locking clamp on lower side, Standard, Size of cable entries: PG 21
GTIN (EAN)	4008190407063	
Qty.	1 pc(s).	
Type	HDC 24D TOBU 2M20G	Version
Order No.	<a href="#">1336600000</a>	HDC enclosures, Size: 4, Protection degree: IP65, IP65 (in plugged condition), Cable entry from top, Plug housing, Side-locking clamp on lower side, high, Size of cable entries: M 20
GTIN (EAN)	4050118175257	
Qty.	1 pc(s).	
Type	HDC 24D TOBU 1M25G	Version
Order No.	<a href="#">1787300000</a>	HDC enclosures, Size: 4, Protection degree: IP65 (in plugged condition), Cable entry from top, Plug housing, Side-locking clamp on lower side, high, Size of cable entries: M 25
GTIN (EAN)	4032248204649	
Qty.	1 pc(s).	
Type	HDC 24D TOBU 1PG29G	Version
Order No.	<a href="#">1654320000</a>	HDC enclosures, Size: 4, Protection degree: IP65 (in plugged condition), Cable entry from top, Plug housing, Side-locking clamp on lower side, high, Size of cable entries: PG 29
GTIN (EAN)	4008190407148	
Qty.	1 pc(s).	
Type	HDC 10B TOBU 1M25G	Version
Order No.	<a href="#">1787590000</a>	HDC enclosures, Size: 4, Protection degree: IP65 (in plugged condition), Cable entry from top, Plug housing, Side-locking clamp on lower side, Standard, Size of cable entries: M 25
GTIN (EAN)	4032248204939	
Qty.	1 pc(s).	
Type	HDC 10B TOBU 1PG16G	Version
Order No.	<a href="#">1654220000</a>	HDC enclosures, Size: 4, Protection degree: IP65 (in plugged condition), Cable entry from top, Plug housing, Side-locking clamp on lower side, Standard, Size of cable entries: PG 16
GTIN (EAN)	4008190407049	
Qty.	1 pc(s).	
Type	HDC 24D TOBU 1M32G	Version
Order No.	<a href="#">1787290000</a>	HDC enclosures, Size: 4, Protection degree: IP65 (in plugged condition), Cable entry from top, Plug housing, Side-locking clamp on lower side, high, Size of cable entries: M 32
GTIN (EAN)	4032248204632	
Qty.	1 pc(s).	