

HDC 16A ALU**Weidmüller Interface GmbH & Co. KG**

Klingenbergstraße 26

D-32758 Detmold

Germany

www.weidmueller.com

The special die-cast alloy and the multi-layered surface sealing provide complete protection for the HDC housings.

The cleverly designed interlock system is manufactured from stainless steel. This guarantees a long lifespan with high resistance to corrosion and impact.

The housing interlock system provides integrated safety. Our unique, patented spring system provides the housing interlock with a secure grip and prevents accidental opening.

The laser marking allows for easy and quick identification. Each housing is permanently labelled with a laser marking so that each product can be quickly designated and positioned.

Weidmüller RockStar® IP 65 / NEMA Type 4X housings - your first choice for industrial housings with IP 65 protection.

General ordering data

Version	HDC enclosures, Size: 5, Protection degree: IP65 (in plugged condition), Bulkhead housing, End-locking clamp, lower side, Standard
Order No.	1664920000
Type	HDC 16A ALU
GTIN (EAN)	4008190421625
Qty.	1 pc(s).

HDC 16A ALU

Weidmüller Interface GmbH & Co. KG

Klingenbergstraße 26

D-32758 Detmold

Germany

www.weidmueller.com

Technical data

Dimensions and weights

Depth	98 mm	Depth (inches)	3.858 inch
Height	25 mm	Height (inches)	0.984 inch
Width	54.2 mm	Width (inches)	2.134 inch
Mounting dimension - height	18 mm	Mounting dimension - width	86 mm
Net weight	97 g		

Temperatures

Limit temperature	-40 °C ... 125 °C
-------------------	-------------------

Dimensions

Height of base B1	5 mm	Height of housing B	26 mm
Hole pitch length A2	86 mm	Total length housing	79 mm
Width base C1	33 mm	Width housing C	30 mm

General data

EMC housings	No	Housing main material	diecast aluminium
Material of locking element	Stainless steel, rust-proof	Protection degree	IP65 (in plugged condition)
Surface finish	Powder coating	Tightening torque	0.5 Nm

Version

BG	5	Clamp version	End-locking clamp
Colour (RAL)	RAL 7035	Cover	without cover
Design	Standard	Design of housing	Bulkhead housing
Design of locking system	End-locking clamp, lower side	Sealing	NBR
Size	5	Suitable for ModuPlug®	No
Tightening torque	0.5 Nm	Top part/bottom part/lid	lower part
Type	Bulkhead (feed-through)		

Classifications

ETIM 6.0	EC000437	ETIM 7.0	EC000437
ETIM 8.0	EC000437	ETIM 9.0	EC000437
ECLASS 9.0	27-44-02-02	ECLASS 9.1	27-44-02-02
ECLASS 10.0	27-44-02-02	ECLASS 11.0	27-44-02-02
ECLASS 12.0	27-44-02-02	ECLASS 13.0	27-44-02-02

Substance	Acetone
Chemical resistance	Conditionally resistant
Substance	Drilling oil
Chemical resistance	Resistant
Substance	Diesel
Chemical resistance	Resistant
Substance	Ethyl alcohol
Chemical resistance	Resistant
Substance	Transmission oil

HDC 16A ALU

Weidmüller Interface GmbH & Co. KG

Klingenbergstraße 26

D-32758 Detmold

Germany

www.weidmueller.com

Technical data

Chemical resistance	Resistant
Substance	Hydraulic oil
Chemical resistance	Resistant
Substance	Coolant
Chemical resistance	Resistant
Substance	Petroleum benzine
Chemical resistance	Resistant
Substance	Sweat
Chemical resistance	Resistant
Substance	Premium gasoline
Chemical resistance	Conditionally resistant
Substance	Water
Chemical resistance	Resistant
Substance	UV
Chemical resistance	Unstable
Substance	Ozone
Chemical resistance	Unstable

Environmental Product Compliance

REACH SVHC	Lead 7439-92-1 Potassium perfluorobutane sulfonate 29420-49-3
SCIP	e98b2b24-ba23-41bf-8d19-0dda3647412f
Chemical resistance	de.myview.objectmodel.impl.BlockImpl@133f473c de.myview.objectmodel.impl.BlockImpl@209b88c9 de.myview.objectmodel.impl.BlockImpl@16281fd2 de.myview.objectmodel.impl.BlockImpl@48dd194f de.myview.objectmodel.impl.BlockImpl@2132b1cf de.myview.objectmodel.impl.BlockImpl@5d13b8e0 de.myview.objectmodel.impl.BlockImpl@b93ea1f de.myview.objectmodel.impl.BlockImpl@2b249d43 de.myview.objectmodel.impl.BlockImpl@1facfd21 de.myview.objectmodel.impl.BlockImpl@5fb8828c de.myview.objectmodel.impl.BlockImpl@4bef5876 de.myview.objectmodel.impl.BlockImpl@44ae0acd de.myview.objectmodel.impl.BlockImpl@3c13b28c

Important note

Product information	When mounting the housings, make sure that the flat gasket is correctly seated.
---------------------	---

Approvals

Approvals



ROHS	Conform
UL File Number Search	UL Website
Certificate No. (cURus)	E92202

HDC 16A ALU

Weidmüller Interface GmbH & Co. KG
Klingenbergstraße 26
D-32758 Detmold
Germany

www.weidmueller.com

Technical data

Downloads

Approval/Certificate/Document of Con-
formity

[Manufacturer's declaration](#)

Engineering Data

[CAD data – STEP](#)

Engineering Data

[Zuken E3.S](#)

Product Change Notification

[20220214 Technical change to HDC housings](#)
[20220214 Technische Änderung bei HDC-Gehäusen](#)

Technical Documentation

[1664920000_HDC_16A_ALU_STP_Blatt__1.pdf](#)

Catalogues

[Catalogues in PDF-format](#)

Brochures

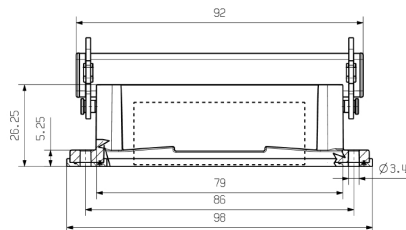
[FL FIELDWIRING EN](#)
[FL FIELDWIRING EN](#)

HDC 16A ALU

Weidmüller Interface GmbH & Co. KG
Klingenbergstraße 26
D-32758 Detmold
Germany

www.weidmueller.com

Drawings



HDC 16A ALU**Weidmüller Interface GmbH & Co. KG**

Klingenbergstraße 26

D-32758 Detmold

Germany

www.weidmueller.com**Accessories****Cover**

The special die-cast alloy and the multi-layered surface sealing provide complete protection for the HDC housings.

The cleverly designed interlock system is manufactured from stainless steel. This guarantees a long lifespan with high resistance to corrosion and impact.

The housing interlock system provides integrated safety. Our unique, patented spring system provides the housing interlock with a secure grip and prevents accidental opening.

The laser marking allows for easy and quick identification. Each housing is permanently labelled with a laser marking so that each product can be quickly designated and positioned.

Weidmüller RockStar® IP 65 / NEMA Type 4X housings - your first choice for industrial housings with IP 65 protection.

General ordering data

Type	HDC 16A DMDL 2BO	Version
Order No.	1665910000	HDC enclosures, Size: 5, Protection degree: IP65 (in plugged condition), Cover for upper part of housing, End-locking clamp, lower side, Standard
GTIN (EAN)	4008190422943	
Qty.	1 pc(s).	