

**HDC 06B SLU 2PG16G****Weidmüller Interface GmbH & Co. KG**

Klingenbergstraße 26

D-32758 Detmold

Germany

[www.weidmueller.com](http://www.weidmueller.com)

The special die-cast alloy and the multi-layered surface sealing provide complete protection for the HDC housings.

The cleverly designed interlock system is manufactured from stainless steel. This guarantees a long lifespan with high resistance to corrosion and impact.

The housing interlock system provides integrated safety. Our unique, patented spring system provides the housing interlock with a secure grip and prevents accidental opening.

The laser marking allows for easy and quick identification. Each housing is permanently labelled with a laser marking so that each product can be quickly designated and positioned.

Weidmüller RockStar® IP 65 / NEMA Type 4X housings - your first choice for industrial housings with IP 65 protection.

**General ordering data**

Version	HDC enclosures, Size: 3, Protection degree: IP65 (in plugged condition), Base housing, End-locking clamp, lower side, Standard, without cover, Size of cable entries: PG 16
Order No.	<a href="#">1652760000</a>
Type	HDC 06B SLU 2PG16G
GTIN (EAN)	4008190402839
Qty.	1 pc(s).

## HDC 06B SLU 2PG16G

Weidmüller Interface GmbH &amp; Co. KG

Klingenbergstraße 26

D-32758 Detmold

Germany

www.weidmueller.com

## Technical data

## Dimensions and weights

Height	54 mm	Height (inches)	2.126 inch
Width	71.7 mm	Width (inches)	2.823 inch
Mounting dimension - height	40 mm	Mounting dimension - width	70 mm
Net weight	217 g		

## Temperatures

Limit temperature	-40 °C ... 125 °C
-------------------	-------------------

## Dimensions

Cable entry	w. thread	Height of base B1	5 mm
Height of housing B	54 mm	Hole pitch length A2	70 mm
Total length housing	60 mm	Width base C1	54.5 mm
Width housing C	43 mm		

## General data

EMC housings	No	Housing main material	diecast aluminium
Material of locking element	Stainless steel, rust-proof	Protection degree	IP65 (in plugged condition)
Surface finish	Powder coating	Tightening torque	1.2 Nm

## Version

BG	3	Cable entry	w. thread
Clamp version	End-locking clamp	Colour (RAL)	RAL 7035
Design	Standard	Design of cover	without cover
Design of housing	Base housing	Design of locking system	End-locking clamp, lower side
Internal thread	PG 16	Number of cable entry on top	0
Number of cable entry sideways	2	Sealing	NBR
Size	3	Size of cable entries	PG 16
Suitable for ModuPlug®	No	Tightening torque	1.2 Nm
Top part/bottom part/lid	lower part	Type	Base housing

## Classifications

ETIM 6.0	EC000437	ETIM 7.0	EC000437
ETIM 8.0	EC000437	ETIM 9.0	EC000437
ECLASS 9.0	27-44-02-02	ECLASS 9.1	27-44-02-02
ECLASS 10.0	27-44-02-02	ECLASS 11.0	27-44-02-02
ECLASS 12.0	27-44-02-02	ECLASS 13.0	27-44-02-02

Substance	Acetone
Chemical resistance	Conditionally resistant
Substance	Drilling oil
Chemical resistance	Resistant
Substance	Diesel
Chemical resistance	Resistant
Substance	Ethyl alcohol
Chemical resistance	Resistant

Creation date April 27, 2024 2:42:34 PM CEST

**HDC 06B SLU 2PG16G****Weidmüller Interface GmbH & Co. KG**

Klingenbergstraße 26

D-32758 Detmold

Germany

[www.weidmueller.com](http://www.weidmueller.com)**Technical data**

Substance	Transmission oil
Chemical resistance	Resistant
Substance	Hydraulic oil
Chemical resistance	Resistant
Substance	Coolant
Chemical resistance	Resistant
Substance	Petroleum benzine
Chemical resistance	Resistant
Substance	Sweat
Chemical resistance	Resistant
Substance	Premium gasoline
Chemical resistance	Conditionally resistant
Substance	Water
Chemical resistance	Resistant
Substance	UV
Chemical resistance	Unstable
Substance	Ozone
Chemical resistance	Unstable

**Environmental Product Compliance**

REACH SVHC	Lead 7439-92-1 Potassium perfluorobutane sulfonate 29420-49-3
SCIP	e98b2b24-ba23-41bf-8d19-Odda3647412f
Chemical resistance	de.myview.objectmodel.impl.BlockImpl@607024a4 de.myview.objectmodel.impl.BlockImpl@1636b80a de.myview.objectmodel.impl.BlockImpl@604977b2 de.myview.objectmodel.impl.BlockImpl@5db08e77 de.myview.objectmodel.impl.BlockImpl@3c84d461 de.myview.objectmodel.impl.BlockImpl@1fd1cd13 de.myview.objectmodel.impl.BlockImpl@340ecd8c de.myview.objectmodel.impl.BlockImpl@6d142e7c de.myview.objectmodel.impl.BlockImpl@7729d863 de.myview.objectmodel.impl.BlockImpl@66813ac0 de.myview.objectmodel.impl.BlockImpl@24207881 de.myview.objectmodel.impl.BlockImpl@688bc5b7 de.myview.objectmodel.impl.BlockImpl@5158e205

**Approvals**

Approvals



ROHS	Conform
UL File Number Search	UL Website
Certificate No. (cULus)	E92202

## HDC 06B SLU 2PG16G

**Weidmüller Interface GmbH & Co. KG**

Klingenbergstraße 26

D-32758 Detmold

Germany

[www.weidmueller.com](http://www.weidmueller.com)

## Technical data

### Downloads

Approval/Certificate/Document of Con-  
formity

[Manufacturer's declaration](#)

Engineering Data

[CAD data – STEP](#)

Product Change Notification

[20220214 Technical change to HDC housings](#)

[20220214 Technische Änderung bei HDC-Gehäusen](#)

Technical Documentation

[1652760000 HDC\\_06B\\_SLU\\_2PG16G\\_STP\\_Blatt\\_1.pdf](#)

Catalogues

[Catalogues in PDF-format](#)

Brochures

[FL FIELDWIRING EN](#)

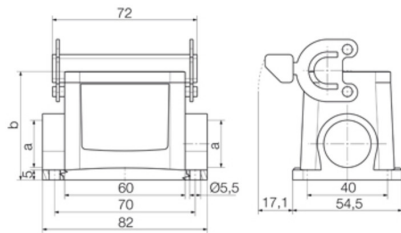
[FL FIELDWIRING EN](#)

## HDC 06B SLU 2PG16G

**Weidmüller Interface GmbH & Co. KG**  
Klingenbergstraße 26  
D-32758 Detmold  
Germany

[www.weidmueller.com](http://www.weidmueller.com)

## Drawings



**HDC 06B SLU 2PG16G****Weidmüller Interface GmbH & Co. KG**

Klingenbergstraße 26

D-32758 Detmold

Germany

[www.weidmueller.com](http://www.weidmueller.com)**Accessories****Cover**

The special die-cast alloy and the multi-layered surface sealing provide complete protection for the HDC housings.

The cleverly designed interlock system is manufactured from stainless steel. This guarantees a long lifespan with high resistance to corrosion and impact.

The housing interlock system provides integrated safety. Our unique, patented spring system provides the housing interlock with a secure grip and prevents accidental opening.

The laser marking allows for easy and quick identification. Each housing is permanently labelled with a laser marking so that each product can be quickly designated and positioned.

Weidmüller RockStar® IP 65 / NEMA Type 4X housings - your first choice for industrial housings with IP 65 protection.

**General ordering data**

Type	HDC 06B DODL 2BO	Version
Order No.	<a href="#">1665200000</a>	HDC enclosures, Size: 3, Protection degree: IP65 (in plugged
GTIN (EAN)	4008190421908	condition), Cover for lower part of housing, End-locking clamp, lower
Qty.	1 pc(s).	side, Standard