

**VPN/-240****Weidmüller Interface GmbH & Co. KG**

Klingenbergstraße 26

D-32758 Detmold

Germany

[www.weidmueller.com](http://www.weidmueller.com)

**The use of insulated connectors guarantees users consistent electrical connection quality in the long term.**

- Wide range of insulated and non-insulated cable lugs and connectors
- Tubular cable lugs according to current market standards (Euroseries)
- Compression cable lugs acc. to DIN 46235
- Sheet metal cable lugs acc. to DIN 46234
- Insulated ring cable lugs to DIN 46237
- Insulated pin cable lugs to DIN 46231

**General ordering data**

Version	cable lug, terminal end, 240 mm <sup>2</sup> , 240 mm <sup>2</sup>
Order No.	<a href="#">1498730000</a>
Type	VPN/-240
GTIN (EAN)	4050118308044
Qty.	10 pc(s).

**VPN/-240****Weidmüller Interface GmbH & Co. KG**

Klingenbergstraße 26

D-32758 Detmold

Germany

[www.weidmueller.com](http://www.weidmueller.com)**Technical data****Dimensions and weights**

Net weight	232 g
------------	-------

**Connectors**

Conductor cross-section	240 mm <sup>2</sup>	Conductor cross-section, max.	240 mm <sup>2</sup>
Connection length (l)	90 mm	Identification number Cu	28 K
Inside diameter of shaft (d1)	21.5 mm	Insulation	not available
Length 2 (l2)	7 mm	Outside diameter of shaft (d3)	29 mm

**Classifications**

ETIM 6.0	EC001059	ETIM 7.0	EC001059
ETIM 8.0	EC001059	ETIM 9.0	EC001059
ECLASS 9.0	27-40-02-12	ECLASS 9.1	27-40-02-12
ECLASS 10.0	27-40-02-12	ECLASS 11.0	27-40-02-12
ECLASS 12.0	27-40-02-12	ECLASS 13.0	27-40-02-12

**Approvals**

ROHS	Conform
------	---------

**Downloads**

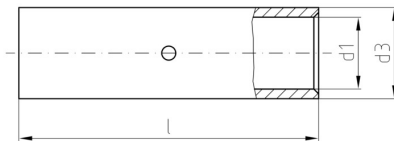
Catalogues	<a href="#">Catalogues in PDF-format</a>
Brochures	

## VPN/-240

**Weidmüller Interface GmbH & Co. KG**  
Klingenbergstraße 26  
D-32758 Detmold  
Germany

[www.weidmueller.com](http://www.weidmueller.com)

## Drawings



## VPN/-240

Weidmüller Interface GmbH &amp; Co. KG

Klingenbergstraße 26

D-32758 Detmold

Germany

www.weidmueller.com

## Accessories

## Tools

**Crimping tools for cable lugs, connectors and wire-end ferrules with interchangeable inserts**

- extremely fast processing thanks to hydraulic support
- large processing range up to 400 mm<sup>2</sup>
- 360° revolving quick action crimping head
- automatic pressure limitation and monitoring via pressure sensor
- Additional features for APG series:
- electronic control and monitoring of the crimping process
- Saving of all crimping cycles and error messages to internal memory
- Reading of all cycles and error messages via USB

**General ordering data**

Type	APG 80	Version
Order No.	<a href="#">1502390000</a>	6mm <sup>2</sup> , 400mm <sup>2</sup>
GTIN (EAN)	4050118310627	
Qty.	1 pc(s).	

**... for compression cable lugs (acc. to DIN 46235)****Crimping tools for cable lugs, connectors and wire-end ferrules with interchangeable inserts**

- extremely fast processing thanks to hydraulic support
- large processing range up to 400 mm<sup>2</sup>
- 360° revolving quick action crimping head
- automatic pressure limitation and monitoring via pressure sensor
- Additional features for APG series:
- electronic control and monitoring of the crimping process
- Saving of all crimping cycles and error messages to internal memory
- Reading of all cycles and error messages via USB

**General ordering data**

Type	ES APG 80 HEX 240	Version
Order No.	<a href="#">1502740000</a>	Hexagonal crimp
GTIN (EAN)	4050118310481	
Qty.	1 pc(s).	

**VPN/-240****Weidmüller Interface GmbH & Co. KG**

Klingenbergstraße 26

D-32758 Detmold

Germany

[www.weidmueller.com](http://www.weidmueller.com)**Accessories****... for tubular cable lugs (acc. to EN 13600)****Crimping tools for cable lugs, connectors and wire-end ferrules with interchangeable inserts**

- extremely fast processing thanks to hydraulic support
- large processing range up to 400 mm<sup>2</sup>
- 360° revolving quick action crimping head
- automatic pressure limitation and monitoring via pressure sensor
- Additional features for APG series:
- electronic control and monitoring of the crimping process
- Saving of all crimping cycles and error messages to internal memory
- Reading of all cycles and error messages via USB

**General ordering data**

Type	ES APG 80 WM 240	Version
Order No.	<a href="#">1502580000</a>	240mm <sup>2</sup> , WM crimp
GTIN (EAN)	4050118310689	
Qty.	1 pc(s).	