

**KRN-M20/-70****Weidmüller Interface GmbH & Co. KG**

Klingenbergstraße 26

D-32758 Detmold

Germany

[www.weidmueller.com](http://www.weidmueller.com)

**The use of insulated connectors guarantees users consistent electrical connection quality in the long term.**

- Wide range of insulated and non-insulated cable lugs and connectors
- Tubular cable lugs according to current market standards (Euroseries)
- Compression cable lugs acc. to DIN 46235
- Sheet metal cable lugs acc. to DIN 46234
- Insulated ring cable lugs to DIN 46237
- Insulated pin cable lugs to DIN 46231

**General ordering data**

Version	cable lug, terminal end, 70 mm <sup>2</sup>
Order No.	<a href="#">1495590000</a>
Type	KRN-M20/-70
GTIN (EAN)	4050118305302
Qty.	25 pc(s).

**KRN-M20/-70****Weidmüller Interface GmbH & Co. KG**

Klingenbergstraße 26

D-32758 Detmold

Germany

[www.weidmueller.com](http://www.weidmueller.com)**Technical data****Dimensions and weights**

Net weight	52.52 g
------------	---------

**Technical data**

Version	Euro series, standard
---------	-----------------------

**Connectors**

Conductor cross-section	70 mm <sup>2</sup>	Connection length (l)	52 mm
Flange width (b)	29 mm	Hole	M 20
Inside diameter of flange (d2)	21 mm	Inside diameter of shaft (d1)	12 mm
Insulation	not available	Outside diameter of shaft (d3)	16.5 mm
Shaft length (a)	21 mm		

**Classifications**

ETIM 6.0	EC001051	ETIM 7.0	EC001051
ETIM 8.0	EC001051	ETIM 9.0	EC001051
ECLASS 9.0	27-40-02-05	ECLASS 9.1	27-40-02-05
ECLASS 10.0	27-40-02-05	ECLASS 11.0	27-40-02-05
ECLASS 12.0	27-40-02-05	ECLASS 13.0	27-40-02-05

**Approvals**

ROHS	Conform
------	---------

**Downloads**

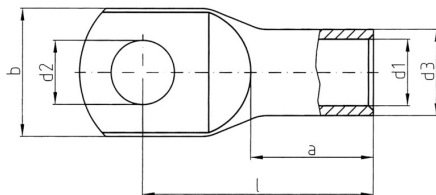
Engineering Data	<a href="#">CAD data – STEP</a>
Catalogues	<a href="#">Catalogues in PDF-format</a>
Brochures	

## KRN-M20/-70

**Weidmüller Interface GmbH & Co. KG**  
Klingenbergstraße 26  
D-32758 Detmold  
Germany

[www.weidmueller.com](http://www.weidmueller.com)

## Drawings



## KRN-M20/-70

Weidmüller Interface GmbH &amp; Co. KG

Klingenbergstraße 26

D-32758 Detmold

Germany

www.weidmueller.com

## Accessories

## ... for tubular cable lugs

**Crimping tools for cable lugs, connectors and wire-end ferrules with interchangeable inserts**

- extremely fast processing thanks to hydraulic support
- large processing range up to 300 mm<sup>2</sup>
- 270° revolving quick-action crimping head
- automatic pressure limitation and monitoring via pressure sensor
- electronic control and monitoring of the crimping process
- Saving of all crimping cycles and error messages to internal memory
- Reading of all cycles and error messages via USB
- Li-ion rechargeable battery with charge status indicator: 18 V, 2 Ah

**General ordering data**

Type	ES EPG/HPG 60 WM 70	Version
Order No.	<a href="#">2469590000</a>	Crimping tool insert, WM crimp
GTIN (EAN)	4050118483857	
Qty.	1 pc(s).	

## ... for compression cable lugs (acc. to DIN 46235)

**Crimping tools for cable lugs, connectors and wire-end ferrules with interchangeable inserts**

- extremely fast processing thanks to hydraulic support
- large processing range up to 300 mm<sup>2</sup>
- 270° revolving quick-action crimping head
- automatic pressure limitation and monitoring via pressure sensor
- electronic control and monitoring of the crimping process
- Saving of all crimping cycles and error messages to internal memory
- Reading of all cycles and error messages via USB
- Li-ion rechargeable battery with charge status indicator: 18 V, 2 Ah

**General ordering data**

Type	ES EPG 45 HEX 10/70	Version
Order No.	<a href="#">1500940000</a>	Hexagonal crimp
GTIN (EAN)	4050118309522	
Qty.	1 pc(s).	

## KRN-M20/-70

**Weidmüller Interface GmbH & Co. KG**

Klingenbergstraße 26

D-32758 Detmold

Germany

[www.weidmueller.com](http://www.weidmueller.com)

## Accessories

### ... for tubular cable lugs (acc. to EN 13600)



#### Crimping tools for cable lugs, connectors and wire-end ferrules with interchangeable inserts

- extremely fast processing thanks to hydraulic support
- large processing range up to 400 mm<sup>2</sup>
- 360° revolving quick action crimping head
- automatic pressure limitation and monitoring via pressure sensor
- Additional features for APG series:
- electronic control and monitoring of the crimping process
- Saving of all crimping cycles and error messages to internal memory
- Reading of all cycles and error messages via USB

#### General ordering data

Type	ES APG 80 WM 70	Version
Order No.	<a href="#">1502520000</a>	70mm <sup>2</sup> , WM crimp
GTIN (EAN)	4050118310580	
Qty.	1 pc(s).	

### Tools



#### Crimping tools for cable lugs, connectors and wire-end ferrules with interchangeable inserts

- extremely fast processing thanks to hydraulic support
- large processing range up to 400 mm<sup>2</sup>
- 360° revolving quick action crimping head
- automatic pressure limitation and monitoring via pressure sensor
- Additional features for APG series:
- electronic control and monitoring of the crimping process
- Saving of all crimping cycles and error messages to internal memory
- Reading of all cycles and error messages via USB

#### General ordering data

Type	APG 80	Version
Order No.	<a href="#">1502390000</a>	6mm <sup>2</sup> , 400mm <sup>2</sup>
GTIN (EAN)	4050118310627	
Qty.	1 pc(s).	
Type	HPG 60	Version
Order No.	<a href="#">2453820000</a>	6mm <sup>2</sup> , 300mm <sup>2</sup> , Hexagonal crimp, WM crimp, Indent crimp,
GTIN (EAN)	4050118468427	Trapezoidal crimp, Oval crimping
Qty.	1 pc(s).	

## KRN-M20/-70

Weidmüller Interface GmbH &amp; Co. KG

Klingenbergstraße 26

D-32758 Detmold

Germany

www.weidmueller.com

## Accessories

## ... for compression cable lugs (acc. to DIN 46235)

**Crimping tools for cable lugs, connectors and wire-end ferrules with interchangeable inserts**

- extremely fast processing thanks to hydraulic support
- large processing range up to 400 mm<sup>2</sup>
- 360° revolving quick action crimping head
- automatic pressure limitation and monitoring via pressure sensor
- Additional features for APG series:
- electronic control and monitoring of the crimping process
- Saving of all crimping cycles and error messages to internal memory
- Reading of all cycles and error messages via USB

**General ordering data**

Type	ES APG 80 HEX 70	Version
Order No.	<a href="#">1502680000</a>	Hexagonal crimp
GTIN (EAN)	4050118310641	
Qty.	1 pc(s).	

**Crimping tool for tubular (EN 13600) and compression cable lugs (DIN 46235)****Crimping tools for tubular and compression cable lugs with swivel crimping star.**

- Integrated crimping star for different cross-sections
- Hexagon crimping tools for compression cable lugs
- WM-From crimping tools for tubular cable lugs
- wide processing range up to 70 or 120 mm<sup>2</sup>

**General ordering data**

Type	PZ RK 10/120	Version
Order No.	<a href="#">1500450000</a>	10mm <sup>2</sup> , 120mm <sup>2</sup>
GTIN (EAN)	4050118309065	
Qty.	1 pc(s).	

Type	PZ RK 6/70	Version
Order No.	<a href="#">1500440000</a>	6mm <sup>2</sup> , 70mm <sup>2</sup>
GTIN (EAN)	4050118309058	
Qty.	1 pc(s).	

## KRN-M20/-70

Weidmüller Interface GmbH &amp; Co. KG

Klingenbergstraße 26

D-32758 Detmold

Germany

www.weidmueller.com

## Accessories

## Tools

**Crimping tools for cable lugs, connectors and wire-end ferrules with interchangeable inserts**

- extremely fast processing thanks to hydraulic support
- large processing range up to 300 mm<sup>2</sup>
- 270° revolving quick-action crimping head
- automatic pressure limitation and monitoring via pressure sensor
- electronic control and monitoring of the crimping process
- Saving of all crimping cycles and error messages to internal memory
- Reading of all cycles and error messages via USB
- Li-ion rechargeable battery with charge status indicator: 18 V, 2 Ah

**General ordering data**

Type	EPG 60	Version
Order No.	<a href="#">2453810000</a>	Pressing tools, Tools, Pressing tool, 6mm <sup>2</sup> , 300mm <sup>2</sup> , Hexagonal crimp,
GTIN (EAN)	4050118468434	WM crimp, Indent crimp, Trapezoidal crimp, Oval crimping
Qty.	1 pc(s).	
Type	EPG 45	Version
Order No.	<a href="#">1500830000</a>	Pressing tool, 6mm <sup>2</sup> , 150mm <sup>2</sup> , Hexagonal crimp, WM crimp, Indent
GTIN (EAN)	4050118309317	crimp, Trapezoidal crimp, Oval crimping
Qty.	1 pc(s).	

**... for compression cable lugs****Crimping tools for cable lugs, connectors and wire-end ferrules with interchangeable inserts**

- extremely fast processing thanks to hydraulic support
- large processing range up to 300 mm<sup>2</sup>
- 270° revolving quick-action crimping head
- automatic pressure limitation and monitoring via pressure sensor
- electronic control and monitoring of the crimping process
- Saving of all crimping cycles and error messages to internal memory
- Reading of all cycles and error messages via USB
- Li-ion rechargeable battery with charge status indicator: 18 V, 2 Ah

**General ordering data**

Type	ES EPG/HPG 60 HEX 70	Version
Order No.	<a href="#">2505210000</a>	Crimping tool insert, Hexagonal crimp
GTIN (EAN)	4050118519594	
Qty.	1 pc(s).	

**KRN-M20/-70****Weidmüller Interface GmbH & Co. KG**

Klingenbergstraße 26

D-32758 Detmold

Germany

[www.weidmueller.com](http://www.weidmueller.com)**Accessories****... for tubular cable lugs (acc. to EN 13600)****Crimping tools for cable lugs, connectors and wire-end ferrules with interchangeable inserts**

- extremely fast processing thanks to hydraulic support
- large processing range up to 300 mm<sup>2</sup>
- 270° revolving quick-action crimping head
- automatic pressure limitation and monitoring via pressure sensor
- electronic control and monitoring of the crimping process
- Saving of all crimping cycles and error messages to internal memory
- Reading of all cycles and error messages via USB
- Li-ion rechargeable battery with charge status indicator: 18 V, 2 Ah

**General ordering data**

Type	ES EPG 45 WM 10/70	Version
Order No.	<a href="#">1500870000</a>	WM crimp
GTIN (EAN)	4050118309256	
Qty.	1 pc(s).	