

IE-SR-2GT-LAN-FN**Weidmüller Interface GmbH & Co. KG**

Klingenbergstraße 26

D-32758 Detmold

Germany

www.weidmueller.com**Product image****Weidmüller Industrial Security Routers**

- Secure networks
 - Stateful packet inspection Firewall
 - IP/Port- forwarding
 - Network segmentation
- Easy integration of machine networks into manufacturing networks through 1: 1 NAT
- Secure and easy remote maintenance with Weidmüller u-link remote access service
- Enable modular and future proof network architectures with static and dynamic routing
- Secure communication over the Internet by using IPsec and OpenVPN
- Reliable internet connection, even without on-site internet access, thanks to integrated 4G/LTE cellular modem
- Full flexibility thanks to Fast Ethernet and Gigabit Ethernet interfaces ranging from 2 up to 4 ports.

General ordering data

| | |
|---------------------|---|
| Version | Security/NAT Router, Gigabit Ethernet, 2x RJ45 10/100/1000BaseT(X), IP20, -20 °C...70 |
| Order No. | 1489940000 |
| Type | IE-SR-2GT-LAN-FN |
| GTIN (EAN) | 4050118299533 |
| Qty. | 1 pc(s). |
| Delivery status | This article will no longer be available in the future. |
| Available until | 2022-10-31 |
| Replacement parts | 1347870000 1347850000 |
| Alternative product | 2873910000 |

IE-SR-2GT-LAN-FN

Weidmüller Interface GmbH & Co. KG

Klingenbergstraße 26

D-32758 Detmold

Germany

www.weidmueller.com

Technical data

Dimensions and weights

| | | | |
|------------|--------|-----------------|------------|
| Depth | 140 mm | Depth (inches) | 5.512 inch |
| Height | 170 mm | Height (inches) | 6.693 inch |
| Width | 35 mm | Width (inches) | 1.378 inch |
| Net weight | 700 g | | |

Temperatures

| | | | |
|---------------------|---------------------------|-----------------------|-------------|
| Storage temperature | -20 °C...85 °C | Operating temperature | -20 °C...70 |
| Humidity | 5 - 90 %, no condensation | | |

Network Services/Firewall/Management

| | | | |
|------------------|---|------------|---|
| Firewall | IPv4 Stateful Packet Inspection Firewall (incoming/outgoing), NAT masquerading, 1:1 NAT, Port forwarding, layer 2/3 filter (VLAN ID, VLAN QoS Tag, MAC address, EtherType frame), Auto-learning function to create packet filter rules (analysis of network traffic), Layer 2/3-based packet prioritisation (Ethernet Frame, IP Header, VLAN Tag) | Management | Configuration via WEB interface (HTTP/HTTPS), Language interface can be switched to German or English, Configuration support through detailed help information (tool tip), Configurable multi-user access with freely definable rights, Support for SNMP v1/v2/v3, event log/syslog |
| Network services | DHCP Server / DHCP Relay, DNS relay, NTP client, DynDNS (DHCP client acc. to RFC 2136) | | |

Miscellaneous

| | | | |
|-------------|--|------------|---|
| Diagnostics | Remote capture function for network diagnostics via a connected PC (Wireshark) | Modbus/TCP | Integral modbus TCP server for status queries |
| Monitoring | Client monitoring (per ICMP) with alarm function in the event of a fault | | |

Modes of operation

| | | | |
|-----------|---|--------------------|--|
| IP router | IP routing (IPv4, Layer-3) with SPI firewall (Stateful Packet Inspection) | Transparent bridge | 2-port switch with additional layer-2 filter |
|-----------|---|--------------------|--|

EMC conformity and approvals

| | | | |
|---------------|--|-----------------|----------------------------|
| EMC standards | FCC Part 15, Class A, EN 61000-6-4, EN 61000-6-2 | Safety standard | UL508 |
| Shock | according to IEC 60068-2-27 | Vibration | according to IEC 60068-2-6 |

Environmental conditions

| | |
|----------|---------------------------|
| Humidity | 5 - 90 %, no condensation |
|----------|---------------------------|

IE-SR-2GT-LAN-FN**Weidmüller Interface GmbH & Co. KG**

Klingenbergstraße 26

D-32758 Detmold

Germany

www.weidmueller.com

Technical data

| | | |
|-----------------------------|----------------|--|
| Operating altitude | Altitude, max. | 2,000 m |
| | Note | in acc. with UL |
| | Altitude, max. | 6,000 m |
| | Note | for restrictions, see the manufacturer's declaration for operating altitude in section downloads |
| Operating temperature, max. | 70 | |
| Operating temperature, min. | -20 °C | |
| Storage temperature, max. | 85 °C | |
| Storage temperature, min. | -20 °C | |

Guarantee

| | |
|---------------|---------|
| Time interval | 3 years |
|---------------|---------|

Interfaces

| | | | |
|--------------------------|--|--------------------|--|
| Digital inputs | Cut: physically disconnects (Link Down) the WAN port (24 V in) | Digital outputs | Alarm: indicates a configurable network state or fault (24 V out) |
| Function reset button | Restoration of factory settings | LED indicator | Indication of voltage status, Status, CUT, Alarm, Active VPN connection, Port LED: Link/ACT, Speed (RJ45 port) |
| Number of SCM-Card slots | 1 | Number of ports | 2x RJ45 10/100/1000BaseT(X) |
| RJ45 ports | 10/100/1000BaseT(X), auto negotiation, Full-/half-duplex mode, Auto MDI/MDI-X port | SCM-Card slot type | Smart Card (ID-000 format), Save and restore the configuration using smart card (memory chip) |
| USB port | USB 2.0 interface for firmware update or restoration of the device configuration via USB flash drive | | |

MTBF

| | | |
|------|------------------------------|-----------|
| MTBF | Operating time (hours), min. | 135,270 h |
|------|------------------------------|-----------|

Power supply

| | | |
|----------------------|---|-------|
| Current consumption | Voltage | 24 V |
| | Current | 0.6 A |
| Voltage supply | 24 V DC, 1 single input, NEC class 2, (for use in conformity with UL specifications: 7 - 30 V DC) | |
| Voltage supply range | Voltage type | DC |
| | Voltage, min. | 7 V |
| | Voltage, max. | 36 V |

Technical data

| | | | |
|-----------------------|-------------------|-------------------|-------------------|
| Housing main material | diecast aluminium | Protection degree | IP20 |
| Speed | Gigabit Ethernet | Type of mounting | DIN rail, VESA 75 |

IE-SR-2GT-LAN-FN**Weidmüller Interface GmbH & Co. KG**

Klingenbergstraße 26

D-32758 Detmold

Germany

www.weidmueller.com**Technical data****Classifications**

| | | | |
|-------------|-------------|-------------|-------------|
| ETIM 6.0 | EC001478 | ETIM 7.0 | EC001478 |
| ETIM 8.0 | EC001478 | ETIM 9.0 | EC001478 |
| ECLASS 9.0 | 19-17-01-03 | ECLASS 9.1 | 19-17-01-03 |
| ECLASS 10.0 | 19-17-04-05 | ECLASS 11.0 | 19-17-04-05 |
| ECLASS 12.0 | 19-17-04-05 | ECLASS 13.0 | 19-17-04-05 |

Environmental Product Compliance

| | |
|------------|---------------------------------------|
| REACH SVHC | Lead 7439-92-1 |
| SCIP | 9229992a-00b9-4096-8962-200a7f133e289 |

Approvals

Approvals



| | |
|-------------------------|------------|
| ROHS | Conform |
| UL File Number Search | UL Website |
| Certificate no. (cULus) | E141197 |

Downloads

| | |
|---|---|
| Approval/Certificate/Document of Conformity | EU Declaration of Conformity UK Declaration of Conformity Manufacturer's declaration for operating altitude |
| Engineering Data | CAD data – STEP |
| Product Change Notification | Firmware Release Notes |
| Software | Device description – SNMP MIB file Firmware – Current Firmware |
| User Documentation | Hardware Installation Guide Manual User Note - Secure Router Configuration |
| Catalogues | Catalogues in PDF-format |
| Brochures | |

IE-SR-2GT-LAN-FN

Weidmüller Interface GmbH & Co. KG

Klingenbergstraße 26

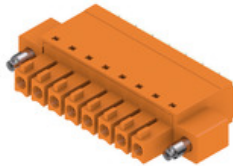
D-32758 Detmold

Germany

www.weidmueller.com

Replacement parts

BCF 3.81/180F



PUSH IN - Weidmüller's innovative connection system simplifies the wire connection process.

The benefits for users and applications:

- High packaging density due to very low component height. Simply insert the prepared wire - finished
- High component density with the compact SCDN / SCDN-THR two-tier pin header
- Simplified processing due to integrated push buttons for opening the clamping unit
- Intuitive handling – since the wire-entry area and handling area are clearly separated
- tool-free locking and releasing when using Weidmüller's patented release latch (LR)

The Weidmüller plug-in connectors, pitch 3.81 mm (0.15 inch), are compatible with the layout of customary plug-in connectors, can be coded and provide space for printing.

General ordering data

| Type | BCF 3.81/03/180F SN BK ... | Version | Product data | Packaging |
|------------|----------------------------|---|--|-----------|
| Order No. | 1347850000 | PCB plug-in connector, female plug, 3.81 mm, Number of poles: 3, | IEC: 320 V / 17.5 A / 0.14 - 1.5 mm ² | Box |
| GTIN (EAN) | 4050118152517 | 180°, PUSH IN with actuator, Clamping range, max. : 1.5 mm ² , Box | UL: 300 V / 10 A / AWG 26 - AWG 16 | |
| Qty. | 50 pc(s). | | | |
| Type | BCF 3.81/04/180F SN BK ... | Version | Product data | Packaging |
| Order No. | 1347870000 | PCB plug-in connector, female plug, 3.81 mm, Number of poles: 4, | IEC: 320 V / 17.5 A / 0.14 - 1.5 mm ² | Box |
| GTIN (EAN) | 4050118152609 | 180°, PUSH IN with actuator, Clamping range, max. : 1.5 mm ² , Box | UL: 300 V / 10 A / AWG 26 - AWG 16 | |
| Qty. | 50 pc(s). | | | |

IE-SR-2GT-LAN-FN

Weidmüller Interface GmbH & Co. KG

Klingenbergstraße 26

D-32758 Detmold

Germany

www.weidmueller.com

Accessories

Ethernet



- Suitable for Cat. 5 (up to 100 MHz) and Cat. 6 (up to 250 MHz Class E)
- Suitable for PoE+ (according to IEEE 802.3at, IEEE 802.3bt Type 3 and 4)
- Protection of all wire pairs
- Connection via RJ45 sockets
- Metal housing

General ordering data

| Type | VDATA CAT6 | Version |
|------------|----------------------------|---|
| Order No. | 1348590000 | Terminal rail fixing, Surge protection, Cat.6, PoE, 802.3 bt at Type 1, |
| GTIN (EAN) | 4050118153002 | 802.3 bt at Type 2, 802.3 bt at Type 3, 802.3 bt at Type 4 |
| Qty. | 1 pc(s). | |

Mounting kit for 19" rack assembly

- For assembling DIN rail-based devices on 19" racks



General ordering data

| Type | RM-KIT | Version |
|------------|----------------------------|---------------------------|
| Order No. | 1241440000 | Kit for 19"-rack mounting |
| GTIN (EAN) | 4050118029154 | |
| Qty. | 1 pc(s). | |