

**IE-FCI-PWB-DE****Weidmüller Interface GmbH & Co. KG**

Klingenbergstraße 26

D-32758 Detmold

Germany

[www.weidmueller.com](http://www.weidmueller.com)

FrontCom® Vario integrates multiple functions in only one single frame. The system is easy to install and you can select from a wide range of data, signal and power modules. In addition to being extremely compact, FrontCom® Vario offers a number of unique product features that will make your project planning and work activities secure, fast and future-proof. Furthermore, the FrontCom® Vario system has an attractive housing design that, by the way, offers highest impact-resistance and fully meets the requirements of IP 65 protection class.

**General ordering data**

Version	FrontCom, Insert Power large, Type F, Socket connector, DE
Order No.	<a href="#">1450730000</a>
Type	IE-FCI-PWB-DE
GTIN (EAN)	4050118255546
Qty.	1 pc(s).

## IE-FCI-PWB-DE

Weidmüller Interface GmbH &amp; Co. KG

Klingenbergstraße 26

D-32758 Detmold

Germany

www.weidmueller.com

## Technical data

## Dimensions and weights

Net weight	34 g
------------	------

## Temperatures

Storage temperature	-10 °C...70 °C	Operating temperature	-5 °C...40 °C
---------------------	----------------	-----------------------	---------------

## General data

Connector face	Type F	Fire load	770 kJ
Insert type	Insert Power large	Protection degree	IP20

## Clampable conductors

Conductor connection cross-section, extremely flexible with wire end ferrule	max.	1.5 mm <sup>2</sup>
	min.	1.5 mm <sup>2</sup>
Conductor connection cross-section, extremely flexible with wire end ferrule	1.5 ... 1.5 mm <sup>2</sup>	
Conductor connection cross-section, extremely flexible without wire end ferrule	1.5 ... 2.5 mm <sup>2</sup>	
Conductor connection cross-section, extremely flexible without wire end ferrule	min.	1.5 mm <sup>2</sup>
	max.	2.5 mm <sup>2</sup>
Conductor connection cross-section, flexible with wire end ferrule	1.5 ... 1.5 mm <sup>2</sup>	
Conductor connection cross-section, flexible with wire end ferrule	min.	1.5 mm <sup>2</sup>
	max.	1.5 mm <sup>2</sup>
Conductor connection cross-section, flexible without wire end ferrule	1.5 ... 2.5 mm <sup>2</sup>	
Conductor connection cross-section, flexible without wire end ferrule	min.	1.5 mm <sup>2</sup>
	max.	2.5 mm <sup>2</sup>
Conductor connection cross-section, rigid	min.	1.5 mm <sup>2</sup>
	max.	2.5 mm <sup>2</sup>
Conductor connection cross-section, rigid	1.5 ... 2.5 mm <sup>2</sup>	
Stripping length	10 mm	
Type of connection	PUSH IN	

## Technical data

Housing main material	Polycarbonate PC	Rated current	16 A
Rated voltage (AC)	250 V		

## General standards

Certificate No. (DNV)	TAA000022B
-----------------------	------------

## Classifications

ETIM 6.0	EC001121	ETIM 7.0	EC001121
ETIM 8.0	EC001121	ETIM 9.0	EC001121
ECLASS 9.0	27-44-03-90	ECLASS 9.1	27-18-90-90
ECLASS 10.0	27-44-03-90	ECLASS 11.0	27-44-03-90
ECLASS 12.0	27-18-28-92	ECLASS 13.0	27-18-28-92

**IE-FCI-PWB-DE****Weidmüller Interface GmbH & Co. KG**

Klingenbergstraße 26

D-32758 Detmold

Germany

[www.weidmueller.com](http://www.weidmueller.com)**Technical data****Approvals**

Approvals



ROHS

Conform

**Downloads**Approval/Certificate/Document of Con-  
formity[GL FrontCom](#)

Engineering Data

[CAD data – STEP](#)

User Documentation

[MAN IE GUIDE DE](#)[MAN IE GUIDE EN](#)[Socket Insert Overview EN](#)[Socket Insert Overview DE](#)[Designation key / Type key](#)

Catalogues

[Catalogues in PDF-format](#)

Brochures

[MB FREECONCONTACT EN](#)[FL FIELDWIRING EN](#)[PI PROFINET CABLING EN](#)[PI PROFINET CABLING EN](#)

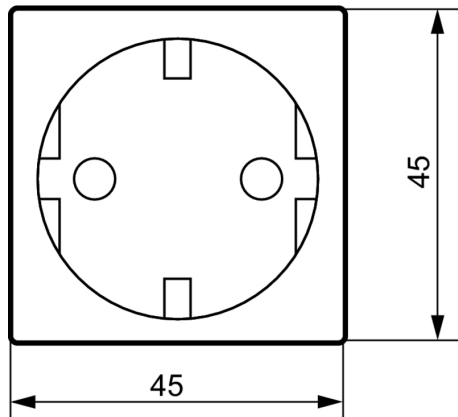
## IE-FCI-PWB-DE

**Weidmüller Interface GmbH & Co. KG**  
Klingenbergstraße 26  
D-32758 Detmold  
Germany

[www.weidmueller.com](http://www.weidmueller.com)

## Drawings

**Dimensioned drawing**



**Dimensioned drawing**

