

HDC MF 10B CA**Weidmüller Interface GmbH & Co. KG**

Klingenbergstraße 26

D-32758 Detmold

Germany

www.weidmueller.com**General ordering data**

| Version | Frame |
|------------|----------------------------|
| Order No. | 1428980000 |
| Type | HDC MF 10B CA |
| GTIN (EAN) | 4050118233278 |
| Qty. | 1 pc(s). |

HDC MF 10B CA

Weidmüller Interface GmbH & Co. KG

Klingenbergstraße 26

D-32758 Detmold

Germany

www.weidmueller.com

Technical data

Dimensions and weights

| | | | |
|------------|----------|-----------------|------------|
| Depth | 34.4 mm | Depth (inches) | 1.354 inch |
| Height | 36.4 mm | Height (inches) | 1.433 inch |
| Width | 64 mm | Width (inches) | 2.52 inch |
| Net weight | 67.541 g | | |

Temperatures

| | |
|-------------------|-------------------|
| Limit temperature | -40 °C ... 125 °C |
|-------------------|-------------------|

General data

| | | | |
|-----------------|--------------|-----------------|----------|
| Material | Diecast zinc | Number of slots | 3 |
| Plugging cycles | ≥ 500 | Series | ModuPlug |
| Size | 4 | | |

PE connection data

| | | | |
|-------------------------------|--------------------|---------------------------------------|---------------------|
| Conductor cross-section, max. | 10 mm ² | Conductor cross-section, min. | 0.5 mm ² |
| Connection type PE | Screw connection | Tightening torque, max. PE connection | 1.2 Nm |

Classifications

| | | | |
|-------------|-------------|-------------|-------------|
| ETIM 6.0 | EC002312 | ETIM 7.0 | EC002312 |
| ETIM 8.0 | EC002312 | ETIM 9.0 | EC002312 |
| ECLASS 9.0 | 27-44-02-06 | ECLASS 9.1 | 27-44-02-06 |
| ECLASS 10.0 | 27-44-02-06 | ECLASS 11.0 | 27-44-02-06 |
| ECLASS 12.0 | 27-44-02-92 | ECLASS 13.0 | 27-44-02-92 |

Environmental Product Compliance

| | |
|------------|--------------------------------------|
| REACH SVHC | Lead 7439-92-1 |
| SCIP | d447edfa-0214-4f34-b5ba-82eae491b46a |

Approvals

Approvals



| | |
|-------------------------|------------|
| ROHS | Conform |
| UL File Number Search | UL Website |
| Certificate No. (cURus) | E92202 |

Downloads

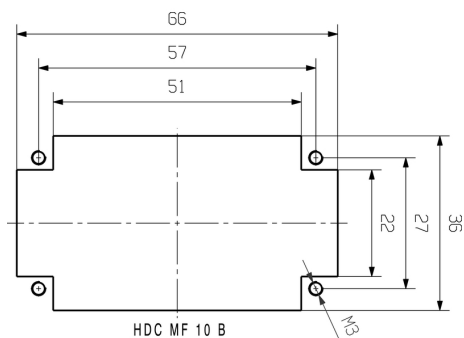
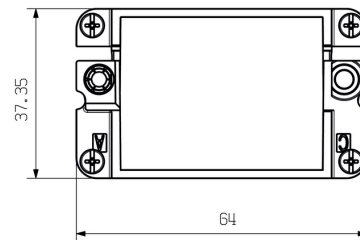
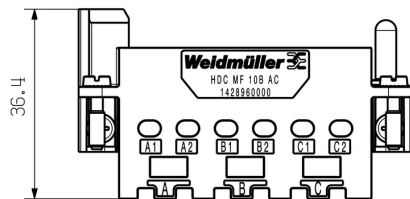
| | |
|---|--|
| Approval/Certificate/Document of Conformity | Manufacturer's declaration |
| Engineering Data | CAD data – STEP |
| Catalogues | Catalogues in PDF-format |
| Brochures | FL FIELDWIRING EN FL FIELDWIRING EN |

HDC MF 10B CA

Weidmüller Interface GmbH & Co. KG
Klingenbergstraße 26
D-32758 Detmold
Germany

www.weidmueller.com

Drawings



HDC MF 10B CA

Weidmüller Interface GmbH & Co. KG

Klingenbergstraße 26

D-32758 Detmold

Germany

www.weidmueller.com

Accessories

Miscellaneous



In addition to heavy-duty connectors, RockStar® includes the appropriate accessories for effective, functional and safe system cabling; e.g. coding systems, shield clamps, cover plates and replacement seals

General ordering data

| | | |
|------------|----------------------------|----------------|
| Type | HDC MF CA 16 PE | Version |
| Order No. | 1480940000 | PE extension |
| GTIN (EAN) | 4050118289657 | |
| Qty. | 10 pc(s). | |
| Type | HDC MF FIXING | Version |
| Order No. | 1480290000 | Transport lock |
| GTIN (EAN) | 4050118288704 | |
| Qty. | 20 pc(s). | |

Shield lever



In addition to heavy-duty connectors, RockStar® includes the appropriate accessories for effective, functional and safe system cabling; e.g. coding systems, shield clamps, cover plates and replacement seals

General ordering data

| | | |
|------------|----------------------------|--------------|
| Type | HDC MSL10 | Version |
| Order No. | 1435420000 | Shield clamp |
| GTIN (EAN) | 4050118239959 | |
| Qty. | 1 pc(s). | |

HDC MF 10B CA**Weidmüller Interface GmbH & Co. KG**

Klingenbergstraße 26

D-32758 Detmold

Germany

www.weidmueller.com**Accessories****HDC ModuPlug**

Various accessories are available for our inserts. This includes coding elements for the inserts.

**General ordering data**

| | | |
|------------|----------------------------|---|
| Type | HDC CM GUIDING SOCKET | Version |
| Order No. | 1202670000 | Heavy-duty connectors, Accessories, Accessories |
| GTIN (EAN) | 4032248985135 | |
| Qty. | 100 pc(s). | |
| Type | HDC CM GUIDING PIN | Version |
| Order No. | 1202660000 | Heavy-duty connectors, Accessories, Accessories |
| GTIN (EAN) | 4032248985258 | |
| Qty. | 100 pc(s). | |