

**CH20M AD SHL 5.00/04 GGY 2019****Weidmüller Interface GmbH & Co. KG**

Klingenbergstraße 26

D-32758 Detmold

Germany

[www.weidmueller.com](http://www.weidmueller.com)**Product image****The perfect platform for function and innovation:**

Innovative function electronics require intelligent "packages" in order to integrate perfectly in the system environment.

The ongoing development and consistent expansion of the Weidmüller electronics housing portfolio provides a secure platform for future electronics applications whatever the design or intended use. CAD data for PCBs is provided for all enclosures. Screw and tension clamp terminals are available for all connections.

The consistent synergy between design, connection system and functionality lays the perfect foundation stone for electronics systems designed in line with market and application requirements.

Function, shape and manufacturing quality combine into a single logical unit that provides maximum reliability and operating comfort for the user.

**General ordering data**

Version	Hood, OMNIMATE Housing - series CH20M Graphite grey, Side element cover, Width: 22.5 mm
Order No.	<a href="#">1413740000</a>
Type	CH20M AD SHL 5.00/04 GGY 2019
GTIN (EAN)	4050118241648
Qty.	50 pc(s).

## CH20M AD SHL 5.00/04 GGY 2019

Weidmüller Interface GmbH &amp; Co. KG

Klingenbergstraße 26

D-32758 Detmold

Germany

www.weidmueller.com

## Technical data

## Dimensions and weights

Depth	14.6 mm	Depth (inches)	0.575 inch
Height	23.7 mm	Height (inches)	0.933 inch
Width	22.5 mm	Width (inches)	0.886 inch
Net weight	1.6 g		

## Temperatures

Operating temperature range	-40 °C... 120 °C	Humidity	5 - 93% rel. humidity, Tu = 40°C, no condensation
-----------------------------	------------------	----------	---

## Material data

Comparative Tracking Index (CTI)	600 ≤ CTI	Insulating material	PA 66 GF 30
Insulating material group	I		

## General data

Colour	Graphite grey	Colour chart (similar)	RAL 7024
Encapsulation option	No	Protection degree	IP20 in installed state

## Classifications

ETIM 7.0	EC001031	ETIM 8.0	EC001031
ETIM 9.0	EC001031	ECLASS 11.0	27-18-27-92
ECLASS 12.0	27-18-27-92	ECLASS 13.0	27-19-06-05

## Approvals

ROHS	Conform
------	---------

## Downloads

Engineering Data	<a href="#">CAD data – STEP</a>
Catalogues	<a href="#">Catalogues in PDF-format</a>

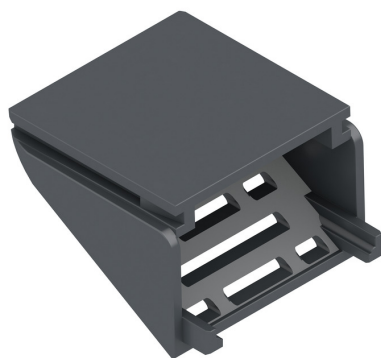
## CH20M AD SHL 5.00/04 GGY 2019

**Weidmüller Interface GmbH & Co. KG**  
Klingenbergstraße 26  
D-32758 Detmold  
Germany

[www.weidmueller.com](http://www.weidmueller.com)

# Drawings

## Product image



## Dimensioned drawing

