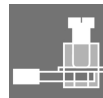


ACT20C-AI-AO-MTCP**Weidmüller Interface GmbH & Co. KG**

Klingenbergstraße 26

D-32758 Detmold

Germany

www.weidmueller.com**Product image****Only remaining stock available****ModbusTCP****FDT2**

The ACT20C series was especially developed for applications with continuous processes. It enables the continuous monitoring of diagnostic, device and process information ("condition monitoring").

Several ACT20C components form a station which consists of an ACT20C Ethernet gateway, communicative ACT20C signal converters and an ACT20C bus termination terminal.

General ordering data

Order No.	1334490000
Type	ACT20C-AI-AO-MTCP
GTIN (EAN)	4050118137675
Qty.	1 pc(s).
Delivery status	This article will no longer be available in the future.
Available until	2023-05-31

ACT20C-AI-AO-MTCP

Weidmüller Interface GmbH & Co. KG

Klingenbergstraße 26

D-32758 Detmold

Germany

www.weidmueller.com

Technical data

Dimensions and weights

Depth	113.6 mm	Depth (inches)	4.472 inch
Width	22.5 mm	Width (inches)	0.886 inch
Length	119.2 mm	Length (inches)	4.693 inch
Net weight	169 g		

Temperatures

Storage temperature	-20 °C...85 °C	Operating temperature	-20 °C...70 °C
Humidity	0...95 % (no condensation)		

Communication

Addressing	DHCP or manual adjustment	Configuration	FDT/DTM (Ethernet or service interface)
Interface	RJ45: female-female, Cat.5 to 100 MHz, Jack plug for CBX200	Protocol	
RJ45 ports	10/100BaseT(X), auto negotiation		FDT/DTM, Modbus/TCP

Input

Input current	0...20 mA, 4...20 mA	Input voltage	0(2)...10 V
Number of inputs	1	Sensor supply	> 17 V DC at 20 mA

Output

Load impedance current	≤ 500 Ω	Number of outputs	1
Output current	0...20 mA, 4...20 mA	Output voltage, note	0...10 V
load impedance voltage	≥ 10 kΩ		

Output (analogue)

Load resistance current	≤ 500 Ω	Load resistance voltage	≥ 10 kΩ
Output current	0(4)...20 mA	Output current	0...20 mA, 4...20 mA
Output voltage	0...10 V	Transmit function	direct or inverted

General data

Accuracy	< 0.15% end value (+ 0.05% > 55 °C), Current: 1 µA / 30 µA (+ 10 µA > 55°C), Voltage: 1 mV / 15 mV (+ 5 mV > 55°C)	Configuration	FDT/DTM (Ethernet or service interface)
Galvanic isolation	4-way isolator, between input / output / power supply / Ethernet	Power consumption	≤ 3.5 W
Rail	TS 35	Temperature coefficient	≤ 0.01 % / °C
Voltage supply	24 V DC ± 25 %		

ACT20C-AI-AO-MTCP

Weidmüller Interface GmbH & Co. KG

Klingenbergstraße 26

D-32758 Detmold

Germany

www.weidmueller.com

Technical data

Insulation coordination

EMC standards	EN 61326-1:2006	Galvanic isolation	4-way isolator, between input / output / power supply / Ethernet
Pollution severity	2	Rated voltage / test voltage: Ethernet interface to supply / functional earth to supply / Ethernet interface	31.2 V DC / 0.9 kV _{rms} in secondary electrical circuits, basic insulation
Rated voltage / test voltage: functional earth to input / output	300 V _{rms} / 1.1 kV _{rms} in secondary electrical circuits, basic insulation	Rated voltage / test voltage: input/output to output/input / supply / Ethernet interface	300 V _{rms} / 1.7 kV _{rms} in secondary electrical circuits, reinforced insulation
Recommendations	Namur NE43, Namur NE44, Namur NE107		

Connection data

Type of connection	Screw connection / RJ45 plug-in connector	Tightening torque, min.	0.4 Nm
Tightening torque, max.	0.6 Nm	Clamping range, rated connection	1.5 mm ²
Clamping range, min.	0.5 mm ²	Clamping range, max.	2.5 mm ²
Wire connection cross section AWG, min.	AWG 30	Wire connection cross section AWG, max.	AWG 14
Wire cross-section, solid, min.	0.5 mm ²	Wire cross-section, solid, max.	2.5 mm ²

Classifications

ETIM 6.0	EC002653	ETIM 7.0	EC002653
ETIM 8.0	EC002653	ETIM 9.0	EC002653
ECLASS 9.0	27-21-01-20	ECLASS 9.1	27-21-01-90
ECLASS 10.0	27-21-01-20	ECLASS 11.0	27-21-01-20
ECLASS 12.0	27-21-01-20	ECLASS 13.0	27-21-01-20

Environmental Product Compliance

REACH SVHC	Lead 7439-92-1
SCIP	2f6dd957-421a-46db-a0c2-cf1609156924

Important note

Product information

With the ACT20C, Weidmüller is presenting a completely new type of signal converter. The compact module is equipped with an Ethernet connection and provides, in addition to signals, precise information on the status of sensors, signal processing and cabling.

ACT20C, as a signal converter, isolates, scales and converts analogue current and voltage signals; it can be configured directly with the "WI-Manager" software or via an Ethernet network. The software is based on the supplier-independent FDT/DTM technology.

The ACT20C has been designed specifically for process automation in order to continuously forward measured values and status information to networked devices. During standard operation, malfunction, maintenance or configuration via the network, this allows a precise display of the current status. In case of error, the ACT20C supplies precise information for error analysis and can therefore contribute to higher system availability.

Approvals

Approvals	DNVGL;
ROHS	Conform

Creation date April 29, 2024 4:58:07 PM CEST

Catalogue status 20.04.2024 / We reserve the right to make technical changes.

ACT20C-AI-AO-MTCP

Weidmüller Interface GmbH & Co. KG

Klingenbergstraße 26

D-32758 Detmold

Germany

www.weidmueller.com

Technical data

Downloads

Approval/Certificate/Document of Conformity

[Application notes – Declaration of Conformity](#)

Engineering Data

[CAD data – STEP](#)

Software

[WI-Manager, DTM-Library for online installation](#)

[Release notes for Weidmueller FDT-DTM Software version](#)

User Documentation

[Manual](#)

[Application notes – Instruction sheet](#)

Catalogues

[Catalogues in PDF-format](#)

Brochures

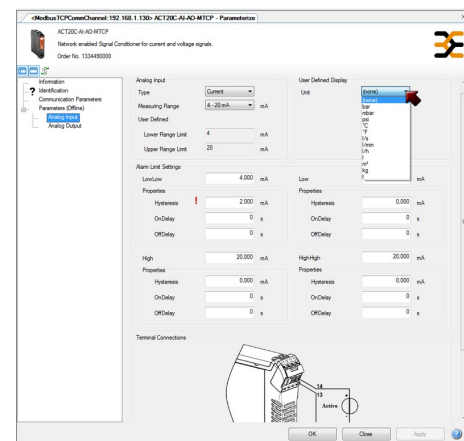
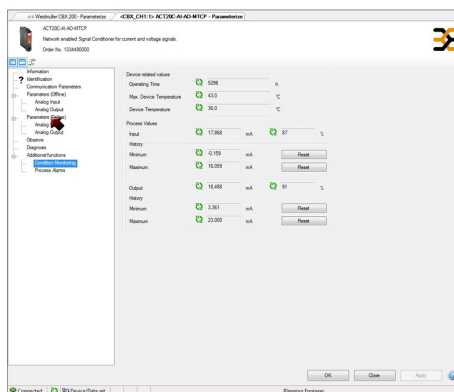
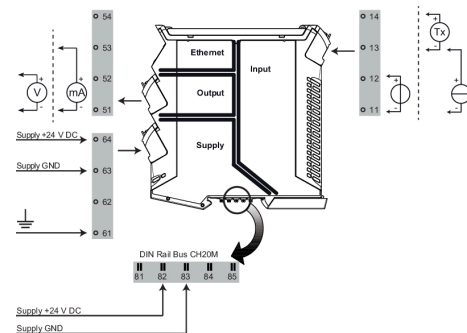
ACT20C-AI-AO-MTCP

Weidmüller Interface GmbH & Co. KG
Klingenbergstraße 26
D-32758 Detmold
Germany

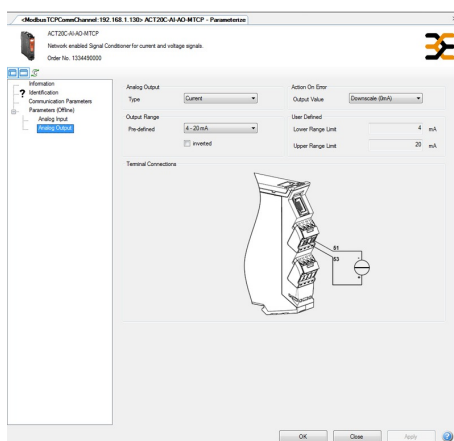
www.weidmueller.com

Drawings

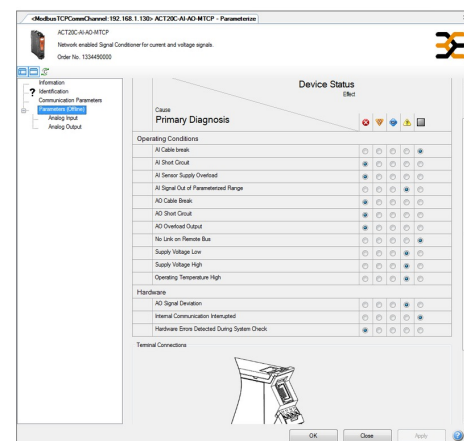
Connection diagram



Screenshot configuration with FDT/DTM example for input



Screenshot configuration with FDT/DTM example for output



Screenshot configuration with FDT/DTM example for diagnosis

ACT20C-AI-AO-MTCP**Weidmüller Interface GmbH & Co. KG**

Klingenbergstraße 26

D-32758 Detmold

Germany

www.weidmueller.com**Accessories****Blank**

ESG is the tried-and-tested marker in MultiCard format for use on many well-known electrical devices. The result is high-quality device marking with a high-contrast appearance.

Various types are available for devices from manufacturers like Siemens, ABB, Beckhoff etc.

Advantages at a glance:

- Tags for universal usage, self-adhesive or clip-on tags, depending on type
- For aligned equipment, e.g. circuit breakers, we supply ESG markers for clipping onto tag rails
- Individual laser-quality printing according to specifications

For custom printing: Please send us a file of our labeling software M-Print PRO or M-Print PRO Online (without installation) for your labeling specifications.

General ordering data

Type	ESG 6.6/20 BHZ 5.00/04	Version
Order No.	1082540000	ESG, Device markers x 20 mm, PA 66, Colour: white
GTIN (EAN)	4032248845439	
Qty.	200 pc(s).	

ACT20C-AI-AO-MTCP**Weidmüller Interface GmbH & Co. KG**

Klingenbergstraße 26

D-32758 Detmold

Germany

www.weidmueller.com**Accessories****Blank**

ESG is the tried-and-tested marker in MultiCard format for use on many well-known electrical devices. The result is high-quality device marking with a high-contrast appearance.

Various types are available for devices from manufacturers like Siemens, ABB, Beckhoff etc.

Advantages at a glance:

- Tags for universal usage, self-adhesive or clip-on tags, depending on type
- For aligned equipment, e.g. circuit breakers, we supply ESG markers for clipping onto tag rails
- Individual laser-quality printing according to specifications

For custom printing: Please send us a file of our labeling software M-Print PRO or M-Print PRO Online (without installation) for your labeling specifications.

General ordering data

Type	ESG 8/13.5/43.3 SAI AU	Version
Order No.	1912130000	ESG, Device markers x 13.5 mm, PA 66, Colour: Transparent
GTIN (EAN)	4032248541164	
Qty.	5 pc(s).	

Configuration interfaces**General ordering data**

Type	CBX200 USB
Order No.	8978580000
GTIN (EAN)	4032248813759
Qty.	1 pc(s).

ACT20C-AI-AO-MTCP

Weidmüller Interface GmbH & Co. KG
Klingenbergstraße 26
D-32758 Detmold
Germany

www.weidmueller.com

Drawings

