

SAIE-M12S-PB-0.5U HW**Weidmüller Interface GmbH & Co. KG**

Klingenbergstraße 26

D-32758 Detmold

Germany

www.weidmueller.com

Various build-in connectors are required for the connections on the device side of the sensor/actuator cabling. These are available in the versions M12, M8 and M5.

General ordering data

Version	Built-in plugs, M12, PG 9, Number of poles: 2, 0.5 m
Order No.	1279490050
Type	SAIE-M12S-PB-0.5U HW
GTIN (EAN)	4050118076400
Qty.	1 pc(s).

SAIE-M12S-PB-0.5U HW**Weidmüller Interface GmbH & Co. KG**

Klingenbergstraße 26

D-32758 Detmold

Germany

www.weidmueller.com**Technical data****Dimensions and weights**

Net weight	46 g
------------	------

Technical specifications for cable

Cable length	0.5 m	Core cross-section	0.25 mm ²
Core cross-section AWG	AWG 24	Number of poles	2
PE function	No	Sheathing colour	violet (similar to RAL 4001)

Technical data customisable plug-in connectors

Cable glands	PG 9	Coding	B-coded
Conductor cross-section, max.	0.25 mm ²	Contact surface	Gold-plated
Housing main material	Zinc diecast, nickel-plated	Number of poles	2
Plugging cycles	≥ 500	Pollution severity	3
Protection degree	IP68	Rated current	4 A
Rated voltage	250 V	Temperature range of housing	-20 ... +60 °C
Type of connection	Pin		

Classifications

ETIM 6.0	EC002635	ETIM 7.0	EC003570
ETIM 8.0	EC003570	ETIM 9.0	EC003570
ECLASS 9.0	27-44-01-03	ECLASS 9.1	27-44-01-03
ECLASS 10.0	27-44-01-03	ECLASS 11.0	27-44-01-03
ECLASS 12.0	27-44-01-03	ECLASS 13.0	27-44-01-03

Environmental Product Compliance

REACH SVHC	Lead 7439-92-1
SCIP	e8d8af70-4c85-4483-bc8c-9bc5b598e2a9

Approvals

ROHS	Conform
------	---------

Downloads

Catalogues	Catalogues in PDF-format
Brochures	FL FIELDWIRING EN FL FIELDWIRING EN

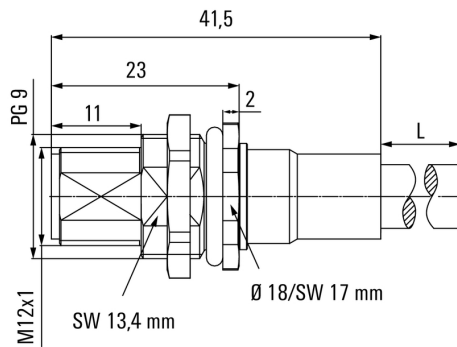
SAIE-M12S-PB-0.5U HW

Weidmüller Interface GmbH & Co. KG
Klingenbergstraße 26
D-32758 Detmold
Germany

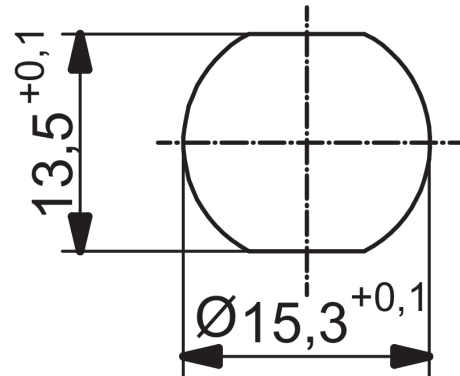
www.weidmueller.com

Drawings

Dimensioned drawing



Detailed drawing



Wiring diagram

