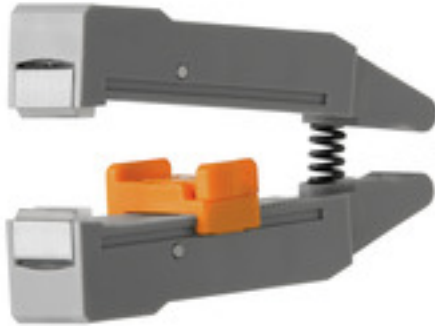


**ERME 10<sup>2</sup> SPX 4****Weidmüller Interface GmbH & Co. KG**

Klingenbergstraße 26

D-32758 Detmold

Germany

[www.weidmueller.com](http://www.weidmueller.com)

- Stripping tools with automatic self-adjustment
- For flexible and solid conductors
- Ideally suitable for mechanical and plant engineering, railway and rail traffic, wind energy, robot technology, explosion protection as well as marine, offshore and ship building sectors
- Stripping length adjustable via end stop
- Automatic opening of clamping jaws after stripping
- No fanning-out of individual conductors
- Adjustable to diverse insulation thicknesses
- Double-insulated cables in two process steps without special adjustment
- No play in self-adjusting cutting unit
- Long service life
- Optimised ergonomic design

**General ordering data**

Version	Accessories, Cutter holder
Order No.	<a href="#">1119030000</a>
Type	ERME 10 <sup>2</sup> SPX 4
GTIN (EAN)	4032248948420
Qty.	1 pc(s).

**ERME 10<sup>2</sup> SPX 4****Weidmüller Interface GmbH & Co. KG**

Klingenbergstraße 26

D-32758 Detmold

Germany

[www.weidmueller.com](http://www.weidmueller.com)**Technical data****Dimensions and weights**

Depth	11.2 mm	Depth (inches)	0.441 inch
Height	23 mm	Height (inches)	0.906 inch
Width	52 mm	Width (inches)	2.047 inch
Net weight	25.6 g		

**Technical data**

Description of article	Blade head for Stripax 10
------------------------	---------------------------

**Stripping tools**

Colour	grey	Conductor cross-section, max.	10 mm <sup>2</sup>
Conductor cross-section, min.	0.08 mm <sup>2</sup>		

**Classifications**

ETIM 6.0	EC001509	ETIM 7.0	EC001509
ETIM 8.0	EC001509	ETIM 9.0	EC001509
ECLASS 9.0	21-04-92-37	ECLASS 9.1	21-01-90-90
ECLASS 10.0	21-04-92-37	ECLASS 11.0	21-04-48-91
ECLASS 12.0	21-04-48-91	ECLASS 13.0	21-04-48-91

**Downloads**

Catalogues	<a href="#">Catalogues in PDF-format</a>
Brochures	