

LS 2.8 WDU2.5-10**Weidmüller Interface GmbH & Co. KG**

Klingenbergstraße 26

D-32758 Detmold

Germany

www.weidmueller.com**Product image**

With the LS 2.8 WDU2.5-10, many feed-through modular terminal blocks from the W series can be converted very easily. Inserting the LS 2.8 WDU2.5-10 allows the cable shielding braid to be looped through directly at the terminal block by soldering or using a suitable flat cable lug.

General ordering data

Version	W-Series, Shield bus
Order No.	1056400000
Type	LS 2.8 WDU2.5-10
GTIN (EAN)	4008190036454
Qty.	100 pc(s).

LS 2.8 WDU2.5-10

Weidmüller Interface GmbH & Co. KG

Klingenbergstraße 26

D-32758 Detmold

Germany

www.weidmueller.com

Technical data

Dimensions and weights

Depth	4.3 mm	Depth (inches)	0.169 inch
Height	75.2 mm	Height (inches)	2.961 inch
Width	1.15 mm	Width (inches)	0.045 inch
Net weight	1.59 g		

Temperatures

Storage temperature	-25 °C...55 °C
---------------------	----------------

Material data

Material	tinned copper	Colour	Silver grey
----------	---------------	--------	-------------

Additional technical data

Explosion-tested version	No	Installation advice	Direct mounting
Type of fixing	Snap-on		

General

Installation advice	Direct mounting
---------------------	-----------------

Classifications

ETIM 6.0	EC002848	ETIM 7.0	EC002848
ETIM 8.0	EC002848	ETIM 9.0	EC002848
ECLASS 9.0	27-14-11-92	ECLASS 9.1	27-14-11-92
ECLASS 10.0	27-14-11-92	ECLASS 11.0	27-14-11-92
ECLASS 12.0	27-14-11-92	ECLASS 13.0	27-14-11-92

Approvals

ROHS	Conform
------	---------

Downloads

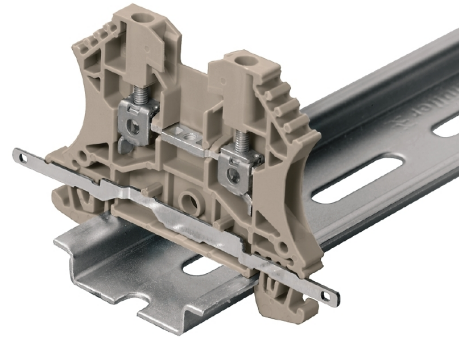
Engineering Data	CAD data – STEP
Engineering Data	Zuken E3.S
User Documentation	Beipackzettel_LS2.8.pdf StorageConditionsTerminalBlocks
Catalogues	Catalogues in PDF-format
Brochures	CAT 1 TERM 16/17 EN

LS 2.8 WDU2.5-10

Weidmüller Interface GmbH & Co. KG
Klingenbergstraße 26
D-32758 Detmold
Germany

www.weidmueller.com

Drawings



LS 2.8 WDU2.5-10

Weidmüller Interface GmbH & Co. KG

Klingenbergstraße 26

D-32758 Detmold

Germany

www.weidmueller.com

Accessories

Cable-lug sleeves

**Insulated tab-connector sleeves made from PVC with copper sleeve**

- Commercially available designs
- Not soldered
- With conical entry funnel

General ordering data

Type	VFSKHI/1,5-2,5/288	Version
Order No.	1491740000	cable lug, terminal end, Insulated cable connector, 2.5 mm ² , 1.5 mm ² -
GTIN (EAN)	4050118301472	2.5 mm ²
Qty.	100 pc(s).	
Type	VFSKHI/0,1-0,5/288	Version
Order No.	1491630000	cable lug, terminal end, Insulated cable connector, 0.5 mm ² , 0.1 mm ² -
GTIN (EAN)	4050118301489	0.5 mm ²
Qty.	100 pc(s).	
Type	LIF 1,5F288 R	Version
Order No.	9200520000	cable lug, terminal end, Insulated cable connector, 1.5 mm ² , 0.5 mm ² -
GTIN (EAN)	4032248410361	1.5 mm ²
Qty.	100 pc(s).	
Type	VFSKHI/0,5-1,0/288	Version
Order No.	1491650000	cable lug, terminal end, Insulated cable connector, 1 mm ² , 0.5 mm ² - 1
GTIN (EAN)	4050118301519	mm ²
Qty.	100 pc(s).	

Cable-lug sleeves, fully insulated

**Fully-insulated tab-connector sleeves made from PVC with copper sleeve**

- Commercially available designs
- Not soldered
- With conical entry funnel

General ordering data

Type	VFSKHV/0,5-1,0/288	Version
Order No.	1491870000	cable lug, terminal end, Insulated cable connector, 1 mm ² , 0.5 mm ² - 1
GTIN (EAN)	4050118301908	mm ²
Qty.	100 pc(s).	