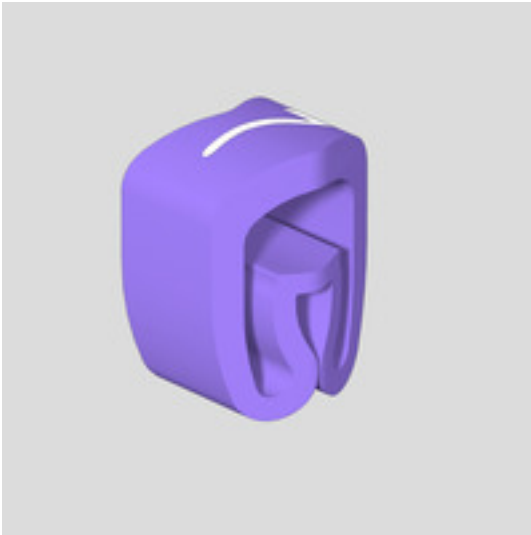


CLI C 02-3 VI/WS 7 MP**Weidmüller Interface GmbH & Co. KG**

Klingenbergstraße 26

D-32758 Detmold

Germany

www.weidmueller.com

CLI C conductor markers are mounted on unconnected conductors. Four different sizes are available for labelling conductor cross-sections from 0.5 mm² to max. 70 mm². The markers are already printed and ready for use. Individual labelling is possible by combining the individual markers.

- Closed markers, reliable and for mounting on unconnected cables
- A special flexible bellow profile ensures a wide application range
- Fast and easy to fit – with minimal effort
- Corresponding accessories make labelling easy
- Permanent, high-quality labelling
- High contrast for optimum legibility

General ordering data

Version	CableLine, Conductor and cable markers, 1.3 - 3 mm, 3 x 3.4 mm, violet
Order No.	0252111524
Type	CLI C 02-3 VI/WS 7 MP
GTIN (EAN)	4032248005017
Qty.	200 pc(s).

CLI C 02-3 VI/WS 7 MP

Weidmüller Interface GmbH & Co. KG

Klingenbergstraße 26

D-32758 Detmold

Germany

www.weidmueller.com

Technical data

Dimensions and weights

Depth	3.5 mm	Depth (inches)	0.138 inch
Height	3 mm	Height (inches)	0.118 inch
Width	3.4 mm	Width (inches)	0.134 inch
Net weight	0.034 g		

Temperatures

Operating temperature range	-30...80 °C
-----------------------------	-------------

General data

Colour	violet	
Colour of printing	white	
Halogen	Yes	
Material	PVC, soft, without Cadmium	
Material colour according to resistance code	7	
Number of markers per combination	1 Component part = Conductor and cable markers	
Number of markers per packaging unit	Form of supply	Component part
Operating temperature range	-30...80 °C	
Operating temperature range, max.	80 °C	
Operating temperature range, min.	-30 °C	
Orientation of print	horizontal	
Printed characters	Numbers	
Printing	7	
Printing method	hot-embossing	
Recommended industries	Process, Machinery	
Type of printing	Standard	
UL 94 flammability rating	V-0	
Version	MultiPack	
Width	3.4 mm	

Conductor and cable markers

Conductor O.D.	1.3 - 3 mm	Conductor O.D., max.	3 mm
Conductor O.D., min.	1.3 mm	Conductor cross-section, max.	1.5 mm ²
Conductor cross-section, min.	0.2 mm ²	Cross-section for connected wire	0.2 - 1.5 mm ²
Halogen	Yes		

Classifications

ETIM 6.0	EC001530	ETIM 7.0	EC001530
ETIM 8.0	EC001530	ETIM 9.0	EC001530
ECLASS 9.0	27-40-04-01	ECLASS 9.1	27-40-04-01
ECLASS 10.0	27-40-04-01	ECLASS 11.0	27-28-11-02
ECLASS 12.0	27-28-11-02	ECLASS 13.0	27-28-11-02

Approvals

ROHS	Conform
------	---------

CLI C 02-3 VI/WS 7 MP

Weidmüller Interface GmbH & Co. KG

Klingenbergstraße 26

D-32758 Detmold

Germany

www.weidmueller.com

Technical data

Downloads

Product Change Notification

[PCN CableLine_DE](#)

[PCN CableLine_EN](#)

Catalogues

[Catalogues in PDF-format](#)

CLI C 02-3 VI/WS 7 MP

Weidmüller Interface GmbH & Co. KG

Klingenbergstraße 26

D-32758 Detmold

Germany

www.weidmueller.com

Accessories

Mandrels single



The CableLine range of wire and cable marker products provides users with solutions for the most diverse applications. The range of applications extends from narrow wires right up to cables with large outside diameters.

General ordering data

Type	CLI R 02 F. CLI C 02-3	Version
Order No.	0559900000	CableLine, Mounting mandrel
GTIN (EAN)	4008190081645	
Qty.	20 pc(s).	

0 - 9



The CableLine range of wire and cable marker products provides users with solutions for the most diverse applications. The range of applications extends from narrow wires right up to cables with large outside diameters.

General ordering data

Type	CLI R 02-3 GE/SW 4	Version
Order No.	0560001513	CableLine, Mounting mandrel
GTIN (EAN)	4008190186081	
Qty.	10 pc(s).	
Type	CLI R 02-3 GE/SW 1	Version
Order No.	0560001504	CableLine, Mounting mandrel
GTIN (EAN)	4008190046590	
Qty.	10 pc(s).	
Type	CLI R 02-3 GE/SW 0	Version
Order No.	0560001501	CableLine, Mounting mandrel
GTIN (EAN)	4008190063498	
Qty.	10 pc(s).	
Type	CLI R 02-3 GE/SW 2	Version
Order No.	0560001507	CableLine, Mounting mandrel
GTIN (EAN)	4008190083137	
Qty.	10 pc(s).	
Type	CLI R 02-3 GE/SW 6	Version
Order No.	0560001519	CableLine, Mounting mandrel
GTIN (EAN)	4008190019129	
Qty.	10 pc(s).	

CLI C 02-3 VI/WS 7 MP

Weidmüller Interface GmbH & Co. KG

Klingenbergstraße 26

D-32758 Detmold

Germany

www.weidmueller.com

Accessories

Type	CLI R 02-3 GE/SW 5	Version
Order No.	0560001516	CableLine, Mounting mandrel
GTIN (EAN)	4008190188436	
Qty.	10 pc(s).	
Type	CLI R 02-3 GE/SW 9	Version
Order No.	0560001528	CableLine, Mounting mandrel
GTIN (EAN)	4008190141516	
Qty.	10 pc(s).	
Type	CLI R 02-3 GE/SW 7	Version
Order No.	0560001522	CableLine, Mounting mandrel
GTIN (EAN)	4008190185213	
Qty.	10 pc(s).	
Type	CLI R 02-3 GE/SW 8	Version
Order No.	0560001525	CableLine, Mounting mandrel
GTIN (EAN)	4008190154875	
Qty.	10 pc(s).	
Type	CLI R 02-3 GE/SW 3	Version
Order No.	0560001510	CableLine, Mounting mandrel
GTIN (EAN)	4008190046941	
Qty.	10 pc(s).	

A - Z



The CableLine range of wire and cable marker products provides users with solutions for the most diverse applications. The range of applications extends from narrow wires right up to cables with large outside diameters.

General ordering data

Type	CLI R 02-3 GE/SW T	Version
Order No.	0560001678	CableLine, Mounting mandrel
GTIN (EAN)	4008190990015	
Qty.	10 pc(s).	
Type	CLI R 02-3 GE/SW O	Version
Order No.	0560001666	CableLine, Mounting mandrel
GTIN (EAN)	4008190989965	
Qty.	10 pc(s).	
Type	CLI R 02-3 GE/SW L	Version
Order No.	0560001660	CableLine, Mounting mandrel
GTIN (EAN)	4008190989934	
Qty.	10 pc(s).	
Type	CLI R 02-3 GE/SW C	Version
Order No.	0560001642	CableLine, Mounting mandrel
GTIN (EAN)	4008190989842	
Qty.	10 pc(s).	

Creation date May 5, 2024 10:31:53 AM CEST

Catalogue status 20.04.2024 / We reserve the right to make technical changes.

CLI C 02-3 VI/WS 7 MP

Weidmüller Interface GmbH & Co. KG

Klingenbergstraße 26

D-32758 Detmold

Germany

www.weidmueller.com

Accessories

Type	CLI R 02-3 GE/SW N	Version
Order No.	0560001664	CableLine, Mounting mandrel
GTIN (EAN)	4008190989958	
Qty.	10 pc(s).	
Type	CLI R 02-3 GE/SW M	Version
Order No.	0560001662	CableLine, Mounting mandrel
GTIN (EAN)	4008190989941	
Qty.	10 pc(s).	
Type	CLI R 02-3 GE/SW I	Version
Order No.	0560001654	CableLine, Mounting mandrel
GTIN (EAN)	4008190989903	
Qty.	10 pc(s).	
Type	CLI R 02-3 GE/SW R	Version
Order No.	0560001672	CableLine, Mounting mandrel
GTIN (EAN)	4008190989996	
Qty.	10 pc(s).	
Type	CLI R 02-3 GE/SW Z	Version
Order No.	0560001699	CableLine, Mounting mandrel
GTIN (EAN)	4008190990077	
Qty.	10 pc(s).	
Type	CLI R 02-3 GE/SW P	Version
Order No.	0560001668	CableLine, Mounting mandrel
GTIN (EAN)	4008190989972	
Qty.	10 pc(s).	
Type	CLI R 02-3 GE/SW U	Version
Order No.	0560001680	CableLine, Mounting mandrel
GTIN (EAN)	4008190990022	
Qty.	10 pc(s).	
Type	CLI R 02-3 GE/SW Y	Version
Order No.	0560001697	CableLine, Mounting mandrel
GTIN (EAN)	4008190990060	
Qty.	10 pc(s).	
Type	CLI R 02-3 GE/SW A	Version
Order No.	0560001638	CableLine, Mounting mandrel
GTIN (EAN)	4008190989828	
Qty.	10 pc(s).	
Type	CLI R 02-3 GE/SW V	Version
Order No.	0560001682	CableLine, Mounting mandrel
GTIN (EAN)	4008190990039	
Qty.	10 pc(s).	
Type	CLI R 02-3 GE/SW G	Version
Order No.	0560001650	CableLine, Mounting mandrel
GTIN (EAN)	4008190989880	
Qty.	10 pc(s).	
Type	CLI R 02-3 GE/SW J	Version
Order No.	0560001656	CableLine, Mounting mandrel
GTIN (EAN)	4008190989910	
Qty.	10 pc(s).	
Type	CLI R 02-3 GE/SW Q	Version
Order No.	0560001670	CableLine, Mounting mandrel
GTIN (EAN)	4008190989989	
Qty.	10 pc(s).	

Creation date May 5, 2024 10:31:53 AM CEST

Catalogue status 20.04.2024 / We reserve the right to make technical changes.

CLI C 02-3 VI/WS 7 MP

Weidmüller Interface GmbH & Co. KG

Klingenbergstraße 26

D-32758 Detmold

Germany

www.weidmueller.com

Accessories

Type	CLI R 02-3 GE/SW B	Version
Order No.	0560001640	CableLine, Mounting mandrel
GTIN (EAN)	4008190989835	
Qty.	10 pc(s).	
Type	CLI R 02-3 GE/SW H	Version
Order No.	0560001652	CableLine, Mounting mandrel
GTIN (EAN)	4008190989897	
Qty.	10 pc(s).	
Type	CLI R 02-3 GE/SW D	Version
Order No.	0560001644	CableLine, Mounting mandrel
GTIN (EAN)	4008190989859	
Qty.	10 pc(s).	
Type	CLI R 02-3 GE/SW X	Version
Order No.	0560001693	CableLine, Mounting mandrel
GTIN (EAN)	4008190990053	
Qty.	10 pc(s).	
Type	CLI R 02-3 GE/SW W	Version
Order No.	0560001684	CableLine, Mounting mandrel
GTIN (EAN)	4008190990046	
Qty.	10 pc(s).	
Type	CLI R 02-3 GE/SW E	Version
Order No.	0560001646	CableLine, Mounting mandrel
GTIN (EAN)	4008190989866	
Qty.	10 pc(s).	
Type	CLI R 02-3 GE/SW K	Version
Order No.	0560001658	CableLine, Mounting mandrel
GTIN (EAN)	4008190989927	
Qty.	10 pc(s).	
Type	CLI R 02-3 GE/SW F	Version
Order No.	0560001648	CableLine, Mounting mandrel
GTIN (EAN)	4008190989873	
Qty.	10 pc(s).	
Type	CLI R 02-3 GE/SW S	Version
Order No.	0560001675	CableLine, Mounting mandrel
GTIN (EAN)	4008190990008	
Qty.	10 pc(s).	

CLI C 02-3 VI/WS 7 MP

Weidmüller Interface GmbH & Co. KG

Klingenbergstraße 26

D-32758 Detmold

Germany

www.weidmueller.com

Accessories

Special characters



The CableLine range of wire and cable marker products provides users with solutions for the most diverse applications. The range of applications extends from narrow wires right up to cables with large outside diameters.

General ordering data

Type	CLI R 02-3 GE/SW +	Version
Order No.	0560001738	CableLine, Mounting mandrel
GTIN (EAN)	4008190990084	
Qty.	10 pc(s).	
Type	CLI R 02-3 GE/SW .	Version
Order No.	0560001749	CableLine, Mounting mandrel
GTIN (EAN)	4008190990138	
Qty.	10 pc(s).	
Type	CLI R 02-3 GE/SW ET	Version
Order No.	0560001745	CableLine, Mounting mandrel
GTIN (EAN)	4008190990121	
Qty.	10 pc(s).	
Type	CLI R 02-3 GE/SW /	Version
Order No.	0560001743	CableLine, Mounting mandrel
GTIN (EAN)	4008190990114	
Qty.	10 pc(s).	
Type	CLI R 02-3 GE/SW -	Version
Order No.	0560001740	CableLine, Mounting mandrel
GTIN (EAN)	4008190990091	
Qty.	10 pc(s).	

Others



The CableLine range of wire and cable marker products provides users with solutions for the most diverse applications. The range of applications extends from narrow wires right up to cables with large outside diameters.

General ordering data

Type	CLI R 02-3 BL/WS -	Version
Order No.	0560001741	CableLine, Mounting mandrel
GTIN (EAN)	4008190990107	
Qty.	10 pc(s).	

CLI C 02-3 VI/WS 7 MP**Weidmüller Interface GmbH & Co. KG**

Klingenbergstraße 26

D-32758 Detmold

Germany

www.weidmueller.com**Accessories**

Type	CLI R 02-3 RT/WS +	Version
Order No.	0560001739	CableLine, Mounting mandrel
GTIN (EAN)	4008190990145	
Qty.	10 pc(s).	