

**LID 1,5M4 R****Weidmüller Interface GmbH & Co. KG**

Klingenbergstraße 26

D-32758 Detmold

Germany

www.weidmueller.com

**Insulated circular plug made from PVC with copper sleeve**

- Commercially available designs
- Not soldered
- With conical entry funnel

**General ordering data**

Version	cable lug, terminal end, Insulated cable connector, 0.5 mm <sup>2</sup> - 1.5 mm <sup>2</sup> , red
Order No.	<a href="#">9200670000</a>
Type	LID 1,5M4 R
GTIN (EAN)	4032248410514
Qty.	100 pc(s).

**LID 1,5M4 R****Weidmüller Interface GmbH & Co. KG**

Klingenbergstraße 26

D-32758 Detmold

Germany

[www.weidmueller.com](http://www.weidmueller.com)**Technical data****Dimensions and weights**

Depth	5.7 mm	Depth (inches)	0.224 inch
Width	20.8 mm	Width (inches)	0.819 inch
Net weight	0.7 g		

**Technical data**

Description of article	Circular plug with copper sleeve 0.5 - 1.5 mm <sup>2</sup>
------------------------	--

**Connectors**

Conductor cross-section, max.	1.5 mm <sup>2</sup>	Conductor cross-section, min.	0.5 mm <sup>2</sup>
Dimension	ø 4 mm	Dimension (round plug)	ø 4 mm
Identification colour	red	Insulation	Available
Material/plastic	PVC	Outside diameter (d)	4 mm
Plastic collar diameter (D)	4 mm	Plastic collar length (b)	10 mm

**Classifications**

ETIM 6.0	EC001059	ETIM 7.0	EC001059
ETIM 8.0	EC001059	ETIM 9.0	EC001059
ECLASS 9.0	27-40-02-12	ECLASS 9.1	27-40-02-12
ECLASS 10.0	27-40-02-12	ECLASS 11.0	27-40-02-12
ECLASS 12.0	27-40-02-12	ECLASS 13.0	27-40-02-12

**Approvals**

ROHS	Conform
------	---------

**Downloads**

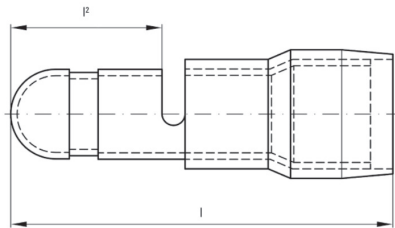
Catalogues	<a href="#">Catalogues in PDF-format</a>
Brochures	

## LID 1,5M4 R

**Weidmüller Interface GmbH & Co. KG**  
Klingenbergstraße 26  
D-32758 Detmold  
Germany

[www.weidmueller.com](http://www.weidmueller.com)

## Drawings



## LID 1,5M4 R

**Weidmüller Interface GmbH & Co. KG**  
Klingenbergstraße 26  
D-32758 Detmold  
Germany

[www.weidmueller.com](http://www.weidmueller.com)

## Accessories

## Crimping tools

**Crimping tools for insulated connectors**

cable lugs, terminal pins, parallel and serial connectors, plug-in connectors

- Ratchet guarantees precise crimping
- Release option in the event of incorrect operation
- With stop for exact positioning of the contacts.
- Tested to DIN EN 60352 part 2

## General ordering data

Type	CTI 6 G	Version
Order No.	<a href="#">9202850000</a>	Pressing tool, Tool for insulated cable connectors, 0.5mm <sup>2</sup> , 6mm <sup>2</sup> ,
GTIN (EAN)	4032248517855	Oval crimping, Parallel crimp
Qty.	1 pc(s).	
Type	CTI 6	Version
Order No.	<a href="#">9006120000</a>	Pressing tool, Crimping tool for contacts, 0.5mm <sup>2</sup> , 6mm <sup>2</sup> , Oval
GTIN (EAN)	4008190044527	crimping, Double crimp
Qty.	1 pc(s).	
Type	HTI 15	Version
Order No.	<a href="#">9014400000</a>	Pressing tool, Tool for insulated cable connectors, 0.5mm <sup>2</sup> , 2.5mm <sup>2</sup> ,
GTIN (EAN)	4008190159412	Double crimp
Qty.	1 pc(s).	