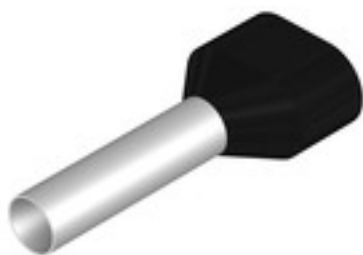


H6,0/29 ZH SW**Weidmüller Interface GmbH & Co. KG**

Klingenbergstraße 26

D-32758 Detmold

Germany

www.weidmueller.com

- supplied loose in poly-bag
- Weidmüller colour code
- DIN colour code
- other colour code

General ordering data

Version	Wire-end ferrule, Twin wire-end ferrule, 24 mm, 18 mm, black
Order No.	9037330000
Type	H6,0/29 ZH SW
GTIN (EAN)	4008190492809
Qty.	100 pc(s).
Packaging	loose

H6,0/29 ZH SW

Weidmüller Interface GmbH & Co. KG

Klingenbergstraße 26

D-32758 Detmold

Germany

www.weidmueller.com

Technical data

Dimensions and weights

Net weight	0.76 g
------------	--------

Technical data

Description of article	Twin wire end ferrule, black	Version	Twin wire-end ferrule
------------------------	------------------------------	---------	-----------------------

Wire-end ferrules

Collar height (A)	11.4 mm	Collar width (B)	6.2 mm
Colour code	Weidmueller	Conductor cross-section	6 mm ²
Contact surface diameter (D1)	4.5 mm	Contact surface length (L2)	18 mm
L1 in mm	29 mm	Metal sleeve thickness (S1)	0.2 mm
Plastic collar thickness (S2)	0.5 mm	Stripping length	24 mm
Wire connection cross section AWG, max.	AWG 10		

Classifications

ETIM 6.0	EC000005	ETIM 7.0	EC000005
ETIM 8.0	EC000005	ETIM 9.0	EC000005
ECLASS 9.0	27-40-02-01	ECLASS 9.1	27-40-02-01
ECLASS 10.0	27-40-02-01	ECLASS 11.0	27-40-02-01
ECLASS 12.0	27-40-02-01	ECLASS 13.0	27-40-02-01

Approvals

Approvals



ROHS	Conform
UL File Number Search	UL Website
Certificate no. (cULus)	E499744

Downloads

Engineering Data	CAD data – STEP
Engineering Data	Zuken E3.S
User Documentation	Technical information - EN Technical information - DE
Catalogues	Catalogues in PDF-format
Brochures	

H6,0/29 ZH SW**Weidmüller Interface GmbH & Co. KG**

Klingenbergstraße 26

D-32758 Detmold

Germany

www.weidmueller.com**Drawings****Drawing**