

ACT20X-2HTI-2SAO-S**Weidmüller Interface GmbH & Co. KG**

Klingenbergstraße 26

D-32758 Detmold

Germany

www.weidmueller.com

Product image

The ACT20X-HTI-SAO / 2HTI-2SAO temperature transducers record temperatures from PT100 sensors and thermocouples from Ex zone 0. Current loops from 0(4) to 20 mA can also be connected on the input side.

On the output side, there are active and passive current loops available for the safe zone.

Integrated alarm contacts issue an alert in the event of a malfunction; this makes troubleshooting easier and increases system availability.

The rail-mounted current output isolators are optionally available in one- or two-channel versions.

With 11 mm width per channel, the devices need little space in the electrical cabinet.

General ordering data

Version	EX signal isolating converter, Ex-input: I, 9, Safe-output: 4-20mA, 2-channel
Order No.	8965480000
Type	ACT20X-2HTI-2SAO-S
GTIN (EAN)	4032248785094
Qty.	1 pc(s).

ACT20X-2HTI-2SAO-S**Weidmüller Interface GmbH & Co. KG**

Klingenbergstraße 26

D-32758 Detmold

Germany

www.weidmueller.com

Technical data**Dimensions and weights**

Depth	113.6 mm	Depth (inches)	4.472 inch
Height	119.2 mm	Height (inches)	4.693 inch
Width	22.5 mm	Width (inches)	0.886 inch
Net weight	180 g		

Temperatures

Storage temperature	-20 °C...85 °C	Operating temperature	-20 °C...60 °C
Humidity	0...95 % (no condensation)		

Probability of failure

SIL PAPER	SIL certificate	SIL in compliance with IEC 61508	2
MTBF	111 a		

Assembling

Mounting position	horizontal or vertical	Rail	TS 35
Type of mounting	Snap mounting support rail		

Input EX

Input current	0...20 mA, 4...20mA	Input resistance, current	20 Ω + PTC 50 Ω
Line resistance in measuring circuit		Sensor	2-/3-/4-wire, RTD: PT10, PT20, PT50, PT100, PT250, PT300, PT400, PT500, PT1000, Ni50, Ni100, Ni120, Ni1000, Thermocouples: B, E, J, K, N, R, S, T ; in compliance with IEC 60584-1 and L, U in compliance with DIN43710
	≤ 50 Ω		
Temperature input range	Configurable, PT100: -200...+850 °C, PT200: -200...+850 °C, PT1000: -200...+850 °C, Ni100: -60°C...+250 °C, Ni120: -80 °C...+320 °C, Ni1000: -60°C...+250 °C, B: +100...+1820 °C, E: (-100...+1000 °C), J: (-100...+1200 °C), K: (-180...+1372 °C), L: (-200...+900 °C), N: (-180...+1300 °C), R: (-50...+1760 °C), S: (-50...+1760 °C), T: (-200...+400 °C), U: (-200...+600 °C), W3: (0...+2300 °C), W5: (0...+2300 °C), LR: (-200...+800 °C)	Type	intrinsically safe circuit, RTD, TC, DC (mA)

ACT20X-2HTI-2SAO-S

Weidmüller Interface GmbH & Co. KG

Klingenbergstraße 26

D-32758 Detmold

Germany

www.weidmueller.com

Technical data

Output

Influence of load resistance	$\leq 0.01\%$ of span / 100 Ω	Load impedance current	$\leq 600 \Omega$
Output current	0...23 mA, configurable: 0...20 / 4...20 / 20...0 / 20...4 mA, configurable downscale (3.5 mA) / up- scale (23 mA) @ error	Output signal limit	3.8...20.5 mA / 0...20.5 mA (dependent on range)
Type	active (as current source) or passive (as current sink)		

Alarm output

Alarm function	Line interruption at the in- put, Short circuit at input, No supply voltage, Device error	Continuous current	$\leq 0.5 \text{ A AC} / 0.3 \text{ A DC}$ (safe zone), $\leq 0.5 \text{ A AC} / 1$ A DC (zone 2)
Nominal switching voltage	$\leq 125 \text{ V AC} / 110 \text{ V DC}$ (safe area) $\leq 32 \text{ V AC} / 32 \text{ V DC}$ (zone 2)	Power rating	$\leq 62.5 \text{ VA} / 32 \text{ W}$ (safe area) $\leq 16 \text{ VA} / 32 \text{ W}$ (Zone 2)
Type	Status relay, 1 NC (volt- age-free)		

General specifications

Configuration	With FDT/DTM software, Requires configuration adapter 8978580000 CBX200 USB	Humidity	0...95 % (no condensation)
Power consumption	$\leq 1.4 \text{ W}$	Protection degree	IP20
Step response time	$\leq 400 \text{ ms}$ (with current), \leq 1 s (with temperature)	Type of connection	Screw connection
Voltage supply	19.2...31.2 V DC		

Insulation coordination

EMC standards	EN 61326-1	Insulation voltage	2.6 kV (input / output)
Rated voltage	300 V	Standards	EN 61010-1

Data for Ex applications (ATEX)

Current I_0	18.4 mA	Installation location	Device installed in safe area, zone 2
Marking	II (1) G [Ex ia Ga] IIC/IIB/ IIA, II (1) D [Ex ia Da] IIIC, I (M1) [Ex ia Ma] I	Power P_0	40 mW
Voltage U_0	8.7 V DC		

ACT20X-2HTI-2SAO-S

Weidmüller Interface GmbH & Co. KG

Klingenbergstraße 26

D-32758 Detmold

Germany

www.weidmueller.com

Technical data

Safety-related basic specifications

Description of the "safe state"	analogue Output $\leq 3.6 \text{ mA}$ or output $\geq 21 \text{ mA}$	Device type	B
Diagnostic test interval	30 s	T_{proof}	3 a
Total failure rate for safe detected failures (λ_{SD})	0 FIT	Hardware fault tolerance (HFT)	0
Safety category	SIL 2	Safe Failure Fraction (SFF)	90 %
Mean Time To Repair (MTTR)	24 h	Total failure rate for safe undetected failures (λ_{SU})	234 FIT
Total failure rate for dangerous detected failures (λ_{DD})	367 FIT	Total failure rate for dangerous undetected failures (λ_{DU})	61 FIT
Probability of outage PFH	$6.1 \times 10^{-8} \text{ h}^{-1}$	Demand mode	High
Demand rate	3,000 s	Demand response time	Signal input: $<0.5 \text{ s}$ (opto output), Temperature input: $<1.1 \text{ s}$ (opto output)

Safety-related specifications Low demand mode

Average Probability of Failure on Demand (PFD_{avg})	3.96×10^{-4} ($T_{\text{proof}} = 1$ year), 6.5×10^{-4} ($T_{\text{proof}} = 2$ years), 1.41×10^{-4} ($T_{\text{proof}} = 5$ years)
--	---

Connection data

Type of connection	Screw connection	Tightening torque, min.	0.4 Nm
Tightening torque, max.	0.6 Nm	Clamping range, rated connection	2.5 mm ²
Clamping range, min.	0.25 mm ²	Clamping range, max.	2.5 mm ²
Wire connection cross section AWG, min.	AWG 26	Wire connection cross section AWG, max.	AWG 12

Guarantee

Time interval	3 years
---------------	---------

Classifications

ETIM 6.0	EC002919	ETIM 7.0	EC002919
ETIM 8.0	EC002919	ETIM 9.0	EC002919
ECLASS 9.0	27-21-01-29	ECLASS 9.1	27-21-01-29
ECLASS 10.0	27-21-01-29	ECLASS 11.0	27-21-01-29
ECLASS 12.0	27-21-01-29	ECLASS 13.0	27-21-01-29

ACT20X-2HTI-2SAO-S

Weidmüller Interface GmbH & Co. KG
Klingenbergstraße 26
D-32758 Detmold
Germany

www.weidmueller.com

Technical data

Tender specification sheets

Long specification

Short specification

Ex temperature transducer for RTD-/ TC temperature signals and DC current signals, 2-channel
2-channel temperature transducer in 22.5 mm width with external power supply, for capturing and isolating RTD- / TC sensors and DC current signals 0(4)...20 mA from the Ex Zones 0, 1, 2. The outputs can be operated as either an active 0(4)...20 mA signal or as a passive 4...20 mA current loop.
Status and error messages are available via a relay contact (NO). The component can be configured using standard FDT/DTM software.
Add-on housing for TS35 rail mounting
Dimensions: L/W/H
119.2/ 22.5/ 113.6
Screw connection/ Nominal cross-section
2.5 mm²
Protection degree: IP 20
Input / channel RTD: PT100, PT500, PT1000, Ni100, Ni120, Ni1000
TC- Type: B, E, J, K, N, R, S, T, U, L

0(4)...20 mA
Output / channel active
0(4)...20 mA / 20...4 mA configurable
passive 4...20 mA current loop 3.5...26 V DC
Load / channel < 600 Ohm
Accuracy < 0,1 % v.E.
Temperature coefficient < 0,01% v.E./°C (Tu)
Alarm output relay 1 NO contact
250 V AC / 30 V DC @ 2A safe zone
32 V AC @ 0.5 A/ 32 VDC @ 1 A Zone 2
Ex-All in power
19...31.2 V DC
Power loss approx. 0 W
Ambient

ACT20X-2HTI-2SAO-S**Weidmüller Interface GmbH & Co. KG**

Klingenbergstraße 26

D-32758 Detmold

Germany

www.weidmueller.com

Technical data**Environmental Product Compliance**

REACH SVHC	Lead 7439-92-1
SCIP	2f6dd957-421a-46db-a0c2-cf1609156924

Approvals

Approvals



Approvals	DNVGL;
ROHS	Conform
UL File Number Search	UL Website
Certificate no. (cULus)	E337701

Downloads

Approval/Certificate/Document of Conformity	Certification SIL Certification DNV GL Application notes – Certification ATEX Application notes – Certification IECEX Application notes – Certification UL Declaration of Conformity
Engineering Data	CAD data – STEP
Software	WI-Manager, DTM-Library for online installation Release notes for Weidmueller FDT-DTM Software version
User Documentation	Instruction sheet Safety Manual for SIL application Handbuch ACT20X- Serie, deutsch Manual ACT20X- series, english 20210120 Security Advisory - WI-Manager affected by MundM Software fdtCONTAINER vulnerability
Catalogues	Catalogues in PDF-format
Brochures	

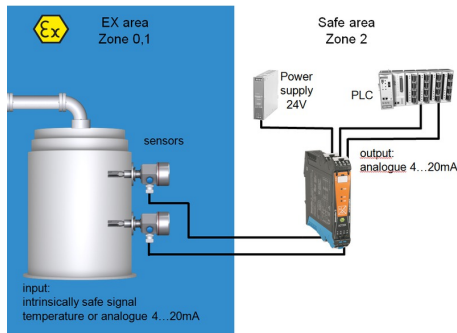
ACT20X-2HTI-2SAO-S

Weidmüller Interface GmbH & Co. KG
Klingenbergstraße 26
D-32758 Detmold
Germany

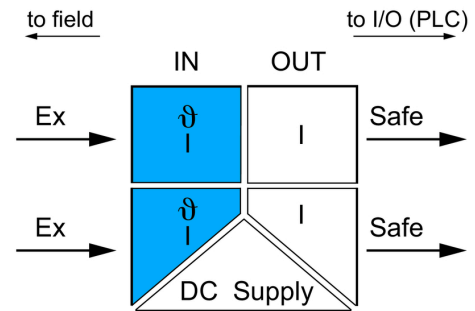
www.weidmueller.com

Drawings

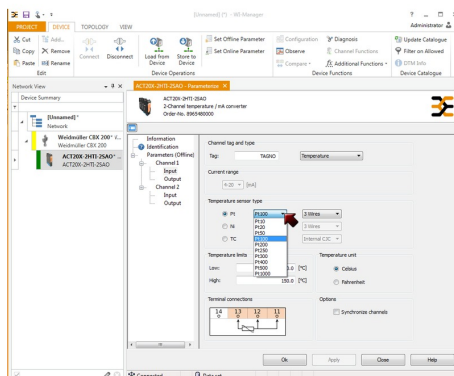
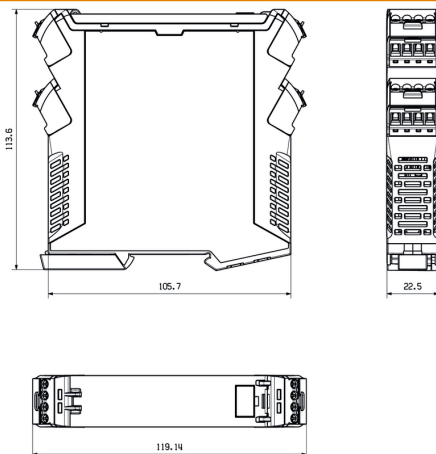
Application



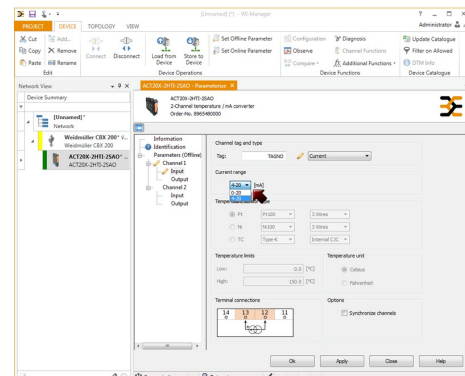
Block diagram



Dimensioned drawing



screenshot of temperature configuration
with FDT2 / DTM software



screenshot of current configuration
with FDT2 / DTM software

ACT20X-2HTI-2SAO-S**Weidmüller Interface GmbH & Co. KG**

Klingenbergstraße 26

D-32758 Detmold

Germany

www.weidmueller.com**Accessories****Configuration interfaces****General ordering data**

Type	CBX200 USB
Order No.	8978580000
GTIN (EAN)	4032248813759
Qty.	1 pc(s).

Cold-junction compensation terminals**General ordering data**

Type	ACT20X-CJC-HTI-S PRT 21	Version
Order No.	1160650000	(CJC) cold-junction compensation terminal for ACT20X thermal module, built-in PT100 sensor, Labelling for channel 2 (21, 22, 23, 24)
GTIN (EAN)	4032248948352	
Qty.	1 pc(s).	
Type	ACT20X-CJC-HTI-S PRT 11	Version
Order No.	1160640000	(CJC) cold-junction compensation terminal for ACT20X thermal module, built-in PT100 sensor, Labelling for channel 1 (11, 12, 13, 14)
GTIN (EAN)	4032248948345	
Qty.	1 pc(s).	

ACT20X-2HTI-2SAO-S**Weidmüller Interface GmbH & Co. KG**

Klingenbergstraße 26

D-32758 Detmold

Germany

www.weidmueller.com**Accessories****Blank**

ESG is the tried-and-tested marker in MultiCard format for use on many well-known electrical devices. The result is high-quality device marking with a high-contrast appearance.

Various types are available for devices from manufacturers like Siemens, ABB, Beckhoff etc.

Advantages at a glance:

- Tags for universal usage, self-adhesive or clip-on tags, depending on type
- For aligned equipment, e.g. circuit breakers, we supply ESG markers for clipping onto tag rails
- Individual laser-quality printing according to specifications

For custom printing: Please send us a file of our labeling software M-Print PRO or M-Print PRO Online (without installation) for your labeling specifications.

General ordering data

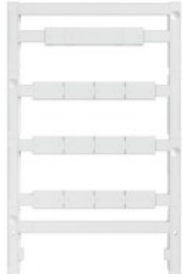
Type	ESG 6.6/20 BHZ 5.00/04	Version
Order No.	1082540000	ESG, Device markers x 20 mm, PA 66, Colour: white
GTIN (EAN)	4032248845439	
Qty.	200 pc(s).	

ACT20X-2HTI-2SAO-S**Weidmüller Interface GmbH & Co. KG**

Klingenbergstraße 26

D-32758 Detmold

Germany

www.weidmueller.com**Accessories****Blank**

ESG is the tried-and-tested marker in MultiCard format for use on many well-known electrical devices. The result is high-quality device marking with a high-contrast appearance.

Various types are available for devices from manufacturers like Siemens, ABB, Beckhoff etc.

Advantages at a glance:

- Tags for universal usage, self-adhesive or clip-on tags, depending on type
- For aligned equipment, e.g. circuit breakers, we supply ESG markers for clipping onto tag rails
- Individual laser-quality printing according to specifications

For custom printing: Please send us a file of our labeling software M-Print PRO or M-Print PRO Online (without installation) for your labeling specifications.

General ordering data

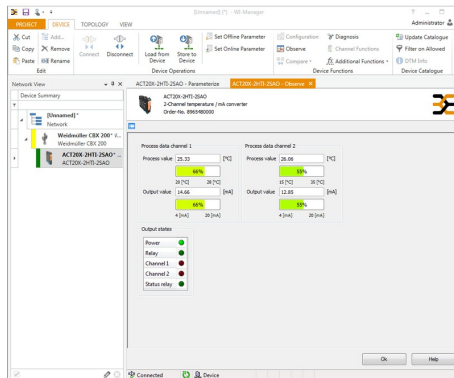
Type	ESG 8/13.5/43.3 SAI AU	Version
Order No.	1912130000	ESG, Device markers x 13.5 mm, PA 66, Colour: Transparent
GTIN (EAN)	4032248541164	
Qty.	5 pc(s).	

ACT20X-2HTI-2SAO-S

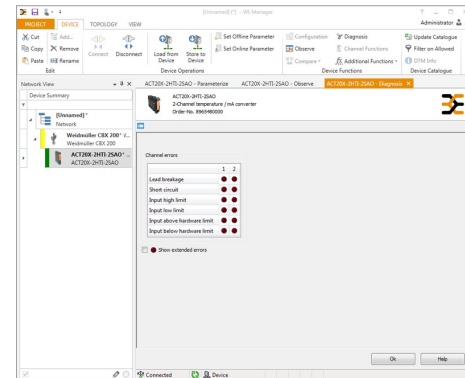
Weidmüller Interface GmbH & Co. KG
 Klingenbergstraße 26
 D-32758 Detmold
 Germany

www.weidmueller.com

Drawings



screenshot of "observe" with FDT2 / DTM software



screenshot of "diagnosis" with FDT2 / DTM software

Connection diagram

