

ACT20X-2HAI-2SAO-S**Weidmüller Interface GmbH & Co. KG**

Klingenbergstraße 26

D-32758 Detmold

Germany

www.weidmueller.com**Product image, Similar to illustration**

The ACT20X-HAI-SAO/2HAI-2SAO HART-protocol transparent current-supply isolators are capable of transmitting 4...20 mA signals from Ex zone 0 into the safe zone.

External sensors can be supplied with power through the device.

Integrated alarm contacts issue an alert in the event of a malfunction; this makes troubleshooting easier and increases system availability.

The rail mounted current-supply isolators are optionally available in one- or two-channel versions.

With 11 mm width per channel, the devices need little space in the electrical cabinet.

General ordering data

Version	EX signal isolating converter, Ex-input: 4 - 20 mA, Safe-output: 4-20mA, 2-channel
Order No.	8965440000
Type	ACT20X-2HAI-2SAO-S
GTIN (EAN)	4032248785056
Qty.	1 pc(s).

ACT20X-2HAI-2SAO-S**Weidmüller Interface GmbH & Co. KG**

Klingenbergstraße 26

D-32758 Detmold

Germany

www.weidmueller.com

Technical data**Dimensions and weights**

Depth	113.6 mm	Depth (inches)	4.472 inch
Height	119.2 mm	Height (inches)	4.693 inch
Width	22.5 mm	Width (inches)	0.886 inch
Net weight	212 g		

Temperatures

Storage temperature	-20 °C...85 °C	Operating temperature	-20 °C...60 °C
Humidity	0...95 % (no condensation)		

Probability of failure

SIL PAPER	SIL certificate	SIL in compliance with IEC 61508	2
MTBF	315 a		

Assembling

Mounting position	horizontal or vertical	Rail	TS 35
Type of mounting	Snap mounting support rail		

Input EX

Input current	4...20 mA	Output signal in case of wire break	<1 mA
Residual ripple (current loop)	<7.5 mV _{eff}	Sensor supply	> 16 V DC
Type	intrinsically safe circuit, active (as current source) or passive (as current sink)	Voltage drop not powered	<6 V
Voltage drop powered	<4.5 V		

Output

Load impedance current	≤ 600 Ω	Load stability	≤ 0.01 % of end value / 100 Ω
Output current	4...20 mA	Output signal limit	<28 mA
Type	active (as current source) or passive (as current sink)		

Alarm output

Alarm function	Signal limit exceeded, Line interruption at the input, No supply voltage, Device error	Continuous current	≤ 0.5 A AC / 0.3 A DC (safe zone), ≤ 0.5 A AC / 1 A DC (zone 2)
Nominal switching voltage	≤ 125 V AC / 110 V DC (safe area) ≤ 32 V AC / 32 V DC (zone 2)	Power rating	≤ 62.5 VA / 32 W (safe area) ≤ 16 VA / 32 W (Zone 2)
Type	Status relay, 1 NC (voltage-free)		

ACT20X-2HAI-2SAO-S

Weidmüller Interface GmbH & Co. KG

Klingenbergstraße 26

D-32758 Detmold

Germany

www.weidmueller.com

Technical data

General specifications

Accuracy	<0.1% span	Configuration	With FDT/DTM software, Requires configuration adapter 8978580000 CBX200 USB
Humidity	0...95 % (no condensation)	Power consumption	≤ 1.9 W
Protection degree	IP20	Step response time	≤ 5 ms
Temperature coefficient	<0.01% of span/°C (TU)	Type of connection	Screw connection
Voltage supply	19.2...31.2 V DC		

Insulation coordination

EMC standards	EN 61326-1	Insulation voltage	2.6 kV (input / output)
Pollution severity	2	Rated voltage	300 V
Standards	EN 61010-1	Surge voltage category	II

Data for Ex applications (ATEX)

Current I ₀	Current loop 93 mA / externally 10 mA	Installation location	Device installed in safe area, zone 2
Marking	II (1) G [Ex ia Ga] IIC/IIB/IIA, II (1) D [Ex ia Da] IIIC, I (M1) [Ex ia Ma] I	Power P ₀	Current loop 0.65 W / externally 0.1 W
Voltage U ₀	Current loop 28 V / externally 10 V		

Safety-related basic specifications

Description of the "safe state"	analogue Output ≤ 3.6 mA or output ≥ 21 mA	Device type	A
T _{proof}	5 a	Total failure rate for safe detected failures (λ _{SD})	0 FIT
Hardware fault tolerance (HFT)	0	Safety category	SIL 2, SIL 3 on use of 2 devices with special wiring
Safe Failure Fraction (SFF)	80 %	Mean Time To Repair (MTTR)	24 h
Total failure rate for safe undetected failures (λ _{SU})	0 FIT	Total failure rate for dangerous detected failures (λ _{DD})	173 FIT
Total failure rate for dangerous undetected failures (λ _{DU})	41 FIT	Probability of outage PFH	4.1 x 10 ⁻⁸ h ⁻¹
Demand mode	High		

Safety-related specifications Low demand mode

Average Probability of Failure on Demand (PFD _{avg})	1.92 x 10 ⁻⁴ (T _{proof} = 1 year), 3.67 x 10 ⁻⁴ (T _{proof} = 2 years), 8.92 x 10 ⁻⁴ (T _{proof} = 5 years), additional data in the safety manual
--	---

Connection data

Type of connection	Screw connection	Tightening torque, min.	0.4 Nm
Tightening torque, max.	0.6 Nm	Clamping range, rated connection	2.5 mm ²
Clamping range, min.	0.25 mm ²	Clamping range, max.	2.5 mm ²
Wire connection cross section AWG, min.	AWG 26	Wire connection cross section AWG, max.	AWG 12

ACT20X-2HAI-2SAO-S**Weidmüller Interface GmbH & Co. KG**

Klingenbergstraße 26

D-32758 Detmold

Germany

www.weidmueller.com**Technical data****Guarantee**

Time interval	3 years
---------------	---------

Classifications

ETIM 6.0	EC002653	ETIM 7.0	EC002653
ETIM 8.0	EC002653	ETIM 9.0	EC002653
ECLASS 9.0	27-21-01-20	ECLASS 9.1	27-21-01-20
ECLASS 10.0	27-21-01-20	ECLASS 11.0	27-21-01-20
ECLASS 12.0	27-21-01-20	ECLASS 13.0	27-21-01-20

ACT20X-2HAI-2SAO-S

Weidmüller Interface GmbH & Co. KG
Klingenbergstraße 26
D-32758 Detmold
Germany

www.weidmueller.com

Technical data

Tender specification sheets

Long specification

Ex supply isolator for standard DC current signals, 2-channel, HART transparent 2-channel supply isolator in 22.5 mm width with external power supply, for transmitting and isolating 4...20 mA standard signals from Ex Zones 0,1,2 to the safe zones. This component has active and passive inputs. External sensors can be supplied with > 15 VDC. The 4...20 mA output circuit can be operated either passively or actively. Status and error messages are available via a relay contact (NO). The component can be configured using standard FDT/DTM software. Add-on housing for TS35 rail mounting Dimensions: L/W/H 119.2/ 22.5/ 113.6 Screw connection/ Nominal cross-section 2.5 mm² Protection degree: IP 20
Input 2 x 4...20 mA
Output > 15 V DC sensor supply
ac-
active 2 x 4...20 mA
passive 2 x 4...20 mA
current loop max. 26 V DC
Load < 600 Ohm
Accuracy < 0,1 % v.E
Temperature coefficient < 0,01% v.E./°C (Tu)
Alarm output relay 1 NO contact
V AC / 30 V DC @ 2A 250
safe zone 32 V
AC @ 0.5 A/ 32 VDC @ 1 A Zone 2
Auxiliary power 19...31.2 V DC
Power consumption approx. 3 W
Ambient temperature range -20 °C...+70 °C

Short specification

2

ACT20X-2HAI-2SAO-S**Weidmüller Interface GmbH & Co. KG**

Klingenbergstraße 26

D-32758 Detmold

Germany

www.weidmueller.com

Technical data**Environmental Product Compliance**

REACH SVHC	Lead 7439-92-1
SCIP	2f6dd957-421a-46db-a0c2-cf1609156924

Approvals

Approvals



Approvals	DNVGL;
ROHS	Conform
UL File Number Search	UL Website
Certificate no. (cULus)	E337701

Downloads

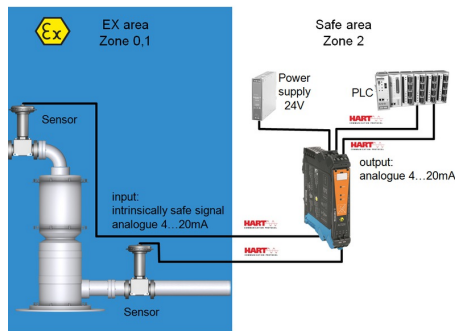
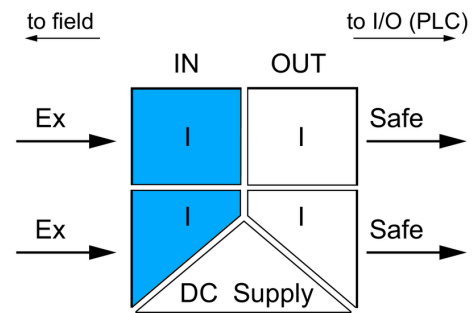
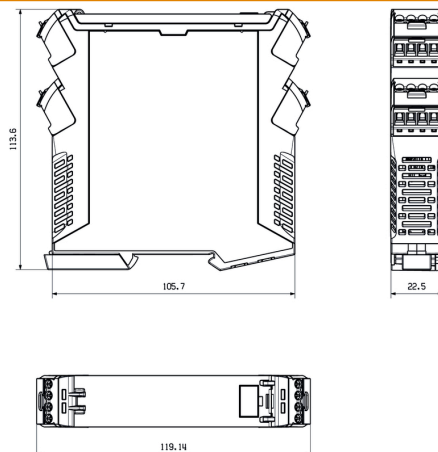
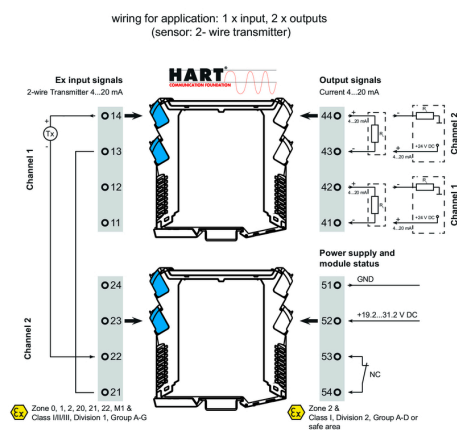
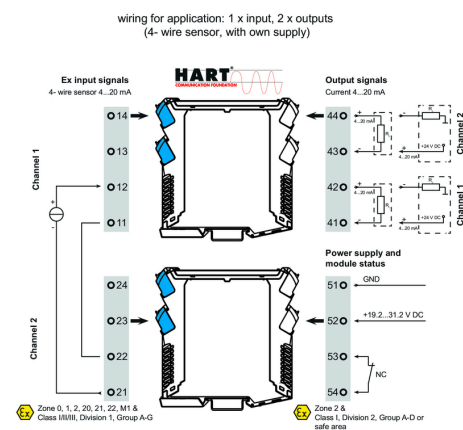
Approval/Certificate/Document of Conformity	Certification SIL Certification DNV GL Certification ATEX Certification IECEX Certification UL Declaration of Conformity
Engineering Data	CAD data – STEP
Software	WI-Manager, DTM-Library for online installation Release notes for Weidmueller FDT-DTM Software version
User Documentation	Instruction sheet Application notes – Safety Manual for SIL application Handbuch ACT20X- Serie, deutsch Manual ACT20X- series, english 20210120 Security Advisory - WI-Manager affected by MundM Software fdtCONTAINER vulnerability
Catalogues	Catalogues in PDF-format
Brochures	

ACT20X-2HAI-2SAO-S
Weidmüller Interface GmbH & Co. KG

Klingenbergstraße 26

D-32758 Detmold

Germany

www.weidmueller.com
Drawings
Application

Block diagram

Dimensioned drawing

Wiring example

Wiring example


ACT20X-2HAI-2SAO-S**Weidmüller Interface GmbH & Co. KG**

Klingenbergstraße 26

D-32758 Detmold

Germany

www.weidmueller.com**Accessories****Blank**

ESG is the tried-and-tested marker in MultiCard format for use on many well-known electrical devices. The result is high-quality device marking with a high-contrast appearance.

Various types are available for devices from manufacturers like Siemens, ABB, Beckhoff etc.

Advantages at a glance:

- Tags for universal usage, self-adhesive or clip-on tags, depending on type
- For aligned equipment, e.g. circuit breakers, we supply ESG markers for clipping onto tag rails
- Individual laser-quality printing according to specifications

For custom printing: Please send us a file of our labeling software M-Print PRO or M-Print PRO Online (without installation) for your labeling specifications.

General ordering data

Type	ESG 8/13.5/43.3 SAI AU	Version
Order No.	1912130000	ESG, Device markers x 13.5 mm, PA 66, Colour: Transparent
GTIN (EAN)	4032248541164	
Qty.	5 pc(s).	

ACT20X-2HAI-2SAO-S

Weidmüller Interface GmbH & Co. KG
 Klingenbergstraße 26
 D-32758 Detmold
 Germany

www.weidmueller.com

Accessories

Blank



ESG is the tried-and-tested marker in MultiCard format for use on many well-known electrical devices. The result is high-quality device marking with a high-contrast appearance.

Various types are available for devices from manufacturers like Siemens, ABB, Beckhoff etc. Advantages at a glance:

- Tags for universal usage, self-adhesive or clip-on tags, depending on type
- For aligned equipment, e.g. circuit breakers, we supply ESG markers for clipping onto tag rails
- Individual laser-quality printing according to specifications

For custom printing: Please send us a file of our labeling software M-Print PRO or M-Print PRO Online (without installation) for your labeling specifications.

General ordering data

Type	ESG 6.6/20 BHZ 5.00/04	Version
Order No.	1082540000	ESG, Device markers x 20 mm, PA 66, Colour: white
GTIN (EAN)	4032248845439	
Qty.	200 pc(s).	

Configuration interfaces



General ordering data

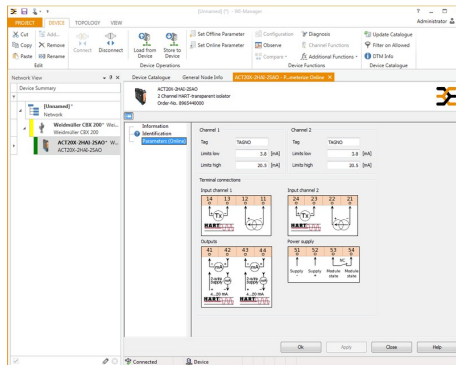
Type	CBX200 USB
Order No.	8978580000
GTIN (EAN)	4032248813759
Qty.	1 pc(s).

ACT20X-2HAI-2SAO-S

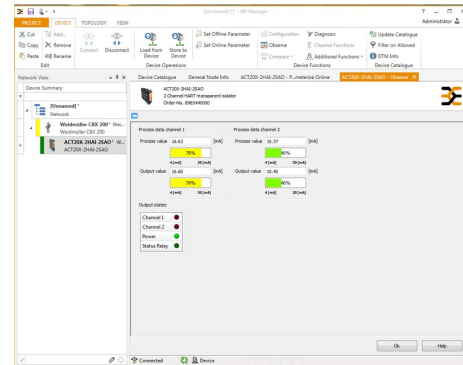
Weidmüller Interface GmbH & Co. KG
Klingenbergstraße 26
D-32758 Detmold
Germany

www.weidmueller.com

Drawings



screenshot of configuration with FDT2 /DTM software



screenshot of "observe" with FDT2 / DTM software

Connection diagram

