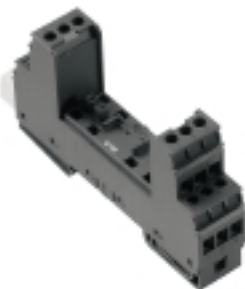


**VSPC BASE 2CL R****Weidmüller Interface GmbH & Co. KG**

Klingenbergstraße 26

D-32758 Detmold

Germany

[www.weidmueller.com](http://www.weidmueller.com)

Base element for the pluggable VSPC arrester, integrated PE foot in impedance-neutral VSPC BASE. Can safely discharge up to 20 kA (8/20  $\mu$ s) and 2.5 kA (10/350  $\mu$ s) to the PE.

**General ordering data**

|            |  |
|------------|--|
| Version    | Surge protection, Flange-mounted housing, Flange-mounted housing |
| Order No.  | <a href="#">8951710000</a>                                       |
| Type       | VSPC BASE 2CL R  |
| GTIN (EAN) | 4032248742950  |
| Qty.       | 1 pc(s).   |

## VSPC BASE 2CL R

Weidmüller Interface GmbH &amp; Co. KG

Klingenbergstraße 26

D-32758 Detmold

Germany

www.weidmueller.com

## Technical data

## Dimensions and weights

|            |         |                 |            |
|------------|---------|-----------------|------------|
| Depth      | 69 mm   | Depth (inches)  | 2.717 inch |
| Height     | 98 mm   | Height (inches) | 3.858 inch |
| Width      | 17.8 mm | Width (inches)  | 0.701 inch |
| Net weight | 63.74 g |                 |            |

## Temperatures

|                     |                |                       |             |
|---------------------|----------------|-----------------------|-------------|
| Storage temperature | -40 °C...80 °C | Operating temperature | -40 °C...70 |
| Humidity            | 5...96 %       |                       |             |

## Rated data UL

|                      |         |                |                     |
|----------------------|---------|----------------|---------------------|
| Certificate No. (UL) | E311081 | UL certificate | UL 497b Certificate |
|----------------------|---------|----------------|---------------------|

## Connection data, remote alert

|  |                     |  |                     |
|--|---------------------|--|---------------------|
| Connection type                                    | Screw connection    | Cross-section for connected wire, solid core, max. | 1.5 mm <sup>2</sup> |
| Cross-section for connected wire, solid core, min. | 0.5 mm <sup>2</sup> | Max. torque  | 0.2 Nm              |
| Stripping length                                   | 6 mm                |  |                     |

## CSA protection data

|  |      |                                    |        |
|--|------|------------------------------------|--------|
| Gas group C                              | IIB  | Gas group D                        | IIA    |
| Gas groups A, B                          | IIC  | Input current, max. I <sub>I</sub> | 450 mA |
| Internal inductance, max. L <sub>I</sub> | 0 µH |                                    |        |

## General data

|                           |                    |                   |                                    |
|---------------------------|--------------------|-------------------|------------------------------------|
| Colour                    | black              | Design            | Terminal, miscellaneous            |
| Optical function display  | No                 | Protection degree | IP20                               |
| Rail                      | TS 35, TS 35 x 7.5 | Segment           | Measurement - Monitoring - Setting |
| UL 94 flammability rating | V-0                | Version           | Flange-mounted housing             |

## Insulation coordination acc. to EN 50178

|                    |   |                        |     |
|--------------------|---|------------------------|-----|
| Pollution severity | 2 | Surge voltage category | III |
|--------------------|---|------------------------|-----|

## Rated data IEC / EN

|                              |  |                    |  |
|------------------------------|--|--------------------|--|
| Rated current I <sub>N</sub> | 450 mA   | Signalling contact | U <sub>N</sub> 250 V AC 0.1 A 1CO at VSPC R with VSPC control unit |
| Standards                    | IEC 61643-21, IEC 62305, DIN EN 60079-0:2009, DIN EN 60079-11:2007, DIN EN 60079-26:2007, DIN EN 61241-11:2006 | Voltage type       | AC/DC  |

## Further details of approvals

|                  |                 |
|------------------|-----------------|
| GOST certificate | GOST-Zertifikat |
|------------------|-----------------|

## VSPC BASE 2CL R

Weidmüller Interface GmbH &amp; Co. KG

Klingenbergstraße 26

D-32758 Detmold

Germany

www.weidmueller.com

## Technical data

## Connection data

|  |                     |  |                     |
|--|---------------------|--|---------------------|
| Stripping length   | 7 mm                | Type of connection   | Screw connection    |
| Stripping length, rated connection                         | 7 mm                | Tightening torque, min.                                    | 0.5 Nm              |
| Tightening torque, max.                                    | 0.8 Nm              | Clamping range, min.                                       | 0.5 mm <sup>2</sup> |
| Clamping range, max.                                       | 4 mm <sup>2</sup>   | Wire cross-section, solid, min.                            | 0.5 mm <sup>2</sup> |
| Wire cross-section, solid, max.                            | 4 mm <sup>2</sup>   | Wire connection cross section, finely stranded, max.       | 2.5 mm <sup>2</sup> |
| Conductor cross-section, flexible, AEH (DIN 46228-1), min. | 0.5 mm <sup>2</sup> | Conductor cross-section, flexible, AEH (DIN 46228-1), max. | 2.5 mm <sup>2</sup> |
| Connection cross-section, stranded, min.                   | 0.5 mm <sup>2</sup> | Connection cross-section, stranded, max.                   | 2.5 mm <sup>2</sup> |
| Blade size   | 0.6 x 3.5 mm        |  |                     |

## Ratings IECEx/ATEX/cUL

|                 |                 |
|-----------------|-----------------|
| cUL certificate | cUL Certificate |
|-----------------|-----------------|

## Classifications

|             |             |             |             |
|-------------|-------------|-------------|-------------|
| ETIM 6.0    | EC000472    | ETIM 7.0    | EC000472    |
| ETIM 8.0    | EC000472    | ETIM 9.0    | EC000472    |
| ECLASS 9.0  | 27-13-08-03 | ECLASS 9.1  | 27-13-08-07 |
| ECLASS 10.0 | 27-13-08-03 | ECLASS 11.0 | 27-13-08-03 |
| ECLASS 12.0 | 27-17-15-91 | ECLASS 13.0 | 27-17-15-91 |

## Tender specification sheets

|                    |   |                     |   |
|--------------------|---|---------------------|---|
| Long specification | Base element for two floating-ground powered paired cables. When the base unit is fitted, a simultaneous electrically conducting contact is made between the mounting rail (earth) and the reference potential (ground) of the protection circuit in the plug. Mechanical coding of the base element to the protected plug according to switching type and rated voltage. With optional remote monitoring. The base unit is coded itself by the first insertion of a protected plug. Possible to mark all terminals | Short specification | Base element receives a protected plug for two floating-ground powered paired cables with direct earthing. With optional remote monitoring. |
|--------------------|---|---------------------|---|

## Environmental Product Compliance

|            |                                      |
|------------|--------------------------------------|
| REACH SVHC | Lead 7439-92-1                       |
| SCIP       | 5047b468-d57a-4a1c-8363-2ff1629067e4 |

**VSPC BASE 2CL R****Weidmüller Interface GmbH & Co. KG**

Klingenbergstraße 26

D-32758 Detmold

Germany

[www.weidmueller.com](http://www.weidmueller.com)**Technical data****Approvals**

Approvals



ROHS Conform

UL File Number Search UL Website

Certificate No. (UL) E311081

**Downloads**Approval/Certificate/Document of Conformity [SIL Paper](#)  
[EU Konformitätserklärung / EU Declaration of Conformity](#)Engineering Data [CAD data – STEP](#)User Documentation [Beipackzettel / Instruction sheet](#)Catalogues [Catalogues in PDF-format](#)

Brochures

## VSPC BASE 2CL R

Weidmüller Interface GmbH &amp; Co. KG

Klingenbergstraße 26

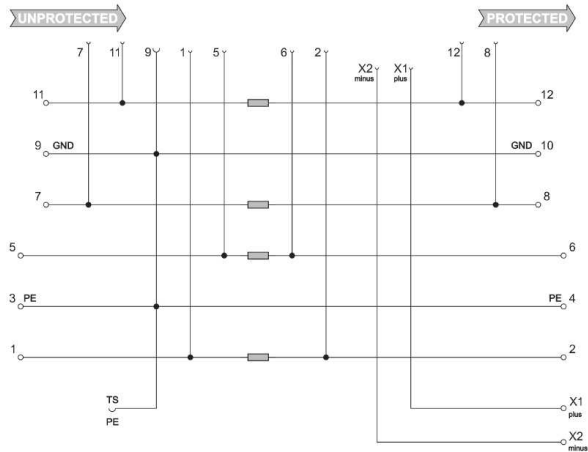
D-32758 Detmold

Germany

www.weidmueller.com

## Drawings

## Electric symbol



Circuit diagram

| Cate-<br>gory | Testing<br>pulse         | Surge<br>voltage                | Surge<br>current                 | Pulse<br>Type   |
|---------------|--------------------------|---------------------------------|----------------------------------|---|
| C1            | Quick-<br>rising<br>edge | 0.5 - 2 kV<br>with<br>1.2/50 µs | 0.25 - 1 kA<br>mit<br>8/20 µs    | 300<br>Surge<br>voltage<br>arrester                             |
| C2            | Quick-<br>rising<br>edge | 2 - 10 kV<br>with<br>1.2/50 µs  | 1 - 5 kA<br>mit<br>8/20 µs       | 10<br>Surge<br>voltage<br>arrester                              |
| C3            | Quick-<br>rising<br>edge | ≥ 1 kV<br>with<br>1 kV/µs       | 10 - 100 A<br>mit<br>10/10000 µs | 300<br>Surge<br>voltage<br>arrester                             |
| D1            | High<br>power            | ≥ 1 kV                          | 0.5 - 2.5 kA<br>mit 10/350<br>µs | 2<br>Arrester for<br>lightning<br>current and<br>surge voltages |

Discharge capacity

## VSPC BASE 2CL R

Weidmüller Interface GmbH &amp; Co. KG

Klingenbergstraße 26

D-32758 Detmold

Germany

www.weidmueller.com

## Accessories

## Slotted screwdriver



Slotted screwdriver with rounded blade SD DIN 5265, ISO 2380/2, output to DIN 5264, ISO 2380/1. ChromTop tip, SoftFinish grip

## General ordering data

|            |                            |                          |
|------------|----------------------------|--------------------------|
| Type       | SDS 0.4X2.0X60             | Version                  |
| Order No.  | <a href="#">9037160000</a> | Screwdriver, Screwdriver |
| GTIN (EAN) | 4032248171613              |                          |
| Qty.       | 1 pc(s).                   |                          |
| Type       | SDS 0.6X3.5X200            | Version                  |
| Order No.  | <a href="#">9010110000</a> | Screwdriver, Screwdriver |
| GTIN (EAN) | 4032248300754              |                          |
| Qty.       | 1 pc(s).                   |                          |

## Supply and alert unit for VSPC R arresters



- Signalling module for all VSPCs with status indicator
- Signalling of cable breaks / signal interruptions
- Power supply of 20 to 31 V DC
- No-voltage changeover contact
- Function display with red/green LED
- Functional alerts with different signal types.

## General ordering data

|            |                            |  |
|------------|----------------------------|--|
| Type       | VSPC CONTROL UNIT 24VDC    | Version  |
| Order No.  | <a href="#">8972270000</a> | Surge protection for instrumentation and control, with warning |
| GTIN (EAN) | 4032248793488              | function / function indicator                                  |
| Qty.       | 1 pc(s).                   |  |

## VSPC BASE 2CL R

Weidmüller Interface GmbH &amp; Co. KG

Klingenbergstraße 26

D-32758 Detmold

Germany

www.weidmueller.com

## Accessories

## Plus



The Dekafix (DEK) marker is the universal marker for all conductor and plug-in connectors as well as for electronic sub-assemblies. The system is ideal for short number sequences and covers a wide range of ready-printed markers.

Strips for fast installation in only one work step. The printing is easy to read, rich in contrast and available in various widths.

- Large range of ready-to-use markers
- Strips for fast installation
- Terminal markers, suitable for all Weidmüller cable connectors
- Available as blank MultiCard or with standard printing

**For custom printing:** Please send us a file of our labeling software M-Print PRO or M-Print PRO Online (without installation) for your labeling specifications.

## General ordering data

|            |                            |   |
|------------|----------------------------|---|
| Type       | DEK 5/5 PLUS MC NE WS      | Version   |
| Order No.  | <a href="#">1854490000</a> | Dekafix, Terminal marker, 5 x 5 mm, Pitch in mm (P): 5.00 |
| GTIN (EAN) | 4032248393596              | Weidmueller, white  |
| Qty.       | 1,000 pc(s).               |   |

## Earthing module



- Can be applied to unassigned wires
- Can be used during initial commissioning and maintenance
- All sensor cables connected to the VSPC are earthed.
- Can be plugged into all VSPC base sockets

## General ordering data

|            |                            |  |
|------------|----------------------------|--|
| Type       | VSPC GROUND                | Version  |
| Order No.  | <a href="#">8924680000</a> | Adapter, without warning function / function indicator |
| GTIN (EAN) | 4032248696321              |  |
| Qty.       | 1 pc(s).                   |  |