

IE-M12-PCBCE-PANEL**Weidmüller Interface GmbH & Co. KG**

Klingenbergstraße 26

D-32758 Detmold

Germany

www.weidmueller.com**General ordering data**

Version	PCB connection element M12, Solder connection, Cat.5 (ISO/IEC 11801), IP65 in acc. with DIN EN 60529
Order No.	8902820000
Type	IE-M12-PCBCE-PANEL
GTIN (EAN)	4032248658183
Qty.	10 pc(s).

IE-M12-PCBCE-PANEL

Weidmüller Interface GmbH & Co. KG

Klingenbergstraße 26

D-32758 Detmold

Germany

www.weidmueller.com

Technical data

Dimensions and weights

Net weight	11.6 g
------------	--------

Temperatures

Operating temperature	-25 °C...85 °C
-----------------------	----------------

Technical data of PCB plug-in connector

Coding	D-coded	Number of poles	4
Protection degree	IP65 in acc. with DIN EN 60529	Housing main material	CuZn, Polyamide, nickel-plated
Connection thread	M12		

General Info

Number of poles	4	Connection 1	M12
Connection 2	Solder connection	Description of article	Connecting element, clip-on
Configuration	Reflow compatible	Housing main material	CuZn, Polyamide, nickel-plated
Category	Cat.5 (ISO/IEC 11801)	Connection thread	M12
Shielding	360° shield contact	Protection degree	IP65 in acc. with DIN EN 60529

Classifications

ETIM 6.0	EC002638	ETIM 7.0	EC003568
ETIM 8.0	EC003568	ETIM 9.0	EC003568
ECLASS 9.0	27-44-03-09	ECLASS 9.1	27-44-03-09
ECLASS 10.0	27-44-03-09	ECLASS 11.0	27-44-01-10
ECLASS 12.0	27-44-01-10	ECLASS 13.0	27-44-01-10

Environmental Product Compliance

REACH SVHC	Lead 7439-92-1
SCIP	3e8ceb07-2a6e-42e7-9cfb-aa443d2916b3

Approvals

ROHS	Conform
------	---------

Downloads

Approval/Certificate/Document of Conformity	GOST Approval PROFINET Manufacturer's Declaration
Engineering Data	CAD data – STEP
Catalogues	Catalogues in PDF-format
Brochures	FL FIELDWIRING EN FL FIELDWIRING EN

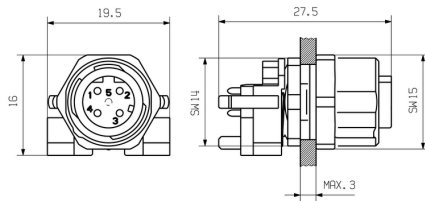
IE-M12-PCBCE-PANEL

Weidmüller Interface GmbH & Co. KG
Klingenbergstraße 26
D-32758 Detmold
Germany

www.weidmueller.com

Drawings

Dimensioned drawing



Dimensioned drawing

