

**RCM270S15****Weidmüller Interface GmbH & Co. KG**

Klingenbergstraße 26

D-32758 Detmold

Germany

[www.weidmueller.com](http://www.weidmueller.com)**Product image**

Similar to illustration

Individual relays within the RIDERSERIES RCM

- 2 CO contacts
- Optional AC or DC coils
- With test button and integrated status LED

**General ordering data**

|            |   |
|------------|---|
| Version    | RIDERSERIES RCM, Relay, Number of contacts: 2, CO contact AgNi, Rated control voltage: 115 V AC, Continuous current: 12 A, Plug-in connection, Test button available: Yes |
| Order No.  | <a href="#">8689810000</a>  |
| Type       | RCM270S15   |
| GTIN (EAN) | 4032248360482   |
| Qty.       | 10 pc(s).   |

## RCM270S15

Weidmüller Interface GmbH &amp; Co. KG

Klingenbergstraße 26

D-32758 Detmold

Germany

www.weidmueller.com

## Technical data

## Dimensions and weights

|            |         |                 |            |
|------------|---------|-----------------|------------|
| Depth      | 29 mm   | Depth (inches)  | 1.142 inch |
| Height     | 28 mm   | Height (inches) | 1.102 inch |
| Width      | 22.5 mm | Width (inches)  | 0.886 inch |
| Net weight | 28.7 g  |                 |            |

## Temperatures

|                     |  |                       |                |
|---------------------|--|-----------------------|----------------|
| Storage temperature | -40 °C...85 °C                                 | Operating temperature | -40 °C...70 °C |
| Humidity            | 40 °C / 93 % rel. humidity,<br>no condensation |                       |                |

## Rated data UL

|                         |         |
|-------------------------|---------|
| Certificate No. (cURus) | E522350 |
|-------------------------|---------|

## Control side

|                       |          |                  |                        |
|-----------------------|----------|------------------|------------------------|
| Rated control voltage | 115 V AC | Rated current AC | 9.2 mA                 |
| Power rating          | 1058 mVA | Coil resistance  | 4845 $\Omega \pm 12\%$ |
| Coil tolerance        | 12 %     | Status indicator | red LED                |

## Load side

|   |  |   |  |
|---|--|---|--|
| Rated switching voltage                 | 240 V AC   | Continuous current                      | 12 A                                       |
| Max. switching frequency at rated load  | 0.1 Hz   | Max. switching voltage, AC              | 250 V                                      |
| Inrush current                          | 24 A / 20 ms   | AC switching capacity (resistive), max. | 3000 VA                                    |
| DC switching capacity (resistive), max. | 288 W @ 24 V   | Switch-on delay                         | $\leq 15$ ms                               |
| Switch-off delay                        | $\leq 10$ ms   | Contact type                            | 2 CO contact (AgNi)                        |
| Mechanical service life                 | AC coil $20 \times 10^6$ switching<br>cycles, DC coil $30 \times 10^6$<br>switching cycles | Min. switching power                    | 1 mA @ 24 V, 10 mA @ 12<br>V, 100 mA @ 5 V |

## General data

|                                      |     |                        |  |
|--------------------------------------|-----|------------------------|--|
| Test button available                | Yes | Version of test button | Lockable test button, Mo-<br>mentary test button |
| Mechanical switch position indicator | Yes | Colour                 | Transparent                                      |
| UL 94 flammability rating            | V-2 |                        |  |

## Insulation coordination

|  |                                |   |                                |
|--|--------------------------------|---|--------------------------------|
| Rated voltage  | 250 V                          | Pollution severity                                  | 2                              |
| Surge voltage category   | III                            | Insulating material group                           | IIIa                           |
| Clearance and creepage distances for<br>control side - load side | $\geq 4$ mm                    | Dielectric strength for control side - load<br>side | 2.5 kV <sub>eff</sub> / 1 Min. |
| Dielectric strength of neighbouring con-<br>tacts                | 2.5 kV <sub>eff</sub> / 1 Min. | Dielectric strength of open contact                 | 1.2 kV <sub>eff</sub> / 1 min. |
| Impulse withstand voltage  | 5 kV (1.2/50 $\mu$ s)          | Protection degree                                   | IP20                           |

## Further details of approvals / standards

|                         |                |                       |          |
|-------------------------|----------------|-----------------------|----------|
| Certificate No. (CSA)   | 249409-2426937 | Certificate No. (VDE) | 40011762 |
| Certificate No. (cURus) | E522350        |                       |          |

## RCM270S15

Weidmüller Interface GmbH &amp; Co. KG

Klingenbergstraße 26

D-32758 Detmold

Germany

[www.weidmueller.com](http://www.weidmueller.com)

## Technical data

## Connection data

|                        |                    |
|------------------------|--------------------|
| Wire connection method | Plug-in connection |
|------------------------|--------------------|

## Classifications

|             |             |             |             |
|-------------|-------------|-------------|-------------|
| ETIM 6.0    | EC001437    | ETIM 7.0    | EC001437    |
| ETIM 8.0    | EC001437    | ETIM 9.0    | EC001437    |
| ECLASS 9.0  | 27-37-16-01 | ECLASS 9.1  | 27-37-16-01 |
| ECLASS 10.0 | 27-37-16-01 | ECLASS 11.0 | 27-37-16-01 |
| ECLASS 12.0 | 27-37-16-01 | ECLASS 13.0 | 27-37-16-01 |

## Approvals

Approvals



|                         |            |
|-------------------------|------------|
| ROHS                    | Conform    |
| UL File Number Search   | UL Website |
| Certificate No. (cURus) | E522350    |

## Downloads

|   |   |
|---|---|
| Approval/Certificate/Document of Conformity | <a href="#">EU Konformitätserklärung / EU Declaration of Conformity</a> |
| Engineering Data                            | <a href="#">CAD data – STEP</a>   |
| Catalogues                                  | <a href="#">Catalogues in PDF-format</a>                                |
| Brochures                                   |   |

## RCM270S15

Weidmüller Interface GmbH &amp; Co. KG

Klingenbergstraße 26

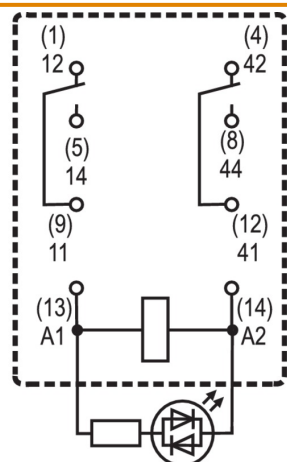
D-32758 Detmold

Germany

www.weidmueller.com

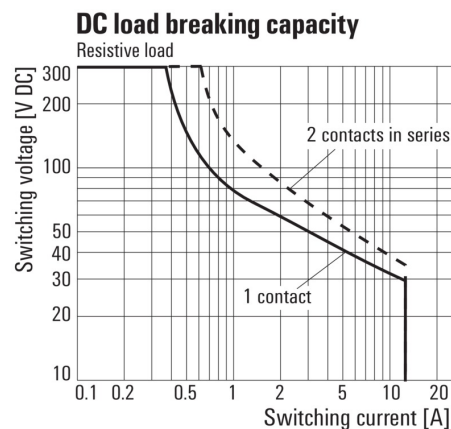
## Drawings

## Wiring diagram

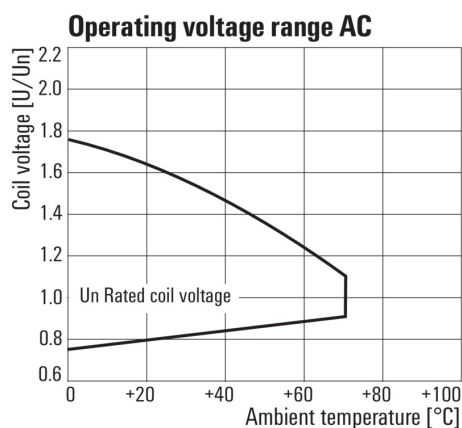


View of Pins from below

## Graph

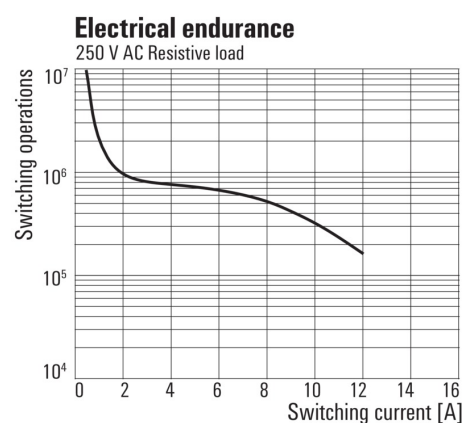
DC load limit curve  
Resistive load

## Graph

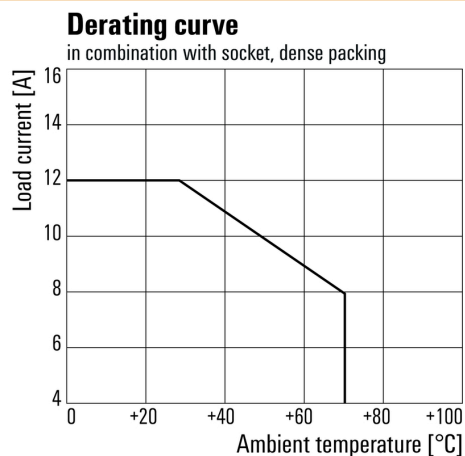


AC operational voltage range

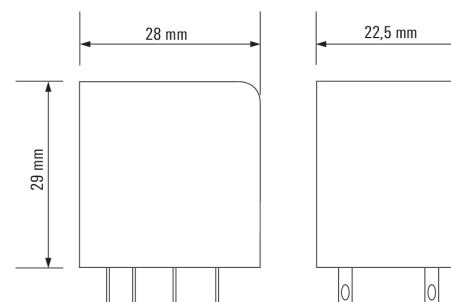
## Graph

Electrical service life  
250 V AC resistive load

## Graph

Derating curve  
Relay in combination with base

## Dimensional drawing



**RCM270S15****Weidmüller Interface GmbH & Co. KG**

Klingenbergstraße 26

D-32758 Detmold

Germany

[www.weidmueller.com](http://www.weidmueller.com)**Accessories****Cross-connection for socket with screw connection**

Cross-connection for the sockets in the RIDERSERIES RCM

**General ordering data**

|            |                            |                                  |
|------------|----------------------------|----------------------------------|
| Type       | SCM-I QV S                 | Version                          |
| Order No.  | <a href="#">1132080000</a> | RIDERSERIES RCM, Cross-connector |
| GTIN (EAN) | 4032248912193              |                                  |
| Qty.       | 10 pc(s).                  |                                  |

**Protective varistor**

Pluggable protective modules for the RIDERSERIES RCI / RCM relay sockets, with optional protective functions.

- With protective varistor
- For UC supply voltage

**General ordering data**

|            |                            |  |
|------------|----------------------------|--|
| Type       | RIM-I 4 110VUC VAR         | Version  |
| Order No.  | <a href="#">8869730000</a> | RIDERSERIES, Protective varistor, Rated control voltage: 110 V UC, |
| GTIN (EAN) | 4032248606351              | Plug-in connection   |
| Qty.       | 10 pc(s).                  |  |

## RCM270S15

Weidmüller Interface GmbH &amp; Co. KG

Klingenbergstraße 26

D-32758 Detmold

Germany

www.weidmueller.com

## Accessories

## Cross-connection for socket with PUSH IN connection



Cross-connection for the sockets in the RIDERSERIES RCM

## General ordering data

|            |                            |                                  |
|------------|----------------------------|----------------------------------|
| Type       | SCM-I QV P                 | Version                          |
| Order No.  | <a href="#">8870850000</a> | RIDERSERIES RCM, Cross-connector |
| GTIN (EAN) | 4032248631698              |                                  |
| Qty.       | 10 pc(s).                  |                                  |

## Blank



ESG is the tried-and-tested marker in MultiCard format for use on many well-known electrical devices. The result is high-quality device marking with a high-contrast appearance.

Various types are available for devices from manufacturers like Siemens, ABB, Beckhoff etc.

Advantages at a glance:

- Tags for universal usage, self-adhesive or clip-on tags, depending on type
- For aligned equipment, e.g. circuit breakers, we supply ESG markers for clipping onto tag rails
- Individual laser-quality printing according to specifications

**For custom printing:** Please send us a file of our labeling software M-Print PRO or M-Print PRO Online (without installation) for your labeling specifications.

## General ordering data

|            |                            |   |
|------------|----------------------------|---|
| Type       | ESG 9/26 SCM-I MC NE WS    | Version   |
| Order No.  | <a href="#">2558330000</a> | ESG, Device markers x 26 mm, PA 66, Colour: white |
| GTIN (EAN) | 4050118569049              |   |
| Qty.       | 80 pc(s).                  |   |

## RCM270S15

Weidmüller Interface GmbH &amp; Co. KG

Klingenbergstraße 26

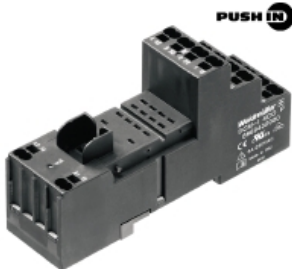
D-32758 Detmold

Germany

www.weidmueller.com

## Accessories

## Sockets



relays sockets for RIDERSERIES RCM relays

- 2, 3 and 4 CO contacts
- Screw and PUSH IN connection
- Standard and low heights

## General ordering data

|            |                            |   |
|------------|----------------------------|---|
| Type       | SCM-I 2CO                  | Version   |
| Order No.  | <a href="#">8869400000</a> | RIDERSERIES RCM, Relay socket, Number of contacts: 2, CO contact, |
| GTIN (EAN) | 4032248614264              | Continuous current: 12 A, Screw connection                        |
| Qty.       | 10 pc(s).                  |   |
| Type       | SCM-I 2CO P                | Version   |
| Order No.  | <a href="#">8876220000</a> | RIDERSERIES RCM, Relay socket, Number of contacts: 2, CO contact, |
| GTIN (EAN) | 4032248609031              | Continuous current: 12 A, PUSH IN                                 |
| Qty.       | 10 pc(s).                  |   |
| Type       | SCM-I 4CO N                | Version   |
| Order No.  | <a href="#">8869390000</a> | RIDERSERIES RCM, Relay socket, Number of contacts: 4, CO contact, |
| GTIN (EAN) | 4032248614257              | Continuous current: 6 A, Screw connection                         |
| Qty.       | 10 pc(s).                  |   |
| Type       | SCM-I 4CO                  | Version   |
| Order No.  | <a href="#">8869420000</a> | RIDERSERIES RCM, Relay socket, Number of contacts: 4, CO contact, |
| GTIN (EAN) | 4032248614271              | Continuous current: 6 A, Screw connection                         |
| Qty.       | 10 pc(s).                  |   |
| Type       | SCM-I 4CO P                | Version   |
| Order No.  | <a href="#">8869430000</a> | RIDERSERIES RCM, Relay socket, Number of contacts: 4, CO contact, |
| GTIN (EAN) | 4032248614288              | Continuous current: 6 A, PUSH IN                                  |
| Qty.       | 10 pc(s).                  |   |

## Protection module



Pluggable protective modules for the RIDERSERIES RCI / RCM relay sockets, with optional protective functions.

- Optional with free-wheeling diode, protective varistor, load resistor or RC filter

## General ordering data

|            |                            |  |
|------------|----------------------------|--|
| Type       | RIM-I 3 110/230VAC RC      | Version  |
| Order No.  | <a href="#">8869790000</a> | RIDERSERIES, RC filter, Rated control voltage: 110...230 V UC, Plug-in |
| GTIN (EAN) | 4032248606337              | connection   |
| Qty.       | 10 pc(s).                  |  |

## RCM270S15

Weidmüller Interface GmbH &amp; Co. KG

Klingenbergstraße 26

D-32758 Detmold

Germany

www.weidmueller.com

## Accessories

|            |                            |  |
|------------|----------------------------|--|
| Type       | RIM-I 1 R 110/230V         | Version  |
| Order No.  | <a href="#">8870830000</a> | RIDERSERIES, Load, Rated control voltage: 110...230 V UC, Plug-in connection |
| GTIN (EAN) | 4032248631674              |  |
| Qty.       | 10 pc(s).                  |  |

|            |                            |   |
|------------|----------------------------|---|
| Type       | RIM-I 1 6/230V             | Version   |
| Order No.  | <a href="#">8869580000</a> | RIDERSERIES, Free-wheeling diode, Rated control voltage: 6...230 V DC, Plug-in connection |
| GTIN (EAN) | 4032248614523              |   |
| Qty.       | 10 pc(s).                  |   |

## ESG 6/15

**Guaranteed long service life: ESG**

The multi-colour and multi-format labels have a strong adhesive layer to ensure the best possible adhesion to the underlying surface. Double laminated polyester makes the basic material very thin and yet extremely tear-resistant.

**Your benefits with MultiMark**

- "Different materials for various requirements"
- Can be used with equipment from many manufacturers
- Device markers with a familiar design

## General ordering data

|            |                            |                                       |
|------------|----------------------------|---------------------------------------|
| Type       | ESG 6/15 MM WS             | Version                               |
| Order No.  | <a href="#">2619940000</a> | ESG, Device markers, 6 x 15 mm, white |
| GTIN (EAN) | 4050118626148              |                                       |
| Qty.       | 3,000 pc(s).               |                                       |

## LED



Pluggable protective modules for the RIDERSERIES RCI / RCM relay sockets, with optional protective functions.

- Optional with green or red LED
- For UC supply voltage

## General ordering data

|            |                            |  |
|------------|----------------------------|--|
| Type       | RIM-I 3 110/230VUC GN      | Version  |
| Order No.  | <a href="#">8869660000</a> | RIDERSERIES, LED module, Rated control voltage: 110...230 V UC, Plug-in connection |
| GTIN (EAN) | 4032248614721              |  |
| Qty.       | 10 pc(s).                  |  |
| Type       | RIM-I 3 110/230VUC         | Version  |
| Order No.  | <a href="#">8869650000</a> | RIDERSERIES, LED module, Rated control voltage: 110...230 V UC, Plug-in connection |
| GTIN (EAN) | 4032248614592              |  |
| Qty.       | 10 pc(s).                  |  |



## RCM270S15

Weidmüller Interface GmbH &amp; Co. KG

Klingenbergstraße 26

D-32758 Detmold

Germany

www.weidmueller.com

## Accessories

## Retaining clips



Retaining clip for RIDERSERIES RCM relays

- Metal and plastic retaining clip

## General ordering data

|            |                            |                                 |
|------------|----------------------------|---------------------------------|
| Type       | SCM-I CLIP M               | Version                         |
| Order No.  | <a href="#">8869450000</a> | RIDERSERIES RCM, Retaining clip |
| GTIN (EAN) | 4032248614301              |                                 |
| Qty.       | 10 pc(s).                  |                                 |
| Type       | SCM-I CLIP P               | Version                         |
| Order No.  | <a href="#">8869440000</a> | RIDERSERIES RCM, Retaining clip |
| GTIN (EAN) | 4032248614295              |                                 |
| Qty.       | 10 pc(s).                  |                                 |
| Type       | SCM-I CLIP N               | Version                         |
| Order No.  | <a href="#">8875620000</a> | RIDERSERIES RCM, Retaining clip |
| GTIN (EAN) | 4032248608577              |                                 |
| Qty.       | 10 pc(s).                  |                                 |

## ESG 6/17

**Guaranteed long service life: ESG**

The multi-colour and multi-format labels have a strong adhesive layer to ensure the best possible adhesion to the underlying surface. Double laminated polyester makes the basic material very thin and yet extremely tear-resistant.

**Your benefits with MultiMark**

- "Different materials for various requirements"
- Can be used with equipment from many manufacturers
- Device markers with a familiar design

## General ordering data

|            |                            |                                       |
|------------|----------------------------|---------------------------------------|
| Type       | ESG 6/17 MM WS             | Version                               |
| Order No.  | <a href="#">2005100000</a> | ESG, Device markers, 6 x 17 mm, white |
| GTIN (EAN) | 4050118390728              |                                       |
| Qty.       | 3,000 pc(s).               |                                       |

## RCM270S15

Weidmüller Interface GmbH &amp; Co. KG

Klingenbergstraße 26

D-32758 Detmold

Germany

[www.weidmueller.com](http://www.weidmueller.com)

## Drawings

## Miscellaneous

| Type                               | RCM |  |  |  |  |  | Coil voltage             | with LED | with LED + diode |
|------------------------------------|-----|--|--|--|--|--|--------------------------|----------|------------------|
| RIDER Control Multiple             |     |  |  |  |  |  | 006 6 V DC               | L06      |                  |
| Type of contact                    |     |  |  |  |  |  | 012 12 V DC              | L12      | AB2              |
| 2 2CO                              |     |  |  |  |  |  | 024 24 V DC              | L24      | AC4              |
| 3 3CO                              |     |  |  |  |  |  | 048 48 V DC              | L48      | AE8              |
| 5 4CO                              |     |  |  |  |  |  | 060 60 V DC              | L60      |                  |
| Contact material                   |     |  |  |  |  |  | 110 110 V DC             | M10      | BB0              |
| 7 AgNi 90/10 with test button      |     |  |  |  |  |  | 220 220 V DC             | N20      |                  |
| 8 AgNi 90/10 hgp, with test button |     |  |  |  |  |  | 506 6 V AC               | R06      |                  |
|                                    |     |  |  |  |  |  | 512 12 V AC              | R12      |                  |
|                                    |     |  |  |  |  |  | 524 24 V AC              | R24      |                  |
|                                    |     |  |  |  |  |  | 548 48 V AC              | R48      |                  |
|                                    |     |  |  |  |  |  | 615 115 V AC             | S15      |                  |
|                                    |     |  |  |  |  |  | 730 230 V AC             | T30      |                  |
|                                    |     |  |  |  |  |  | Type of construction     |          |                  |
|                                    |     |  |  |  |  |  | 0 Standard, 2,8mm Faston |          |                  |

Type codes