

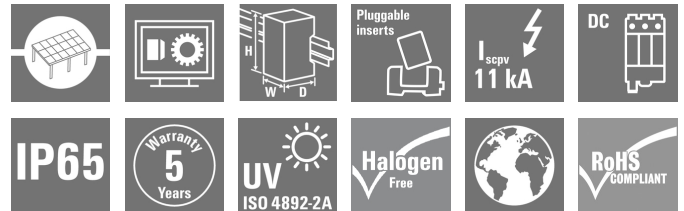
**PV 215S0F3CXXV100TXPX15LWW****Weidmüller Interface GmbH & Co. KG**

Klingenbergstraße 26

D-32758 Detmold

Germany

www.weidmueller.com

**Standard portfolio for 1 MPPT string inverters  
Protect and monitor strings in solar parks with  
string inverters with 1 MPPT.**

The following PV DC combiner box portfolio is meant to be used with string inverters with one Maximum Power Point Tracker (MPPT) in order to bundle, protect and isolate the number of strings these inverters use. 1 MPPT

**General ordering data**

|            |  |
|------------|--|
| Version    | Photovoltaics, Assembled enclosure, Combiner Box, 1500 V, With fuse holder, Surge protection II, Cable gland, for wall mounting, Switch disconnect, Landscape, String Inverter |
| Order No.  | <a href="#">8000123552</a>   |
| Type       | PV 215S0F3CXXV100TXPX15LWW   |
| GTIN (EAN) | 4099986883987  |
| Qty.       | 1 pc(s).   |

## PV 215S0F3CXXV100TXPX15LWW

Weidmüller Interface GmbH &amp; Co. KG

Klingenbergstraße 26

D-32758 Detmold

Germany

www.weidmueller.com

## Technical data

## Dimensions and weights

|            |              |                 |             |
|------------|--------------|-----------------|-------------|
| Depth      | 300 mm       | Depth (inches)  | 11.811 inch |
| Height     | 636 mm       | Height (inches) | 25.039 inch |
| Width      | 847 mm       | Width (inches)  | 33.346 inch |
| Net weight | 13,664.162 g |                 |             |

## Temperatures

|                     |                 |                       |                 |
|---------------------|-----------------|-----------------------|-----------------|
| Ambient temperature | -20°C to +45 °C | Operating temperature | -20°C to +45 °C |
|---------------------|-----------------|-----------------------|-----------------|

## DC electrical properties

|                          |                                    |                    |                      |
|--------------------------|------------------------------------|--------------------|----------------------|
| Earthing                 | Directly at the VPU                | Rated voltage      | 1,500 V              |
| Surge protection DC side | 1500 V type II with remote contact | Switching capacity | 400 A (DC21B 1500 V) |

## DC inputs

|                                 |                                    |                         |                 |
|---------------------------------|------------------------------------|-------------------------|-----------------|
| Amount of maximum power points  | 1                                  |                         |                 |
| Cartridge fuse                  | 10 x 85 mm                         |                         |                 |
| Connection DC input cable (+)   | Screw connection                   |                         |                 |
| Connection DC input cable (-)   | Screw connection                   |                         |                 |
| Connection type, DC input cable | Cable gland                        |                         |                 |
| DC Input + & -                  | Wire connection                    | Type of connection      | M16 Cable gland |
|                                 | Cable entry                        | Number of cable entries | 30              |
|                                 |                                    | Cable diameter, min.    | 5 mm            |
|                                 |                                    | Cable diameter, max.    | 10 mm           |
| Functional earth connector      | Cable entry                        | Number of cable entries | 1               |
|                                 |                                    | Cable diameter, min.    | 6 mm            |
|                                 |                                    | Cable diameter, max.    | 12 mm           |
|                                 | Wire connection                    | Type of connection      | M20 Cable gland |
| Fuse                            | Empty fuse holder                  |                         |                 |
| Fuse                            | 15 A, 16 A, 20 A, 25 A, 30 A, 32 A |                         |                 |
| Fuse type                       | Empty fuse holder                  |                         |                 |
| Fuse-link standard              | gPV (EN 60269-6)                   |                         |                 |
| Fused poles of string           | +/-                                |                         |                 |
| Number of DC inputs             | 15                                 |                         |                 |
| Position of the fuses           | positive and negative inputs       |                         |                 |

## DC outputs

|   |                             |                          |                     |
|---|-----------------------------|--------------------------|---------------------|
| Connection type, DC output cable            | Screw terminal connectors   |                          |                     |
| DC Output + & -                             | Wire connection             | Type of connection       | M40 Cable gland     |
|   |                             | Wire cross-section, min. | 150 mm <sup>2</sup> |
|   |                             | Wire cross-section, max. | 300 mm <sup>2</sup> |
| DC output cable connection                  | M10 bolt and nut connection |                          |                     |
| Load circuit breaker with auxiliary contact | No                          |                          |                     |
| Number of DC outputs                        | 2                           |                          |                     |

**PV 215S0F3CXXV100TPX15LWW****Weidmüller Interface GmbH & Co. KG**

Klingenbergstraße 26

D-32758 Detmold

Germany

www.weidmueller.com

**Technical data****DC string monitoring**

|                     |               |
|---------------------|---------------|
| Monitoring function | Non monitored |
|---------------------|---------------|

**Housing**

|                   |      |                  |               |
|-------------------|------|------------------|---------------|
| Protection degree | IP65 | Type of mounting | Wall mounting |
|-------------------|------|------------------|---------------|

**Norms and standards**

|           |                                     |
|-----------|-------------------------------------|
| Standards | EN 61439-2:2011, IEC 61439-2 ed 3.0 |
|-----------|-------------------------------------|

**Guarantee**

|               |         |
|---------------|---------|
| Time interval | 5 years |
|---------------|---------|

**Electrical characteristics**

|                  |         |                                 |             |
|------------------|---------|---------------------------------|-------------|
| Rated DC voltage | 1,500 V | Switching disconnecter capacity | IEC 60947-3 |
|------------------|---------|---------------------------------|-------------|

**Enclosure**

|                        |   |                               |                                    |
|------------------------|---|-------------------------------|------------------------------------|
| Connection type string | Internal terminal (with cable gland feed-through) | Cover                         | Hinged door                        |
| Enclosure attachment   | Fixing lugs                                       | Impact resistance             | IK 10 in accordance with IEC 62262 |
| Insulating material    | Polyester glass-fibre reinforced, Polycarbonate   | Switch disconnecter execution | switch inside enclosure            |
| Type of mounting       | Wall mounting                                     |                               |                                    |

**General data**

|                       |   |                   |      |
|-----------------------|---|-------------------|------|
| Installation location | Protected outdoor area (>1 km from sea) | Protection degree | IP65 |
| Standards             | EN 61439-2:2011, IEC 61439-2 ed 3.0     |                   |      |

**Surge protection DC side**

|                                 |                                    |           |                                     |
|---------------------------------|------------------------------------|-----------|-------------------------------------|
| Short-circuit current $I_{SCP}$ | 19 A                               | Standards | EN 61439-2:2011, IEC 61439-2 ed 3.0 |
| Surge protection DC side        | 1500 V type II with remote contact |           |                                     |

**Classifications**

|             |             |             |             |
|-------------|-------------|-------------|-------------|
| ETIM 6.0    | EC002928    | ETIM 7.0    | EC002928    |
| ETIM 8.0    | EC003857    | ETIM 9.0    | EC003857    |
| ECLASS 9.0  | 22-57-92-03 | ECLASS 9.1  | 22-57-02-90 |
| ECLASS 10.0 | 22-57-02-90 | ECLASS 11.0 | 22-57-02-92 |
| ECLASS 12.0 | 22-57-02-92 | ECLASS 13.0 | 22-57-02-92 |

**Environmental Product Compliance**

|            |                                      |
|------------|--------------------------------------|
| REACH SVHC | Lead 7439-92-1                       |
| SCIP       | 1d28ada4-1634-4382-8635-45f6353a6574 |

Creation date July 2, 2024 10:17:33 AM CEST

Catalogue status 29.06.2024 / We reserve the right to make technical changes.

**PV 215S0F3CXXV100TXPX15LWW****Weidmüller Interface GmbH & Co. KG**

Klingenbergstraße 26

D-32758 Detmold

Germany

[www.weidmueller.com](http://www.weidmueller.com)**Technical data****Approvals**

Approvals



ROHS

Conform

**Downloads**

Approval/Certificate/Document of Conformity

[EU Declaration of Conformity Combiner Boxes non monitored](#)

Technical Documentation

[Mechanical Drawing](#)[Electrical Drawing](#)

User Documentation

[User Manual PV DC Combiner Boxes](#)

Catalogues

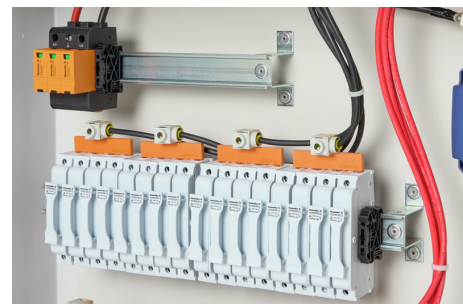
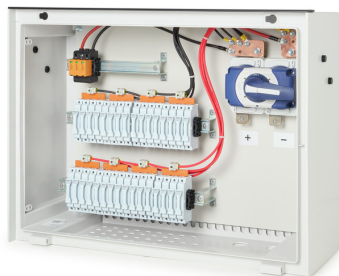
[Catalogues in PDF-format](#)

## PV 215S0F3CXXV100TXPX15LWW

**Weidmüller Interface GmbH & Co. KG**  
Klingenbergstraße 26  
D-32758 Detmold  
Germany

[www.weidmueller.com](http://www.weidmueller.com)

## Drawings



# PV 215S0F3CXXV100TXPX15LWW

**Weidmüller Interface GmbH & Co. KG**  
Klingenbergstraße 26  
D-32758 Detmold  
Germany

[www.weidmueller.com](http://www.weidmueller.com)

## Drawings

### Combiner Box Name Description

PV 2 24 S0 FX CXX VX OX TXPX 15 P F ES

**PV 1:** PV DC L0 Industrial  
**PV 2:** PV DC L1 Industrial  
**PV 3:** PV DC L2 Industrial

**Number of inputs (01-36)**

**S0:** Switch-disconnector

S0 → Switch-disconnector (SW)  
S1 → Switch-disconnector with remote disconnection (SW RD)  
S2 → Molded Case Circuit Breaker (MCCB)  
S3 → Motorized switch-disconnector (SW M)  
S4 → Switch-disconnector with Contactor (SW K)  
S5 → No switch-disconnector needed (N/A)

**FX:** Fuses / Fuseholders position

F0 → Fuses Both Poles  
F1 → Only Positive Fuses  
F2 → Only Negative Fuses  
F3 → Only Fuse Holders  
F4 → Only Fuse holder in positive (+)  
F5 → Only Fuse holder in negative (-)  
FX → No Fuse holders needed (N/A)

**CXX:** CIL Fuses Type → C 10/15/16/20/25/30/40/50/55/60/63/80 - (Example C20)

**NXX:** NH Fuses Type → N 40/50/63/80/100/125/160/200/250/315/355/400 - (Example N40)

CXX → N/A, NXX → N/A

**VX:** SPD Type

V0 → SPD Class II / V1 → SPD Class I+II / V2 → SPD Class I  
VX → No SPD needed (N/A)

**OX:** Output type  
O0 → No holder needed (N/A)  
O1 → Cable Gland  
O2 → M24  
O3 → M24  
O4 → M24  
O5 → M24

**Country / Whole World**

**Floating:** YES (F) / NO

**P:** Portrait

**L:** Landscape

**10:** 1000V

**15:** 1500V

**TX:** Monitoring Device

TX → No monitoring (N/A)  
T0 → TC 24V (24V or 1.3kV)  
T1 → TC 24V  
T2 → TC 24V  
T3 → TC 24V  
T4 → TC 24V  
T5 → TC 24V  
T6 → TC 24V  
T7 → TC 24V  
T8 → TC 24V  
T9 → TC 24V  
T10 → TC 24V  
T11 → TC 24V  
T12 → TC 24V  
T13 → TC 24V  
T14 → TC 24V  
T15 → TC 24V  
T16 → TC 24V  
T17 → TC 24V  
T18 → TC 24V  
T19 → TC 24V  
T20 → TC 24V  
T21 → TC 24V  
T22 → TC 24V  
T23 → TC 24V  
T24 → TC 24V  
T25 → TC 24V  
T26 → TC 24V  
T27 → TC 24V  
T28 → TC 24V  
T29 → TC 24V  
T30 → TC 24V  
T31 → TC 24V  
T32 → TC 24V  
T33 → TC 24V  
T34 → TC 24V  
T35 → TC 24V  
T36 → TC 24V  
T37 → TC 24V  
T38 → TC 24V  
T39 → TC 24V  
T40 → TC 24V  
T41 → TC 24V  
T42 → TC 24V  
T43 → TC 24V  
T44 → TC 24V  
T45 → TC 24V  
T46 → TC 24V  
T47 → TC 24V  
T48 → TC 24V  
T49 → TC 24V  
T50 → TC 24V  
T51 → TC 24V  
T52 → TC 24V  
T53 → TC 24V  
T54 → TC 24V  
T55 → TC 24V  
T56 → TC 24V  
T57 → TC 24V  
T58 → TC 24V  
T59 → TC 24V  
T60 → TC 24V  
T61 → TC 24V  
T62 → TC 24V  
T63 → TC 24V  
T64 → TC 24V  
T65 → TC 24V  
T66 → TC 24V  
T67 → TC 24V  
T68 → TC 24V  
T69 → TC 24V  
T70 → TC 24V  
T71 → TC 24V  
T72 → TC 24V  
T73 → TC 24V  
T74 → TC 24V  
T75 → TC 24V  
T76 → TC 24V  
T77 → TC 24V  
T78 → TC 24V  
T79 → TC 24V  
T80 → TC 24V  
T81 → TC 24V  
T82 → TC 24V  
T83 → TC 24V  
T84 → TC 24V  
T85 → TC 24V  
T86 → TC 24V  
T87 → TC 24V  
T88 → TC 24V  
T89 → TC 24V  
T90 → TC 24V  
T91 → TC 24V  
T92 → TC 24V  
T93 → TC 24V  
T94 → TC 24V  
T95 → TC 24V  
T96 → TC 24V  
T97 → TC 24V  
T98 → TC 24V  
T99 → TC 24V

**PX:** Power Supply for (TX)

PX → No Power Supply Needed (N/A)  
P0 → Self-Powered (SE)  
P1 → External Power Supply (PS ACDC)  
P2 → Self-Powered (SE)  
P3 → Self-Powered (SE)  
P4 → Self-Powered (SE)  
P5 → Self-Powered (SE)  
P6 → Self-Powered (SE)  
P7 → Self-Powered (SE)  
P8 → Self-Powered (SE)  
P9 → Self-Powered (SE)

