

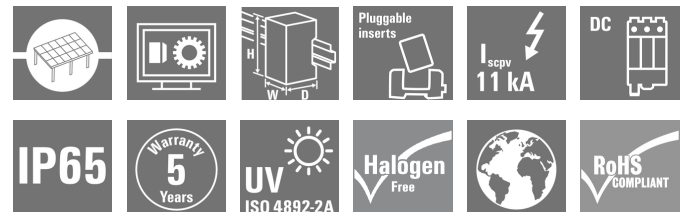
PV 216S0F3CXXV100TA1PA15LWW**Weidmüller Interface GmbH & Co. KG**

Klingenbergstraße 26

D-32758 Detmold

Germany

www.weidmueller.com

**Standard portfolio for 1 MPPT string inverters
Protect and monitor strings in solar parks with
string inverters with 1 MPPT.**

The following PV DC combiner box portfolio is meant to be used with string inverters with one Maximum Power Point Tracker (MPPT) in order to bundle, protect and isolate the number of strings these inverters use. 1 MPPT

General ordering data

Version	Photovoltaics, Assembled enclosure, Combiner Box, 1500 V, With fuse holder, Surge protection II, Cable gland, for wall mounting, Switch disconnect, Landscape, Current monitoring, Voltage monitoring, Temperature monitoring, String Inverter
Order No.	8000122738
Type	PV 216S0F3CXXV100TA1PA15LWW
GTIN (EAN)	4099986861190
Qty.	1 pc(s).

Creation date June 2, 2024 12:04:14 AM CEST

Catalogue status 18.05.2024 / We reserve the right to make technical changes.

PV 216S0F3CXXV100TA1PA15LWW

Weidmüller Interface GmbH & Co. KG

Klingenbergstraße 26

D-32758 Detmold

Germany

www.weidmueller.com

Technical data

Dimensions and weights

Depth	300 mm	Depth (inches)	11.811 inch
Height	636 mm	Height (inches)	25.039 inch
Width	847 mm	Width (inches)	33.346 inch
Net weight	18,000 g		

Temperatures

Ambient temperature	-20°C to +45 °C	Operating temperature	-20°C to +45 °C
---------------------	-----------------	-----------------------	-----------------

DC electrical properties

Earthing	Directly at the VPU	Rated voltage	1,500 V
Surge protection DC side	1500 V type II with remote contact	Switching capacity	400 A (DC21B 1500 V)

DC inputs

Amount of maximum power points	1		
Cartridge fuse	10 x 85 mm		
Connection DC input cable (+)	Screw connection		
Connection DC input cable (-)	Screw connection		
Connection type, DC input cable	Cable gland		
DC Input + & -	Wire connection	Type of connection	M16 Cable gland
	Cable entry	Number of cable entries	32
		Cable diameter, min.	5 mm
		Cable diameter, max.	10 mm
Functional earth connector	Cable entry	Number of cable entries	1
		Cable diameter, min.	6 mm
		Cable diameter, max.	12 mm
	Wire connection	Type of connection	M20 Cable gland
Fuse	Empty fuse holder		
Fuse	15 A, 16 A, 20 A, 25 A, 30 A, 32 A		
Fuse type	Empty fuse holder		
Fuse-link standard	gPV (EN 60269-6)		
Fused poles of string	+/-		
Number of DC inputs	16		
Position of the fuses	positive and negative inputs		

DC outputs

Connection type, DC output cable	Screw terminal connectors		
DC Output + & -	Wire connection	Type of connection	M40 Cable gland
		Wire cross-section, min.	22 mm ²
		Wire cross-section, max.	32 mm ²
DC output cable connection	M10 bolt and nut connection		
Load circuit breaker with auxiliary contact	No		
Number of DC outputs	2		

PV 216S0F3CXXV100TA1PA15LWW

Weidmüller Interface GmbH & Co. KG

Klingenbergstraße 26

D-32758 Detmold

Germany

www.weidmueller.com

Technical data

DC string monitoring

Current monitoring	Solar SMS	Monitoring function	Solar SMS, Output voltage, current, temperature
Supply	Self-powered	Temperature monitoring	Solar SMS
Voltage monitoring	Solar SMS		

Housing

Protection degree	IP65	Type of mounting	Wall mounting
-------------------	------	------------------	---------------

Norms and standards

Standards	EN 61439-2:2011, IEC 61439-2 ed 3.0
-----------	-------------------------------------

Guarantee

Time interval	5 years
---------------	---------

Electrical characteristics

Rated DC voltage	1,500 V	Switching disconnecter capacity	IEC 60947-3
------------------	---------	---------------------------------	-------------

Enclosure

Connection type string	Internal terminal (with cable gland feed-through)	Enclosure attachment	Fixing lugs
Impact resistance	IK10 in accordance with IEC 62262	Insulating material	Polyester glass-fibre reinforced, Polycarbonate
Switch disconnecter execution	switch inside enclosure	Type of mounting	Wall mounting

General data

Installation location	Protected outdoor area (>1 km from sea)	Protection degree	IP65
Standards	EN 61439-2:2011, IEC 61439-2 ed 3.0		

Surge protection DC side

Short-circuit current I_{SCP}	19 A	Standards	EN 61439-2:2011, IEC 61439-2 ed 3.0
Surge protection DC side	1500 V type II with remote contact		

Classifications

ETIM 6.0	EC002928	ETIM 7.0	EC002928
ETIM 8.0	EC003857	ETIM 9.0	EC003857
ECLASS 9.0	22-57-92-03	ECLASS 9.1	22-57-02-90
ECLASS 10.0	22-57-02-90	ECLASS 11.0	22-57-02-92
ECLASS 12.0	22-57-02-92	ECLASS 13.0	22-57-02-92

PV 216S0F3CXXV100TA1PA15LWW**Weidmüller Interface GmbH & Co. KG**

Klingenbergstraße 26

D-32758 Detmold

Germany

www.weidmueller.com**Technical data****Approvals**

Approvals



ROHS

Conform

DownloadsApproval/Certificate/Document of Con-
formity[EU Declaration of Conformity Combiner Boxes monitored](#)

Technical Documentation

[Mechanical Drawing](#)[Electrical Drawing](#)

User Documentation

[User Manual PV DC Combiner Boxes](#)

Catalogues

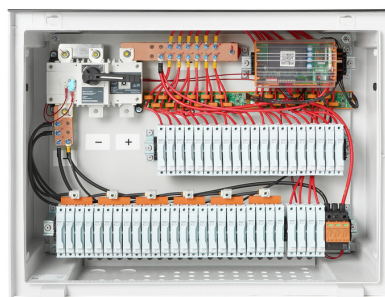
[Catalogues in PDF-format](#)

PV 216S0F3CXXV100TA1PA15LWW

Weidmüller Interface GmbH & Co. KG
Klingenbergstraße 26
D-32758 Detmold
Germany

www.weidmueller.com

Drawings



PV 216S0F3CXXV100TA1PA15LWW

Weidmüller Interface GmbH & Co. KG
 Klingenbergstraße 26
 D-32758 Detmold
 Germany

www.weidmueller.com

Drawings

Combiner Box Name Description

PV 2 24 S0 FX CXX VX OX TXPX 15 P F ES

PV 1: PV DC L0 Industrial
PV 2: PV DC L1 Industrial
PV 3: PV DC L2 Industrial

Number of inputs (01-36)

S0: Switch-disconnector

S0 → Switch-disconnector (SW)
 S1 → Switch-disconnector with remote disconnection (SW RD)
 S2 → Molded Case Circuit Breaker (MCCB)
 S3 → Molded switch-disconnector (SW M)
 S4 → Switch-disconnector with Contactor (SW K)
 S5 → No switch-disconnector needed (N/A)

FX: Fuses / Fuseholders position

F0 → Fuses Both Poles
 F1 → Only Positive Fuses
 F2 → Only Negative Fuses
 F3 → Only Fuse Holders
 F4 → Only Fuse holder in negative (-)
 F5 → Only Fuse holder in negative (+)
 F6 → No Fuse holders needed (N/A)

CXX: CIL Fuses Type → C 10/15/16/20/25/30/40/50/55/60/63/80 - (Example C20)

NXX: NH Fuses Type → N 40/50/63/80/100/125/160/200/250/315/355/400 - (Example N40)

CXX → N/A, NXX → N/A

VX: SPD Type

V0 → SPD Class II / V1 → SPD Class I+II / V2 → SPD Class I
 VX → No SPD needed (N/A)

OX: Output type

OX → No Input needed (N/A)
 O1 → WMAC
 O2 → MACE
 O3 → Multivolt CG

Country / Whole World

Floating: YES (F) / NO

P: Portrait

L: Landscape

10: 1000v

15: 1500v

TX: Monitoring Device

TX → No monitoring (N/A)
 T2 → TC 200 (200 or 2.5kV)
 T5 → TC 200kV
 T6 → TC 200kV
 T7 → TC 200kV
 T8 → Others
 T9 → Forcibly
 T10 → Solar SMS (25A)
 T12 → Solar SMS (50A)
 T13 → Solar SMS Lokuliban (25A)
 T14 → Solar SMS Lokuliban (50A)

PX: Power Supply for (TX)

PX → No Power Supply Needed (N/A)
 P0 → Self-Powered (BATT)
 P1 → External Power Supply (PS-ACDC)
 P2 → Self-Powered (BATT)

