

**PV 220S0F3CXXV000TXPX15LWW****Weidmüller Interface GmbH & Co. KG**

Klingenbergstraße 26

D-32758 Detmold

Germany

[www.weidmueller.com](http://www.weidmueller.com)**Standard portfolio for combiner boxes.****Protect and monitor strings in a solar park.**

Weidmüller has developed a full portfolio of standard PV DC combiner boxes for solar parks. These products intend to cover the most common used solutions for such purposes in an efficient and competitive manner. From 6 up to 32 inputs our Generation X offers a full range of products for monitored and non-monitored combiner boxes allowing our customer to benefit from Weidmüller's experience and commitment to quality. Gen X

**General ordering data**

Version	Photovoltaics, Assembled enclosure, Combiner Box, 1500 V, With fuse holder, Surge protection II, Cable gland, for wall mounting, Switch disconnect, Landscape, Central Inverter
Order No.	<a href="#">8000119548</a>
Type	PV 220S0F3CXXV000TXPX15LWW
GTIN (EAN)	4099986864689
Qty.	1 pc(s).

## PV 220S0F3CXXV000TXPX15LWW

Weidmüller Interface GmbH &amp; Co. KG

Klingenbergstraße 26

D-32758 Detmold

Germany

www.weidmueller.com

## Technical data

## Dimensions and weights

Depth	300 mm	Depth (inches)	11.811 inch
Height	636 mm	Height (inches)	25.039 inch
Width	847 mm	Width (inches)	33.346 inch
Net weight	16,756.564 g		

## Temperatures

Ambient temperature	-20°C to +45 °C	Operating temperature	-20°C to +45 °C
---------------------	-----------------	-----------------------	-----------------

## DC electrical properties

Earthing	Directly at the VPU	Rated voltage	1,500 V
Surge protection DC side	1500 V type II with remote contact	Switching capacity	400 A (DC21B 1500 V)

## DC inputs

Cartridge fuse	10 x 85 mm		
Connection DC input cable (+)	Screw connection		
Connection DC input cable (-)	Screw connection		
Connection type, DC input cable	Cable gland		
DC Input + & -	Wire connection	Type of connection	M16 Cable gland
	Cable entry	Number of cable entries	40
		Cable diameter, min.	5 mm
		Cable diameter, max.	10 mm
Functional earth connector	Cable entry	Number of cable entries	1
		Cable diameter, min.	6 mm
		Cable diameter, max.	12 mm
	Wire connection	Type of connection	M20 Cable gland
Fuse	15 A, 16 A, 20 A, 25 A, 30 A, 32 A		
Fuse	Empty fuse holder		
Fuse type	Empty fuse holder		
Fuse-link standard	gPV (EN 60269-6)		
Fused poles of string	+/-		
Number of DC inputs	20		
Number of conduit inlets	43		
Number of inputs	20		
Position of the fuses	positive and negative inputs		

## DC outputs

DC Output + & -	Wire connection	Type of connection	M40 Cable gland
		Wire cross-section, min.	150 mm <sup>2</sup>
		Wire cross-section, max.	400 mm <sup>2</sup>
DC output cable connection	M12 bolt and nut connection		
Load circuit breaker with auxiliary contact	No		
Number of DC outputs	2		

**PV 220S0F3CXXV000TXPX15LWW****Weidmüller Interface GmbH & Co. KG**

Klingenbergstraße 26

D-32758 Detmold

Germany

www.weidmueller.com

**Technical data****DC string monitoring**

Monitoring function	Non monitored
---------------------	---------------

**Housing**

Protection degree	IP65	Type of mounting	Wall mounting
-------------------	------	------------------	---------------

**Norms and standards**

Standards	EN 61439-2:2011, IEC 61439-2 ed 3.0
-----------	-------------------------------------

**Guarantee**

Time interval	5 years
---------------	---------

**Electrical characteristics**

Rated DC voltage	1,500 V	Switching disconnecter capacity	IEC 60947-3
------------------	---------	---------------------------------	-------------

**Enclosure**

Connection type string	Internal terminal (with cable gland feed-through)	Cover	Hinged door
Enclosure attachment	Fixing lugs	Impact resistance	IK 10 in accordance with IEC 62262
Insulating material	Polyester glass-fibre reinforced, Polycarbonate	Switch disconnecter execution	switch inside enclosure
Type of mounting	Wall mounting		

**General data**

Installation location	Protected outdoor area (>1 km from sea)	Protection degree	IP65
Standards	EN 61439-2:2011, IEC 61439-2 ed 3.0		

**Surge protection DC side**

Requirements class	Type II	Short-circuit current $I_{SCP}$	14 A
Standards	EN 61439-2:2011, IEC 61439-2 ed 3.0	Surge protection DC side	1500 V type II with remote contact

**Classifications**

ETIM 6.0	EC002928	ETIM 7.0	EC002928
ETIM 8.0	EC003857	ETIM 9.0	EC003857
ECLASS 9.0	22-57-92-03	ECLASS 9.1	22-57-02-90
ECLASS 10.0	22-57-02-90	ECLASS 11.0	22-57-02-92
ECLASS 12.0	22-57-02-92	ECLASS 13.0	22-57-02-92

**PV 220S0F3CXXV000TXPX15LWW****Weidmüller Interface GmbH & Co. KG**

Klingenbergstraße 26

D-32758 Detmold

Germany

[www.weidmueller.com](http://www.weidmueller.com)**Technical data****Environmental Product Compliance**

REACH SVHC	Lead 7439-92-1
SCIP	1d28ada4-1634-4382-8635-45f6353a6574
RoHS Compliance Status	Compliant with exemption
RoHS Exemption (if applicable/known)	6c

**Approvals**

Approvals



ROHS	Conform
------	---------

**Downloads**

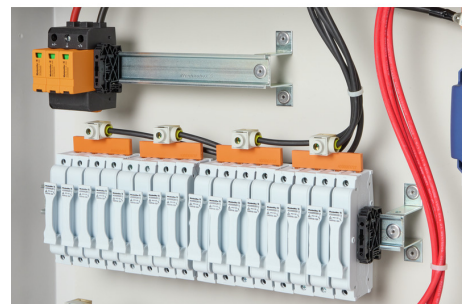
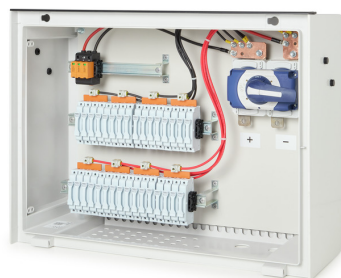
Approval/Certificate/Document of Conformity	<a href="#">EU Declaration of Conformity Combiner Boxes non monitored</a>
Engineering Data	<a href="#">Electrical Drawing</a> <a href="#">Thermal Report</a>
Technical Documentation	<a href="#">Mechanical Drawing</a>
User Documentation	<a href="#">User Manual PV DC Combiner Boxes</a>
Catalogues	<a href="#">Catalogues in PDF-format</a>

## PV 220S0F3CXXV000TXPX15LWW

**Weidmüller Interface GmbH & Co. KG**  
Klingenbergstraße 26  
D-32758 Detmold  
Germany

[www.weidmueller.com](http://www.weidmueller.com)

# Drawings



## PV 220S0F3CXXV000TXPX15LWW

**Weidmüller Interface GmbH & Co. KG**  
 Klingenbergstraße 26  
 D-32758 Detmold  
 Germany

www.weidmueller.com

## Drawings

## Combiner Box Name Description

PV 2 24 S0 FX CXX VX OX TXPX 15 P F ES

**PV 1:** PV DC L0 Industrial  
**PV 2:** PV DC L1 Industrial  
**PV 3:** PV DC L2 Industrial

**Number of inputs (01-36)**

**S0:** Switch-disconnector

S0 → Switch-disconnector (SW)  
 S1 → Switch-disconnector with remote disconnection (SW RD)  
 S2 → Molded Case Circuit Breaker (MCCB)  
 S3 → Motorized switch-disconnector (SW M)  
 S4 → Switch-disconnector with Contactor (SW K)  
 S5 → No switch-disconnector needed (N/A)

**FX:** Fuses / Fuseholders position

F0 → Fuses Both Poles  
 F1 → Only Positive Fuses  
 F2 → Only Negative Fuses  
 F3 → Only Fuse Holders  
 F4 → Only Fuse holder in positive (+)  
 F5 → Only Fuse holder in negative (-)  
 FX → No Fuse holders needed (N/A)

**CXX:** CIL Fuses Type → C 10/15/16/20/25/30/40/50/55/60/63/80 - (Example C20)

**NXX:** NH Fuses Type → N 40/50/63/80/100/125/160/200/250/315/355/400 - (Example N40)

CXX → N/A, NXX → N/A

**VX:** SPD Type

V0 → SPD Class II / V1 → SPD Class I+II / V2 → SPD Class I  
 VX → No SPD needed (N/A)

**OX:** Output type

O0 → No holder needed (N/A)  
 O1 → Cable Gland  
 O2 → M24  
 O3 → M26  
 O4 → M28  
 O5 → M30  
 O6 → M32  
 O7 → M36  
 O8 → M40  
 O9 → M44  
 O10 → M48  
 O11 → M52  
 O12 → M56  
 O13 → M60  
 O14 → M64  
 O15 → M68  
 O16 → M72  
 O17 → M76  
 O18 → M80  
 O19 → M84  
 O20 → M88  
 O21 → M92  
 O22 → M96  
 O23 → M100  
 O24 → M104  
 O25 → M108  
 O26 → M112  
 O27 → M116  
 O28 → M120  
 O29 → M124  
 O30 → M128  
 O31 → M132  
 O32 → M136  
 O33 → M140  
 O34 → M144  
 O35 → M148  
 O36 → M152  
 O37 → M156  
 O38 → M160  
 O39 → M164  
 O40 → M168  
 O41 → M172  
 O42 → M176  
 O43 → M180  
 O44 → M184  
 O45 → M188  
 O46 → M192  
 O47 → M196  
 O48 → M200  
 O49 → M204  
 O50 → M208  
 O51 → M212  
 O52 → M216  
 O53 → M220  
 O54 → M224  
 O55 → M228  
 O56 → M232  
 O57 → M236  
 O58 → M240  
 O59 → M244  
 O60 → M248  
 O61 → M252  
 O62 → M256  
 O63 → M260  
 O64 → M264  
 O65 → M268  
 O66 → M272  
 O67 → M276  
 O68 → M280  
 O69 → M284  
 O70 → M288  
 O71 → M292  
 O72 → M296  
 O73 → M300  
 O74 → M304  
 O75 → M308  
 O76 → M312  
 O77 → M316  
 O78 → M320  
 O79 → M324  
 O80 → M328  
 O81 → M332  
 O82 → M336  
 O83 → M340  
 O84 → M344  
 O85 → M348  
 O86 → M352  
 O87 → M356  
 O88 → M360  
 O89 → M364  
 O90 → M368  
 O91 → M372  
 O92 → M376  
 O93 → M380  
 O94 → M384  
 O95 → M388  
 O96 → M392  
 O97 → M396  
 O98 → M400  
 O99 → M404  
 O100 → M408  
 O101 → M412  
 O102 → M416  
 O103 → M420  
 O104 → M424  
 O105 → M428  
 O106 → M432  
 O107 → M436  
 O108 → M440  
 O109 → M444  
 O110 → M448  
 O111 → M452  
 O112 → M456  
 O113 → M460  
 O114 → M464  
 O115 → M468  
 O116 → M472  
 O117 → M476  
 O118 → M480  
 O119 → M484  
 O120 → M488  
 O121 → M492  
 O122 → M496  
 O123 → M500  
 O124 → M504  
 O125 → M508  
 O126 → M512  
 O127 → M516  
 O128 → M520  
 O129 → M524  
 O130 → M528  
 O131 → M532  
 O132 → M536  
 O133 → M540  
 O134 → M544  
 O135 → M548  
 O136 → M552  
 O137 → M556  
 O138 → M560  
 O139 → M564  
 O140 → M568  
 O141 → M572  
 O142 → M576  
 O143 → M580  
 O144 → M584  
 O145 → M588  
 O146 → M592  
 O147 → M596  
 O148 → M600  
 O149 → M604  
 O150 → M608  
 O151 → M612  
 O152 → M616  
 O153 → M620  
 O154 → M624  
 O155 → M628  
 O156 → M632  
 O157 → M636  
 O158 → M640  
 O159 → M644  
 O160 → M648  
 O161 → M652  
 O162 → M656  
 O163 → M660  
 O164 → M664  
 O165 → M668  
 O166 → M672  
 O167 → M676  
 O168 → M680  
 O169 → M684  
 O170 → M688  
 O171 → M692  
 O172 → M696  
 O173 → M700  
 O174 → M704  
 O175 → M708  
 O176 → M712  
 O177 → M716  
 O178 → M720  
 O179 → M724  
 O180 → M728  
 O181 → M732  
 O182 → M736  
 O183 → M740  
 O184 → M744  
 O185 → M748  
 O186 → M752  
 O187 → M756  
 O188 → M760  
 O189 → M764  
 O190 → M768  
 O191 → M772  
 O192 → M776  
 O193 → M780  
 O194 → M784  
 O195 → M788  
 O196 → M792  
 O197 → M796  
 O198 → M800  
 O199 → M804  
 O200 → M808  
 O201 → M812  
 O202 → M816  
 O203 → M820  
 O204 → M824  
 O205 → M828  
 O206 → M832  
 O207 → M836  
 O208 → M840  
 O209 → M844  
 O210 → M848  
 O211 → M852  
 O212 → M856  
 O213 → M860  
 O214 → M864  
 O215 → M868  
 O216 → M872  
 O217 → M876  
 O218 → M880  
 O219 → M884  
 O220 → M888  
 O221 → M892  
 O222 → M896  
 O223 → M900  
 O224 → M904  
 O225 → M908  
 O226 → M912  
 O227 → M916  
 O228 → M920  
 O229 → M924  
 O230 → M928  
 O231 → M932  
 O232 → M936  
 O233 → M940  
 O234 → M944  
 O235 → M948  
 O236 → M952  
 O237 → M956  
 O238 → M960  
 O239 → M964  
 O240 → M968  
 O241 → M972  
 O242 → M976  
 O243 → M980  
 O244 → M984  
 O245 → M988  
 O246 → M992  
 O247 → M996  
 O248 → M1000

**Country / Whole World**

**Floating:** YES (F) / NO

**P:** Portrait

**L:** Landscape

**10:** 1000V

**15:** 1500V

**TX:** Monitoring Device

TX → No monitoring (N/A)  
 T1 → TC 100V (100V or 1.3kV)  
 T2 → TC 250V  
 T3 → TC 500V  
 T4 → TC 1000V  
 T5 → TC 1500V  
 T6 → TC 2000V  
 T7 → TC 2500V  
 T8 → TC 3000V  
 T9 → TC 3500V  
 T10 → TC 4000V  
 T11 → TC 4500V  
 T12 → TC 5000V  
 T13 → TC 5500V  
 T14 → TC 6000V  
 T15 → TC 6500V  
 T16 → TC 7000V  
 T17 → TC 7500V  
 T18 → TC 8000V  
 T19 → TC 8500V  
 T20 → TC 9000V  
 T21 → TC 9500V  
 T22 → TC 10000V  
 T23 → TC 10500V  
 T24 → TC 11000V  
 T25 → TC 11500V  
 T26 → TC 12000V  
 T27 → TC 12500V  
 T28 → TC 13000V  
 T29 → TC 13500V  
 T30 → TC 14000V  
 T31 → TC 14500V  
 T32 → TC 15000V  
 T33 → TC 15500V  
 T34 → TC 16000V  
 T35 → TC 16500V  
 T36 → TC 17000V  
 T37 → TC 17500V  
 T38 → TC 18000V  
 T39 → TC 18500V  
 T40 → TC 19000V  
 T41 → TC 19500V  
 T42 → TC 20000V  
 T43 → TC 20500V  
 T44 → TC 21000V  
 T45 → TC 21500V  
 T46 → TC 22000V  
 T47 → TC 22500V  
 T48 → TC 23000V  
 T49 → TC 23500V  
 T50 → TC 24000V  
 T51 → TC 24500V  
 T52 → TC 25000V  
 T53 → TC 25500V  
 T54 → TC 26000V  
 T55 → TC 26500V  
 T56 → TC 27000V  
 T57 → TC 27500V  
 T58 → TC 28000V  
 T59 → TC 28500V  
 T60 → TC 29000V  
 T61 → TC 29500V  
 T62 → TC 30000V  
 T63 → TC 30500V  
 T64 → TC 31000V  
 T65 → TC 31500V  
 T66 → TC 32000V  
 T67 → TC 32500V  
 T68 → TC 33000V  
 T69 → TC 33500V  
 T70 → TC 34000V  
 T71 → TC 34500V  
 T72 → TC 35000V  
 T73 → TC 35500V  
 T74 → TC 36000V  
 T75 → TC 36500V  
 T76 → TC 37000V  
 T77 → TC 37500V  
 T78 → TC 38000V  
 T79 → TC 38500V  
 T80 → TC 39000V  
 T81 → TC 39500V  
 T82 → TC 40000V  
 T83 → TC 40500V  
 T84 → TC 41000V  
 T85 → TC 41500V  
 T86 → TC 42000V  
 T87 → TC 42500V  
 T88 → TC 43000V  
 T89 → TC 43500V  
 T90 → TC 44000V  
 T91 → TC 44500V  
 T92 → TC 45000V  
 T93 → TC 45500V  
 T94 → TC 46000V  
 T95 → TC 46500V  
 T96 → TC 47000V  
 T97 → TC 47500V  
 T98 → TC 48000V  
 T99 → TC 48500V  
 T100 → TC 49000V  
 T101 → TC 49500V  
 T102 → TC 50000V  
 T103 → TC 50500V  
 T104 → TC 51000V  
 T105 → TC 51500V  
 T106 → TC 52000V  
 T107 → TC 52500V  
 T108 → TC 53000V  
 T109 → TC 53500V  
 T110 → TC 54000V  
 T111 → TC 54500V  
 T112 → TC 55000V  
 T113 → TC 55500V  
 T114 → TC 56000V  
 T115 → TC 56500V  
 T116 → TC 57000V  
 T117 → TC 57500V  
 T118 → TC 58000V  
 T119 → TC 58500V  
 T120 → TC 59000V  
 T121 → TC 59500V  
 T122 → TC 60000V  
 T123 → TC 60500V  
 T124 → TC 61000V  
 T125 → TC 61500V  
 T126 → TC 62000V  
 T127 → TC 62500V  
 T128 → TC 63000V  
 T129 → TC 63500V  
 T130 → TC 64000V  
 T131 → TC 64500V  
 T132 → TC 65000V  
 T133 → TC 65500V  
 T134 → TC 66000V  
 T135 → TC 66500V  
 T136 → TC 67000V  
 T137 → TC 67500V  
 T138 → TC 68000V  
 T139 → TC 68500V  
 T140 → TC 69000V  
 T141 → TC 69500V  
 T142 → TC 70000V  
 T143 → TC 70500V  
 T144 → TC 71000V  
 T145 → TC 71500V  
 T146 → TC 72000V  
 T147 → TC 72500V  
 T148 → TC 73000V  
 T149 → TC 73500V  
 T150 → TC 74000V  
 T151 → TC 74500V  
 T152 → TC 75000V  
 T153 → TC 75500V  
 T154 → TC 76000V  
 T155 → TC 76500V  
 T156 → TC 77000V  
 T157 → TC 77500V  
 T158 → TC 78000V  
 T159 → TC 78500V  
 T160 → TC 79000V  
 T161 → TC 79500V  
 T162 → TC 80000V  
 T163 → TC 80500V  
 T164 → TC 81000V  
 T165 → TC 81500V  
 T166 → TC 82000V  
 T167 → TC 82500V  
 T168 → TC 83000V  
 T169 → TC 83500V  
 T170 → TC 84000V  
 T171 → TC 84500V  
 T172 → TC 85000V  
 T173 → TC 85500V  
 T174 → TC 86000V  
 T175 → TC 86500V  
 T176 → TC 87000V  
 T177 → TC 87500V  
 T178 → TC 88000V  
 T179 → TC 88500V  
 T180 → TC 89000V  
 T181 → TC 89500V  
 T182 → TC 90000V  
 T183 → TC 90500V  
 T184 → TC 91000V  
 T185 → TC 91500V  
 T186 → TC 92000V  
 T187 → TC 92500V  
 T188 → TC 93000V  
 T189 → TC 93500V  
 T190 → TC 94000V  
 T191 → TC 94500V  
 T192 → TC 95000V  
 T193 → TC 95500V  
 T194 → TC 96000V  
 T195 → TC 96500V  
 T196 → TC 97000V  
 T197 → TC 97500V  
 T198 → TC 98000V  
 T199 → TC 98500V  
 T200 → TC 99000V  
 T201 → TC 99500V  
 T202 → TC 100000V  
 T203 → TC 100500V  
 T204 → TC 101000V  
 T205 → TC 101500V  
 T206 → TC 102000V  
 T207 → TC 102500V  
 T208 → TC 103000V  
 T209 → TC 103500V  
 T210 → TC 104000V  
 T211 → TC 104500V  
 T212 → TC 105000V  
 T213 → TC 105500V  
 T214 → TC 106000V  
 T215 → TC 106500V  
 T216 → TC 107000V  
 T217 → TC 107500V  
 T218 → TC 108000V  
 T219 → TC 108500V  
 T220 → TC 109000V  
 T221 → TC 109500V  
 T222 → TC 110000V  
 T223 → TC 110500V  
 T224 → TC 111000V  
 T225 → TC 111500V  
 T226 → TC 112000V  
 T227 → TC 112500V  
 T228 → TC 113000V  
 T229 → TC 113500V  
 T230 → TC 114000V  
 T231 → TC 114500V  
 T232 → TC 115000V  
 T233 → TC 115500V  
 T234 → TC 116000V  
 T235 → TC 116500V  
 T236 → TC 117000V  
 T237 → TC 117500V  
 T238 → TC 118000V  
 T239 → TC 118500V  
 T240 → TC 119000V  
 T241 → TC 119500V  
 T242 → TC 120000V  
 T243 → TC 120500V  
 T244 → TC 121000V  
 T245 → TC 121500V  
 T246 → TC 122000V  
 T247 → TC 122500V  
 T248 → TC 123000V  
 T249 → TC 123500V  
 T250 → TC 124000V  
 T251 → TC 124500V  
 T252 → TC 125000V  
 T253 → TC 125500V  
 T254 → TC 126000V  
 T255 → TC 126500V  
 T256 → TC 127000V  
 T257 → TC 127500V  
 T258 → TC 128000V  
 T259 → TC 128500V  
 T260 → TC 129000V  
 T261 → TC 129500V  
 T262 → TC 130000V  
 T263 → TC 130500V  
 T264 → TC 131000V  
 T265 → TC 131500V  
 T266 → TC 132000V  
 T267 → TC 132500V  
 T268 → TC 133000V  
 T269 → TC 133500V  
 T270 → TC 134000V  
 T271 → TC 134500V  
 T272 → TC 135000V  
 T273 → TC 135500V  
 T274 → TC 136000V  
 T275 → TC 136500V  
 T276 → TC 137000V  
 T277 → TC 137500V  
 T278 → TC 138000V  
 T279 → TC 138500V  
 T280 → TC 139000V  
 T281 → TC 139500V  
 T282 → TC 140000V  
 T283 → TC 140500V  
 T284 → TC 141000V  
 T285 → TC 141500V  
 T286 → TC 142000V  
 T287 → TC 142500V  
 T288 → TC 143000V  
 T289 → TC 143500V  
 T290 → TC 144000V  
 T291 → TC 144500V  
 T292 → TC 145000V  
 T293 → TC 145500V  
 T294 → TC 146000V  
 T295 → TC 146500V  
 T296 → TC 147000V  
 T297 → TC 147500V  
 T298 → TC 148000V  
 T299 → TC 148500V  
 T300 → TC 149000V  
 T301 → TC 149500V  
 T302 → TC 150000V  
 T303 → TC 150500V  
 T304 → TC 151000V  
 T305 → TC 151500V  
 T306 → TC 152000V  
 T307 → TC 152500V  
 T308 → TC 153000V  
 T309 → TC 153500V  
 T310 → TC 154000V  
 T311 → TC 154500V  
 T312 → TC 155000V  
 T313 → TC 155500V  
 T314 → TC 156000V  
 T315 → TC 156500V  
 T316 → TC 157000V  
 T317 → TC 157500V  
 T318 → TC 158000V  
 T319 → TC 158500V  
 T320 → TC 159000V  
 T321 → TC 159500V  
 T322 → TC 160000V  
 T323 → TC 160500V  
 T324 → TC 161000V  
 T325 → TC 161500V  
 T326 → TC 162000V  
 T327 → TC 162500V  
 T328 → TC 163000V  
 T329 → TC 163500V  
 T330 → TC 164000V  
 T331 → TC 164500V  
 T332 → TC 165000V  
 T333 → TC 165500V  
 T334 → TC 166000V  
 T335 → TC 166500V  
 T336 → TC 167000V  
 T337 → TC 167500V  
 T338 → TC 168000V  
 T339 → TC 168500V  
 T340 → TC 169000V  
 T341 → TC 169500V  
 T342 → TC 170000V  
 T343 → TC 170500V  
 T344 → TC 171000V  
 T345 → TC 171500V  
 T346 → TC 172000V  
 T347 → TC 172500V  
 T348 → TC 173000V  
 T349 → TC 173500V  
 T350 → TC 174000V  
 T351 → TC 174500V  
 T352 → TC 175000V  
 T353 → TC 175500V  
 T354 → TC 176000V  
 T355 → TC 176500V  
 T356 → TC 177000V  
 T357 → TC 177500V  
 T358 → TC 178000V  
 T359 → TC 178500V  
 T360 → TC 179000V  
 T361 → TC 179500V  
 T362 → TC 180000V  
 T363 → TC 180500V  
 T364 → TC 181000V  
 T365 → TC 181500V  
 T366 → TC 182000V  
 T367 → TC 182500V  
 T368 → TC 183000V  
 T369 → TC 183500V  
 T370 → TC 184000V  
 T371 → TC 184500V  
 T372 → TC 185000V  
 T373 → TC 185500V  
 T374 → TC 186000V  
 T375 → TC 186500V  
 T376 → TC 187000V  
 T377 → TC 187500V  
 T378 → TC 188000V  
 T379 → TC 188500V  
 T380 → TC 189000V  
 T381 → TC 189500V  
 T382 → TC 190000V  
 T383 → TC 190500V  
 T384 → TC 191000V  
 T385 → TC 191500V  
 T386 → TC 192000V  
 T387 → TC 192500V  
 T388 → TC 193000V  
 T389 → TC 193500V  
 T390 → TC 194000V  
 T391 → TC 194500V  
 T392 → TC 195000V  
 T393 → TC 195500V  
 T394 → TC 196000V  
 T395 → TC 196500V  
 T396 → TC 197000V  
 T397 → TC 197500V  
 T398 → TC 198000V  
 T399 → TC 198500V  
 T400 → TC 199000V  
 T401 → TC 199500V  
 T402 → TC 200000V  
 T403 → TC 200500V  
 T404 → TC 201000V  
 T405 → TC 201500V  
 T406 → TC 202000V  
 T407 → TC 202500V  
 T408 → TC 203000V  
 T409 → TC 203500V  
 T410 → TC 204000V  
 T411 → TC 204500V  
 T412 → TC 205000V  
 T413 → TC 205500V  
 T414 → TC 206000V  
 T415 → TC 206500V  
 T416 → TC 207000V  
 T417 → TC 207500V  
 T418 → TC 208000V  
 T419 → TC 208500V  
 T420 → TC 209000V  
 T421 → TC 209500V  
 T422 → TC 210000V  
 T423 → TC 210500V  
 T424 → TC 211000V  
 T425 → TC 211500V  
 T426 → TC 212000V  
 T427 → TC 212500V  
 T428 → TC 213000V  
 T429 → TC 213500V  
 T430 → TC 214000V  
 T431 → TC 214500V  
 T432 → TC 215000V  
 T433 → TC 215500V  
 T434 → TC 216000V  
 T435 → TC 216500V  
 T436 → TC 217000V  
 T437 → TC 217500V  
 T438 → TC 218000V  
 T439 → TC 218500V  
 T440 → TC 219000V  
 T441 → TC 219500V