

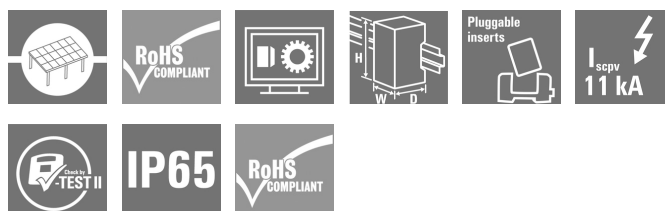
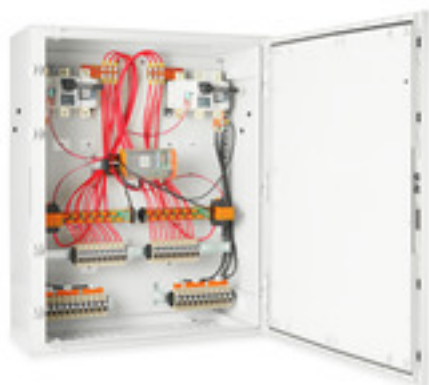
PV 210S5F3CXXV100TA1PA10PWW**Weidmüller Interface GmbH & Co. KG**

Klingenbergstraße 26

D-32758 Detmold

Germany

www.weidmueller.com



PV Next combiner boxes for inverters with 1 to 12 MPP trackers are used to protect the DC side of a photovoltaic system. The combiner boxes protect the inverter against overvoltages and thus comply with the European Directive EN 51543-32. In addition, these products offer the possibility to protect the system against reverse currents and the possibility to combine strings to save cables during installation.

General ordering data

| | |
|------------|---|
| Version | Photovoltaics, Combiner Box, 1000 V, 2 MPP's, 10 Inputs / 1 Output per MPP, With fuse holder, Surge protection, Switch disconnecter, Current monitoring, Cable gland, Designed for Fronius Taurus Eco Inverters |
| Order No. | 8000111138 |
| Type | PV 210S5F3CXXV100TA1PA10PWW |
| GTIN (EAN) | 4099986933637 |
| Qty. | 1 pc(s). |

PV 210S5F3CXXV100TA1PA10PWW

Weidmüller Interface GmbH & Co. KG

Klingenbergstraße 26

D-32758 Detmold

Germany

www.weidmueller.com

Technical data

Dimensions and weights

| | | | |
|------------------------------|-------------|----------------|--------------|
| Depth | 350 mm | Depth (inches) | 13.78 inch |
| Depth with add-on components | 350 mm | Height | 1,065 mm |
| Height (inches) | 41.929 inch | Width | 852 mm |
| Width (inches) | 33.543 inch | Net weight | 40,625.594 g |

Electrical characteristics

| | |
|------------------|---------|
| Rated DC voltage | 1,000 V |
|------------------|---------|

Enclosure

| | | | |
|-------------------------------|---|----------------------|-------------|
| Connection type string | Internal terminal (with cable gland feed-through) | Enclosure attachment | Fixing lugs |
| Insulating material | Polyester glass-fibre reinforced, Polycarbonate | Protection class | II |
| Switch disconnecter execution | switch inside enclosure | Type of mounting | Fixing lugs |

General data

| | |
|-----------------------|---|
| Installation location | Protected outdoor area (>1 km from sea) |
|-----------------------|---|

Inputs

| | | | |
|------------------------------------|---|---|-----------------------|
| Amount of maximum power points | 2 | | |
| Cartridge fuse | 10 x 38 mm | | |
| Fuse type | Empty fuse holder | | |
| Fuse-link standard | gPV (EN 60269-6) | | |
| Max. number of DC inputs | per Maximum Power Point 10 inputs connected in parallel | | |
| Surge protection auxiliary contact | Wire connection | Type of connection | PUSH IN with actuator |
| | | Flexible, max. H05(07) V-K | 2.5 mm² |
| | | w. wire end ferrule, DIN 46228 pt 1, max. | 2.5 mm² |
| | Cable entry | Number of cable entries | 1 |

Outputs

| | |
|---------------------------|-------------------------------------|
| Max. number of DC outputs | per Maximum Power Point 1 output |
|---------------------------|-------------------------------------|

Surge protection DC side

| | | | |
|--|---------|--|--------------------|
| Discharge current I_n (8/20 μ s) | 20 kA | Discharge current, max. (8/20 μ s) | 40 kA |
| Lightning test current I_{imp} (10/350 μ s) | 6.25 kA | Maximum continuous operating voltage DC UCPV mode +/-, -/PE, +/-PE | 1,000 V |
| PV system voltage, max. U_{cpv} | 1,000 V | Requirements class | Type I/II |
| Short-circuit current I_{SCPV} | 162.5 A | Surge protection DC side | 1000 V type I + II |
| Total discharge current I_{total} (8/20 μ s) | 50 kA | Total discharge current I_{total} (10/350 μ s) | 12.5 kA |

PV 210S5F3CXXV100TA1PA10PWW**Weidmüller Interface GmbH & Co. KG**

Klingenbergstraße 26

D-32758 Detmold

Germany

www.weidmueller.com**Technical data****Classifications**

| | | | |
|-------------|-------------|-------------|-------------|
| ETIM 6.0 | EC002928 | ETIM 7.0 | EC002928 |
| ETIM 8.0 | EC003857 | ETIM 9.0 | EC003857 |
| ECLASS 9.0 | 22-57-92-03 | ECLASS 9.1 | 22-57-02-90 |
| ECLASS 10.0 | 22-57-02-90 | ECLASS 11.0 | 22-57-02-92 |
| ECLASS 12.0 | 22-57-02-92 | ECLASS 13.0 | 22-57-02-92 |

Important note

| | |
|---------------------|------------------------|
| Product information | Fuses are not included |
|---------------------|------------------------|

Approvals

| | |
|------|---------|
| ROHS | Conform |
|------|---------|

Downloads

| | |
|------------|--|
| Catalogues | Catalogues in PDF-format |
|------------|--|

PV 210S5F3CXXV100TA1PA10PWW

Weidmüller Interface GmbH & Co. KG
Klingenbergstraße 26
D-32758 Detmold
Germany

www.weidmueller.com

Drawings

