

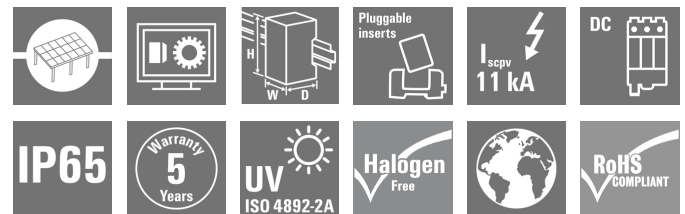
**PV 216S0F3CXXV000TAPA15LWW****Weidmüller Interface GmbH & Co. KG**

Klingenbergstraße 26

D-32758 Detmold

Germany

www.weidmueller.com

**Standard portfolio for combiner boxes.****Protect and monitor strings in a solar park.**

Weidmüller has developed a full portfolio of standard PV DC combiner boxes for solar parks. These products intend to cover the most common used solutions for such purposes in an efficient and competitive manner. From 6 up to 32 inputs our Generation X offers a full range of products for monitored and non-monitored combiner boxes allowing our customer to benefit from Weidmüller's experience and commitment to quality. Gen X

**General ordering data**

|            |   |
|------------|---|
| Version    | Photovoltaics, Assembled enclosure, Combiner Box, 1500 V, With fuse holder, Surge protection II, Cable gland, for wall mounting, Switch disconnect, Landscape, Current monitoring, Voltage monitoring, Central Inverter |
| Order No.  | <a href="#">8000093503</a>  |
| Type       | PV 216S0F3CXXV000TAPA15LWW  |
| GTIN (EAN) | 4064675881087   |
| Qty.       | 1 pc(s).  |

## PV 216S0F3CXXV000TAPA15LWW

Weidmüller Interface GmbH &amp; Co. KG

Klingenbergstraße 26

D-32758 Detmold

Germany

www.weidmueller.com

## Technical data

## Dimensions and weights

|            |          |                 |             |
|------------|----------|-----------------|-------------|
| Depth      | 300 mm   | Depth (inches)  | 11.811 inch |
| Height     | 636 mm   | Height (inches) | 25.039 inch |
| Width      | 847 mm   | Width (inches)  | 33.346 inch |
| Net weight | 30,000 g |                 |             |

## Temperatures

|                     |                 |                       |                 |
|---------------------|-----------------|-----------------------|-----------------|
| Ambient temperature | -20°C to +45 °C | Operating temperature | -20°C to +45 °C |
|---------------------|-----------------|-----------------------|-----------------|

## DC electrical properties

|                          |                                    |                    |                      |
|--------------------------|------------------------------------|--------------------|----------------------|
| Earthing                 | Directly at the VPU                | Rated voltage      | 1,500 V              |
| Surge protection DC side | 1500 V type II with remote contact | Switching capacity | 400 A (DC21B 1500 V) |

## DC inputs

|                                 |                                    |                         |                 |
|---------------------------------|------------------------------------|-------------------------|-----------------|
| Cartridge fuse                  | 10 x 85 mm                         |                         |                 |
| Connection DC input cable (+)   | Screw connection                   |                         |                 |
| Connection DC input cable (-)   | Screw connection                   |                         |                 |
| Connection type, DC input cable | Cable gland                        |                         |                 |
| DC Input + & -                  | Wire connection                    | Type of connection      | M16 Cable gland |
|                                 | Cable entry                        | Number of cable entries | 32              |
|                                 |                                    | Cable diameter, min.    | 5 mm            |
|                                 |                                    | Cable diameter, max.    | 10 mm           |
| Functional earth connector      | Cable entry                        | Number of cable entries | 1               |
|                                 |                                    | Cable diameter, min.    | 6 mm            |
|                                 |                                    | Cable diameter, max.    | 12 mm           |
|                                 | Wire connection                    | Type of connection      | M20 Cable gland |
| Fuse                            | Empty fuse holder                  |                         |                 |
| Fuse                            | 15 A, 16 A, 20 A, 25 A, 30 A, 32 A |                         |                 |
| Fuse type                       | Empty fuse holder                  |                         |                 |
| Fuse-link standard              | gPV (EN 60269-6)                   |                         |                 |
| Fused poles of string           | +/-                                |                         |                 |
| Number of DC inputs             | 16                                 |                         |                 |
| Position of the fuses           | positive and negative inputs       |                         |                 |

## DC outputs

|   |                             |                          |                    |
|---|-----------------------------|--------------------------|--------------------|
| DC Output + & -                             | Wire connection             | Type of connection       | M40 Cable gland    |
|   |                             | Wire cross-section, min. | 22 mm <sup>2</sup> |
|   |                             | Wire cross-section, max. | 32 mm <sup>2</sup> |
|   |                             |                          |                    |
| DC output cable connection                  | M10 bolt and nut connection |                          |                    |
| Load circuit breaker with auxiliary contact | No                          |                          |                    |
| Number of DC outputs                        | 2                           |                          |                    |

## PV 216S0F3CXXV000TAPA15LWW

Weidmüller Interface GmbH &amp; Co. KG

Klingenbergstraße 26

D-32758 Detmold

Germany

www.weidmueller.com

## Technical data

## DC string monitoring

|                    |              |                        |   |
|--------------------|--------------|------------------------|---|
| Current monitoring | Solar SMS    | Monitoring function    | Solar SMS, Output voltage, current, temperature |
| Supply             | Self-powered | Temperature monitoring | Solar SMS                                       |
| Voltage monitoring | Solar SMS    |                        |   |

## Housing

|                   |      |                  |               |
|-------------------|------|------------------|---------------|
| Protection degree | IP65 | Type of mounting | Wall mounting |
|-------------------|------|------------------|---------------|

## Norms and standards

|           |                                     |
|-----------|-------------------------------------|
| Standards | EN 61439-2:2011, IEC 61439-2 ed 3.0 |
|-----------|-------------------------------------|

## Guarantee

|               |         |
|---------------|---------|
| Time interval | 5 years |
|---------------|---------|

## Electrical characteristics

|                  |         |                                 |             |
|------------------|---------|---------------------------------|-------------|
| Rated DC voltage | 1,500 V | Switching disconnector capacity | IEC 60947-3 |
|------------------|---------|---------------------------------|-------------|

## Enclosure

|                               |   |                      |   |
|-------------------------------|---|----------------------|---|
| Connection type string        | Internal terminal (with cable gland feed-through) | Enclosure attachment | Fixing lugs                                     |
| Impact resistance             | IK10 in accordance with IEC 62262                 | Insulating material  | Polyester glass-fibre reinforced, Polycarbonate |
| Switch disconnector execution | switch inside enclosure                           | Type of mounting     | Wall mounting                                   |

## General data

|                       |   |                   |      |
|-----------------------|---|-------------------|------|
| Installation location | Protected outdoor area (>1 km from sea) | Protection degree | IP65 |
| Standards             | EN 61439-2:2011, IEC 61439-2 ed 3.0     |                   |      |

## Surge protection DC side

|                                 |                                    |           |                                     |
|---------------------------------|------------------------------------|-----------|-------------------------------------|
| Short-circuit current $I_{SCP}$ | 14 A                               | Standards | EN 61439-2:2011, IEC 61439-2 ed 3.0 |
| Surge protection DC side        | 1500 V type II with remote contact |           |                                     |

## Classifications

|             |             |             |             |
|-------------|-------------|-------------|-------------|
| ETIM 6.0    | EC002928    | ETIM 7.0    | EC002928    |
| ETIM 8.0    | EC003857    | ETIM 9.0    | EC003857    |
| ECLASS 9.0  | 22-57-92-03 | ECLASS 9.1  | 22-57-02-90 |
| ECLASS 10.0 | 22-57-02-90 | ECLASS 11.0 | 22-57-02-92 |
| ECLASS 12.0 | 22-57-02-92 | ECLASS 13.0 | 22-57-02-92 |

**PV 216S0F3CXXV000TAPA15LWW****Weidmüller Interface GmbH & Co. KG**

Klingenbergstraße 26

D-32758 Detmold

Germany

[www.weidmueller.com](http://www.weidmueller.com)**Technical data****Approvals**

Approvals



ROHS

Conform

**Downloads**

Approval/Certificate/Document of Conformity

[EU Declaration of Conformity Combiner Boxes monitored](#)

Engineering Data

[Electrical Drawing](#)[Thermal Report](#)

Technical Documentation

[Mechanical Drawing](#)

User Documentation

[User Manual PV DC Combiner Boxes](#)

Catalogues

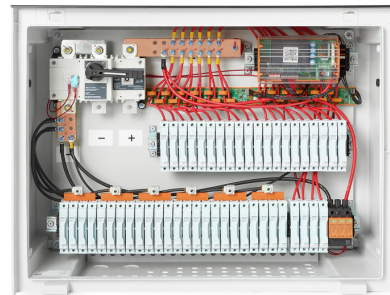
[Catalogues in PDF-format](#)

### PV 216S0F3CXXV000TAPA15LWW

**Weidmüller Interface GmbH & Co. KG**  
Klingenbergstraße 26  
D-32758 Detmold  
Germany

[www.weidmueller.com](http://www.weidmueller.com)

## Drawings



## PV 216S0F3CXXV000TAPA15LWW

**Weidmüller Interface GmbH & Co. KG**  
 Klingenbergstraße 26  
 D-32758 Detmold  
 Germany

www.weidmueller.com

## Drawings

## Combiner Box Name Description

PV 2 24 S0 FX CXX VX OX TXPX 15 P F ES

**PV 1:** PV DC L0 Industrial  
**PV 2:** PV DC L1 Industrial  
**PV 3:** PV DC L2 Industrial

**Number of inputs (01-36)**

**S0:** Switch-disconnector

S0 → Switch-disconnector (SW)  
 S1 → Switch-disconnector with remote disconnection (SW RD)  
 S2 → Molded Case Circuit Breaker (MCCB)  
 S3 → Motorized switch-disconnector (SW M)  
 S4 → Switch-disconnector with Contactor (SW K)  
 S5 → No switch-disconnector needed (N/A)

**FX:** Fuses / Fuseholders position

F0 → Fuses Both Poles  
 F1 → Only Positive Fuses  
 F2 → Only Negative Fuses  
 F3 → Only Fuse Holders  
 F4 → Only Fuse holder in positive (+)  
 F5 → Only Fuse holder in negative (-)  
 FX → No Fuse holders needed (N/A)

**CXX:** CIL Fuses Type → C 10/15/16/20/25/30/40/50/55/60/63/80 - (Example C20)

**NXX:** NH Fuses Type → N 40/50/63/80/100/125/160/200/250/315/355/400 - (Example N40)

CXX → N/A, NXX → N/A

**VX:** SPD Type

V0 → SPD Class II / V1 → SPD Class I+II / V2 → SPD Class I  
 VX → No SPD needed (N/A)

**OX:** Output type  
 O0 → No holder needed (N/A)  
 O1 → Cable Gland  
 O2 → M24  
 O3 → M24x1.5

**Country / Whole World**

**Floating:** YES (F) / NO

**P:** Portrait

**L:** Landscape

**10:** 1000V

**15:** 1500V

**TX:** Monitoring Device

TX → No monitoring (N/A)  
 T2 → TC 24V (24V or 1.3kV)  
 T5 → TC 24V  
 T7 → TC 24V  
 T8 → Others  
 T9 → Farneth  
 T10 → Solar SMS (25A)  
 T12 → Solar SMS (25A)  
 T13 → Solar SMS LUKEMAN (25A)  
 T14 → Solar SMS LUKEMAN (25A)

**PX:** Power Supply for (TX)

PX → No Power Supply Needed (N/A)  
 P0 → Self-Powered (SEI)  
 P1 → External Power Supply (PS ACDC)  
 P2 → Self-Powered (SEI)

