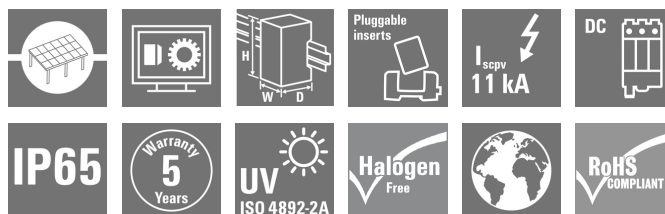


**PV 216S0F4CXXV000TXPX15LWW****Weidmüller Interface GmbH & Co. KG**

Klingenbergstraße 26

D-32758 Detmold

Germany

[www.weidmueller.com](http://www.weidmueller.com)**Standard portfolio for combiner boxes.****Protect and monitor strings in a solar park.**

Weidmüller has developed a full portfolio of standard PV DC combiner boxes for solar parks. These products intend to cover the most common used solutions for such purposes in an efficient and competitive manner. From 6 up to 32 inputs our Generation X offers a full range of products for monitored and non-monitored combiner boxes allowing our customer to benefit from Weidmüller's experience and commitment to quality. Gen X

**General ordering data**

|            |   |
|------------|---|
| Version    | Photovoltaics, Assembled enclosure, Combiner Box, 1500 V, With fuse holder, Surge protection II, Cable gland, for wall mounting, Switch disconnect, Landscape, Central Inverter |
| Order No.  | <a href="#">8000078885</a>  |
| Type       | PV 216S0F4CXXV000TXPX15LWW  |
| GTIN (EAN) | 4064675468943   |
| Qty.       | 1 pc(s).  |

## PV 216S0F4CXXV000TXPX15LWW

Weidmüller Interface GmbH &amp; Co. KG

Klingenbergstraße 26

D-32758 Detmold

Germany

www.weidmueller.com

## Technical data

## Dimensions and weights

|            |             |                 |             |
|------------|-------------|-----------------|-------------|
| Depth      | 300 mm      | Depth (inches)  | 11.811 inch |
| Height     | 536 mm      | Height (inches) | 21.102 inch |
| Width      | 747 mm      | Width (inches)  | 29.409 inch |
| Net weight | 9,205.557 g |                 |             |

## Temperatures

|                     |                 |                       |                 |
|---------------------|-----------------|-----------------------|-----------------|
| Ambient temperature | -20°C to +45 °C | Operating temperature | -20°C to +45 °C |
|---------------------|-----------------|-----------------------|-----------------|

## DC electrical properties

|                          |                                       |                    |                      |
|--------------------------|---------------------------------------|--------------------|----------------------|
| Earthing                 | Directly at the VPU                   | Rated voltage      | 1,500 V              |
| Surge protection DC side | 1500 V type II without remote contact | Switching capacity | 400 A (DC21B 1500 V) |

## DC inputs

|                                 |                                    |                         |                 |
|---------------------------------|------------------------------------|-------------------------|-----------------|
| Cartridge fuse                  | 10 x 85 mm                         |                         |                 |
| Connection DC input cable (+)   | Screw connection                   |                         |                 |
| Connection DC input cable (-)   | M8 bolt and nut connection         |                         |                 |
| Connection type, DC input cable | Cable gland                        |                         |                 |
| DC Input + & -                  | Wire connection                    | Type of connection      | M16 Cable gland |
|                                 | Cable entry                        | Number of cable entries | 32              |
|                                 |                                    | Cable diameter, min.    | 5 mm            |
|                                 |                                    | Cable diameter, max.    | 10 mm           |
| Functional earth connector      | Cable entry                        | Number of cable entries | 1               |
|                                 |                                    | Cable diameter, min.    | 6 mm            |
|                                 |                                    | Cable diameter, max.    | 12 mm           |
|                                 | Wire connection                    | Type of connection      | M20 Cable gland |
| Fuse                            | Empty fuse holder                  |                         |                 |
| Fuse                            | 15 A, 16 A, 20 A, 25 A, 30 A, 32 A |                         |                 |
| Fuse type                       | Empty fuse holder                  |                         |                 |
| Fuse-link standard              | gPV (EN 60269-6)                   |                         |                 |
| Fused poles of string           | +/-                                |                         |                 |
| Number of DC inputs             | 16                                 |                         |                 |
| Number of conduit inlets        | 35                                 |                         |                 |
| Position of the fuses           | only in positive inputs            |                         |                 |

## DC outputs

|   |                             |                          |                     |
|---|-----------------------------|--------------------------|---------------------|
| DC Output + & -                             | Wire connection             | Type of connection       | M40 Cable gland     |
|   |                             | Wire cross-section, min. | 150 mm <sup>2</sup> |
|   |                             | Wire cross-section, max. | 300 mm <sup>2</sup> |
| DC output cable connection                  | M10 bolt and nut connection |                          |                     |
| Load circuit breaker with auxiliary contact | No                          |                          |                     |
| Number of DC outputs                        | 2                           |                          |                     |

## DC string monitoring

|                     |               |
|---------------------|---------------|
| Monitoring function | Non monitored |
|---------------------|---------------|

Creation date November 5, 2024 6:21:17 PM CET

Catalogue status 26.10.2024 / We reserve the right to make technical changes.

**PV 216S0F4CXXV000TXPX15LWW****Weidmüller Interface GmbH & Co. KG**

Klingenbergstraße 26

D-32758 Detmold

Germany

[www.weidmueller.com](http://www.weidmueller.com)**Technical data****Housing**

|                   |      |                  |               |
|-------------------|------|------------------|---------------|
| Protection degree | IP65 | Type of mounting | Wall mounting |
|-------------------|------|------------------|---------------|

**Norms and standards**

|           |                                     |
|-----------|-------------------------------------|
| Standards | EN 61439-2:2011, IEC 61439-2 ed 3.0 |
|-----------|-------------------------------------|

**Guarantee**

|               |         |
|---------------|---------|
| Time interval | 5 years |
|---------------|---------|

**Classifications**

|             |             |             |             |
|-------------|-------------|-------------|-------------|
| ETIM 6.0    | EC002928    | ETIM 7.0    | EC002928    |
| ETIM 8.0    | EC003857    | ETIM 9.0    | EC003857    |
| ECLASS 9.0  | 22-57-92-03 | ECLASS 9.1  | 22-57-02-90 |
| ECLASS 10.0 | 22-57-02-90 | ECLASS 11.0 | 22-57-02-92 |
| ECLASS 12.0 | 22-57-02-92 | ECLASS 13.0 | 22-57-02-92 |
| ECLASS 14.0 | 22-57-02-92 |             |             |

**Environmental Product Compliance**

|                        |                       |
|------------------------|-----------------------|
| RoHS Compliance Status | Compliant             |
| REACH SVHC             | No SVHC above 0.1 wt% |

**Approvals**

Approvals



|      |         |
|------|---------|
| ROHS | Conform |
|------|---------|

**Downloads**

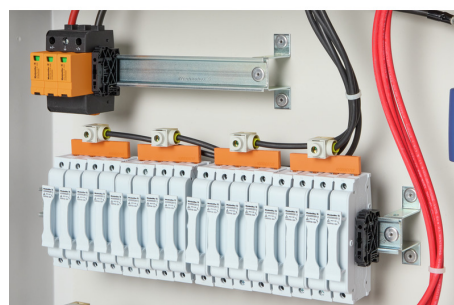
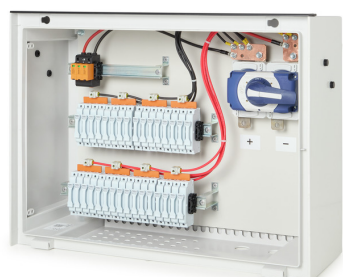
|   |   |
|---|---|
| Approval/Certificate/Document of Conformity | <a href="#">EU Declaration of Conformity Combiner Boxes non monitored</a>                               |
| Engineering Data                            | <a href="#">Electrical Drawing</a><br><a href="#">Thermal Report</a><br><a href="#">CAD data – STEP</a> |
| Technical Documentation                     | <a href="#">Mechanical Drawing</a>  |
| User Documentation                          | <a href="#">User Manual PV DC Combiner Boxes</a>  |
| Catalogues                                  | <a href="#">Catalogues in PDF-format</a>  |

## PV 216S0F4CXXV000TXPX15LWW

**Weidmüller Interface GmbH & Co. KG**  
Klingenbergstraße 26  
D-32758 Detmold  
Germany

[www.weidmueller.com](http://www.weidmueller.com)

## Drawings



# PV 216S0F4CXXV000TXPX15LWW

**Weidmüller Interface GmbH & Co. KG**  
Klingenbergstraße 26  
D-32758 Detmold  
Germany

[www.weidmueller.com](http://www.weidmueller.com)

## Drawings

### Combiner Box Name Description

PV 2 24 S0 FX CXX VX OX TXPX 15 P F ES

**PV 1:** PV DC L0 Industrial  
**PV 2:** PV DC L1 Industrial  
**PV 3:** PV DC L2 Industrial

**Number of inputs (01-36)**

**S0:** Switch-disconnector  
S0 → Switch-disconnector (SW)  
S1 → Switch-disconnector with remote disconnection (SW RD)  
S2 → Molded Case Circuit Breaker (MCCB)  
S3 → Motorized switch-disconnector (SW M)  
S4 → Switch-disconnector with Contactor (SW K)  
S5 → No switch-disconnector needed (N/A)

**FX:** Fuses / Fuseholders position

F0 → Fuses Both Poles  
F1 → Only Positive Fuses  
F2 → Only Negative Fuses  
F3 → Only Fuse Holders  
F4 → Only Fuse holder in positive (+)  
F5 → Only Fuse holder in negative (-)  
FX → No Fuse holders needed (N/A)

**CXX:** CIL Fuses Type → C 10/15/16/20/25/30/40/50/55/60/63/80 - (Example C20)

**NXX:** NH Fuses Type → N 40/50/63/80/100/125/160/200/250/315/355/400 - (Example N40)

**CXX → N/A, NXX → N/A**

**VX:** SPD Type

V0 → SPD Class II / V1 → SPD Class I+II / V2 → SPD Class I  
VX → No SPD needed (N/A)

**OX:** Output type  
O0 → No holder needed (N/A)  
O1 → Cable Gland  
O2 → M24  
O3 → M24  
O4 → M24  
O5 → M24

**Country / Whole World**

**Floating:** YES (F) / NO

**P:** Portrait

**L:** Landscape

**10:** 1000V

**15:** 1500V

**TX:** Monitoring Device

TX → No monitoring (N/A)

T2 → TC 24V (24V or 1.3kV)

T3 → TC 24V

T4 → TC 24V

T5 → TC 24V

T6 → TC 24V

T7 → TC 24V

T8 → TC 24V

T9 → TC 24V

T10 → TC 24V

T11 → TC 24V

T12 → TC 24V

T13 → TC 24V

T14 → TC 24V

T15 → TC 24V

T16 → TC 24V

T17 → TC 24V

T18 → TC 24V

T19 → TC 24V

T20 → TC 24V

T21 → TC 24V

T22 → TC 24V

T23 → TC 24V

T24 → TC 24V

T25 → TC 24V

T26 → TC 24V

T27 → TC 24V

T28 → TC 24V

T29 → TC 24V

T30 → TC 24V

T31 → TC 24V

T32 → TC 24V

T33 → TC 24V

T34 → TC 24V

T35 → TC 24V

T36 → TC 24V

T37 → TC 24V

T38 → TC 24V

T39 → TC 24V

T40 → TC 24V

T41 → TC 24V

T42 → TC 24V

T43 → TC 24V

T44 → TC 24V

T45 → TC 24V

T46 → TC 24V

T47 → TC 24V

T48 → TC 24V

T49 → TC 24V

T50 → TC 24V

T51 → TC 24V

T52 → TC 24V

T53 → TC 24V

T54 → TC 24V

T55 → TC 24V

T56 → TC 24V

T57 → TC 24V

T58 → TC 24V

T59 → TC 24V

T60 → TC 24V

T61 → TC 24V

T62 → TC 24V

T63 → TC 24V

T64 → TC 24V

T65 → TC 24V

T66 → TC 24V

T67 → TC 24V

T68 → TC 24V

T69 → TC 24V

T70 → TC 24V

T71 → TC 24V

T72 → TC 24V

T73 → TC 24V

T74 → TC 24V

T75 → TC 24V

T76 → TC 24V

T77 → TC 24V

T78 → TC 24V

T79 → TC 24V

T80 → TC 24V

T81 → TC 24V

T82 → TC 24V

T83 → TC 24V

T84 → TC 24V

T85 → TC 24V

T86 → TC 24V

T87 → TC 24V

T88 → TC 24V

T89 → TC 24V

T90 → TC 24V

T91 → TC 24V

T92 → TC 24V

T93 → TC 24V

T94 → TC 24V

T95 → TC 24V

T96 → TC 24V

T97 → TC 24V

T98 → TC 24V

T99 → TC 24V

T100 → TC 24V

T101 → TC 24V

T102 → TC 24V

T103 → TC 24V

T104 → TC 24V

T105 → TC 24V

T106 → TC 24V

T107 → TC 24V

T108 → TC 24V

T109 → TC 24V

T110 → TC 24V

T111 → TC 24V

T112 → TC 24V

T113 → TC 24V

T114 → TC 24V

T115 → TC 24V

T116 → TC 24V

T117 → TC 24V

T118 → TC 24V

T119 → TC 24V

T120 → TC 24V

T121 → TC 24V

T122 → TC 24V

T123 → TC 24V

T124 → TC 24V

T125 → TC 24V

T126 → TC 24V

T127 → TC 24V

T128 → TC 24V

T129 → TC 24V

T130 → TC 24V

T131 → TC 24V

T132 → TC 24V

T133 → TC 24V

T134 → TC 24V

T135 → TC 24V

T136 → TC 24V

T137 → TC 24V

T138 → TC 24V

T139 → TC 24V

T140 → TC 24V

T141 → TC 24V

T142 → TC 24V

T143 → TC 24V

T144 → TC 24V

T145 → TC 24V

T146 → TC 24V

T147 → TC 24V

T148 → TC 24V

T149 → TC 24V

T150 → TC 24V

T151 → TC 24V

T152 → TC 24V

T153 → TC 24V

T154 → TC 24V

T155 → TC 24V

T156 → TC 24V

T157 → TC 24V

T158 → TC 24V

T159 → TC 24V

T160 → TC 24V

T161 → TC 24V

T162 → TC 24V

T163 → TC 24V

T164 → TC 24V

T165 → TC 24V

T166 → TC 24V

T167 → TC 24V

T168 → TC 24V

T169 → TC 24V

T170 → TC 24V

T171 → TC 24V

T172 → TC 24V

T173 → TC 24V

T174 → TC 24V

T175 → TC 24V

T176 → TC 24V

T177 → TC 24V

T178 → TC 24V

T179 → TC 24V

T180 → TC 24V

T181 → TC 24V

T182 → TC 24V

T183 → TC 24V

T184 → TC 24V

T185 → TC 24V

T186 → TC 24V

T187 → TC 24V

T188 → TC 24V

T189 → TC 24V

T190 → TC 24V

T191 → TC 24V

T192 → TC 24V

T193 → TC 24V

T194 → TC 24V

T195 → TC 24V

T196 → TC 24V

T197 → TC 24V

T198 → TC 24V

T199 → TC 24V

T200 → TC 24V

T201 → TC 24V

T202 → TC 24V

T203 → TC 24V

T204 → TC 24V

T205 → TC 24V

T206 → TC 24V

T207 → TC 24V

T208 → TC 24V

T209 → TC 24V

T210 → TC 24V

T211 → TC 24V

T212 → TC 24V

T213 → TC 24V

T214 → TC 24V

T215 → TC 24V

T216 → TC 24V

T217 → TC 24V

T218 → TC 24V

T219 → TC 24V

T220 → TC 24V

T221 → TC 24V

T222 → TC 24V

T223 → TC 24V

T224 → TC 24V

T225 → TC 24V

T226 → TC 24V

T227 → TC 24V

T228 → TC 24V

T229 → TC 24V

T230 → TC 24V

T231 → TC 24V