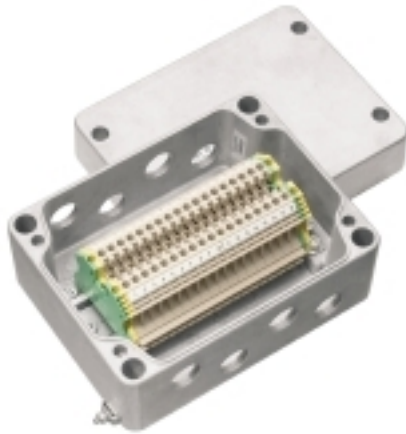


**KLIPPON K5 4M20WCSS EX****Weidmüller Interface GmbH & Co. KG**

Klingenbergstraße 26

D-32758 Detmold

Germany

[www.weidmueller.com](http://www.weidmueller.com)

Various types of terminal boxes are available for installing signal / power supplies or distributors in explosive risk zones. The terminal boxes are explosion-protected equipment approved for use in Ex areas in zones 0, 1, 2 and 20, 21, 22. They are certified in accordance with the latest international standards Ex e, Ex ia and Ex tb. Customer-specific configuration means these terminal boxes are the optimum solution for all applications. Use the product overview to find the right solution for you! Combine the enclosure, with or without threaded holes, a suitable mounting rail or pre-fitted strip terminals. We have put together a small selection for you, but we are happy to configure a bespoke solution for you.

**Features:**

- Available in a wide range of versions to meet customer requirements
- Additional international approvals alongside IECEx and ATEX also available
- Increased quality thanks to the use of established basic products in the Klippon® brand

**General ordering data**

Version	Terminal Box, ATEX II 2GD T85°C Ex e II T6, KLIPPON K5 EX, KL SET 18W4 S, Drill holes side A: 4 x M20x1.5, Drill holes side B: 4 x M20x1.5
Order No.	<a href="#">8000004218</a>
Type	KLIPPON K5 4M20WCSS EX
GTIN (EAN)	4032248986620
Qty.	1 pc(s).
Reference product	<a href="#">9526930000</a>

**KLIPPON K5 4M20WCSS EX****Weidmüller Interface GmbH & Co. KG**

Klingenbergstraße 26

D-32758 Detmold

Germany

[www.weidmueller.com](http://www.weidmueller.com)**Technical data****Dimensions and weights**

Depth	90 mm	Depth (inches)	3.543 inch
Height	130 mm	Height (inches)	5.118 inch
Width	170 mm	Width (inches)	6.693 inch
Net weight	6,644 g		

**Certificate numbers enclosure**

Certificate no. Terminal Box (ATEX)	IBExU12ATEX1145 X	Certificate no. Terminal Box (IECEx)	IECEx IBE 13.0002X
-------------------------------------	-------------------	--------------------------------------	--------------------

**Housing**

Drill holes side A	4 x M20x1.5	Drill holes side B	4 x M20x1.5
Material	Aluminium AlSi12		

**Classifications**

ETIM 6.0	EC002503	ETIM 7.0	EC002503
ETIM 8.0	EC002503	ETIM 9.0	EC002503
ECLASS 9.0	27-18-05-02	ECLASS 9.1	27-18-05-90
ECLASS 10.0	27-18-05-02	ECLASS 11.0	27-18-05-02
ECLASS 12.0	27-18-05-02	ECLASS 13.0	27-18-05-02

**Environmental Product Compliance**

REACH SVHC	Lead 7439-92-1
SCIP	c0b142f1-4049-4b95-bbc3-9959a2d3b09c

**Approvals**

ROHS	Conform
------	---------

**Downloads**

Approval/Certificate/Document of Conformity	<a href="#">IBEXU12ATEX1145X</a> <a href="#">IECEXIBE13.0002X</a>
Catalogues	<a href="#">Catalogues in PDF-format</a>
Brochures	

# KLIPPON K5 4M20WCSS EX

**Weidmüller Interface GmbH & Co. KG**  
Klingenbergstraße 26  
D-32758 Detmold  
Germany

[www.weidmueller.com](http://www.weidmueller.com)

## Drawings

