

**RCM580730****Weidmüller Interface GmbH & Co. KG**

Klingenbergstraße 26

D-32758 Detmold

Germany

[www.weidmueller.com](http://www.weidmueller.com)**Product image**

Similar to illustration

Individual relays within the RIDERSERIES RCM

- 4 CO contacts with hard gold plated contacts
- Optional AC or DC coils
- With test button

**General ordering data**

|            |  |
|------------|--|
| Version    | RIDERSERIES RCM, Relay, Number of contacts: 4, CO contact AgNi gold-plated, Rated control voltage: 230 V AC, Continuous current: 6 A, Plug-in connection, Test button available: Yes |
| Order No.  | <a href="#">7940007637</a>   |
| Type       | RCM580730  |
| GTIN (EAN) | 4032248526345  |
| Qty.       | 10 pc(s).  |

Creation date August 29, 2024 5:40:15 AM CEST

Catalogue status 17.08.2024 / We reserve the right to make technical changes.

RCM580730

Weidmüller Interface GmbH &amp; Co. KG

Klingenbergstraße 26

D-32758 Detmold

Germany

www.weidmueller.com

## Technical data

### Dimensions and weights

|            |         |                 |            |
|------------|---------|-----------------|------------|
| Depth      | 29 mm   | Depth (inches)  | 1.142 inch |
| Height     | 28 mm   | Height (inches) | 1.102 inch |
| Width      | 22.5 mm | Width (inches)  | 0.886 inch |
| Net weight | 29.5 g  |                 |            |

### Temperatures

|                     |  |                       |                |
|---------------------|--|-----------------------|----------------|
| Storage temperature | -40 °C...85 °C                                 | Operating temperature | -40 °C...70 °C |
| Humidity            | 40 °C / 93 % rel. humidity,<br>no condensation |                       |                |

### Rated data UL

|                         |         |
|-------------------------|---------|
| Certificate No. (cURus) | E522350 |
|-------------------------|---------|

### Control side

|                       |          |                  |                         |
|-----------------------|----------|------------------|-------------------------|
| Rated control voltage | 230 V AC | Rated current AC | 4.3 mA                  |
| Power rating          | 1000 mVA | Coil resistance  | 19465 $\Omega \pm 15\%$ |
| Coil tolerance        | 15 %     | Status indicator | No                      |

### Load side

|   |  |   |                                 |
|---|--|---|---------------------------------|
| Rated switching voltage                 | 240 V AC   | Continuous current                      | 6 A                             |
| Max. switching frequency at rated load  | 0.1 Hz   | Max. switching voltage, AC              | 250 V                           |
| Inrush current                          | 12 A / 20 ms   | AC switching capacity (resistive), max. | 1500 VA                         |
| DC switching capacity (resistive), max. | 144 W @ 24 V   | Switch-on delay                         | $\leq 15$ ms                    |
| Switch-off delay                        | $\leq 10$ ms   | Contact type                            | 4 CO contact (AgNi gold-plated) |
| Mechanical service life                 | AC coil $20 \times 10^6$ switching<br>cycles, DC coil $30 \times 10^6$<br>switching cycles | Min. switching power                    | 1 mA @ 1 V                      |

### General data

|                                      |     |                        |  |
|--------------------------------------|-----|------------------------|--|
| Test button available                | Yes | Version of test button | Lockable test button, Mo-<br>mentary test button |
| Mechanical switch position indicator | Yes | Colour                 | Transparent                                      |
| UL 94 flammability rating            | V-2 |                        |  |

### Insulation coordination

|  |                             |   |                                |
|--|-----------------------------|---|--------------------------------|
| Rated voltage  | 250 V                       | Pollution severity                                  | 2                              |
| Surge voltage category   | III                         | Insulating material group                           | IIIa                           |
| Clearance and creepage distances for<br>control side - load side | $\geq 4$ mm                 | Dielectric strength for control side - load<br>side | 2.5 kV <sub>eff</sub> / 1 Min. |
| Dielectric strength of neighbouring con-<br>tacts                | 2 kV <sub>eff</sub> / 1 min | Dielectric strength of open contact                 | 1.2 kV <sub>eff</sub> / 1 min. |
| Impulse withstand voltage  | 5 kV (1.2/50 $\mu$ s)       | Protection degree                                   | IP20                           |

### Further details of approvals / standards

|                         |                |                       |          |
|-------------------------|----------------|-----------------------|----------|
| Certificate No. (CSA)   | 249409-2426937 | Certificate No. (VDE) | 40011762 |
| Certificate No. (cURus) | E522350        |                       |          |

RCM580730

Weidmüller Interface GmbH &amp; Co. KG

Klingenbergstraße 26

D-32758 Detmold

Germany

[www.weidmueller.com](http://www.weidmueller.com)

## Technical data

## Connection data

|                        |                    |
|------------------------|--------------------|
| Wire connection method | Plug-in connection |
|------------------------|--------------------|

## Classifications

|             |             |             |             |
|-------------|-------------|-------------|-------------|
| ETIM 6.0    | EC001437    | ETIM 7.0    | EC001437    |
| ETIM 8.0    | EC001437    | ETIM 9.0    | EC001437    |
| ECLASS 9.0  | 27-37-16-01 | ECLASS 9.1  | 27-37-16-01 |
| ECLASS 10.0 | 27-37-16-01 | ECLASS 11.0 | 27-37-16-01 |
| ECLASS 12.0 | 27-37-16-01 | ECLASS 13.0 | 27-37-16-01 |
| ECLASS 14.0 | 27-37-16-01 |             |             |

## Environmental Product Compliance

|                        |                             |
|------------------------|-----------------------------|
| REACH SVHC             | /                           |
| RoHS Compliance Status | Compliant without exemption |

## Approvals

Approvals



|                         |            |
|-------------------------|------------|
| ROHS                    | Conform    |
| UL File Number Search   | UL Website |
| Certificate No. (cURus) | E522350    |

## Downloads

|   |   |
|---|---|
| Approval/Certificate/Document of Conformity | <a href="#">EU Konformitätserklärung / EU Declaration of Conformity</a> |
| Engineering Data                            | <a href="#">CAD data – STEP</a>   |
| Catalogues                                  | <a href="#">Catalogues in PDF-format</a>                                |
| Brochures                                   |   |

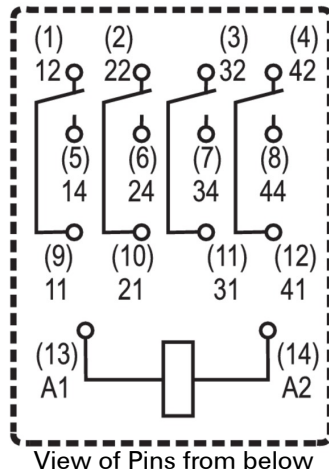
**RCM580730**

**Weidmüller Interface GmbH & Co. KG**  
Klingenbergstraße 26  
D-32758 Detmold  
Germany

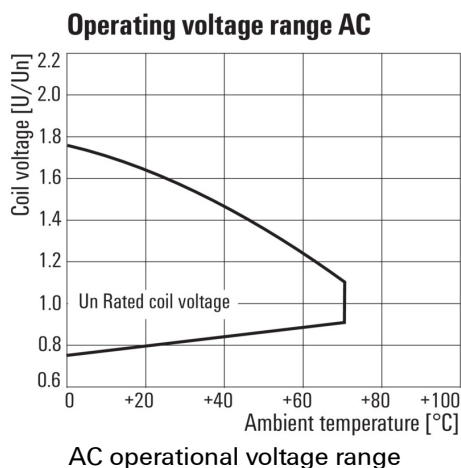
www.weidmueller.com

## Drawings

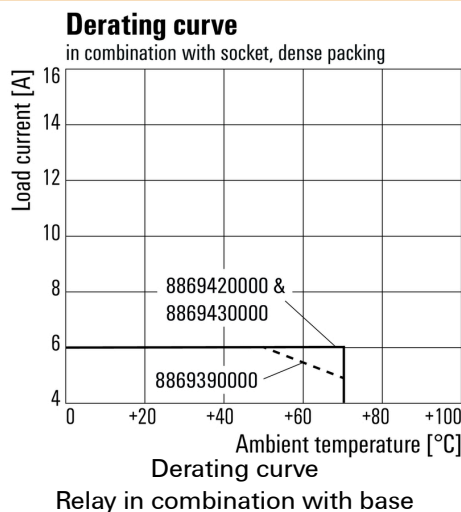
### Wiring diagram



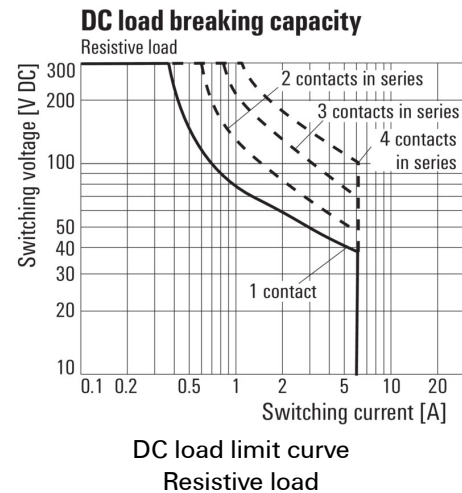
### Graph



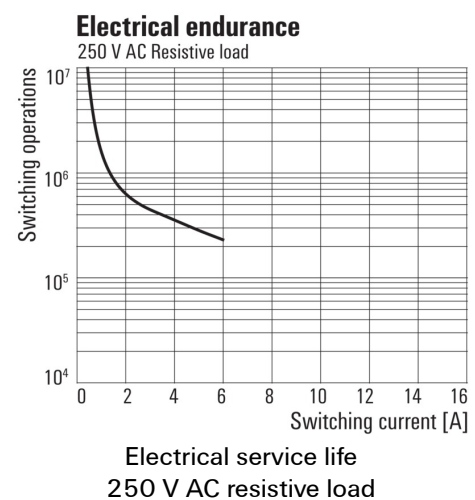
### Graph



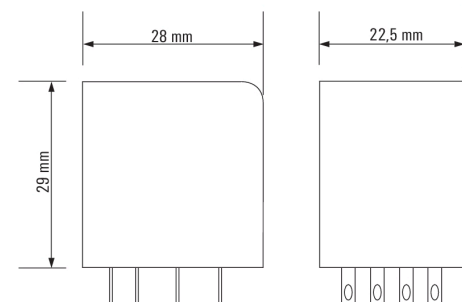
### Graph



### Graph



### Dimensional drawing



## RCM580730

Weidmüller Interface GmbH &amp; Co. KG

Klingenbergstraße 26

D-32758 Detmold

Germany

www.weidmueller.com

## Accessories

## Cross-connection for socket with screw connection

Cross-connection for the sockets in the D-SERIES DRM.



## General ordering data

|            |                            |                                  |
|------------|----------------------------|----------------------------------|
| Type       | SCM-I QV S                 | Version                          |
| Order No.  | <a href="#">1132080000</a> | RIDERSERIES RCM, Cross-connector |
| GTIN (EAN) | 4032248912193              |                                  |
| Qty.       | 10 pc(s).                  |                                  |

## Protection module



Pluggable protective modules for the RIDERSERIES RCI / RCM relay sockets, with optional protective functions.

- Optional with free-wheeling diode, protective varistor, load resistor or RC filter

## General ordering data

|            |                            |   |
|------------|----------------------------|---|
| Type       | RIM-I 1 R 110/230V         | Version   |
| Order No.  | <a href="#">8870830000</a> | RIDERSERIES, Load, Rated control voltage: 110...230 V UC, Plug-in connection              |
| GTIN (EAN) | 4032248631674              |   |
| Qty.       | 10 pc(s).                  |   |
| Type       | RIM-I 1 6/230V             | Version   |
| Order No.  | <a href="#">8869580000</a> | RIDERSERIES, Free-wheeling diode, Rated control voltage: 6...230 V DC, Plug-in connection |
| GTIN (EAN) | 4032248614523              |   |
| Qty.       | 10 pc(s).                  |   |
| Type       | RIM-I 3 110/230VAC RC      | Version   |
| Order No.  | <a href="#">8869790000</a> | RIDERSERIES, RC filter, Rated control voltage: 110...230 V UC, Plug-in connection         |
| GTIN (EAN) | 4032248606337              |   |
| Qty.       | 10 pc(s).                  |   |
| Type       | RIM-I 3 230VAC RC          | Version   |
| Order No.  | <a href="#">1172210000</a> | RIDERSERIES, RC filter, Rated control voltage: 230 V UC, Plug-in connection               |
| GTIN (EAN) | 4032248964420              |   |
| Qty.       | 10 pc(s).                  |   |

## RCM580730

Weidmüller Interface GmbH &amp; Co. KG

Klingenbergstraße 26

D-32758 Detmold

Germany

www.weidmueller.com

## Accessories

## Blank



ESG is the tried-and-tested marker in MultiCard format for use on many well-known electrical devices. The result is high-quality device marking with a high-contrast appearance.

Various types are available for devices from manufacturers like Siemens, ABB, Beckhoff etc.

Advantages at a glance:

- Tags for universal usage, self-adhesive or clip-on tags, depending on type
- For aligned equipment, e.g. circuit breakers, we supply ESG markers for clipping onto tag rails
- Individual laser-quality printing according to specifications

**For custom printing:** Please send us a file of our labeling software M-Print PRO or M-Print PRO Online (without installation) for your labeling specifications.

## General ordering data

|            |                            |   |
|------------|----------------------------|---|
| Type       | ESG 9/26 SCM-I MC NE WS    | Version   |
| Order No.  | <a href="#">2558330000</a> | ESG, Device markers x 26 mm, PA 66, Colour: white |
| GTIN (EAN) | 4050118569049              |   |
| Qty.       | 80 pc(s).                  |   |

## Retaining clips



Retaining clip for RIDERSERIES RCM relays

- Metal and plastic retaining clip

## General ordering data

|            |                            |                                 |
|------------|----------------------------|---------------------------------|
| Type       | SCM-I CLIP P               | Version                         |
| Order No.  | <a href="#">8869440000</a> | RIDERSERIES RCM, Retaining clip |
| GTIN (EAN) | 4032248614295              |                                 |
| Qty.       | 10 pc(s).                  |                                 |
| Type       | SCM-I CLIP M               | Version                         |
| Order No.  | <a href="#">8869450000</a> | RIDERSERIES RCM, Retaining clip |
| GTIN (EAN) | 4032248614301              |                                 |
| Qty.       | 10 pc(s).                  |                                 |
| Type       | SCM-I CLIP N               | Version                         |
| Order No.  | <a href="#">8875620000</a> | RIDERSERIES RCM, Retaining clip |
| GTIN (EAN) | 4032248608577              |                                 |
| Qty.       | 10 pc(s).                  |                                 |

**RCM580730****Weidmüller Interface GmbH & Co. KG**

Klingenbergstraße 26

D-32758 Detmold

Germany

[www.weidmueller.com](http://www.weidmueller.com)**Accessories****ESG 6/17****Guaranteed long service life: ESG**

The multi-colour and multi-format labels have a strong adhesive layer to ensure the best possible adhesion to the underlying surface. Double laminated polyester makes the basic material very thin and yet extremely tear-resistant.

**Your benefits with MultiMark**

- "Different materials for various requirements"
- Can be used with equipment from many manufacturers
- Device markers with a familiar design

**General ordering data**

|            |                            |                                       |
|------------|----------------------------|---------------------------------------|
| Type       | ESG 6/17 MM WS             | Version                               |
| Order No.  | <a href="#">2005100000</a> | ESG, Device markers, 6 x 17 mm, white |
| GTIN (EAN) | 4050118390728              |                                       |
| Qty.       | 3,000 pc(s).               |                                       |

**Protective varistor**

Pluggable protective modules for the RIDERSERIES RCI / RCM relay sockets, with optional protective functions.

- With protective varistor
- For UC supply voltage

**General ordering data**

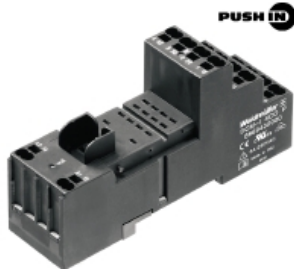
|            |                            |  |
|------------|----------------------------|--|
| Type       | RIM-I 4 230VUC VAR         | Version  |
| Order No.  | <a href="#">8869750000</a> | RIDERSERIES, Protective varistor, Rated control voltage: 230 V UC, |
| GTIN (EAN) | 4032248606368              | Plug-in connection   |
| Qty.       | 10 pc(s).                  |  |

**RCM580730****Weidmüller Interface GmbH & Co. KG**

Klingenbergstraße 26

D-32758 Detmold

Germany

[www.weidmueller.com](http://www.weidmueller.com)**Accessories****Sockets**

relays sockets for RIDERSERIES RCM relays

- 2, 3 and 4 CO contacts
- Screw and PUSH IN connection
- Standard and low heights

**General ordering data**

|            |                            |   |
|------------|----------------------------|---|
| Type       | SCM-H 4CO N                | Version   |
| Order No.  | <a href="#">8869390000</a> | RIDERSERIES RCM, Relay socket, Number of contacts: 4, CO contact, |
| GTIN (EAN) | 4032248614257              | Continuous current: 6 A, Screw connection                         |
| Qty.       | 10 pc(s).                  |   |
| Type       | SCM-H 4CO                  | Version   |
| Order No.  | <a href="#">8869420000</a> | RIDERSERIES RCM, Relay socket, Number of contacts: 4, CO contact, |
| GTIN (EAN) | 4032248614271              | Continuous current: 6 A, Screw connection                         |
| Qty.       | 10 pc(s).                  |   |
| Type       | SCM-H 4CO P                | Version   |
| Order No.  | <a href="#">8869430000</a> | RIDERSERIES RCM, Relay socket, Number of contacts: 4, CO contact, |
| GTIN (EAN) | 4032248614288              | Continuous current: 6 A, PUSH IN                                  |
| Qty.       | 10 pc(s).                  |   |

**Cross-connection for socket with PUSH IN connection**

Cross-connection for the sockets in the RIDERSERIES RCM

**General ordering data**

|            |                            |                                  |
|------------|----------------------------|----------------------------------|
| Type       | SCM-H QV P                 | Version                          |
| Order No.  | <a href="#">8870850000</a> | RIDERSERIES RCM, Cross-connector |
| GTIN (EAN) | 4032248631698              |                                  |
| Qty.       | 10 pc(s).                  |                                  |



## RCM580730

Weidmüller Interface GmbH &amp; Co. KG

Klingenbergstraße 26

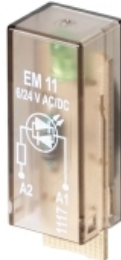
D-32758 Detmold

Germany

www.weidmueller.com

## Accessories

## LED



Pluggable protective modules for the RIDERSERIES RCI / RCM relay sockets, with optional protective functions.

- Optional with green or red LED
- For UC supply voltage

## General ordering data

|            |                            |   |
|------------|----------------------------|---|
| Type       | RIM-I 3 110/230VUC         | Version   |
| Order No.  | <a href="#">8869650000</a> | RIDERSERIES, LED module, Rated control voltage: 110...230 V UC, |
| GTIN (EAN) | 4032248614592              | Plug-in connection  |
| Qty.       | 10 pc(s).                  |   |
| Type       | RIM-I 3 110/230VUC GN      | Version   |
| Order No.  | <a href="#">8869660000</a> | RIDERSERIES, LED module, Rated control voltage: 110...230 V UC, |
| GTIN (EAN) | 4032248614721              | Plug-in connection  |
| Qty.       | 10 pc(s).                  |   |

## ESG 6/15



## Guaranteed long service life: ESG

The multi-colour and multi-format labels have a strong adhesive layer to ensure the best possible adhesion to the underlying surface. Double laminated polyester makes the basic material very thin and yet extremely tear-resistant.

## Your benefits with MultiMark

- "Different materials for various requirements"
- Can be used with equipment from many manufacturers
- Device markers with a familiar design

## General ordering data

|            |                            |                                       |
|------------|----------------------------|---------------------------------------|
| Type       | ESG 6/15 MM WS             | Version                               |
| Order No.  | <a href="#">2619940000</a> | ESG, Device markers, 6 x 15 mm, white |
| GTIN (EAN) | 4050118626148              |                                       |
| Qty.       | 3,000 pc(s).               |                                       |

## RCM580730

Weidmüller Interface GmbH &amp; Co. KG

Klingenbergstraße 26

D-32758 Detmold

Germany

[www.weidmueller.com](http://www.weidmueller.com)

## Drawings

## Miscellaneous

|                  |   | RCM |  |  |  |  | with LED   |                          |
|------------------|---|-----|--|--|--|--|--|--------------------------|
| Type             | RIDER Control Multiple  |     |  |  |  |  | Coil voltage   | LED + diode              |
| Type of contact  | 2 2CO<br>3 3CO<br>5 4CO   |     |  |  |  |  | 006 6 V DC L06<br>012 12 V DC L12<br>024 24 V DC L24<br>048 48 V DC L48<br>060 60 V DC L60<br>110 110 V DC M10<br>220 220 V DC N20 | AB2<br>AC4<br>AE8<br>BB0 |
| Contact material | 7 AgNi 90/10 with test button<br>8 AgNi 90/10 hgp, with test button |     |  |  |  |  | 506 6 V AC R06<br>512 12 V AC R12<br>524 24 V AC R24<br>548 48 V AC R48<br>615 115 V AC S15<br>730 230 V AC T30                    |                          |
|                  |   |     |  |  |  |  | Type of construction   | 0 Standard, 2,8mm Faston |

Type codes