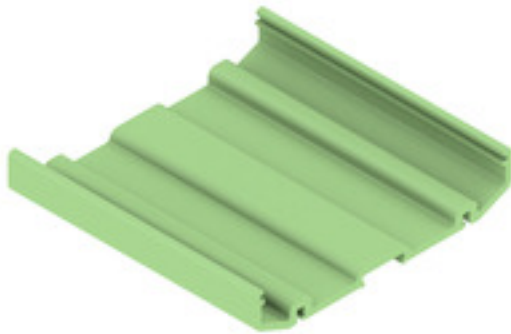


**PF RS 100 GN 2000MM****Weidmüller Interface GmbH & Co. KG**

Klingenbergstraße 26

D-32758 Detmold

Germany

[www.weidmueller.com](http://www.weidmueller.com)**Flexible - More flexible - Profilform**

Modular housings in profile form - the flexible modular system comprising coloured and transparent plastic profiles and carrier modules

The combination of standard pitches mounted side by side in any arrangement and metre goods cut accurate to the millimetre creates the perfect balance between flexibility and economic efficiency:

- Pitch profiles with standard widths ranging from 5mm to 45mm allow the mounting of all standard PCB formats.
- Variable heights ensure maximum component density, even with larger electronics components.
- The different installation variations mean that mounting the enclosure directly is as easy as clipping components onto the terminal rail
- Solid hoods protect the module reliably from external influences

The recipe for success: variable profile + modular form components = flexible enclosure concept that offers a large surface area for the PCBs.

The modular concept is designed for modules with high space requirements and suitable for small component quantities and different widths.

**General ordering data**

Version	Mounting rail housing Pale green, Extruded profile, Width: 2000 mm
Order No.	<a href="#">4347570000</a>
Type	PF RS 100 GN 2000MM
GTIN (EAN)	4032248945306
Qty.	2 m

## PF RS 100 GN 2000MM

Weidmüller Interface GmbH &amp; Co. KG

Klingenbergstraße 26

D-32758 Detmold

Germany

www.weidmueller.com

## Technical data

## Dimensions and weights

Depth	19.5 mm	Depth (inches)	0.768 inch
Height	104 mm	Height (inches)	4.094 inch
Width	2,000 mm	Width (inches)	78.74 inch
Net weight	550 g		

## Material data

Insulating material	PVC	UL 94 flammability rating	V-0
---------------------	-----	---------------------------	-----

## General data

Colour	Pale green	Colour chart (similar)	RAL 6021
Encapsulation option	No	Protection degree	IP20 in installed state

## Classifications

ETIM 7.0	EC002779	ETIM 8.0	EC002779
ETIM 9.0	EC002779	ECLASS 11.0	27-18-27-92
ECLASS 12.0	27-18-27-92	ECLASS 13.0	27-19-06-01

## Environmental Product Compliance

REACH SVHC	/
------------	---

## Important note

Product information	<p>3 heights are available for the cover profile and the end plates:  TS mounting without cover: TS 32 = 45 mm, TS35x7.5 = 40.5 mm  TS mounting with low cover: TS 32 = 89 mm, TS 35x7.5 = 84.5 mm  TS mounting with high cover: TS 32 = 121 mm, TS 35x7.5 = 116.5 mm  Direct mounting, without/low/high cover: 24 / 69 / 99 mm  Dimensions of the PCB  Thickness: 1.6 (±0.2) mm, width: 100 (+0.5) mm  Dimension of the RS section = length of the printed circuit board – 4.5 mm  Dimension of ADP section = PCB length - 1 mm  Example:  PCB length 160 mm, RS = 155.5 mm, ADP = 159 mm"</p>
---------------------	---

## Approvals

ROHS	Conform
------	---------

## Downloads

Engineering Data	<a href="#">CAD data – STEP</a>
Catalogues	<a href="#">Catalogues in PDF-format</a>
Brochures	<a href="#">FL ANALO.SIGN.CONV. EN</a> <a href="#">MB DEVICE MANUF. EN</a> <a href="#">FL MACHINE SAFETY EN</a> <a href="#">FL 72H SAMPLE SER EN</a> <a href="#">PO OMNIMATE EN</a>

## PF RS 100 GN 2000MM

**Weidmüller Interface GmbH & Co. KG**  
Klingenbergstraße 26  
D-32758 Detmold  
Germany

[www.weidmueller.com](http://www.weidmueller.com)

## Drawings

