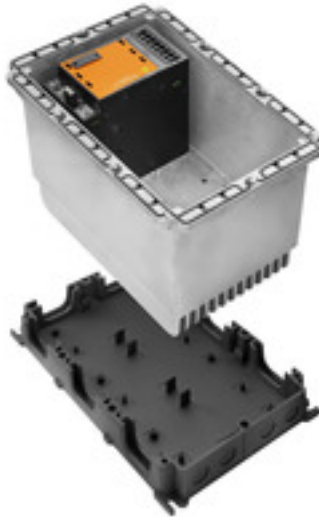


FP PRO TOP3 48/10 3M**Weidmüller Interface GmbH & Co. KG**

Klingenbergstraße 26

D-32758 Detmold

Germany

www.weidmueller.com

PROtop power supplies offer a wide range of functions with many advantages.

These include high energy efficiency, outstanding power reserves, high reliability and optional communication capability. PROtop also supports direct parallel connection with load balancing. With the possibility of integrating our PROtop power supplies into the FieldPower® system, the entire range of functions becomes available in the field – with all the advantages of the FieldPower® modular system.

General ordering data

| | |
|------------|---|
| Version | FieldPower® power supply unit, IP65, in closed state, in complete state, 10A, 48 V, DC, PUSH IN |
| Order No. | 2887630000 |
| Type | FP PRO TOP3 48/10 3M |
| GTIN (EAN) | 4064675859888 |
| Qty. | 1 pc(s). |

FP PRO TOP3 48/10 3M

Weidmüller Interface GmbH & Co. KG

Klingenbergstraße 26

D-32758 Detmold

Germany

www.weidmueller.com

Technical data

Dimensions and weights

| | | | |
|------------|---------|-----------------|------------|
| Depth | 220 mm | Depth (inches) | 8.661 inch |
| Height | 196 mm | Height (inches) | 7.717 inch |
| Width | 196 mm | Width (inches) | 7.717 inch |
| Net weight | 5,192 g | | |

Temperatures

| | | | |
|-----------------------------|---|-----------------------|---|
| Storage temperature | -40 °C...85 °C | Operating temperature | -25 °C...45 °C |
| Operating temperature range | -25 °C ... +50 °C (regard derating) Start up ≥ -40 °C | Humidity | 35...85%, non condensing and non freezing |

Input

| | | | |
|--------------------------|--|------------------------|---|
| AC current consumption | 1,5 A @ 400 V DC / 2 A @ 320 V AC | AC input voltage range | 3 x 320...3 x 575 V AC / 2 x 360...2 x 575 V AC |
| DC input voltage range | 450...800 V DC (max. 500 V DC acc. to UL508) | Frequency range AC | 45...65 Hz |
| Recommended back-up fuse | 3 - 5 A, Char C | Surge protection | Varistor |
| Inrush current | Max. 10 A | Input fuse (internal) | No |

Output

| | | | |
|--------------------------|---------------|---|--------------------------------|
| Adjustable rated current | No | Output current | 10A |
| Output power | 480 W | Output voltage | 48 V |
| Output voltage type | DC | Output voltage, max. | 56 V |
| Output voltage, min. | 45 V | Output voltage, note | (adjustable via potentiometer) |
| Switch-on delay | 1 s | Triggering characteristic | see characteristic curve |
| Rated output voltage | 48 V DC ± 1 % | Nominal output current for U _{nom} | 10 A @ 60 °C |

General data

| | | | |
|------------------------|---|--------------------------|---------------------|
| Humidity | 35...85%, non condensing and non freezing | Installation advice | Lid screws included |
| Protection degree | IP65, in closed state, in complete state | Short-circuit protection | Yes, internal |
| Surge voltage category | III, II | | |

Insulation coordination

| | |
|------------------------|---------|
| Surge voltage category | III, II |
|------------------------|---------|

Connection data (input)

| | |
|-------------------|--------------|
| Connection system | IDC terminal |
|-------------------|--------------|

Classifications

| | | | |
|-------------|-------------|-------------|-------------|
| ETIM 6.0 | EC002540 | ETIM 7.0 | EC002540 |
| ETIM 8.0 | EC002540 | ETIM 9.0 | EC002540 |
| ECLASS 9.1 | 27-04-07-01 | ECLASS 10.0 | 27-04-07-01 |
| ECLASS 11.0 | 27-04-07-01 | ECLASS 12.0 | 27-04-07-01 |
| ECLASS 13.0 | 27-04-90-02 | | |

FP PRO TOP3 48/10 3M**Weidmüller Interface GmbH & Co. KG**

Klingenbergstraße 26

D-32758 Detmold

Germany

www.weidmueller.com**Technical data****Environmental Product Compliance**

| | |
|------------|---|
| REACH SVHC | Lead 7439-92-1 Potassium perfluorobutane sulfonate 29420-49-3 |
| SCIP | 7645f3b1-6db9-495d-9e21-ab1d894aff05 |

Downloads

| | |
|---|---|
| Approval/Certificate/Document of Conformity | Manufacturer's Declaration FieldPower® PROtop |
| User Documentation | Manual FieldPower® PROtop |
| Catalogues | Catalogues in PDF-format |

FP PRO TOP3 48/10 3M

Weidmüller Interface GmbH & Co. KG
Klingenbergstraße 26
D-32758 Detmold
Germany

www.weidmueller.com

Drawings



FP PRO TOP3 48/10 3M

Weidmüller Interface GmbH & Co. KG

Klingenbergstraße 26

D-32758 Detmold

Germany

www.weidmueller.com

Accessories

IP68 version



In addition to the extensive range of enclosures, Weidmüller offers a variety of cable glands for a wide range of applications.

The cable glands made of brass, plastic and stainless steel meet the most various IP protection classes to suit any industrial enclosure.

Depending on the series of cable glands and the application, the cable glands are approved and tested according to VDE, UL, UR, cULus, DNV GL or EN 45545.

General ordering data

| | | |
|------------|----------------------------|---|
| Type | VG M20 - K 68 | Version |
| Order No. | 2811470000 | VG K (standard plastic cable gland), Cable glands, straight, M 20, 10 mm, OD min. 10 - OD max. 14 mm, IP54, IP66, IP67, IP68 - 5 bar (30 min.), Polyamide 6 |
| GTIN (EAN) | 4064675292227 | |
| Qty. | 50 pc(s). | |
| Type | VG M20-1/K68 | Version |
| Order No. | 1772300000 | VG K (standard plastic cable gland), Cable glands, straight, M 20, 10 mm, OD min. 6 - OD max. 12 mm, IP54, IP66, IP67, IP68 - 5 bar (30 min.), Polyamide 6 |
| GTIN (EAN) | 4032248129966 | |
| Qty. | 50 pc(s). | |

Fuse plug



Power distribution using uncut cables with cross-sections from 1.5 to 6 mm².

Power supply / T-branch tap via PUSH IN connection (0.5 to 10 mm²) and/or plug-in connection (0.5 to 4 mm²).

Coloured markings provide clear assignment of wires.

- Power supply
- Power distribution
- Power branching

General ordering data

| | | |
|------------|----------------------------|---|
| Type | PTSI 4/LD 36V AC/DC | Version |
| Order No. | 1252210000 | Field Power® plug-in connector, Fuse, IP20, Polyamide, PUSH IN, Number of poles : 5 |
| GTIN (EAN) | 4050118044331 | |
| Qty. | 1 pc(s). | |
| Type | PTSI 4/LD 400V AC | Version |
| Order No. | 1961770000 | Field Power® plug-in connector, Fuse, IP20, Polyamide, PUSH IN, Number of poles : 5 |
| GTIN (EAN) | 4032248641765 | |
| Qty. | 1 pc(s). | |

FP PRO TOP3 48/10 3M

Weidmüller Interface GmbH & Co. KG

Klingenbergstraße 26

D-32758 Detmold

Germany

www.weidmueller.com

Accessories

Plug-in connector



Power distribution using uncut cables with cross-sections from 1.5 to 6 mm².

Power supply / T-branch tap via PUSH IN connection (0.5 to 10 mm²) and/or plug-in connection (0.5 to 4 mm²).

Coloured markings provide clear assignment of wires.

- Power supply
- Power distribution
- Power branching

General ordering data

| | | |
|------------|----------------------------|---|
| Type | PTS 4 DC | Version |
| Order No. | 1131730000 | Field Power® plug-in connector, DC, IP20, Polyamide, PUSH IN, |
| GTIN (EAN) | 4032248912117 | Number of poles : 5 |
| Qty. | 10 pc(s). | |
| Type | PTDS 4 | Version |
| Order No. | 1952130000 | Field Power® plug-in connector, 3-phase AC, IP20, Polyamide, PUSH |
| GTIN (EAN) | 4032248632084 | IN, Number of poles : 2 x 5 |
| Qty. | 10 pc(s). | |
| Type | PTS 4 | Version |
| Order No. | 1952120000 | Field Power® plug-in connector, 3-phase AC, IP20, Polyamide, PUSH |
| GTIN (EAN) | 4032248632909 | IN, Number of poles : 5 |
| Qty. | 10 pc(s). | |
| Type | PTDS 4 DC | Version |
| Order No. | 1009990000 | Field Power® plug-in connector, DC, IP20, Polyamide, PUSH IN, |
| GTIN (EAN) | 4032248715244 | Number of poles : 2 x 5 |
| Qty. | 10 pc(s). | |

Adapters

**HQ adapter for FieldPower®**

Tool-free installation like a FieldPower cable seal

Suitable for the HQ 4/2, HQ 8 and HQ 17 plug-in connector inserts

Optionally with lockable protective cover (protection against being switched on again, in accordance with EN 60204-1)

General ordering data

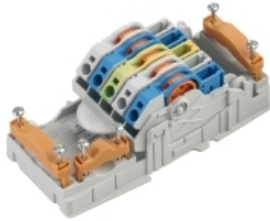
| | | |
|------------|----------------------------|---|
| Type | BG ARGH HQP ALU PT6 | Version |
| Order No. | 1532200000 | Adapter, Field Power® sealing insert, HQ adapter, IP65, with |
| GTIN (EAN) | 4050118337433 | corresponding enclosure, Polycarbonate, glass fibre reinforced, |
| Qty. | 1 pc(s). | lockable: No |
| Type | BG ARGH HQP ALU PT6 CS | Version |
| Order No. | 1532210000 | Adapter, Field Power® sealing insert, HQ adapter, IP65, with |
| GTIN (EAN) | 4050118337600 | corresponding enclosure, Polycarbonate, glass fibre reinforced, |
| Qty. | 1 pc(s). | lockable: Yes |

FP PRO TOP3 48/10 3M**Weidmüller Interface GmbH & Co. KG**

Klingenbergstraße 26

D-32758 Detmold

Germany

www.weidmueller.com**Accessories****DC**

Power distribution using uncut cables with cross-sections from 1.5 to 6 mm².

Power supply / T-branch tap via PUSH IN connection (0.5 to 10 mm²) and/or plug-in connection (0.5 to 4 mm²).

Coloured markings provide clear assignment of wires.

- Power supply
- Power distribution
- Power branching

General ordering data

| | | |
|------------|----------------------------|--|
| Type | PT6 DC | Version |
| Order No. | 1126840000 | FieldPower® contact element, DC, IP20, Insulation displacement |
| GTIN (EAN) | 4032248908462 | connection (IDC), PUSH IN, Number of poles : 5 |
| Qty. | 1 pc(s). | |

Plastic lock nuts, grey

In addition to cable glands for a wide range of applications, the product portfolio is rounded off by plugs, pressure compensation elements, adaptors and the corresponding accessories such as locknuts, sealing rings, flat washers and earthing rings.

General ordering data

| | | |
|------------|----------------------------|---|
| Type | SKMU M20 - K GR | Version |
| Order No. | 1772460000 | SKMU PA (plastic locknut), Locknut, M 20, 6 mm, Polyamid 6 (PA6 - |
| GTIN (EAN) | 4032248130207 | GF30) |
| Qty. | 100 pc(s). | |

FP PRO TOP3 48/10 3M

Weidmüller Interface GmbH & Co. KG

Klingenbergstraße 26

D-32758 Detmold

Germany

www.weidmueller.com

Accessories

DMS PRO



Weidmüller torque screwdrivers have an ergonomic design and are therefore ideal for use with one hand. They can be used without causing fatigue in all installation positions. Apart from that, they incorporate an automatic torque limiter and have a good reproducibility accuracy.

General ordering data

| | | |
|------------|----------------------------|---------------|
| Type | DMS PRO | Version |
| Order No. | 1479120000 | Mounting tool |
| GTIN (EAN) | 4050118287011 | |
| Qty. | 1 pc(s). | |

Seals


Intelligent cabling solutions can save you valuable time and money.

The FieldPower® modular system contains the right solution for every cabling task.

Foldable seals for the use of pre-assembled cables

Seals available with M16 and M20 connection thread
Integration of operating and signalling devices into the seal possible

General ordering data

| | | |
|------------|----------------------------|--|
| Type | RKDG D11 PT6 | Version |
| Order No. | 4323210000 | Field Power® sealing insert, Foldable seal, IP65 with corresponding |
| GTIN (EAN) | 4032248641215 | housing, IP65, with corresponding enclosure, EPDM |
| Qty. | 10 pc(s). | |
| Type | RKDGE D4X4 PT6 | Version |
| Order No. | 2443760000 | Field Power® sealing insert, Slotted sealing insert, IP54, in |
| GTIN (EAN) | 4050118457643 | combination with RKDG D17 PT6, with corresponding enclosure, TPE- |
| Qty. | 10 pc(s). | V |
| Type | RKDG D15 PT6 | Version |
| Order No. | 4323220000 | Field Power® sealing insert, Foldable seal, IP65 with corresponding |
| GTIN (EAN) | 4032248641222 | housing, IP65, with corresponding enclosure, EPDM |
| Qty. | 10 pc(s). | |
| Type | RKDGE D2X6,5 PT6 | Version |
| Order No. | 2443800000 | Field Power® sealing insert, Slotted sealing insert, IP54, in |
| GTIN (EAN) | 4050118457704 | combination with RKDG D17 PT6, with corresponding enclosure, TPE- |
| Qty. | 10 pc(s). | V |
| Type | RKDG D18 WG PT6 | Version |
| Order No. | 2491870000 | Field Power® sealing insert, Seal, IP54, with corresponding enclosure, |
| GTIN (EAN) | 4050118501537 | EPDM |
| Qty. | 10 pc(s). | |

FP PRO TOP3 48/10 3M

Weidmüller Interface GmbH & Co. KG

Klingenbergstraße 26

D-32758 Detmold

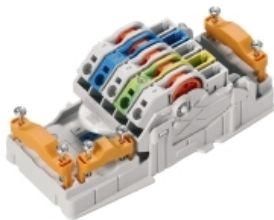
Germany

www.weidmueller.com

Accessories

| | | |
|------------|----------------------------|--|
| Type | RKDG D13 PT6 | Version |
| Order No. | 4323230000 | Field Power® sealing insert, Foldable seal, IP65 with corresponding |
| GTIN (EAN) | 4032248641239 | housing, IP65, with corresponding enclosure, EPDM |
| Qty. | 10 pc(s). | |
| Type | DG D0 PT6 | Version |
| Order No. | 4323240000 | Field Power® sealing insert, Blank seal, IP65, with corresponding |
| GTIN (EAN) | 4032248641246 | enclosure, EPDM |
| Qty. | 10 pc(s). | |
| Type | DG M16 PT6 | Version |
| Order No. | 2545540000 | Field Power® sealing insert, Seal with connection thread, IP65, with |
| GTIN (EAN) | 4050118555523 | corresponding enclosure, EPDM |
| Qty. | 1 pc(s). | |
| Type | RKDG D17 PT6 | Version |
| Order No. | 4324010000 | Field Power® sealing insert, Foldable seal, IP65 with corresponding |
| GTIN (EAN) | 4032248641284 | housing, IP65, with corresponding enclosure, EPDM |
| Qty. | 10 pc(s). | |
| Type | RKDG 2XD8.5 WG PT6 | Version |
| Order No. | 1114530000 | Field Power® sealing insert, Seal, IP54, with corresponding enclosure, |
| GTIN (EAN) | 4032248892624 | EPDM |
| Qty. | 10 pc(s). | |
| Type | RKDG D9 PT6 | Version |
| Order No. | 4329610000 | Field Power® sealing insert, Foldable seal, IP65 with corresponding |
| GTIN (EAN) | 4032248686887 | housing, IP65, with corresponding enclosure, EPDM |
| Qty. | 10 pc(s). | |
| Type | RKDG D24 WG PT6 | Version |
| Order No. | 1069060000 | Field Power® sealing insert, Seal, IP54, with corresponding enclosure, |
| GTIN (EAN) | 4032248827053 | EPDM |
| Qty. | 10 pc(s). | |
| Type | DG M20 PT6 | Version |
| Order No. | 2545550000 | Field Power® sealing insert, Seal with connection thread, IP65, with |
| GTIN (EAN) | 4050118555530 | corresponding enclosure, EPDM |
| Qty. | 1 pc(s). | |

AC



Power distribution using uncut cables with cross-sections from 1.5 to 6 mm².

Power supply / T-branch tap via PUSH IN connection (0.5 to 10 mm²) and/or plug-in connection (0.5 to 4 mm²).

Coloured markings provide clear assignment of wires.

- Power supply
- Power distribution
- Power branching

General ordering data

| | | |
|------------|----------------------------|--|
| Type | PT6 | Version |
| Order No. | 1957620000 | FieldPower® contact element, AC, IP20, Insulation displacement |
| GTIN (EAN) | 4032248642489 | connection (IDC), PUSH IN, Number of poles : 5 |
| Qty. | 1 pc(s). | |

FP PRO TOP3 48/10 3M

Weidmüller Interface GmbH & Co. KG
Klingenbergstraße 26
D-32758 Detmold
Germany

www.weidmueller.com

Accessories

Terminal rails for lower parts of enclosure



Extensive range of accessories for the FieldPower® boxes.
Cable seals, terminal rails, locking elements and much more.

General ordering data

| | | |
|------------|----------------------------|--|
| Type | TS 35 PT6 | Version |
| Order No. | 1170690000 | Field Power® terminal rail, Steel, galvanized, 54 mm, for base part |
| GTIN (EAN) | 4032248962532 | |
| Qty. | 10 pc(s). | |
| Type | FP ENC DR07 230 3B | Version |
| Order No. | 2633460000 | Field Power® terminal rail, Steel, galvanized, 230 mm, for base part |
| GTIN (EAN) | 4050118664409 | |
| Qty. | 5 pc(s). | |
| Type | FP ENC DR07 142 XB | Version |
| Order No. | 2633450000 | Field Power® terminal rail, Steel, galvanized, 142 mm, for base part |
| GTIN (EAN) | 4050118664416 | |
| Qty. | 5 pc(s). | |

Terminal rails for aluminum cover



Extensive range of accessories for the FieldPower® boxes.
Cable seals, terminal rails, locking elements and much more.

General ordering data

| | | |
|------------|----------------------------|--|
| Type | FP ENC DR07 080 XC A | Version |
| Order No. | 2633730000 | Field Power® terminal rail, Steel, galvanized, 80 mm, for aluminium lid |
| GTIN (EAN) | 4050118664379 | |
| Qty. | 5 pc(s). | |
| Type | FP ENC DR07 170 3C A | Version |
| Order No. | 2633780000 | Field Power® terminal rail, Steel, galvanized, 170 mm, for aluminium lid |
| GTIN (EAN) | 4050118664348 | |
| Qty. | 5 pc(s). | |
| Type | FP ENC DR07 110 3C A | Version |
| Order No. | 2633750000 | Field Power® terminal rail, Steel, galvanized, 110 mm, for aluminium lid |
| GTIN (EAN) | 4050118664362 | |
| Qty. | 5 pc(s). | |

FP PRO TOP3 48/10 3M

Weidmüller Interface GmbH & Co. KG

Klingenbergstraße 26

D-32758 Detmold

Germany

www.weidmueller.com

Accessories

| | | |
|------------|----------------------------|--|
| Type | FP ENC DR07 145 3C A | Version |
| Order No. | 2633760000 | Field Power® terminal rail, Steel, galvanized, 145 mm, for aluminium |
| GTIN (EAN) | 4050118664355 | lid |
| Qty. | 5 pc(s). | |

| | | |
|------------|----------------------------|---|
| Type | FP ENC DR15 68 XC A | Version |
| Order No. | 8000046634 | Field Power® terminal rail, Steel, galvanized, 68 mm, for aluminium lid |
| GTIN (EAN) | 4050118686586 | |
| Qty. | 5 pc(s). | |

Bits E6,3 - Torx®



The Weidmüller bits are standard bits which are highly popular with users thanks to their good quality, large range and efficiency. The computer-controlled hardening method enables Weidmüller to guarantee a consistently high standard of quality.

The high-quality raw materials used make it possible to reach torques far higher than any of those specified in the relevant DIN standards:

- DIN 5261 for PH/PZ bits,
- DIN 5263 for slotted bits,
- Camcar standard for TORX bits

That means a long life at high torques and hence ideal conditions for standard situations.

The benefits:

- Suitable for all types of screws. Because of their excellent hardness values of 59-61 HRC, they are suitable for use with both manual and power tools.
- Good wearing resistance and thus a long life expectancy.
- Optimum fit in all DIN screws means low wear and optimum torque transmission.
- Manufactured to meet professional quality criteria according to relevant ISO standards with a consistently high standard of quality.

General ordering data

| | | |
|------------|----------------------------|---------------|
| Type | BIT E6,3 T20 X 150 | Version |
| Order No. | 2821510000 | Mounting tool |
| GTIN (EAN) | 4064675359050 | |
| Qty. | 50 pc(s). | |