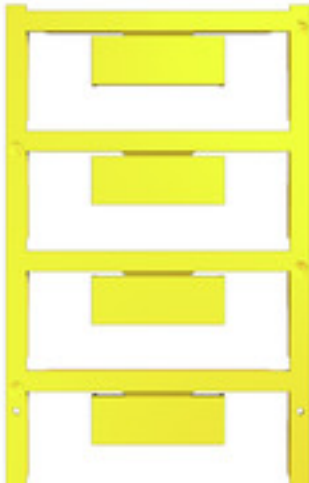


**WAD 12N MC NE GE****Weidmüller Interface GmbH & Co. KG**

Klingenbergstraße 26

D-32758 Detmold

Germany

[www.weidmueller.com](http://www.weidmueller.com)

The WAD connector marker is suitable for W-series terminals and for the WEW 35/2 and ZEW 35/2 end brackets. The markers are available as blank markers, with custom printing or standard print with lightning symbol. The WAD MultiCard markers are suitable for labelling with PrintJet CONNECT printers.

**For custom printing:** Please send us a file of our labeling software M-Print PRO or M-Print PRO Online (without installation) for your labeling specifications.

**General ordering data**

Version	Group markers, Cover, 33.3 x 12 mm, WDU 16N, yellow
Order No.	<a href="#">2866650000</a>
Type	WAD 12N MC NE GE
GTIN (EAN)	4064675604860
Qty.	32 pc(s).

**WAD 12N MC NE GE****Weidmüller Interface GmbH & Co. KG**

Klingenbergstraße 26

D-32758 Detmold

Germany

[www.weidmueller.com](http://www.weidmueller.com)**Technical data****Dimensions and weights**

Height	33.3 mm	Height (inches)	1.311 inch
Width	12 mm	Width (inches)	0.472 inch
Net weight	1.238 g		

**Temperatures**

Operating temperature range	-40...100 °C
-----------------------------	--------------

**General data**

Application/manufacture	WDU 16N	
Colour	yellow	
Halogen	No	
Material	Polyamide 66	
Number of markers per combination	1 MultiCard = Cover	
Number of markers per packaging unit	Form of supply	MultiCard
Operating temperature range	-40...100 °C	
Operating temperature range, max.	100 °C	
Operating temperature range, min.	-40 °C	
Orientation of print	horizontal and vertical	
Printed characters	neutral	
UL 94 flammability rating	V-2	
Width	12 mm	

**Classifications**

ETIM 6.0	EC000761	ETIM 7.0	EC000761
ETIM 8.0	EC000761	ETIM 9.0	EC000761
ECLASS 9.0	27-14-11-37	ECLASS 9.1	27-14-11-37
ECLASS 10.0	27-14-11-37	ECLASS 11.0	27-28-11-01
ECLASS 12.0	27-28-11-01	ECLASS 13.0	27-28-11-01
ECLASS 14.0	27-28-11-01		

Cradle to gate	0.460 kg CO2 eq.
----------------	------------------

**Environmental Product Compliance**

REACH SVHC	/
RoHS Compliance Status	Compliant without exemption
Product Carbon Footprint	de.myview.objectmodel.impl.BlockImpl@1feec0eb

**Approvals**

ROHS	Conform
------	---------

**Downloads**

Catalogues	<a href="#">Catalogues in PDF-format</a>
------------	------------------------------------------

### WAD 12N MC NE GE

**Weidmüller Interface GmbH & Co. KG**

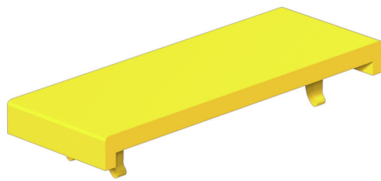
Klingenbergstraße 26

D-32758 Detmold

Germany

[www.weidmueller.com](http://www.weidmueller.com)

## Drawings



### Drawing