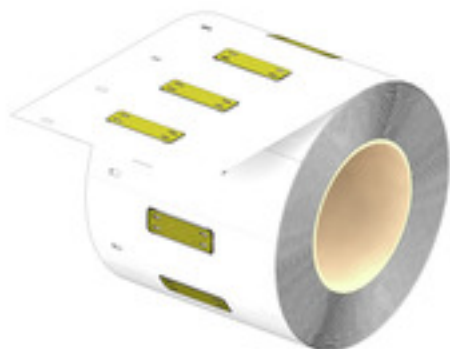


SFX-M 12/40-5 LRP AL GE**Weidmüller Interface GmbH & Co. KG**

Klingenbergstraße 26

D-32758 Detmold

Germany

www.weidmueller.com**General ordering data**

Version	MetalliCard, Conductor and cable markers, 7 - 40 mm, 40 x 12 mm, yellow
Order No.	2863770000
Type	SFX-M 12/40-5 LRP AL GE
GTIN (EAN)	4064675597308
Qty.	500 pc(s).

SFX-M 12/40-5 LRP AL GE

Weidmüller Interface GmbH & Co. KG

Klingenbergstraße 26

D-32758 Detmold

Germany

www.weidmueller.com

Technical data

Dimensions and weights

Depth	0.8 mm	Depth (inches)	0.031 inch
Height	40 mm	Height (inches)	1.575 inch
Width	12 mm	Width (inches)	0.472 inch
Net weight	0.853 g		

Temperatures

Operating temperature range	-55...130 °C
-----------------------------	--------------

General data

Colour	yellow	
Material	Anodized aluminium	
Number of markers per combination	1 MetalliCard = Conductor and cable markers	
Number of markers per packaging unit	Form of supply	MetalliCard
Operating temperature range	-55...130 °C	
Operating temperature range, max.	130 °C	
Operating temperature range, min.	-55 °C	
Recommended industries	Process, Energy	
Size of labelling field	12.2 x 25 mm	
Width	12 mm	

Conductor and cable markers

Cable tie passage	Flat	Conductor O.D.	7 - 40 mm
Conductor O.D., max.	40 mm	Conductor O.D., min.	7 mm
Conductor cross-section, max.	500 mm ²	Conductor cross-section, min.	16 mm ²
Cross-section for connected wire	16 - 500 mm ²		

Classifications

ETIM 6.0	EC001530	ETIM 7.0	EC001530
ETIM 8.0	EC001530	ETIM 9.0	EC001530
ECLASS 9.0	27-40-04-01	ECLASS 9.1	27-40-04-01
ECLASS 10.0	27-40-04-01	ECLASS 11.0	27-28-11-02
ECLASS 12.0	27-28-11-02	ECLASS 13.0	27-28-11-02

Environmental Product Compliance

REACH SVHC	/
RoHS Compliance Status	Compliant without exemption

Approvals

ROHS	Conform
------	---------

Downloads

Engineering Data	CAD data – STEP
Catalogues	Catalogues in PDF-format

SFX-M 12/40-5 LRP AL GE

Weidmüller Interface GmbH & Co. KG

Klingenbergstraße 26

D-32758 Detmold

Germany

www.weidmueller.com

Drawings

