

## FC20 TN/50A S1 B BX

Weidmüller Interface GmbH &amp; Co. KG

Klingenbergstraße 26

D-32758 Detmold

Germany

www.weidmueller.com

## Product image

**OMNIMATE® - Board-to-Board connectors**

Flexible engineering of compact devices

The use of future-proof contact systems, as well as the optimisation of manufacturing processes, are increasingly important in the development of efficient industrial devices, especially in the field of Industry 4.0. OMNIMATE® board-to-board connectors feature a 1.27 mm pitch and offer maximum flexibility due to different designs.

- **Flexible device design** - Industrial suitable density combined with high flexible connection combinations (Mezzanine, Mother-to-Daughter, Extender-card, Cable-to-Board)
- **Automation-Ready** - Developed for automatic assembly with high precise pin coplanarity and SMT-fixation
- **Reliable contact** - Up to 500 mating cycles due to industry suitable gold-surface (PdNi-Au)
- **Process-Ready** - High performance LCP material for reflow soldering
- **Scalability** - Different heights with high contact overlapping ensure various solutions from 12 – 80 poles.
- **Robust miniaturisation** - simple and safe connection even possible under unfavorable mating conditions – e.g. inclination or offset.

**General ordering data**

Version	PCB plug-in connector, female plug, Pitch in mm (P): 1.27 mm, Number of poles: 50, Box
Order No.	<a href="#">2827280000</a>
Type	FC20 TN/50A S1 B BX
GTIN (EAN)	4064675363880
Qty.	10 pc(s).
Product data	IEC: / 1.9 A UL:
Packaging	Box

## FC20 TN/50A S1 B BX

Weidmüller Interface GmbH &amp; Co. KG

Klingenbergstraße 26

D-32758 Detmold

Germany

www.weidmueller.com

## Technical data

## Dimensions and weights

Net weight	14.2 g
------------	--------

## Material data

Insulating material	LCP	Colour	grey
Colour chart (similar)	RAL 7035	Insulation strength	$\geq 20 \text{ M}\Omega$
Moisture Level (MSL)	1	UL 94 flammability rating	V-0
Contact base material	Copper alloy	Contact material	Cu-alloy
Contact surface	Ni/Au	Layer structure of plug contact	$\geq 2 \mu\text{m Ni} / \geq 0.4 \mu\text{m PdNi} / \geq 0.05 \mu\text{m Au}$
Storage temperature, min.	-40 °C	Storage temperature, max.	70 °C
Operating temperature, min.	-40 °C	Operating temperature, max.	125 °C

## Conductors suitable for connection

Wire connection cross section AWG, min.	AWG 30/7	Wire connection cross section AWG, max.	AWG 30/7
---	----------	---	----------

## Rated data acc. to IEC

Rated current, min. number of poles (Tu=20°C)	1.9 A	Clearance, min.	0.4 mm
Creepage distance, min.	0.4 mm		

## Packing

Packaging	Box	VPE length	155 mm
VPE width	64 mm	VPE height	38 mm

## Classifications

ETIM 6.0	EC002599	ETIM 7.0	EC002599
ETIM 8.0	EC002599	ETIM 9.0	EC002599
ECLASS 9.0	27-06-03-08	ECLASS 9.1	27-06-03-08
ECLASS 10.0	27-06-03-08	ECLASS 11.0	27-06-03-08
ECLASS 12.0	27-06-03-08	ECLASS 13.0	27-06-03-08

## Important note

IPC conformity	Conformity: The products are developed, manufactured and delivered according international recognized standards and norms and comply with the assured properties in the data sheet resp. fulfill decorative properties in accordance with IPC-A-610 "Class 2". Further claims on the products can be evaluated on request.
----------------	--

## Approvals

ROHS	Conform
------	---------

## Downloads

Engineering Data	<a href="#">CAD data – STEP</a>
Catalogues	<a href="#">Catalogues in PDF-format</a>

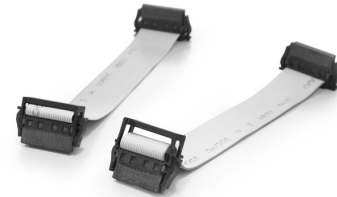
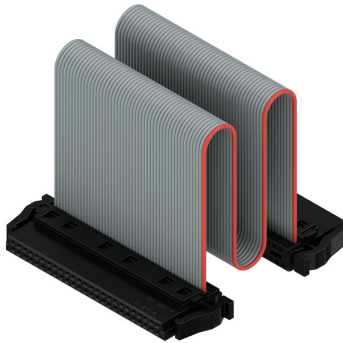
## FC20 TN/50A S1 B BX

**Weidmüller Interface GmbH & Co. KG**  
Klingenbergstraße 26  
D-32758 Detmold  
Germany

[www.weidmueller.com](http://www.weidmueller.com)

# Drawings

## Product image



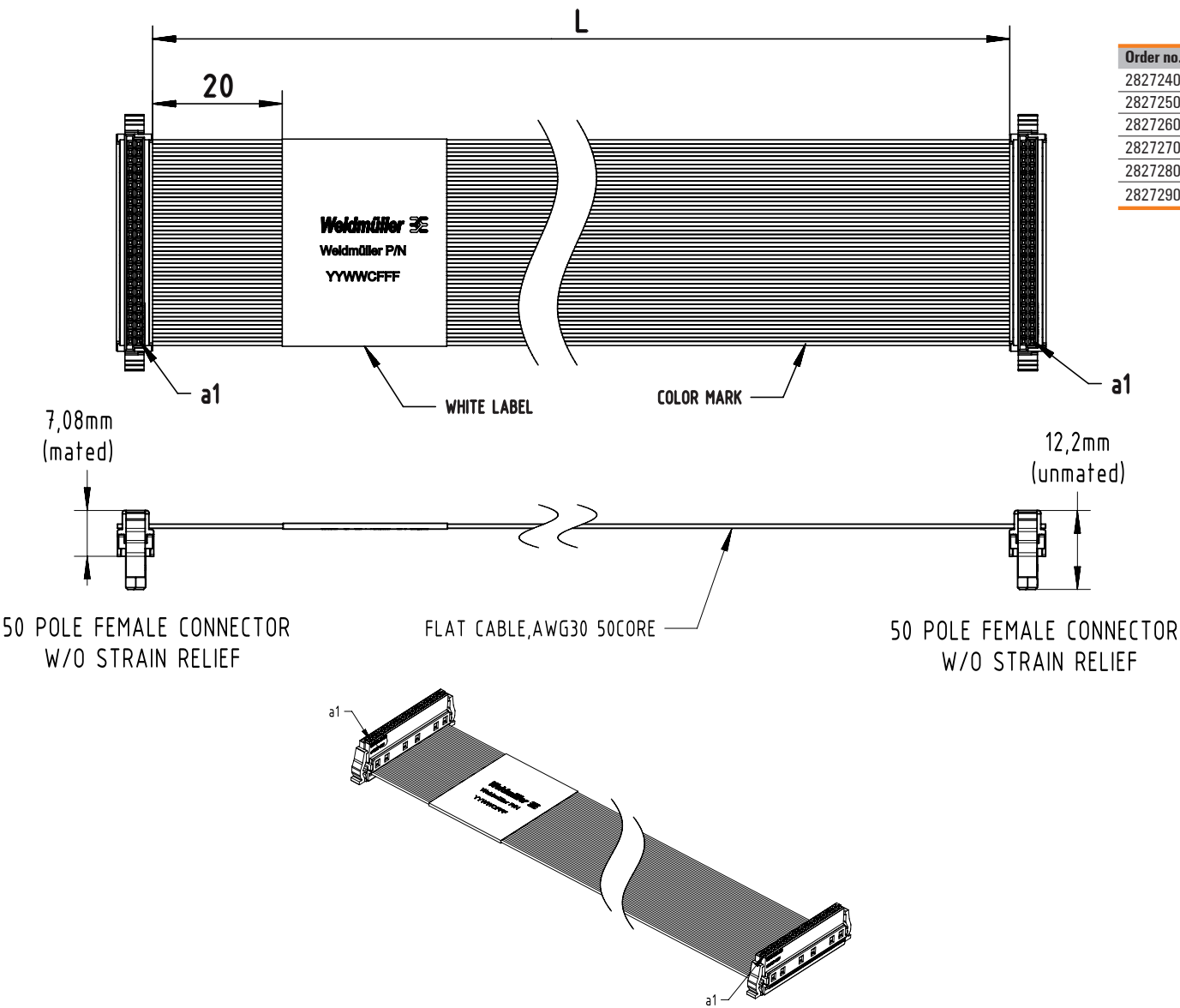
With optional strain relief



Three standard lengths (0.1 m, 0.2 m, and 0.5 m)

FC...../50A S1 B BX

1:1 wiring, 50 pole, different lengths and cable types



Order no.	Type	No. of poles	Cable Type	Cable Length
2827240000	FC10 PN/50A S1 B BX	50	PVC	100±5mm
2827250000	FC20 PN/50A S1 B BX	50	PVC	200±10mm
2827260000	FC50 PN/50A S1 B BX	50	PVC	500±10mm
2827270000	FC10 TN/50A S1 B BX	50	TPE	100±5mm
2827280000	FC20 TN/50A S1 B BX	50	TPE	200±10mm
2827290000	FC50 TN/50A S1 B BX	50	TPE	500±10mm