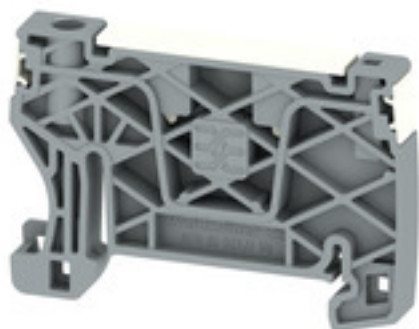


**AEB 35 SCL/1 V0 TGY DL****Weidmüller Interface GmbH & Co. KG**

Klingenbergstraße 26

D-32758 Detmold

Germany

[www.weidmueller.com](http://www.weidmueller.com)**General ordering data**

Version	A-series, End bracket
Order No.	<a href="#">2817770000</a>
Type	AEB 35 SCL/1 V0 TGY DL
GTIN (EAN)	4064675326335
Qty.	20 pc(s).

**AEB 35 SCL/1 V0 TGY DL****Weidmüller Interface GmbH & Co. KG**

Klingenbergstraße 26

D-32758 Detmold

Germany

[www.weidmueller.com](http://www.weidmueller.com)**Technical data****Dimensions and weights**

Depth	36.5 mm	Depth (inches)	1.437 inch
Height	52.6 mm	Height (inches)	2.071 inch
Width	6 mm	Width (inches)	0.236 inch
Net weight	6.055 g		

**Temperatures**

Continuous operating temp., min.	-60 °C	Continuous operating temp., max.	130 °C
----------------------------------	--------	----------------------------------	--------

**Material data**

Material	Wemid	Colour	Traffic grey (RAL)
UL 94 flammability rating	V-0		

**System specifications**

Rail	TS 35
------	-------

**Additional technical data**

Interlock	screwless	Type of mounting	Snap-on
-----------	-----------	------------------	---------

**General**

Rail	TS 35
------	-------

**Classifications**

ETIM 6.0	EC001041	ETIM 7.0	EC001041
ETIM 8.0	EC001041	ETIM 9.0	EC001041
ECLASS 9.0	27-14-11-35	ECLASS 9.1	27-14-11-35
ECLASS 10.0	27-14-11-35	ECLASS 11.0	27-14-11-35
ECLASS 12.0	27-14-11-35	ECLASS 13.0	27-25-03-02

**Environmental Product Compliance**

REACH SVHC	/
------------	---

**Downloads**

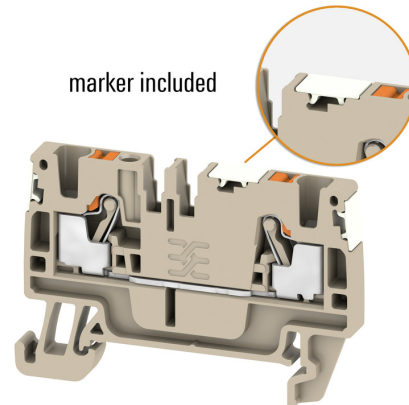
Approval/Certificate/Document of Conformity	<a href="#">Confirmation of Standards EN 45545-2_2020-10</a>
Engineering Data	<a href="#">CAD data – STEP</a>
Catalogues	<a href="#">Catalogues in PDF-format</a>

**AEB 35 SCL/1 V0 TGY DL**

**Weidmüller Interface GmbH & Co. KG**  
Klingenbergstraße 26  
D-32758 Detmold  
Germany

[www.weidmueller.com](http://www.weidmueller.com)

**Drawings**



**AEB 35 SCL/1 V0 TGY DL****Weidmüller Interface GmbH & Co. KG**

Klingenbergstraße 26

D-32758 Detmold

Germany

[www.weidmueller.com](http://www.weidmueller.com)**Accessories****Slotted screwdriver**

VDE insulated screwdriver sets, for working on live parts up to 1000 V AC and 1500 V DC, DIN EN 60900. IEC 900. Each piece is "GS" safety tested. Blade made from fully hardened, high-alloy chromium-vanadium-molybdenum steel, gun-metal finish.

**General ordering data**

Type	SDIS SLIM 0.6X3.5X100	Version
Order No.	<a href="#">2749610000</a>	Mounting tool, Blade width (B): 3.5 mm, Blade length: 100 mm, Blade
GTIN (EAN)	4050118896350	thickness (A): 0.6 mm
Qty.	1 pc(s).	