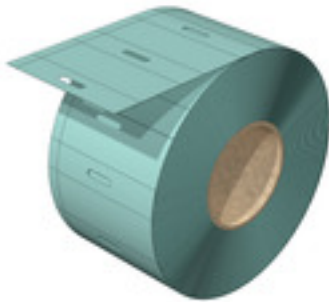


**THM ET 200SP-HA 18.8/50 TU****Weidmüller Interface GmbH & Co. KG**

Klingenbergstraße 26

D-32758 Detmold

Germany

[www.weidmueller.com](http://www.weidmueller.com)

THM ET S7 non-adhesive, roll-packaged labels are used to label the SIMATIC ET 200S and S7-modules from Siemens.

The M-Print® PRO software can be used to individually print the THM ET S7 labels with a THM printer. Labels can be easily separated. The THM MultiMark printer ensures highly-resistant printing.

**General ordering data**

Version	THM, Device markers, 18.8 x 50 mm, Siemens, Turquoise
Order No.	<a href="#">2799210000</a>
Type	THM ET 200SP-HA 18.8/50 TU
GTIN (EAN)	4064675260967
Qty.	1,500 pc(s).

**THM ET 200SP-HA 18.8/50 TU****Weidmüller Interface GmbH & Co. KG**

Klingenbergstraße 26

D-32758 Detmold

Germany

[www.weidmueller.com](http://www.weidmueller.com)**Technical data****Dimensions and weights**

Depth	0.08 mm	Depth (inches)	0.003 inch
Height	18.8 mm	Height (inches)	0.74 inch
Width	50 mm	Width (inches)	1.969 inch
Net weight	0.077 g		

**Temperatures**

Operating temperature range	-50...100 °C
-----------------------------	--------------

**General data**

Application/manufacture	Siemens	
Approval acc. to UL 969	No	
Colour	Turquoise	
Halogen	No	
Material	Polypropylene	
Number of markers per combination	1 Label reel = Device markers	
Number of markers per packaging unit	Form of supply	Label reel
Operating temperature range	-50...100 °C	
Operating temperature range, max.	100 °C	
Operating temperature range, min.	-50 °C	
Printed characters	without	
UL 94 flammability rating	HB	
Width	50 mm	

**Device markers**

Halogen	No
---------	----

**Classifications**

ETIM 6.0	EC001288	ETIM 7.0	EC001288
ETIM 8.0	EC001288	ETIM 9.0	EC001288
ECLASS 9.0	27-40-06-29	ECLASS 9.1	27-40-06-29
ECLASS 10.0	27-40-06-29	ECLASS 11.0	27-28-11-04
ECLASS 12.0	27-28-11-04	ECLASS 13.0	27-28-11-04

**Approvals**

ROHS	Conform
------	---------

**Downloads**

Catalogues	<a href="#">Catalogues in PDF-format</a>
------------	--

**THM ET 200SP-HA 18.8/50 TU**

**Weidmüller Interface GmbH & Co. KG**  
Klingenbergstraße 26  
D-32758 Detmold  
Germany

[www.weidmueller.com](http://www.weidmueller.com)

**Drawings**

