

**HDC MHE 5L MP****Weidmüller Interface GmbH & Co. KG**

Klingenbergstraße 26

D-32758 Detmold

Germany

[www.weidmueller.com](http://www.weidmueller.com)**Flexible**

The four module sizes make for individual plug solutions that save a huge amount of space. The smaller pitch translates into an optimised design too.

**General ordering data**

Version	Signal module
Order No.	<a href="#">2748400000</a>
Type	HDC MHE 5L MP
GTIN (EAN)	4050118890877
Qty.	1 pc(s).

## HDC MHE 5L MP

Weidmüller Interface GmbH &amp; Co. KG

Klingenbergstraße 26

D-32758 Detmold

Germany

www.weidmueller.com

## Technical data

## Dimensions and weights

Depth	34 mm	Depth (inches)	1.339 inch
Height	36 mm	Height (inches)	1.417 inch
Width	34 mm	Width (inches)	1.339 inch
Net weight	18 g		

## Temperatures

Limit temperature	-40 °C ... 125 °C
-------------------	-------------------

## General data

Material	Polycarbonate	Number of poles	5
Plugging cycles	≥ 500	Pollution severity	3
Rated current (DIN EN 61984)	16 A	Rated impulse voltage (DIN EN 61984)	4 kV
Rated voltage (DIN EN 61984)	230 V	Rated voltage according to UL/CSA	600 V
Required plug-in slots	1	Series	ModuPlug
Surge voltage category	III	Type	Male
UL 94 flammability rating	V-0		

## PE connection data

Connection type PE	Screw connection via module frame
--------------------	-----------------------------------

## Version

Conductor cross-section, max.	1.5 mm <sup>2</sup>	Conductor cross-section, min.	0.25 mm <sup>2</sup>
Stripping length, rated connection	8 mm	Type of connection	PUSH IN with actuator
Wire connection cross section AWG, max.	AWG 16	Wire connection cross section AWG, min.	AWG 24

## Classifications

ETIM 6.0	EC002312	ETIM 7.0	EC002312
ETIM 8.0	EC002312	ETIM 9.0	EC002312
ECLASS 9.0	27-44-02-92	ECLASS 9.1	27-44-02-18
ECLASS 10.0	27-44-02-92	ECLASS 11.0	27-44-02-92
ECLASS 12.0	27-44-02-92	ECLASS 13.0	27-44-02-92

## Approvals

Approvals



ROHS	Conform
UL File Number Search	UL Website
Certificate No. (UR)	E92202

## Downloads

Approval/Certificate/Document of Conformity	<a href="#">Manufacturer's declaration</a>
Engineering Data	<a href="#">CAD data – STEP</a>
Catalogues	<a href="#">Catalogues in PDF-format</a>

Creation date June 4, 2024 3:31:49 PM CEST

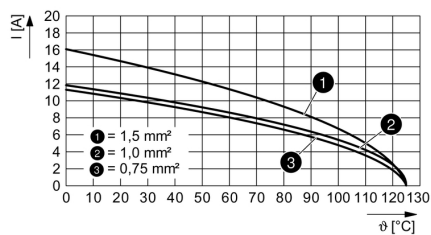
Catalogue status 01.06.2024 / We reserve the right to make technical changes.

## HDC MHE 5L MP

**Weidmüller Interface GmbH & Co. KG**  
Klingenbergstraße 26  
D-32758 Detmold  
Germany

[www.weidmueller.com](http://www.weidmueller.com)

## Drawings



**HDC MHE 5L MP****Weidmüller Interface GmbH & Co. KG**

Klingenbergstraße 26

D-32758 Detmold

Germany

[www.weidmueller.com](http://www.weidmueller.com)**Accessories****Standard****General ordering data**

Type	HDC MF 16B AD	Version
Order No.	<a href="#">1429010000</a>	Frame
GTIN (EAN)	4050118233315	
Qty.	1 pc(s).	
Type	HDC MF 16B DA	Version
Order No.	<a href="#">1429030000</a>	Frame
GTIN (EAN)	4050118233407	
Qty.	1 pc(s).	

**Standard****General ordering data**

Type	HDC MF 24B FA	Version
Order No.	<a href="#">1429070000</a>	Frame
GTIN (EAN)	4050118233520	
Qty.	1 pc(s).	
Type	HDC MF 24B AF	Version
Order No.	<a href="#">1429050000</a>	Frame
GTIN (EAN)	4050118233285	
Qty.	1 pc(s).	

## HDC MHE 5L MP

Weidmüller Interface GmbH &amp; Co. KG

Klingenbergstraße 26

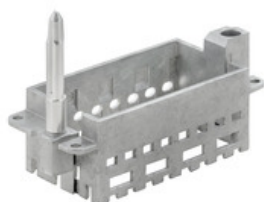
D-32758 Detmold

Germany

[www.weidmueller.com](http://www.weidmueller.com)

## Accessories

## With long guiding pin



## General ordering data

Type	HDC MFGL 16B DA	Version
Order No.	<a href="#">2737020000</a>	Frame
GTIN (EAN)	4050118823073	
Qty.	1 pc(s).	
Type	HDC MFGL 16B AD	Version
Order No.	<a href="#">2737010000</a>	Frame
GTIN (EAN)	4050118823066	
Qty.	1 pc(s).	

## With long guiding pin



## General ordering data

Type	HDC MFGL 6B AB	Version
Order No.	<a href="#">2736970000</a>	Frame
GTIN (EAN)	4050118823035	
Qty.	1 pc(s).	
Type	HDC MFGL 6B BA	Version
Order No.	<a href="#">2736980000</a>	Frame
GTIN (EAN)	4050118822908	
Qty.	1 pc(s).	

## HDC MHE 5L MP

Weidmüller Interface GmbH &amp; Co. KG

Klingenbergstraße 26

D-32758 Detmold

Germany

www.weidmueller.com

## Accessories

## With long guiding pin



## General ordering data

Type	HDC MFGL 24B FA	Version
Order No.	<a href="#">2737040000</a>	Frame
GTIN (EAN)	4050118823097	
Qty.	1 pc(s).	
Type	HDC MFGL 24B AF	Version
Order No.	<a href="#">2737030000</a>	Frame
GTIN (EAN)	4050118823080	
Qty.	1 pc(s).	

## With short guiding pin



## General ordering data

Type	HDC MFGS 16B DA	Version
Order No.	<a href="#">2736940000</a>	Frame
GTIN (EAN)	4050118823004	
Qty.	1 pc(s).	
Type	HDC MFGS 16B AD	Version
Order No.	<a href="#">2736930000</a>	Frame
GTIN (EAN)	4050118822298	
Qty.	1 pc(s).	

**HDC MHE 5L MP****Weidmüller Interface GmbH & Co. KG**

Klingenbergstraße 26

D-32758 Detmold

Germany

[www.weidmueller.com](http://www.weidmueller.com)**Accessories****With short guiding pin****General ordering data**

Type	HDC MFGS 10B AC	Version
Order No.	<a href="#">2736910000</a>	Frame
GTIN (EAN)	4050118822274	
Qty.	1 pc(s).	
Type	HDC MFGS 10B CA	Version
Order No.	<a href="#">2736920000</a>	Frame
GTIN (EAN)	4050118822281	
Qty.	1 pc(s).	

**Standard****General ordering data**

Type	HDC MF 6B BA	Version
Order No.	<a href="#">1428940000</a>	Frame
GTIN (EAN)	4050118233353	
Qty.	1 pc(s).	
Type	HDC MF 6B AB	Version
Order No.	<a href="#">1428920000</a>	Frame
GTIN (EAN)	4050118233414	
Qty.	1 pc(s).	

**HDC MHE 5L MP**

**Weidmüller Interface GmbH & Co. KG**  
Klingenbergstraße 26  
D-32758 Detmold  
Germany

[www.weidmueller.com](http://www.weidmueller.com)

**Accessories****With long guiding pin****General ordering data**

Type	HDC MFGL 10B AC	Version
Order No.	<a href="#">2736990000</a>	Frame
GTIN (EAN)	4050118823042	
Qty.	1 pc(s).	
Type	HDC MFGL 10B CA	Version
Order No.	<a href="#">2737000000</a>	Frame
GTIN (EAN)	4050118823059	
Qty.	1 pc(s).	

**With short guiding pin****General ordering data**

Type	HDC MFGS 24B AF	Version
Order No.	<a href="#">2736950000</a>	Frame
GTIN (EAN)	4050118823011	
Qty.	1 pc(s).	
Type	HDC MFGS 24B FA	Version
Order No.	<a href="#">2736960000</a>	Frame
GTIN (EAN)	4050118823028	
Qty.	1 pc(s).	



**HDC MHE 5L MP****Weidmüller Interface GmbH & Co. KG**

Klingenbergstraße 26

D-32758 Detmold

Germany

[www.weidmueller.com](http://www.weidmueller.com)**Accessories****Standard****General ordering data**

Type	HDC MF 10B CA	Version
Order No.	<a href="#">1428980000</a>	Frame
GTIN (EAN)	4050118233278	
Qty.	1 pc(s).	
Type	HDC MF 10B AC	Version
Order No.	<a href="#">1428960000</a>	Frame
GTIN (EAN)	4050118233223	
Qty.	1 pc(s).	

**With short guiding pin****General ordering data**

Type	HDC MFGS 6B AB	Version
Order No.	<a href="#">2736890000</a>	Frame
GTIN (EAN)	4050118822250	
Qty.	1 pc(s).	
Type	HDC MFGS 6B BA	Version
Order No.	<a href="#">2736900000</a>	Frame
GTIN (EAN)	4050118822267	
Qty.	1 pc(s).	