

HDC MHP 100 FAS**Weidmüller Interface GmbH & Co. KG**

Klingenbergstraße 26

D-32758 Detmold

Germany

www.weidmueller.com**Flexible**

The four module sizes make for individual plug solutions that save a huge amount of space. The smaller pitch translates into an optimised design too.

General ordering data

Version	Power module
Order No.	2748290000
Type	HDC MHP 100 FAS
GTIN (EAN)	4050118891126
Qty.	2 pc(s).

HDC MHP 100 FAS

Weidmüller Interface GmbH & Co. KG

Klingenbergstraße 26

D-32758 Detmold

Germany

www.weidmueller.com

Technical data

Dimensions and weights

Depth	34 mm	Depth (inches)	1.339 inch
Height	49 mm	Height (inches)	1.929 inch
Width	34.2 mm	Width (inches)	1.346 inch
Net weight	24.95 g		

Temperatures

Limit temperature	-40 °C ... 125 °C
-------------------	-------------------

General data

Insulating material	Polycarbonate	Material	Polycarbonate
Number of poles	2	Plugging cycles	≥ 500
Pollution severity	3	Rated current (DIN EN 61984)	100 A
Rated impulse voltage (DIN EN 61984)	8 kV	Rated voltage (DIN EN 61984)	1,000 V
Rated voltage according to UL/CSA	600 V	Required plug-in slots	2
Series	ModuPlug	Surge voltage category	III
Type	Female	UL 94 flammability rating	V-0

Version

Conductor cross-section, max.	35 mm ²	Conductor cross-section, min.	10 mm ²
Stripping length, rated connection	13 mm	Type of connection	Axial screw connection
Wire connection cross section AWG, max.	AWG 2	Wire connection cross section AWG, min.	AWG 8

Power contact

Clamping range, power contact, max.	35 mm ²	Clamping range, power contact, min.	10 mm ²
-------------------------------------	--------------------	-------------------------------------	--------------------

Classifications

ETIM 6.0	EC002312	ETIM 7.0	EC002312
ETIM 8.0	EC002312	ETIM 9.0	EC002312
ECLASS 9.0	27-44-02-92	ECLASS 9.1	27-44-02-18
ECLASS 10.0	27-44-02-92	ECLASS 11.0	27-44-02-92
ECLASS 12.0	27-44-02-92	ECLASS 13.0	27-44-02-92

Environmental Product Compliance

REACH SVHC	Lead 7439-92-1
SCIP	fa505316-3e43-4ad0-930c-360dfdbe182a

Approvals

Approvals



ROHS	Conform
UL File Number Search	UL Website
Certificate No. (UR)	E92202

HDC MHP 100 FAS

Weidmüller Interface GmbH & Co. KG

Klingenbergstraße 26

D-32758 Detmold

Germany

www.weidmueller.com

Technical data

Downloads

Approval/Certificate/Document of Con-
formity

[Manufacturer's declaration](#)

Engineering Data

[CAD data – STEP](#)

Catalogues

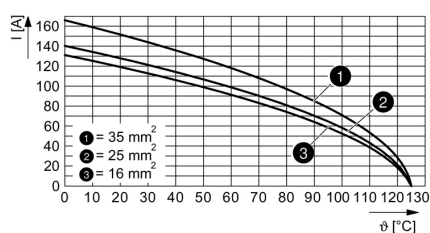
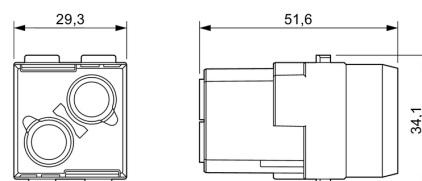
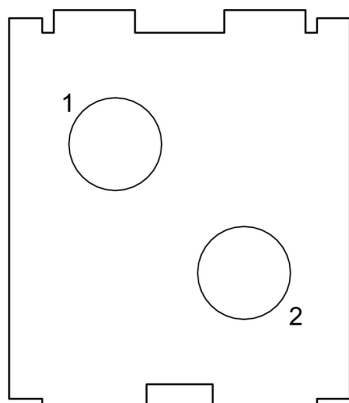
[Catalogues in PDF-format](#)

HDC MHP 100 FAS

Weidmüller Interface GmbH & Co. KG
Klingenbergstraße 26
D-32758 Detmold
Germany

www.weidmueller.com

Drawings



HDC MHP 100 FAS**Weidmüller Interface GmbH & Co. KG**

Klingenbergstraße 26

D-32758 Detmold

Germany

www.weidmueller.com**Accessories****With short guiding pin****General ordering data**

Type	HDC MFGS 24B FA	Version
Order No.	2736960000	Frame
GTIN (EAN)	4050118823028	
Qty.	1 pc(s).	
Type	HDC MFGS 24B AF	Version
Order No.	2736950000	Frame
GTIN (EAN)	4050118823011	
Qty.	1 pc(s).	

Standard**General ordering data**

Type	HDC MF 24B AF	Version
Order No.	1429050000	Frame
GTIN (EAN)	4050118233285	
Qty.	1 pc(s).	
Type	HDC MF 24B FA	Version
Order No.	1429070000	Frame
GTIN (EAN)	4050118233520	
Qty.	1 pc(s).	

HDC MHP 100 FAS**Weidmüller Interface GmbH & Co. KG**

Klingenbergstraße 26

D-32758 Detmold

Germany

www.weidmueller.com**Accessories****With long guiding pin****General ordering data**

Type	HDC MFGL 10B AC	Version
Order No.	2736990000	Frame
GTIN (EAN)	4050118823042	
Qty.	1 pc(s).	
Type	HDC MFGL 10B CA	Version
Order No.	2737000000	Frame
GTIN (EAN)	4050118823059	
Qty.	1 pc(s).	

Standard**General ordering data**

Type	HDC MF 6B AB	Version
Order No.	1428920000	Frame
GTIN (EAN)	4050118233414	
Qty.	1 pc(s).	
Type	HDC MF 6B BA	Version
Order No.	1428940000	Frame
GTIN (EAN)	4050118233353	
Qty.	1 pc(s).	

HDC MHP 100 FAS**Weidmüller Interface GmbH & Co. KG**

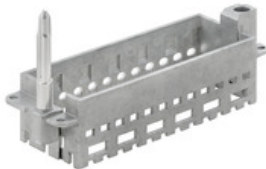
Klingenbergstraße 26

D-32758 Detmold

Germany

www.weidmueller.com**Accessories****With long guiding pin****General ordering data**

Type	HDC MFL 6B AB	Version
Order No.	2736970000	Frame
GTIN (EAN)	4050118823035	
Qty.	1 pc(s).	
Type	HDC MFL 6B BA	Version
Order No.	2736980000	Frame
GTIN (EAN)	4050118822908	
Qty.	1 pc(s).	

With long guiding pin**General ordering data**

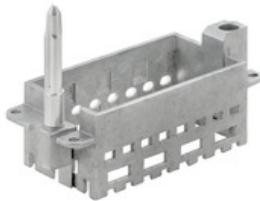
Type	HDC MFL 24B FA	Version
Order No.	2737040000	Frame
GTIN (EAN)	4050118823097	
Qty.	1 pc(s).	
Type	HDC MFL 24B AF	Version
Order No.	2737030000	Frame
GTIN (EAN)	4050118823080	
Qty.	1 pc(s).	

HDC MHP 100 FAS**Weidmüller Interface GmbH & Co. KG**

Klingenbergstraße 26

D-32758 Detmold

Germany

www.weidmueller.com**Accessories****With long guiding pin****General ordering data**

Type	HDC MFGL 16B DA	Version
Order No.	2737020000	Frame
GTIN (EAN)	4050118823073	
Qty.	1 pc(s).	
Type	HDC MFGL 16B AD	Version
Order No.	2737010000	Frame
GTIN (EAN)	4050118823066	
Qty.	1 pc(s).	

Standard**General ordering data**

Type	HDC MF 10B AC	Version
Order No.	1428960000	Frame
GTIN (EAN)	4050118233223	
Qty.	1 pc(s).	
Type	HDC MF 10B CA	Version
Order No.	1428980000	Frame
GTIN (EAN)	4050118233278	
Qty.	1 pc(s).	

HDC MHP 100 FAS**Weidmüller Interface GmbH & Co. KG**

Klingenbergstraße 26

D-32758 Detmold

Germany

www.weidmueller.com**Accessories****With short guiding pin****General ordering data**

Type	HDC MFGS 6B BA	Version
Order No.	2736900000	Frame
GTIN (EAN)	4050118822267	
Qty.	1 pc(s).	
Type	HDC MFGS 6B AB	Version
Order No.	2736890000	Frame
GTIN (EAN)	4050118822250	
Qty.	1 pc(s).	

Standard**General ordering data**

Type	HDC MF 16B DA	Version
Order No.	1429030000	Frame
GTIN (EAN)	4050118233407	
Qty.	1 pc(s).	
Type	HDC MF 16B AD	Version
Order No.	1429010000	Frame
GTIN (EAN)	4050118233315	
Qty.	1 pc(s).	

HDC MHP 100 FAS

Weidmüller Interface GmbH & Co. KG
Klingenbergstraße 26
D-32758 Detmold
Germany

www.weidmueller.com

Accessories**With short guiding pin****General ordering data**

Type	HDC MFGS 16B AD	Version
Order No.	2736930000	Frame
GTIN (EAN)	4050118822298	
Qty.	1 pc(s).	
Type	HDC MFGS 16B DA	Version
Order No.	2736940000	Frame
GTIN (EAN)	4050118823004	
Qty.	1 pc(s).	

With short guiding pin**General ordering data**

Type	HDC MFGS 10B AC	Version
Order No.	2736910000	Frame
GTIN (EAN)	4050118822274	
Qty.	1 pc(s).	
Type	HDC MFGS 10B CA	Version
Order No.	2736920000	Frame
GTIN (EAN)	4050118822281	
Qty.	1 pc(s).	