

**WTTB 6 LTGY****Weidmüller Interface GmbH & Co. KG**

Klingenbergstraße 26

D-32758 Detmold

Germany

[www.weidmueller.com](http://www.weidmueller.com)**General ordering data**

Version	Test-disconnect terminal, Screw connection, 6 mm <sup>2</sup> , 500 V, 30 A, Integral test socket: No, TS 35, TS 32, Light Grey
Order No.	<a href="#">2740050000</a>
Type	WTTB 6 LTGY
GTIN (EAN)	4064675021308
Qty.	50 pc(s).



## WTTB 6 LTGY

Weidmüller Interface GmbH &amp; Co. KG

Klingenbergstraße 26

D-32758 Detmold

Germany

www.weidmueller.com

## Technical data

## Dimensions and weights

Depth	69 mm	Depth (inches)	2.717 inch
Height	100 mm	Height (inches)	3.937 inch
Width	8.1 mm	Width (inches)	0.319 inch
Net weight	32.173 g		

## Temperatures

Storage temperature	-25 °C...55 °C	Continuous operating temp., min.	-60 °C
Continuous operating temp., max.	130 °C		

## Material data

Material	Wemid	Colour	Light Grey
Colour of operational elements	orange	UL 94 flammability rating	V-0

## System specifications

End cover plate required	Yes	Number of potentials	1
Number of levels	1	Number of clamping points per level	2
Number of potentials per tier	1	Rail	TS 35, TS 32
N-function	No	PE function	No
PEN function	No		

## Additional technical data

Explosion-tested version	No	Open sides	right
Type of mounting	TS 35, TS 32		

## CSA rating data

Certificate No. (CSA)	200039-80086745	Current size B (CSA)	30 A
Current size C (CSA)	30 A	Current size D (CSA)	5 A
Voltage size B (CSA)	300 V	Voltage size C (CSA)	300 V
Voltage size D (CSA)	600 V	Wire cross section max. (CSA)	8 AWG
Wire cross section min. (CSA)	22 AWG		



## WTTB 6 LTGY

Weidmüller Interface GmbH &amp; Co. KG

Klingenbergstraße 26

D-32758 Detmold

Germany

www.weidmueller.com

## Technical data

## Conductors for clamping (rated connection)

Blade size	0.8 x 4.0 mm	Clamping range, max.	10 mm <sup>2</sup>
Clamping range, min.	0.5 mm <sup>2</sup>	Clamping screw	M 3.5
Connection cross-section, stranded, max.	10 mm <sup>2</sup>	Connection cross-section, stranded, min.	0.5 mm <sup>2</sup>
Connection direction	on side	Gauge to IEC 60947-1	A4
Number of connections	2	Stripping length	12 mm
Tightening torque, max.	1.6 Nm	Tightening torque, min.	0.8 Nm
Type of connection	Screw connection	Wire connection cross section AWG, max.	AWG 8
Wire connection cross section AWG, min.	AWG 22	Wire connection cross section, finely stranded, max.	10 mm <sup>2</sup>
Wire connection cross section, finely stranded, min.	0.5 mm <sup>2</sup>	Wire connection cross-section, finely stranded with wire-end ferrules DIN 46228/1, max.	6 mm <sup>2</sup>
Wire connection cross-section, finely stranded with wire-end ferrules DIN 46228/1, min.	0.5 mm <sup>2</sup>	Wire connection cross-section, finely stranded with wire-end ferrules DIN 46228/4, max.	6 mm <sup>2</sup>
Wire connection cross-section, finely stranded with wire-end ferrules DIN 46228/4, min.	0.5 mm <sup>2</sup>	Wire connection cross-section, solid core, max.	10 mm <sup>2</sup>
Wire connection cross-section, solid core, min.	0.5 mm <sup>2</sup>		

## General

Rail	TS 35, TS 32	Standards	IEC 60947-7-1
Wire connection cross section AWG, max.	AWG 8	Wire connection cross section AWG, min.	AWG 22

## Rating data

Rated cross-section	6 mm <sup>2</sup>	Rated voltage	500 V
Rated DC voltage	500 V	Rated current	30 A
Current at maximum wires	30 A	Standards	IEC 60947-7-1
Volume resistance according to IEC 60947-7-x	0.78 mΩ	Rated impulse withstand voltage	6 kV
Power loss in accordance with IEC 60947-7-x	1.31 W	Pollution severity	3
Surge voltage category	III		

## UL rating data

Certificate No. (cURus)	E60693	Conductor size Factory wiring max. (cURus)	8 AWG
Conductor size Factory wiring min. (cURus)	22 AWG	Conductor size Field wiring max. (cURus)	8 AWG
Conductor size Field wiring min. (cURus)	22 AWG	Current size B (cURus)	30 A
Current size C (cURus)	30 A	Current size D (cURus)	5 A
Voltage size B (cURus)	300 V	Voltage size C (cURus)	300 V
Voltage size D (cURus)	600 V		



## WTTB 6 LTGY

Weidmüller Interface GmbH &amp; Co. KG

Klingenbergstraße 26

D-32758 Detmold

Germany

www.weidmueller.com

## Technical data

## Classifications

ETIM 6.0	EC000902	ETIM 7.0	EC000902
ETIM 8.0	EC000902	ETIM 9.0	EC000902
ECLASS 9.0	27-14-11-26	ECLASS 9.1	27-14-11-26
ECLASS 10.0	27-14-11-26	ECLASS 11.0	27-14-11-26
ECLASS 12.0	27-14-11-26	ECLASS 13.0	27-25-01-09

## Approvals

Approvals



ROHS	Conform
UL File Number Search	UL Website
Certificate No. (cURus)	E60693

## Downloads

Approval/Certificate/Document of Conformity	<a href="#">DNVGL certificate</a> <a href="#">CB Testreport</a> <a href="#">CB Certificate</a> <a href="#">UKCA declaration of conformity</a>
Engineering Data	<a href="#">CAD data – STEP</a>
User Documentation	<a href="#">User Manual HTTB/ATTB 6</a>
Catalogues	<a href="#">Catalogues in PDF-format</a>

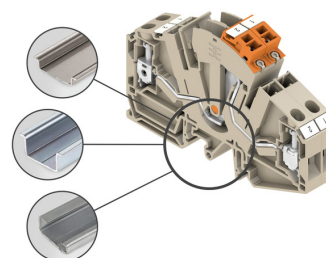
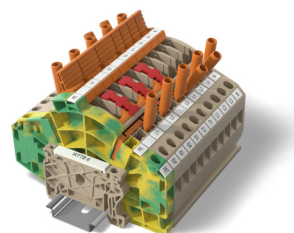
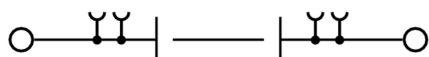


## WTTB 6 LTGY

**Weidmüller Interface GmbH & Co. KG**  
Klingenbergstraße 26  
D-32758 Detmold  
Germany

[www.weidmueller.com](http://www.weidmueller.com)

## Drawings





## WTTB 6 LTGY

Weidmüller Interface GmbH &amp; Co. KG

Klingenbergstraße 26

D-32758 Detmold

Germany

www.weidmueller.com

## Accessories

6 mm<sup>2</sup>

The plug-in cross-connections feature easy handling and quick installation. This saves a great deal of time during installation in comparison with screwed solutions.

## General ordering data

Type	ZQV 6N/2	Version
Order No.	<a href="#">1985740000</a>	Cross-connector (terminal), Plugged, Number of poles: 2, Pitch in mm
GTIN (EAN)	4050118370362	(P): 8.00, Insulated: Yes, 41 A, orange
Qty.	60 pc(s).	
Type	ZQV 6N/4	Version
Order No.	<a href="#">1985780000</a>	Cross-connector (terminal), Plugged, Number of poles: 4, Pitch in mm
GTIN (EAN)	4050118370287	(P): 8.00, Insulated: Yes, 41 A, orange
Qty.	60 pc(s).	
Type	ZQV 6N/10	Version
Order No.	<a href="#">2733970000</a>	Cross-connector (terminal), Plugged, Number of poles: 10, Pitch in mm
GTIN (EAN)	4064675066811	(P): 8.00, Insulated: Yes, 41 A, orange
Qty.	20 pc(s).	
Type	ZQV 6N/3 BL	Version
Order No.	<a href="#">1985840000</a>	Cross-connector (terminal), Plugged, Number of poles: 3, Pitch in mm
GTIN (EAN)	4050118370379	(P): 8.00, Insulated: Yes, 41 A, blue
Qty.	60 pc(s).	
Type	ZQV 6N/10 BL	Version
Order No.	<a href="#">2786910000</a>	Cross-connector (terminal), Plugged, Number of poles: 10, Pitch in mm
GTIN (EAN)	4064675064602	(P): 8.00, Insulated: Yes, 41 A, blue
Qty.	20 pc(s).	
Type	ZQV 6N/3	Version
Order No.	<a href="#">1985760000</a>	Cross-connector (terminal), Plugged, Number of poles: 3, Pitch in mm
GTIN (EAN)	4050118370263	(P): 8.00, Insulated: Yes, 41 A, orange
Qty.	60 pc(s).	
Type	ZQV 6N/7	Version
Order No.	<a href="#">2733960000</a>	Cross-connector (terminal), Plugged, Number of poles: 7, Pitch in mm
GTIN (EAN)	4064675066804	(P): 8.00, Insulated: Yes, 41 A, orange
Qty.	20 pc(s).	
Type	ZQV 6N/4 BL	Version
Order No.	<a href="#">1985850000</a>	Cross-connector (terminal), Plugged, Number of poles: 4, Pitch in mm
GTIN (EAN)	4050118370447	(P): 8.00, Insulated: Yes, 41 A, blue
Qty.	60 pc(s).	
Type	ZQV 6N/6 BL	Version
Order No.	<a href="#">2786890000</a>	Cross-connector (terminal), Plugged, Number of poles: 6, Pitch in mm
GTIN (EAN)	4064675064572	(P): 8.00, Insulated: Yes, 41 A, blue
Qty.	20 pc(s).	
Type	ZQV 6N/7 BL	Version
Order No.	<a href="#">2786900000</a>	Cross-connector (terminal), Plugged, Number of poles: 7, Pitch in mm
GTIN (EAN)	4064675064596	(P): 8.00, Insulated: Yes, 41 A, blue
Qty.	20 pc(s).	

Creation date June 4, 2024 2:11:26 PM CEST

Catalogue status 01.06.2024 / We reserve the right to make technical changes.



## WTTB 6 LTGY

Weidmüller Interface GmbH &amp; Co. KG

Klingenbergstraße 26

D-32758 Detmold

Germany

www.weidmueller.com

## Accessories

Type	ZQV 6N/6	Version
Order No.	<a href="#">2733950000</a>	Cross-connector (terminal), Plugged, Number of poles: 6, Pitch in mm
GTIN (EAN)	4064675066699	(P): 8.00, Insulated: Yes, 41 A, orange
Qty.	20 pc(s).	

## Test sockets



The test socket is used to connect test devices with a standard 4.0 plug with widths up to 10 mm into the terminal. Test sockets are arranged at an angle, therefore all standard measurements (even adjoining) can be realised within the terminal width of 8.1 mm. Once mounted, the test socket cannot be removed from the application.

## General ordering data

Type	TS TTB 6 BL	Version
Order No.	<a href="#">2710480000</a>	Socket (terminal), Depth: 51.3 mm
GTIN (EAN)	4050118880656	
Qty.	48 pc(s).	
Type	TS TTB 6 OR	Version
Order No.	<a href="#">2710470000</a>	Socket (terminal), Depth: 51.3 mm
GTIN (EAN)	4050118880649	
Qty.	48 pc(s).	
Type	TS TTB 6 VT	Version
Order No.	<a href="#">2710530000</a>	Socket (terminal), Plug-in depth: 11.5 mm, 0.00 mm, Depth: 51.3 mm
GTIN (EAN)	4050118881097	
Qty.	48 pc(s).	
Type	TS TTB 6 WT	Version
Order No.	<a href="#">2817250000</a>	Socket (terminal), Depth: 51.3 mm
GTIN (EAN)	4064675322566	
Qty.	48 pc(s).	
Type	TS TTB 6 RD	Version
Order No.	<a href="#">2710510000</a>	Socket (terminal), Depth: 51.3 mm
GTIN (EAN)	4050118881073	
Qty.	48 pc(s).	
Type	TS TTB 6 BK	Version
Order No.	<a href="#">2710520000</a>	Socket (terminal), Depth: 51.3 mm
GTIN (EAN)	4050118881080	
Qty.	48 pc(s).	
Type	TS TTB 6 YL	Version
Order No.	<a href="#">2710500000</a>	Socket (terminal), Depth: 51.3 mm
GTIN (EAN)	4050118881066	
Qty.	48 pc(s).	
Type	TS TTB 6 BR	Version
Order No.	<a href="#">2715540000</a>	Socket (terminal), Plug-in depth: 11.5 mm, 0.00 mm, Depth: 51.3 mm
GTIN (EAN)	4050118769609	
Qty.	48 pc(s).	



## WTTB 6 LTGY

Weidmüller Interface GmbH &amp; Co. KG

Klingenbergstraße 26

D-32758 Detmold

Germany

www.weidmueller.com

## Accessories

Type	TS TTB 6 GN	Version
Order No.	<a href="#">2710490000</a>	Socket (terminal), Depth: 51.3 mm
GTIN (EAN)	4050118880953	
Qty.	48 pc(s).	

## DEK 5/8



## WS/ DEK

MultiMark terminal markers use an innovative composite material made from two components. The hard base contour of the marker snaps securely into the connector. The elastic surface finish makes the marker easy to mount. This specially punched material enables the strips to be stretched to accommodate the slight variations in spacing that tend to add up, especially with long terminal blocks. Another advantage: the excellent printability of the surface material guarantees durable and wear-resistant labelling. A print resolution of 300 dpi also produces a very legible script.

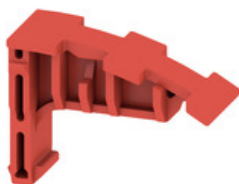
## Your benefits with MultiMark

- Firm hold and durable printing
- Continuous strips save installation time
- Easy mounting thanks to an innovative composite material
- Large label field for optimal legibility
- High flexibility thanks to manufacturer independence

## General ordering data

Type	DEK-A 5/8 MM WS	Version
Order No.	<a href="#">2448860000</a>	Dekafix, Terminal marker, 5 x 8.1 mm, Weidmueller, white
GTIN (EAN)	4050118462968	
Qty.	500 pc(s).	

## Switch lock



The switch lock can be easily inserted into the terminal from above. The switch lock prevents unauthorised opening or closing of circuits as it blocks the disconnect lever in its respective position.

## General ordering data

Type	SL TTB 6	Version
Order No.	<a href="#">2710220000</a>	Lockout device (terminal), PA 66/6, red
GTIN (EAN)	4050118893311	
Qty.	50 pc(s).	



## WTTB 6 LTGY

Weidmüller Interface GmbH &amp; Co. KG

Klingenbergstraße 26

D-32758 Detmold

Germany

www.weidmueller.com

## Accessories

## A-Series



Weidmüller's range of products includes end brackets that guarantee a permanent, reliable mounting on the terminal rail and prevent sliding. Versions with and without screws are available. The end brackets include marking options, also for group markers, and also a test plug holder.

## General ordering data

Type	AEB 35 SCL/1 V0	Version
Order No.	<a href="#">2661280000</a>	A-series, End bracket
GTIN (EAN)	4050118702163	
Qty.	20 pc(s).	
Type	AEB 35 SCL/1 V0 GY	Version
Order No.	<a href="#">2661290000</a>	A-series, End bracket
GTIN (EAN)	4050118702170	
Qty.	20 pc(s).	
Type	AEB 35 SCL/1 V0 BK	Version
Order No.	<a href="#">2661300000</a>	A-series, End bracket
GTIN (EAN)	4050118702187	
Qty.	20 pc(s).	

## End plate



## Current and voltage transformer wiring

Our test disconnect terminal blocks featuring spring and screw connection technology allow you to create all the important converter circuits for measuring current, voltage and power in a safe and sophisticated way.

## General ordering data

Type	EP TTB 6	Version
Order No.	<a href="#">2710170000</a>	A-series, End plate
GTIN (EAN)	4050118822229	
Qty.	20 pc(s).	



## WTTB 6 LTGY

Weidmüller Interface GmbH &amp; Co. KG

Klingenbergstraße 26

D-32758 Detmold

Germany

www.weidmueller.com

## Accessories

## Lever Link



## Current and voltage transformer wiring

Our test disconnect terminal blocks featuring spring and screw connection technology allow you to create all the important converter circuits for measuring current, voltage and power in a safe and sophisticated way.

## General ordering data

Type	LL TTB 6/2 CM BK	Version
Order No.	<a href="#">2710420000</a>	Locking lever (terminal)
GTIN (EAN)	4064675012641	
Qty.	50 pc(s).	
Type	LL TTB 6/1 VT	Version
Order No.	<a href="#">2710290000</a>	Locking lever (terminal)
GTIN (EAN)	4050118847970	
Qty.	50 pc(s).	
Type	LL TTB 6/2 CM	Version
Order No.	<a href="#">2710370000</a>	Locking lever (terminal)
GTIN (EAN)	4064675012092	
Qty.	50 pc(s).	
Type	LL TTB 6/2 CM RD	Version
Order No.	<a href="#">2710410000</a>	Locking lever (terminal)
GTIN (EAN)	4064675012634	
Qty.	50 pc(s).	
Type	LL TTB 6/2 RD	Version
Order No.	<a href="#">2710340000</a>	Locking lever (terminal)
GTIN (EAN)	4050118848281	
Qty.	50 pc(s).	
Type	LL TTB 6/2 VT	Version
Order No.	<a href="#">2710360000</a>	Locking lever (terminal)
GTIN (EAN)	4050118848267	
Qty.	50 pc(s).	
Type	LL TTB 6/1 WT	Version
Order No.	<a href="#">2817220000</a>	Locking lever (terminal)
GTIN (EAN)	4064675322535	
Qty.	50 pc(s).	
Type	LL TTB 6/1 BK	Version
Order No.	<a href="#">2710280000</a>	Locking lever (terminal)
GTIN (EAN)	4050118847963	
Qty.	50 pc(s).	
Type	LL TTB 6/2	Version
Order No.	<a href="#">2710300000</a>	Locking lever (terminal)
GTIN (EAN)	4050118848243	
Qty.	50 pc(s).	
Type	LL TTB 6/4	Version
Order No.	<a href="#">2710450000</a>	Locking lever (terminal)
GTIN (EAN)	4050118848229	
Qty.	25 pc(s).	

Creation date June 4, 2024 2:11:26 PM CEST



## WTTB 6 LTGY

Weidmüller Interface GmbH &amp; Co. KG

Klingenbergstraße 26

D-32758 Detmold

Germany

www.weidmueller.com

## Accessories

Type	LL TTB 6/2 CM YL	Version
Order No.	<a href="#">2710400000</a>	Locking lever (terminal)
GTIN (EAN)	4064675012627	
Qty.	50 pc(s).	
Type	LL TTB 6/3 CM	Version
Order No.	<a href="#">2726100000</a>	Locking lever (terminal)
GTIN (EAN)	4064675012665	
Qty.	50 pc(s).	
Type	LL TTB 6/1 BR	Version
Order No.	<a href="#">2762590000</a>	Locking lever (terminal)
GTIN (EAN)	4064675018377	
Qty.	50 pc(s).	
Type	LL TTB 6/2 BR	Version
Order No.	<a href="#">2762600000</a>	Locking lever (terminal)
GTIN (EAN)	4064675018384	
Qty.	50 pc(s).	
Type	LL TTB 6/2 CM WT	Version
Order No.	<a href="#">2817240000</a>	Locking lever (terminal)
GTIN (EAN)	4064675322559	
Qty.	50 pc(s).	
Type	LL TTB 6/2 CM BL	Version
Order No.	<a href="#">2710380000</a>	Locking lever (terminal)
GTIN (EAN)	4064675012603	
Qty.	50 pc(s).	
Type	LL TTB 6/6	Version
Order No.	<a href="#">2710460000</a>	Locking lever (terminal)
GTIN (EAN)	4050118848212	
Qty.	10 pc(s).	
Type	LL TTB 6/2 BK	Version
Order No.	<a href="#">2710350000</a>	Locking lever (terminal)
GTIN (EAN)	4050118848274	
Qty.	50 pc(s).	
Type	LL TTB 6/2 CM BR	Version
Order No.	<a href="#">2762610000</a>	Locking lever (terminal)
GTIN (EAN)	4064675018391	
Qty.	50 pc(s).	
Type	LL TTB 6/2 CM GN	Version
Order No.	<a href="#">2710390000</a>	Locking lever (terminal)
GTIN (EAN)	4064675012610	
Qty.	50 pc(s).	
Type	LL TTB 6/2 CM VT	Version
Order No.	<a href="#">2710430000</a>	Locking lever (terminal)
GTIN (EAN)	4064675012658	
Qty.	50 pc(s).	
Type	LL TTB 6/1 RD	Version
Order No.	<a href="#">2710270000</a>	Locking lever (terminal)
GTIN (EAN)	4050118847956	
Qty.	50 pc(s).	
Type	LL TTB 6/1 BL	Version
Order No.	<a href="#">2710240000</a>	Locking lever (terminal)
GTIN (EAN)	4050118847918	
Qty.	50 pc(s).	

Creation date June 4, 2024 2:11:26 PM CEST

Catalogue status 01.06.2024 / We reserve the right to make technical changes.



## WTTB 6 LTGY

Weidmüller Interface GmbH &amp; Co. KG

Klingenbergstraße 26

D-32758 Detmold

Germany

www.weidmueller.com

## Accessories

Type	LL TTB 6/2 WT	Version
Order No.	<a href="#">2817230000</a>	Locking lever (terminal)
GTIN (EAN)	4064675322542	
Qty.	50 pc(s).	
Type	LL TTB 6/1 YL	Version
Order No.	<a href="#">2710260000</a>	Locking lever (terminal)
GTIN (EAN)	4050118893335	
Qty.	50 pc(s).	
Type	LL TTB 6/3	Version
Order No.	<a href="#">2710440000</a>	Locking lever (terminal)
GTIN (EAN)	4050118848236	
Qty.	50 pc(s).	
Type	LL TTB 6/2 BL	Version
Order No.	<a href="#">2710310000</a>	Locking lever (terminal)
GTIN (EAN)	4050118848250	
Qty.	50 pc(s).	
Type	LL TTB 6/1 GN	Version
Order No.	<a href="#">2710250000</a>	Locking lever (terminal)
GTIN (EAN)	4050118847949	
Qty.	50 pc(s).	
Type	LL TTB 6/1	Version
Order No.	<a href="#">2710230000</a>	Locking lever (terminal)
GTIN (EAN)	4050118847925	
Qty.	50 pc(s).	
Type	LL TTB 6/2 GN	Version
Order No.	<a href="#">2710320000</a>	Locking lever (terminal)
GTIN (EAN)	4050118848328	
Qty.	50 pc(s).	
Type	LL TTB 6/2 YL	Version
Order No.	<a href="#">2710330000</a>	Locking lever (terminal)
GTIN (EAN)	4050118848311	
Qty.	50 pc(s).	
Type	LL TTB 6/4 CM	Version
Order No.	<a href="#">2726110000</a>	Locking lever (terminal)
GTIN (EAN)	4064675012672	
Qty.	50 pc(s).	



## WTTB 6 LTGY

Weidmüller Interface GmbH &amp; Co. KG

Klingenbergstraße 26

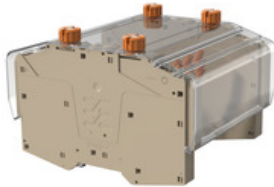
D-32758 Detmold

Germany

www.weidmueller.com

## Accessories

## Cover profiles



## Current and voltage transformer wiring

Our test disconnect terminal blocks featuring spring and screw connection technology allow you to create all the important converter circuits for measuring current, voltage and power in a safe and sophisticated way.

## General ordering data

Type	CP TTB	Version
Order No.	<a href="#">2710140000</a>	Cover hood (terminal)
GTIN (EAN)	4064675014171	
Qty.	10 pc(s).	
Type	CS TTB	Version
Order No.	<a href="#">2710150000</a>	A-series, End bracket
GTIN (EAN)	4064675021148	
Qty.	10 pc(s).	
Type	CH TTB	Version
Order No.	<a href="#">2710130000</a>	Cover hood (terminal)
GTIN (EAN)	4064675021155	
Qty.	1 pc(s).	

## Shorting elements



The short circuit bridge can be simply and quickly inserted into the terminal blocks. If several levers are connected simultaneously with the lever connector, the make before break can be realised. Once mounted, the short circuit bridge cannot be removed from the application.

## General ordering data

Type	SCCB TTB 6/4	Version
Order No.	<a href="#">2710210000</a>	Cross-connector (terminal), Plugged, Number of poles: 4, Pitch in mm
GTIN (EAN)	4050118848007	(P): 8.10, Insulated: Yes, 30 A, orange
Qty.	25 pc(s).	
Type	SCCB TTB 6/2	Version
Order No.	<a href="#">2710190000</a>	Cross-connector (terminal), Plugged, Number of poles: 2, Pitch in mm
GTIN (EAN)	4050118847987	(P): 8.10, Insulated: Yes, 30 A, orange
Qty.	25 pc(s).	
Type	SCCB TTB 6/3	Version
Order No.	<a href="#">2710200000</a>	Cross-connector (terminal), Plugged, Number of poles: 3, Pitch in mm
GTIN (EAN)	4050118847994	(P): 8.10, Insulated: Yes, 30 A, orange
Qty.	25 pc(s).	



**WTTB 6 LTGY****Weidmüller Interface GmbH & Co. KG**

Klingenbergstraße 26

D-32758 Detmold

Germany

[www.weidmueller.com](http://www.weidmueller.com)**Accessories****Blank**

The Dekafix (DEK) marker is the universal marker for all conductor and plug-in connectors as well as for electronic sub-assemblies. The system is ideal for short number sequences and covers a wide range of ready-printed markers.

Strips for fast installation in only one work step. The printing is easy to read, rich in contrast and available in various widths.

- Large range of ready-to-use markers
- Strips for fast installation
- Terminal markers, suitable for all Weidmüller cable connectors
- Available as blank MultiCard or with standard printing

**For custom printing:** Please send us a file of our labeling software M-Print PRO or M-Print PRO Online (without installation) for your labeling specifications.

**General ordering data**

Type	DEK 5/8-11.5 MC NE WS	Version
Order No.	<a href="#">1341630000</a>	Dekafix, Terminal marker, 5 x 8 mm, Pitch in mm (P): 8.00
GTIN (EAN)	4050118145946	Weidmueller, white
Qty.	500 pc(s).	