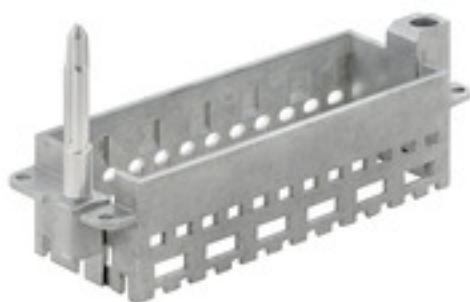


HDC MFGL 24B FA**Weidmüller Interface GmbH & Co. KG**

Klingenbergstraße 26

D-32758 Detmold

Germany

www.weidmueller.com**General ordering data**

Version	Frame
Order No.	2737040000
Type	HDC MFGL 24B FA
GTIN (EAN)	4050118823097
Qty.	1 pc(s).

HDC MFGL 24B FA**Weidmüller Interface GmbH & Co. KG**

Klingenbergstraße 26

D-32758 Detmold

Germany

www.weidmueller.com**Technical data****Dimensions and weights**

Net weight	91.7 g
------------	--------

General data

Material	Diecast zinc	Number of slots	6
Plugging cycles	≥ 500	Series	ModuPlug
Size	8	Version of guiding pin	long

Classifications

ETIM 6.0	EC002312	ETIM 7.0	EC002312
ETIM 8.0	EC002312	ETIM 9.0	EC002312
ECLASS 9.0	27-44-02-06	ECLASS 9.1	27-44-02-06
ECLASS 10.0	27-44-02-06	ECLASS 11.0	27-44-02-06
ECLASS 12.0	27-44-02-92	ECLASS 13.0	27-44-02-92

Environmental Product Compliance

REACH SVHC	Lead 7439-92-1
SCIP	425d5315-3039-4ee5-aab3-6b6a65cc297f

Important note

Product information	The PE connection is no longer available for the version with guide pin.
---------------------	--

Downloads

Engineering Data	CAD data – STEP
Catalogues	Catalogues in PDF-format

HDC MFGL 24B FA**Weidmüller Interface GmbH & Co. KG**

Klingenbergstraße 26

D-32758 Detmold

Germany

www.weidmueller.com**Drawings**