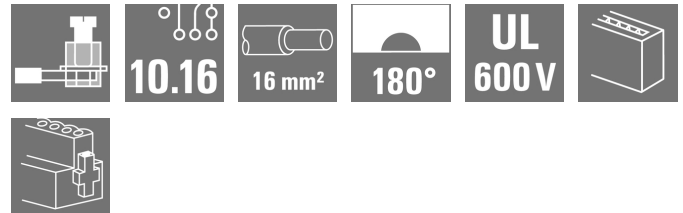


**BUZ 10.16IT/04/180MSF2SH200 AG BK BX****Weidmüller Interface GmbH & Co. KG**

Klingenbergstraße 26

D-32758 Detmold

Germany

[www.weidmueller.com](http://www.weidmueller.com)**Product image****OMNIMATE Power for IT networks – scalable to 50 kVA****Tailor-made solutions for special requirements**

More standard-compliance means fewer compromises: OMNIMATE Power for IT networks has integrated features incorporated as standard across the range. This makes the design-in and approvals process simpler and makes them safer and more reliable in operation.

Results for the application and advantages for the user: unlimited use in 400-V IT systems and touch safety according to IEC 61800-5-1 (+ 5.5 mm). The self-snapping one-handed safety flange enables intuitive and safe usage. Operational reliability is guaranteed by the automatic interlock feature during the plug-in process.

In conclusion: You need no additional device covering.

The application-oriented design means that no compromises are necessary during the approval process.

Including pre-assembled pluggable shield connection for large area shielding in your application.

**General ordering data**

|              |   |
|--------------|---|
| Version      | PCB plug-in connector, female plug, 10.16 mm, Number of poles: 4, 180°, Clamping yoke connection, Clamping range, max. : 16 mm² |
| Order No.    | <a href="#">2627590000</a>  |
| Type         | BUZ 10.16IT/04/180MSF2SH200 AG BK BX  |
| GTIN (EAN)   | 4050118631470   |
| Qty.         | 20 pc(s).   |
| Product data | IEC: 1000 V / 78.3 A / 0.2 - 16 mm²<br>UL: 600 V / 60 A / AWG 22 - AWG 4  |

**BUZ 10.16IT/04/180MSF2SH200 AG BK BX****Weidmüller Interface GmbH & Co. KG**

Klingenbergstraße 26

D-32758 Detmold

Germany

www.weidmueller.com

**Technical data****Dimensions and weights**

Net weight 0 g

**System Parameters**

|  |                                       |  |                    |
|--|---------------------------------------|--|--------------------|
| Product family                               | OMNIMATE Power - series BU/SU 10.16IT | Type of connection                         | Field connection   |
| Wire connection method                       | Clamping yoke connection              | Pitch in mm (P)                            | 10.16 mm           |
| Pitch in inches (P)                          | 0.4 "                                 | Conductor outlet direction                 | 180°               |
| Number of poles                              | 4                                     | L1 in mm                                   | 40.64 mm           |
| L1 in inches                                 | 1.6 "                                 | Number of rows                             | 1                  |
| Pin series quantity                          | 1                                     | Rated cross-section                        | 16 mm <sup>2</sup> |
| Touch-safe protection acc. to DIN VDE 57 106 | Safe from finger touch                | Touch-safe protection acc. to DIN VDE 0470 | IP 20              |
| Volume resistance                            | 4.50 mΩ                               | Can be coded                               | Yes                |
| Stripping length                             | 12 mm                                 | Tightening torque for screw flange, min.   | 0.3 Nm             |
| Tightening torque for screw flange, max.     | 0.4 Nm                                | Tightening torque, min.                    | 1.2 Nm             |
| Tightening torque, max.                      | 2 Nm                                  | Clamping screw                             | M 4                |
| Screwdriver blade standard                   | DIN 5264, ISO 8764/2-PZ               | Plugging cycles                            | 25                 |
| Plugging force/pole, max.                    | 14.5 N                                | Pulling force/pole, max.                   | 14.5 N             |

**Material data**

|                                       |           |                                       |               |
|---------------------------------------|-----------|---------------------------------------|---------------|
| Insulating material                   | PA GF     | Colour                                | black         |
| Colour chart (similar)                | RAL 9011  | Insulating material group             | I             |
| Comparative Tracking Index (CTI)      | ≥ 600     | UL 94 flammability rating             | V-0           |
| Contact material                      | Cu-alloy  | Contact surface                       | silver-plated |
| Layer structure of plug contact       | ≥ 3 μm Ag | Storage temperature, min.             | -40 °C        |
| Storage temperature, max.             | 70 °C     | Operating temperature, min.           | -50 °C        |
| Operating temperature, max.           | 130 °C    | Temperature range, installation, min. | -25 °C        |
| Temperature range, installation, max. | 130 °C    |                                       |               |

**Conductors suitable for connection**

|  |                     |
|--|---------------------|
| Clamping range, min.   | 0.2 mm <sup>2</sup> |
| Clamping range, max.   | 16 mm <sup>2</sup>  |
| Wire connection cross section AWG, min.                              | AWG 22              |
| Wire connection cross section AWG, max.                              | AWG 4               |
| Solid, min. H05(07) V-U  | 0.2 mm <sup>2</sup> |
| Solid, max. H05(07) V-U  | 16 mm <sup>2</sup>  |
| Stranded, min. H07V-R  | 6 mm <sup>2</sup>   |
| Stranded, max. H07V-R  | 16 mm <sup>2</sup>  |
| Flexible, min. H05(07) V-K   | 0.5 mm <sup>2</sup> |
| Flexible, max. H05(07) V-K   | 16 mm <sup>2</sup>  |
| w. plastic collar ferrule, DIN 46228 pt 4, 0.25 mm <sup>2</sup> min. |                     |
| w. plastic collar ferrule, DIN 46228 pt 4, 16 mm <sup>2</sup> max.   |                     |
| w. wire end ferrule, DIN 46228 pt 1, 0.25 mm <sup>2</sup> min.       |                     |
| w. wire end ferrule, DIN 46228 pt 1, 16 mm <sup>2</sup> max.         |                     |
| Plug gauge in accordance with EN 60999 a x b; ø                      | 5.3mm (B6)          |

Creation date July 4, 2024 9:05:16 PM CEST

**BUZ 10.16IT/04/180MSF2SH200 AG BK BX****Weidmüller Interface GmbH & Co. KG**

Klingenbergstraße 26

D-32758 Detmold

Germany

www.weidmueller.com

**Technical data**

|  |  |                             |                     |
|--|--|-----------------------------|---------------------|
| Clampable conductor                    | Cross-section for conductor connection | Type                        | fine-wired          |
|  |  | nominal                     | 0.5 mm <sup>2</sup> |
| wire end ferrule                       | Stripping length                       | nominal                     | 14 mm               |
|  | Recommended wire-end ferrule           | <a href="#">H0.5/18 OR</a>  |                     |
| Cross-section for conductor connection | Type                                   | fine-wired                  |                     |
|  | nominal                                | 1 mm <sup>2</sup>           |                     |
| wire end ferrule                       | Stripping length                       | nominal                     | 15 mm               |
|  | Recommended wire-end ferrule           | <a href="#">H1.0/18 GE</a>  |                     |
| Cross-section for conductor connection | Type                                   | fine-wired                  |                     |
|  | nominal                                | 1.5 mm <sup>2</sup>         |                     |
| wire end ferrule                       | Stripping length                       | nominal                     | 15 mm               |
|  | Recommended wire-end ferrule           | <a href="#">H1.5/18D SW</a> |                     |
| Stripping length                       | nominal                                | 12 mm                       |                     |
|  | Recommended wire-end ferrule           | <a href="#">H1.5/12</a>     |                     |
| Cross-section for conductor connection | Type                                   | fine-wired                  |                     |
|  | nominal                                | 0.75 mm <sup>2</sup>        |                     |
| wire end ferrule                       | Stripping length                       | nominal                     | 14 mm               |
|  | Recommended wire-end ferrule           | <a href="#">H0.75/18 W</a>  |                     |
| Cross-section for conductor connection | Type                                   | fine-wired                  |                     |
|  | nominal                                | 2.5 mm <sup>2</sup>         |                     |
| wire end ferrule                       | Stripping length                       | nominal                     | 14 mm               |
|  | Recommended wire-end ferrule           | <a href="#">H2.5/19D BL</a> |                     |
| Stripping length                       | nominal                                | 12 mm                       |                     |
|  | Recommended wire-end ferrule           | <a href="#">H2.5/12</a>     |                     |
| Cross-section for conductor connection | Type                                   | fine-wired                  |                     |
|  | nominal                                | 4 mm <sup>2</sup>           |                     |
| wire end ferrule                       | Stripping length                       | nominal                     | 12 mm               |
|  | Recommended wire-end ferrule           | <a href="#">H4.0/12</a>     |                     |
| Stripping length                       | nominal                                | 14 mm                       |                     |
|  | Recommended wire-end ferrule           | <a href="#">H4.0/20D GR</a> |                     |
| Cross-section for conductor connection | Type                                   | fine-wired                  |                     |
|  | nominal                                | 6 mm <sup>2</sup>           |                     |
| wire end ferrule                       | Stripping length                       | nominal                     | 14 mm               |
|  | Recommended wire-end ferrule           | <a href="#">H6.0/20 SW</a>  |                     |
| Stripping length                       | nominal                                | 12 mm                       |                     |
|  | Recommended wire-end ferrule           | <a href="#">H6.0/12</a>     |                     |
| Cross-section for conductor connection | Type                                   | fine-wired                  |                     |
|  | nominal                                | 10 mm <sup>2</sup>          |                     |
| wire end ferrule                       | Stripping length                       | nominal                     | 12 mm               |
|  | Recommended wire-end ferrule           | <a href="#">H10.0/12</a>    |                     |
| Stripping length                       | nominal                                | 15 mm                       |                     |
|  | Recommended wire-end ferrule           | <a href="#">H10.0/22 EB</a> |                     |
| Cross-section for conductor connection | Type                                   | fine-wired                  |                     |
|  | nominal                                | 16 mm <sup>2</sup>          |                     |
| wire end ferrule                       | Stripping length                       | nominal                     | 12 mm               |
|  | Recommended wire-end ferrule           | <a href="#">H16.0/12</a>    |                     |
| Stripping length                       | nominal                                | 15 mm                       |                     |
|  | Recommended wire-end ferrule           | <a href="#">H16.0/22 GN</a> |                     |

Creation date July 4, 2024 9:05:16 PM CEST

**BUZ 10.16IT/04/180MSF2SH200 AG BK BX****Weidmüller Interface GmbH & Co. KG**

Klingenbergstraße 26

D-32758 Detmold

Germany

www.weidmueller.com

**Technical data**

Reference text

Length of ferrules is to be chosen depending on the product and the rated voltage.

**Rated data acc. to IEC**

|   |                        |   |                   |
|---|------------------------|---|-------------------|
| tested acc. to standard   | IEC 60664-1, IEC 61984 | Rated current, min. number of poles (Tu=20°C)                         | 78.3 A            |
| Rated current, max. number of poles (Tu=20°C)                             | 67.9 A                 | Rated current, min. number of poles (Tu=40°C)                         | 70.6 A            |
| Rated current, max. number of poles (Tu=40°C)                             | 61.3 A                 | Rated voltage for surge voltage class / pollution degree II/2         | 1,000 V           |
| Rated voltage for surge voltage class / pollution degree III/2            | 1,000 V                | Rated voltage for surge voltage class / pollution degree III/3        | 1,000 V           |
| Rated impulse voltage for surge voltage class/ pollution degree II/2      | 6 kV                   | Rated impulse voltage for surge voltage class/ pollution degree III/2 | 8 kV              |
| Rated impulse voltage for surge voltage class/ contamination degree III/3 | 8 kV                   | Short-time withstand current resistance                               | 3 x 1s mit 1000 A |
| Clearance, min.   | 15.1 mm                | Creepage distance, min.   | 15.1 mm           |

**Rated data acc. to CSA**

|                                   |        |                                   |       |
|-----------------------------------|--------|-----------------------------------|-------|
| Rated voltage (Use group B / CSA) | 600 V  | Rated voltage (Use group C / CSA) | 600 V |
| Rated voltage (Use group D / CSA) | 600 V  | Rated current (Use group B / CSA) | 60 A  |
| Rated current (Use group C / CSA) | 60 A   | Rated current (Use group D / CSA) | 5 A   |
| Wire cross-section, AWG, min.     | AWG 22 | Wire cross-section, AWG, max.     | AWG 4 |

**Rated data acc. to UL 1059**

|                                       |        |                                       |       |
|---------------------------------------|--------|---------------------------------------|-------|
| Rated voltage (Use group B / UL 1059) | 600 V  | Rated voltage (Use group C / UL 1059) | 600 V |
| Rated voltage (Use group D / UL 1059) | 600 V  | Rated current (Use group B / UL 1059) | 60 A  |
| Rated current (Use group C / UL 1059) | 60 A   | Rated current (Use group D / UL 1059) | 5 A   |
| Wire cross-section, AWG, min.         | AWG 22 | Wire cross-section, AWG, max.         | AWG 4 |

**Packing**

|            |        |           |        |
|------------|--------|-----------|--------|
| VPE length | 352 mm | VPE width | 162 mm |
| VPE height | 105 mm |           |        |

**Classifications**

|             |             |             |             |
|-------------|-------------|-------------|-------------|
| ETIM 6.0    | EC002638    | ETIM 7.0    | EC002638    |
| ETIM 8.0    | EC002638    | ETIM 9.0    | EC002638    |
| ECLASS 9.0  | 27-44-03-09 | ECLASS 9.1  | 27-44-03-09 |
| ECLASS 10.0 | 27-44-03-09 | ECLASS 11.0 | 27-46-02-02 |
| ECLASS 12.0 | 27-46-02-02 | ECLASS 13.0 | 27-46-02-02 |

**Environmental Product Compliance**

|            |                                      |
|------------|--------------------------------------|
| REACH SVHC | Lead 7439-92-1                       |
| SCIP       | 8295bd8f-de43-48c8-b6fb-ccac7a7a6168 |

**BUZ 10.16IT/04/180MSF2SH200 AG BK BX****Weidmüller Interface GmbH & Co. KG**

Klingenbergstraße 26

D-32758 Detmold

Germany

[www.weidmueller.com](http://www.weidmueller.com)**Technical data****Important note**

|                |   |
|----------------|---|
| IPC conformity | Conformity: The products are developed, manufactured and delivered according international recognized standards and norms and comply with the assured properties in the data sheet resp. fulfill decorative properties in accordance with IPC-A-610 "Class 2". Further claims on the products can be evaluated on request.  |
| Notes          | <ul style="list-style-type: none"><li>• Additional variants on request</li><li>• Rated current related to rated cross-section &amp; min. No. of poles.</li><li>• Wire end ferrule with plastic collar to DIN 46228/4</li><li>• Wire end ferrule without plastic collar to DIN 46228/1</li><li>• P on drawing = pitch</li><li>• Rated data refer only to the component itself. Clearance and creepage distances to other components are to be designed in accordance with the relevant application standards.</li><li>• For all applications with flange we recommend to fix the pin header with the help of the soldering flange or a self-tapping screw on the board.</li><li>• In accordance with IEC 61984, OMNIMATE-connectors are connectors without breaking capacity (COC). During designated use, connectors are not allowed to be engaged or disengaged when live or under load</li><li>• Long term storage of the product with average temperature of 50 °C and maximum humidity 70%, 36 months</li></ul> |

**Downloads**

|                             |  |
|-----------------------------|--|
| Product Change Notification | <a href="#">20220208 Visual change Temporarily different color for connectors and accessories</a><br><a href="#">20220208 Visuelle Änderung Vorübergehend anderer Farbton für Steckverbinder und Zubehör</a> |
| Catalogues                  | <a href="#">Catalogues in PDF-format</a>   |

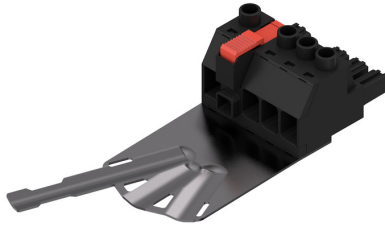
## BUZ 10.16IT/04/180MSF2SH200 AG BK BX

**Weidmüller Interface GmbH & Co. KG**  
Klingenbergstraße 26  
D-32758 Detmold  
Germany

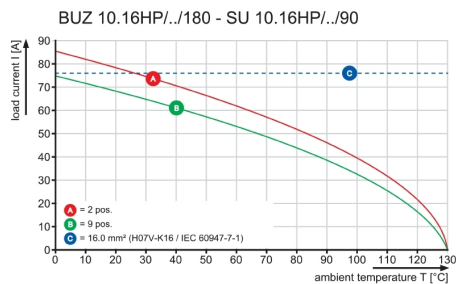
[www.weidmueller.com](http://www.weidmueller.com)

## Drawings

### Product image



### Graph



### Graph

