

**RJ45C6 T1V 3.0N4N TY****Weidmüller Interface GmbH & Co. KG**

Klingenbergstraße 26

D-32758 Detmold

Germany

www.weidmueller.com



The product range encompasses the following designs:

- 90°, lying (horizontal) and 180°, standing (vertical)
- latch up / latch down
- THT, THR or SMD soldering processes
- Wide range of different design types, also with integrated LEDs and shield contact tabs
- Performance category Cat. 3 to Cat. 6
- Packed either in a tray (TY) or on a roll (tape-on-reel, RL)
- Compatible with modular RJ45 connector according to ANSI / TIA-1096-A and IEC 60603
- Dielectric strength  $\geq 1500$  V AC RMS (2250 V AC peak value) according to IEEE 802.3
- Dielectric strength  $\geq 1500$  V AC (peak value) or  $\geq 1500$  V DC according to IEC 60603

Properties and advantages:

- Extended temperature range of  $-40^{\circ}\text{C}$  to  $+85^{\circ}\text{C}$  for maximum performance
- Reinforced gold layer (30 $\mu\text{m}$ ) for improved corrosion protection
- At least 0.3mm stand-off ensures a perfect soldering result

**General ordering data**

Version	PCB plug-in connector, RJ45 jacks, Cat. 6 , THT solder connection, 180°, Shield tabs: none, 30...80 $\mu\text{m}$ Ni / $\geq 30$ $\mu\text{m}$ Au , LED: No, Number of poles: 8, Tray (manual assembly)
Order No.	<a href="#">2626050000</a>
Type	RJ45C6 T1V 3.0N4N TY
GTIN (EAN)	4050118630190
Qty.	160 pc(s).
Packaging	Tray (manual assembly)

## RJ45C6 T1V 3.0N4N TY

Weidmüller Interface GmbH &amp; Co. KG

Klingenbergstraße 26

D-32758 Detmold

Germany

www.weidmueller.com

## Technical data

## Dimensions and weights

Depth	16.2 mm	Depth (inches)	0.638 inch
Height	16.5 mm	Height (inches)	0.65 inch
Height of lowest version	16.5 mm	Width	15.8 mm
Width (inches)	0.622 inch	Net weight	6.719 g

## System specifications

Category	Cat. 6	LED	No
Mounting onto the PCB	THT solder connection	Number of poles	8
Number of solder pins per pole	1	Outgoing elbow	180°
Performance-Category	Cat. 6	Pitch in inches (P)	0.05 "
Pitch in mm (P)	1.27 mm	Plugging cycles	750
Product family	OMNIMATE Data - RJ45 modular jack	Protection degree	IP20
Shield surface	nickel-plated	Shield tabs	none
Shielding	Yes	Shielding material	Brass, nickel-plated
Solder pin dimensions	Octagonal	Solder pin length (l)	3 mm
Soldering process	Manual soldering, Wave soldering	Tolerance of solder pin position	± 0.1 mm
Type of connection	Solder connection		

## Electrical properties

Dielectric strength, contact / contact	1000 V DC	Dielectric strength, contact / shield	1500 V DC
Insulation strength	≥ 500 MΩ	PoE / PoE+	conforming to IEEE 802.3at
Rated current	1.5 A	Rated voltage	125 V
Volume resistance	<25 mΩ		

## Standards

Connector standard	IEC 60603-7
--------------------	-------------

## Material data

Insulating material	PA 66	Colour	black
Colour chart (similar)	RAL 9011	Insulation strength	≥ 500 MΩ
UL 94 flammability rating	V-0	Contact material	Cu-alloy
Contact surface	Gold over nickel	Layer structure of plug contact	30...80 µ" Ni / ≥ 30 µ" Au
Operating temperature, min.	-40 °C	Operating temperature, max.	85 °C

## Packing

Packaging	Tray (manual assembly)	VPE length	321 mm
VPE width	190 mm	VPE height	67 mm

## Classifications

ETIM 6.0	EC002637	ETIM 7.0	EC002637
ETIM 8.0	EC002637	ETIM 9.0	EC002637
ECLASS 9.0	27-44-04-02	ECLASS 9.1	27-44-04-02
ECLASS 10.0	27-44-04-02	ECLASS 11.0	27-46-02-01
ECLASS 12.0	27-46-02-01	ECLASS 13.0	27-46-02-01

## RJ45C6 T1V 3.0N4N TY

**Weidmüller Interface GmbH & Co. KG**  
Klingenbergstraße 26  
D-32758 Detmold  
Germany

[www.weidmueller.com](http://www.weidmueller.com)

## Technical data

## Environmental Product Compliance

REACH SVHC

/

## Approvals

Approvals



ROHS	Conform
UL File Number Search	UL Website
Certificate No. (cURus)	E471884

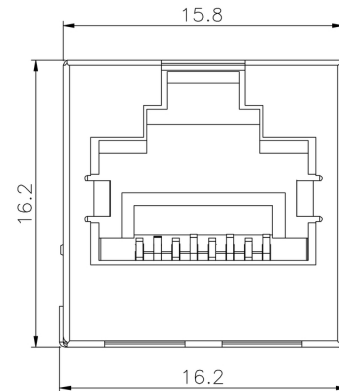
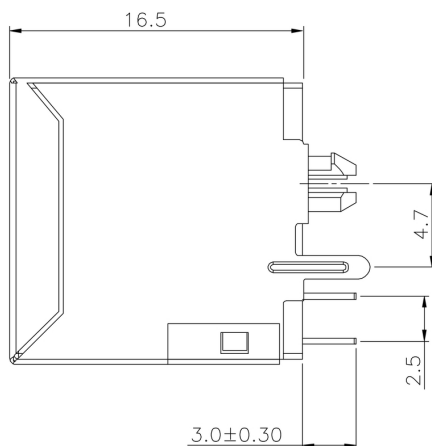
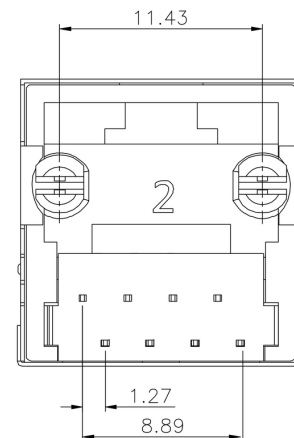
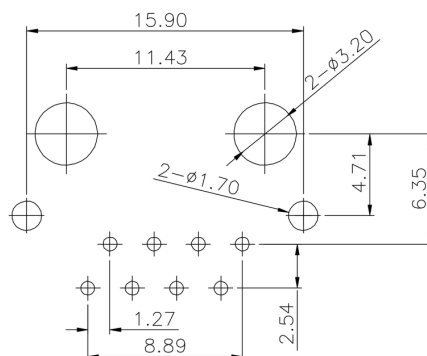
## Downloads

Approval/Certificate/Document of Conformity	<a href="#">Certificate of Compliance</a>
Engineering Data	<a href="#">CAD data – STEP</a>
Catalogues	<a href="#">Catalogues in PDF-format</a>

**RJ45C6 T1V 3.0N4N TY**

**Weidmüller Interface GmbH & Co. KG**  
 Klingenbergstraße 26  
 D-32758 Detmold  
 Germany

[www.weidmueller.com](http://www.weidmueller.com)

**Drawings**
**Dimensioned drawing**

**Dimensioned drawing**

**Dimensioned drawing**

**PCB design**


**RJ45C6 T1V 3.0N4N TY**

**Weidmüller Interface GmbH & Co. KG**  
Klingenbergstraße 26  
D-32758 Detmold  
Germany

[www.weidmueller.com](http://www.weidmueller.com)

**Drawings**

RJ45	G1	R	1	U	3.2	E	4	GY/GY	TY	RJ45G1 R1U 3.2E4GY/GY TY
										<b>Packaging</b>
										<b>TY</b>
										Tray in box (manual assembly)
										Tape on <b>Reel</b> (automated assembly)
										<b>LED</b>
										<b>Y/G</b>
										Yellow/Green
										<b>G/Y</b>
										Green/Yellow (standard)
										<b>GY/GY</b>
										Green-Yellow/Green-Yellow
										<b>O/G</b>
										Orange/Green
										<b>R/O</b>
										Red/Orange
										... (further combinations possible)
										<b>N</b>
										without LED
										<b>Contact surface thickness</b>
										<b>4</b>
										1 = 3µ", 2 = 6µ", 3 = 15µ", 4 = 30µ", 5 = 50µ"
										<b>EMI tabs (ground fingers)</b>
										<b>E</b>
										E = with EMI tabs
										<b>N</b>
										N = without EMI tabs
										<b>Solder Pin length</b>
										<b>3.2</b>
										3.2 mm
										<b>1.6</b>
										1.6 mm
										<b>D</b>
										SMD
										<b>Direction, latch style</b>
										<b>U</b>
										Horizontal (90°, side entry), latch up
										<b>D</b>
										Horizontal (90°, side entry), latch down
										<b>V</b>
										Vertical (180°, top entry)
										<b>Y</b>
										Diagonal (45°), latch up
										<b>Number of Ports</b>
										<b>1</b>
										1 Port
										<b>12; 14; ...</b>
										multi ports side by side, Multiport
										<b>21; 41; ...</b>
										multi ports about each other, Multilevel
										<b>Assembly on PCB</b>
										<b>R</b>
										Through Hole Reflow - THR
										Soldering process: Wave or Reflow soldering
										<b>S</b>
										Surface Mount Technology - SMT
										Soldering process: Reflow soldering
										<b>T</b>
										Through Hole Technology - THT
										Soldering process: Wave
										<b>Performance Category</b>
										<b>C5</b>
										Category 5
										<b>C6</b>
										Category 6
										<b>C6A</b>
										Category 6A
										<b>C5e</b>
										Category 5e
										<b>M</b>
										10/100 Mbit
										<b>G1</b>
										10/100/1000 Mbit
										<b>G10</b>
										10 Gbit
										<b>U</b>
										Unshielded
										<b>MP</b>
										10/100 Mbit with POE
										<b>MP+</b>
										10/100 Mbit with POE+

## Legend

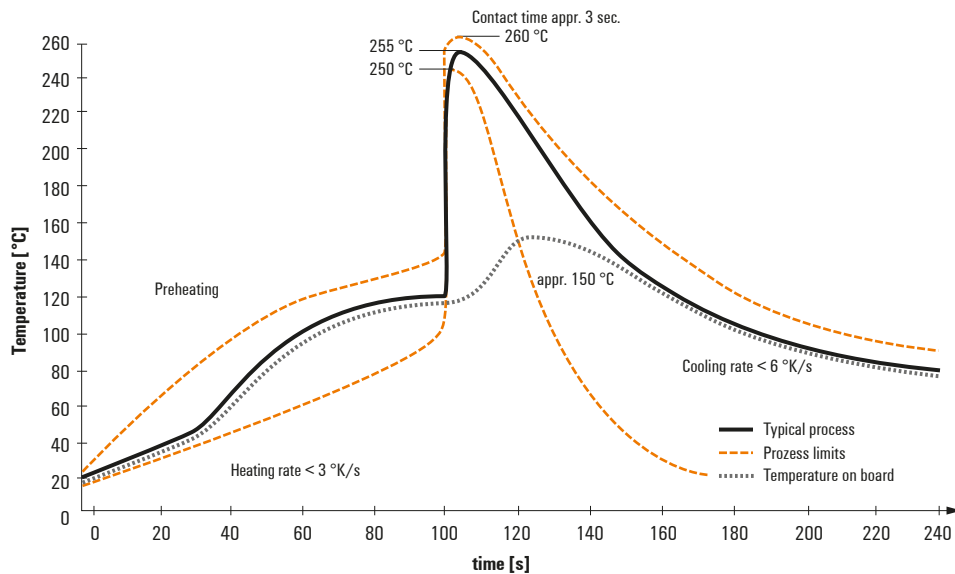
Creation date July 14, 2024 12:06:11 PM CEST

Catalogue status 29.06.2024 / We reserve the right to make technical changes.

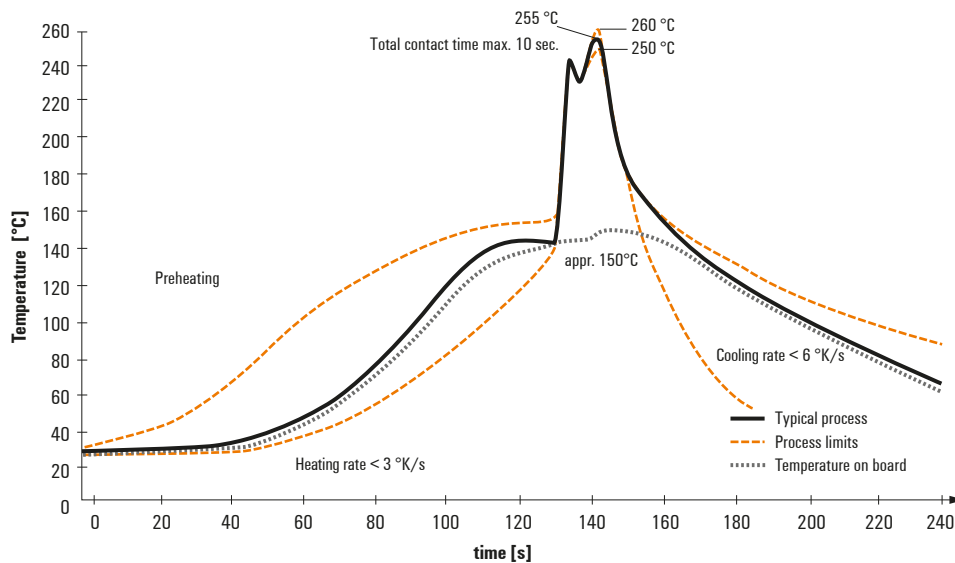
## Recommended wave soldering profiles

**Weidmüller Interface GmbH & Co. KG**  
Klingenbergstraße 16  
D-32758 Detmold  
Germany  
Fon: +49 5231 14-0  
Fax: +49 5231 14-292083  
www.weidmueller.com

### Single Wave:



### Double Wave:



### Wave soldering profiles

Wired connection elements should be processed in accordance with the DIN EN 61760-1 standard. We have included two recommendations for practical wave soldering profiles, with which Weidmüller PCB terminals and connectors are qualified.

When choosing a suitable profile for your application, the following factors also need to be considered:

- PCB thickness
- Proportion of Cu in the layers
- Single/double-sided assembly
- Product range
- Heating and cooling rates

The single and double wave profiles each indicate the recommended operating range, including the maximum soldering temperature of 260°C. In practice, the maximum soldering temperature is quite often well below the above maximum profile.

We reserve the right to make technical changes.